

# 2024 IMPACT

Report to the  
community



**Jewish Federation**  
of Greater New Haven



**Jewish Foundation**  
OF GREATER NEW HAVEN



**JCC**  
OF GREATER NEW HAVEN

*Dear Friends,  
There is a reason New Haven is such a  
caring and vibrant Jewish community.*

**The reason is YOU.**

Because of you, there are vital services and programs to assist those in need. Our community can provide superb Jewish education to students of all ages, thanks to you. With your support, Jewish Federation of Greater New Haven is safe and welcoming, while our global community is cared for.

It's been this way in Greater New Haven for generations. Since the Federation's founding over 100 years ago, there has been an undeniable sense of pride and connection in Jewish Greater New Haven that propels us forward – and comforts us in times of crisis.

**WHEN TERRORISTS ATTACKED**

On October 7, 2023, Hamas brutally attacked Israel. More than 1,200 innocent people were murdered, including young children. Thousands more were injured, and hundreds taken hostage.

Our community quickly came together to mourn those lost in the attack and pray for the safe return of those kidnapped. And then we did what Jewish Federation of Greater New Haven always does. We got to work.

**JEWISH NEW HAVEN RESPONDS**

We raised our voices to confront the escalating hatred of Jews fueled by antisemitic rhetoric

unleashed by Hamas' attack. We reached out to our extended family in Israel, as well as Israelis now living in Greater New Haven, to reassure them they would not fight this war alone.

We went to Israel to bear witness to the trauma caused by the horrific attacks. We also met with families of the victims and the hostages so that we could keep their stories at the forefront of everything we did and said in the weeks and months that followed.

We worked with university leadership and other partners to ensure our college students felt safe, secure, and supported in the face of emboldened antisemitism on campus.

And we provided immediate assistance to the victims of Hamas and their families by raising more than \$1,637,822 million through the community's Israel Emergency Campaign. Keep in mind, this is in addition to the record-setting \$2.639 million raised by the community for this year's Annual Campaign for Jewish Needs.

On the following pages, you'll find example after example of how you helped our community work together over the past year to care for one another, prepare for the future, share our perspectives, and repair our world.

**Thanks to YOU**

Our world changed on October 7, 2023. It was the single deadliest day in Jewish history since the Holocaust. We were in shock and our community needed to do something, do a lot of somethings. Because of your investment of time and resources this year and in years' past, our Federation was able to be there in that split second when our community needed help the most. From our community gathering on the Monday after October 7, to the ongoing war in Israel, to the explosion in antisemitism, Federation has been the frontline organization responding to the crisis both here and abroad.

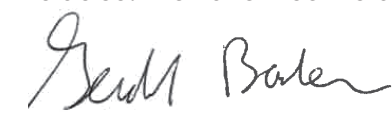
With your help, we raised over \$1.6M for the Israel Emergency Campaign. With those funds, we purchased emergency medical supplies, tents, generators, hand held radios, night vision goggles, security vests and helmets directly, to provide for the 70,000 people living in and around our sister city Afula, on the border of the West Bank. We supported broad relief efforts in Israel for Lifeline Services, Medical Care and Trauma Relief, Economic Relief and Recovery, and Community Resilience and Rebuilding.

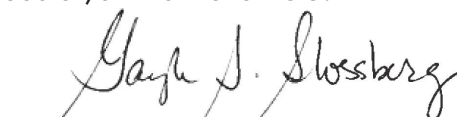
Because of you, we are saving lives and protecting our local community, through our regional security advisor, Mike Shanbrom. We have set up the Jewish Emergency Alert system to keep the community informed in case of a true emergency. Our goal is to ensure that we feel safe and are safe as we gather together and live our lives.

As antisemitism has grown, your support allowed us to be there to fight back against local antisemitic ceasefire resolutions. We were able to organize the community in both Hamden and New Haven to stand up and tell our story. As a result of your participation, neither resolution was taken up! Everyday, Federation has been there to advocate for our community whether it was on a college campus, a private school, places of business or union halls.

While all these front page, urgent matters were being addressed, because of you, we were able to continue to enhance Jewish life and life in the broader greater New Haven community. Under Scott Cohen's leadership, the JCC has seen record a record increase in membership with over 2,156 members, a 10% increase. The building is buzzing everyday with over 1,684 visits daily! Women's Philanthropy continues to be a model for the country, developing meaningful relationships, growing women's leadership programs and delivering record setting generosity. Turn the pages of this report to see that there's so much more!

In partnership with our community agencies, we create a seamless system of support, caring and Jewish pride. Together, we are able to do more than any one agency can do alone. That is the essence of community. Although it was a challenging year, our community answered the call and will continue to do so. We have much to be proud of, all thanks to YOU!

  
Gerry Barker  
President, Jewish Federation  
of Greater New Haven

  
Gayle Slossberg  
Chief Executive Officer



# We stand with our brothers and sisters for Israel



**W**e awoke on Saturday, October 7, 2023, to a living nightmare – the people of Israel were under attack by the terrorist organization Hamas at an unprecedented size and scale. This was no ordinary act of terrorist aggression – this was war. Within days, our community launched an emergency campaign to help provide immediate relief for the victims and their families. Our international partners, American Jewish Joint Distribution Committee (JDC) and the Jewish Agency for Israel (JAFI), were able to bring medical, trauma, and economic relief and recovery to all those in need thanks to the support of the Jewish Federation of Greater New Haven.

At the same time, we held a special community gathering at which more than 500 people – including elected officials and clergy – came together to send our love and support to the people of Israel and to reassure them that they were not alone in this fight.

In the weeks that followed, our community also worked to help keep the stories alive of those kidnapped by Hamas. For example, on November 1, the Jewish Federation of Greater New Haven organized an exhibit downtown across from Yale’s Old Campus of the over 230 hostages then being held captive.

Dozens of people gathered in York Square as photos and names of the hostages were displayed alongside children’s school sets. Speakers told stories of some of those being held in Gaza by Hamas, as we prayed for the immediate and safe return of our stolen extended family members. Attendees were invited to take home posters of those kidnapped and other signs they could use after the vigil to help keep the names and the faces of the hostages visible.

On November 14, the Jewish Federation of Greater New Haven organized two buses participated in the national “March for Israel” in Washington DC. More than 170 community

members joined the record-setting 290,000 attendees to let the world know it was time to bring the hostages home – now.

For generations, the Jewish community in Greater New Haven has held dear the concept that as Jews “Kol yisrael arevim zeh lazeh – all of Israel are responsible for each other.” Whenever there are Jews in need, our community responds.



On November 1, 2023, the Jewish Community Relations Council collaborated with Yale Friends of Israel to host a public space “Hostage Table” demonstration in York Square to raise awareness for the hostages held by Hamas.

**HOW MUCH WE RAISED**  
..... \$1,637,822 million

- WHAT WE ACHIEVED**
- October 9 Community Gathering ..... **500+ attendees**
  - New Haven’s March on Washington..... **170 participants**
  - Emergency Supplies to Afula-Gilboa..... **vests, generators**  
(see photos below of vests with our Federation name on them)



- Yom Ha’atzmaut Community Celebration..... **100+ attendees**
- An Evening with Dr. Yuval Bitton at Temple Beth Tikvah..... **75 attendees**
- An Evening with Moran Stela Yanai at Hebrew Congregation of Woodmont-Chabad of Milford..... **over 100 attendees**

## ISRAEL EMERGENCY CAMPAIGN

Since October 7, Jewish Federations of North America have collectively **allocated \$510 million** through core partners and 520 local NGOs to meet the needs of Israelis, including basic necessities, medical and trauma support, and long-term recovery efforts. This includes funds to:

- Lifeline Services
- Medical Care and Trauma Relief
- Economic Relief and Recovery
- Community Resilience and Rebuilding



# We stand against antisemitism



Combating the hatred confronting the Jewish people has long been a top priority of the Jewish Federation of Greater New Haven. Whether it's organizing opposition to antisemitic ceasefire resolutions at the local level, assisting college students in standing up to antisemitism on campus, or providing security training and consultations, the Jewish Federation of Greater New Haven has been a driving force in the fight against antisemitism.

Nationwide, antisemitism has surged, with 2023 seeing a staggering rise in incidents. According to the ADL, antisemitic attitudes in the U.S. reached alarming levels, while Connecticut itself saw a 170% increase in antisemitic incidents last year. These trends underscore the urgency of our work at the local level, as we take proactive steps to ensure the safety and security of our community.

One of the most significant efforts we've undertaken was rallying our community to oppose antisemitic ceasefire resolutions in

Hamden and New Haven. Through letter-writing campaigns, testimony at public hearings, and support for a Hamden interfaith discussion group led by Pastor Jack Davidson of Spring Glen Church, Hamden, and Rabbi Benjamin Scolnic from Temple Beth Shalom, Hamden, we mobilized our community and engaged with local leaders to ensure these resolutions did not go unchallenged. Our advocacy demonstrated the Jewish Federation's commitment to standing up against antisemitism in local government, fostering dialogue, and promoting understanding across communities.

On college campuses, our Jewish Federation has played a pivotal role in supporting students at institutions like Yale, Southern Connecticut State University, Quinnipiac University, University of New Haven, and local private schools in their efforts to combat antisemitism. Through partnerships with Hillel and other organizations, we've provided resources and support to help amidst growing hostility on

campus. When one college offered a series of antisemitism lectures and speakers while denying Judaic Studies from presenting more balanced speakers, the Jewish Federation of Greater New Haven joined with faculty, staff, and community members to call out the discrimination. As a result of that advocacy, that college has adapted a more collaborative, inclusive approach that is a step in the right direction.

At a private school, a speaker series was planned featuring professors who celebrated the massacre of October 7. The community reached out and the Jewish Federation got to work meeting with the school administrator, explaining the problem and proposing solutions. Thankfully, the administration decided to offer a different alternative.

Whenever antisemitism has reared its ugly head, the Jewish Federation has been there—on the frontline calling out hate and proposing alternate paths forward—whether on campuses, schools, businesses or government.

**“Since October 7, my students as well as millions of students throughout the world – have lived in a shaky state. They are so scared; many do not have the words to articulate their fear. Many have been raised in homes that have not provided a strong or solid enough Jewish foundation enabling them to find comfort in their Judaism... The sad truth is there is little one can do to take away antisemitism’s throbbing ache, but to not be alone makes a big difference in one’s ‘functionability’.”**

Rabbi Reena Judd, The Peter C. Herold House for Jewish Life, Quinnipiac University

# We keep our community safe and secure



“ We are so appreciative that you are just an email or a phone call away. It makes a difference that we can consult you when there is any security question or advice that we need assistance with and we are grateful that you are always readily available. Thank you for making us stronger! ”

Jennifer Bayer, The Towers at Tower Lane

“ I cannot tell you how much your support means to me and our community, Mike. It is comforting to know that you are there for us. ”

Phyllis Gordon, Beth Israel Synagogue Wallingford

**T**his year, more than ever, ensuring the safety and security of our Jewish community has never been more critical. At Congregation Mishkan Israel, this reality hit home in the most alarming of ways last year, underscoring the vital role that Jewish Federation and our partnership with the Secure Communities Network (SCN) play in protecting our community.

In October, the synagogue received three consecutive bomb threats, each one more terrifying than the last. Congregants were understandably shaken, and the situation could have escalated into panic if not for the calm, expert guidance of the Jewish Federation’s regional security professional, Mike Shanbrom, on-site liaising directly with the police, providing critical advice, and offering comfort to those in distress. His presence and the resources provided by SCN helped to manage the situation swiftly and

effectively, ensuring the safety of everyone involved.

The threats didn’t end there. Just a few months later, in January, a suspicious individual attempted to gain unauthorized access to the synagogue, and then again in April yet another threat was made during a Bat Mitzvah celebration. In both of these instances, Shanbrom and the SCN team again leapt into action, ready to respond. They worked closely with local law enforcement, ensuring that the synagogue remained secure and that the community felt supported and protected. The ability to respond quickly and efficiently to such threats is a direct result of the comprehensive security measures and resources that our partnership with SCN makes possible.

Beyond these incidents, our security efforts extend community-wide. Shanbrom, in collaboration with SCN and Emek Security,

provides essential security training, consultations, and on-premise event security. Our security initiative focuses on four key pillars: increasing community awareness of threats, hardening facilities, training members in security protocols, and maintaining strong partnerships with law enforcement to enhance cooperation and intelligence sharing.

*“With everything going on in the world and the dramatic increase in antisemitic acts, I wanted to let you know how much we appreciate all that Secure Community Network and the Jewish Federation do for the Jewish community. At Congregation Mishkan Israel, we rely on your expertise, advice, and guidance, and you have always been there for us.”*

Steven Jacober, Executive Director Congregation Mishkan Israel

## HOW OUR COMMUNITY HAS BEEN PROTECTED

- 21 Site assessments conducted
- 176 Site security walkthroughs
- Provided security for **84 events** throughout the community
- 175 Trainings attended by over **5,700 participants**
- 614 Security consultations provided
- 381 Incident reports received and processed





# We enrich our growing community

**A**t the JCC, every day brings its own rhythm, filled with opportunities for connection, wellness, and learning. Whether it's a busy Tuesday or any other day of the week, the JCC is the heart of our community—where individuals of all ages come together to thrive, grow, and find support.

On a typical Tuesday, the energy starts early, as young families drop off their children at the Beverly Levy Early Learning Center and/or JCC Day Camps, depending on the season. With 12 Beverly Levy classrooms filled by 118 students and over 375 campers, there's no shortage of excitement as parents gather at Café J to chat over coffee and pastries. Launched last year, Café J has expanded as well to include 30 interns from Chapel Haven Schleifer Center, all of whom gain real-world experience alongside 41 volunteer mentors, making this space a true reflection of our values of inclusivity and opportunity.

Throughout the day, our Marcia & Stanley F. Reiter Swimming Pool is constantly in use. Early risers join water aerobics, followed by swim lessons, water walking, and open swim, before the Blue Marlins Swim Team makes waves in the evening. Down the hall, the gym bustles with activity, from pickleball classes to Tiny Tots Tennis, and in the evening, our basketball leagues take the courts by storm. Meanwhile, the fitness center buzzes with members working out individually or joining our small group classes.

The JCC's commitment to health and wellness shines through, whether it's through our fitness programs or the growing success of Spa at the J. With new Biomat and Med-Spa services, in addition to massage therapy and skincare, Spa at the J offers something for everyone, making self-care an accessible part of daily life here.

The sound of lively conversations fills the halls as lifelong learners attend inspiring

educational programs, and games of Canasta and Mah Jongg unfold in every corner. In the afternoon, the energy shifts as children arrive for our popular dance classes and Extended Day program, their laughter filling the building. And as the sun sets, the Vine Auditorium lights up with Israeli Dance, closing another day at the JCC on a high note.

This is just one snapshot of life at the JCC, where every day is full of new possibilities, new connections, and new ways to engage with our vibrant community. There's always room for more—whether you're looking to dive into our programs for the first time or deepen your connection to the JCC.



Debbie Margolis, former Chapel Haven Intern who has since become a staff member at the JCC.

## HIGHLIGHTS FROM 2024

- Jewish Community Extravaganza **30 community partners** pre-Purim
- PJ Parent Connectors: PJ Library of Greater New Haven was awarded a generous grant from PJ Library and the Harold Grinspoon Foundation allowing our PJ Library **to hire three Parent Connectors** for the year; Amanda Robinson (West Haven/Milford), Phoenix Matosian (Seymour/Shelton/Oxford) and Shari Rahamim (Hamden/surrounding area).
- **JEWEL Society Launch:** Launched in Nov. 2023 to encourage support for the activities of PJ Library and engage a new generation of future leaders. "JEWEL" (Jewish Women Emerging Leaders) was selected by the founders to embody the philanthropic endeavor of our valued members who are taking personal responsibility for the continuity of Jewish identity in our community. As of August 2024, Jewel Society **has grown to 29 members.**
- Total number of Interns trained at Café J ..... **30**
- Total number of Café J volunteers ..... **41**
- Number of Chapel Haven students/interns now employed by the JCC ..... **5**
- Number of Chapel Haven students/interns now employed elsewhere ..... **7**
- Beverly Levy Early Learning Center children enrolled ..... **118**
- JCC Day Camps children ..... **379**
- Number of JCC campers receiving scholarships ..... **10%**
- Members..... **2,156 members**
- Increase in membership ..... **10%**
- Visits to building/year .... **500,000**
- Children taught to swim at the JCC this year ..... **750**

# Assisting others with our Community Impact Grants



Colors of my Jewish Year, Beth Israel Synagogue, Wallingford



The Jewish Women's Conference at Yale

“With appreciation of the community impact grant, Temple Beth Sholom, Congregation Mishkan Israel, and the Jewish Historical Society, were able to partner to bring together a diverse community to study and learn more about how Jewish history is informing us where we are going in the next decade.”

Larry Schaefer, Meet the Moment Co-chair

“The ‘Beauty and Bliss of a Proper Burial’ grant was an opportunity for a heartfelt reflection on mourning, the value of community, and Jewish customs. I was moved to tears and felt very embraced in support by all.”

Betsy Schulman, Beauty and Bliss of a Proper Burial Co-chair

The Jewish Federation is proud to expand its reach to include all aspects of our Jewish community. The goal is to build sustainable programs to educate, engage, and expand our Jewish community. The grants support programs to develop new initiatives that include collaboration, long-term impact, and positive change in our Jewish community.

## THE 2024 COMMUNITY IMPACT GRANTS MADE A DIFFERENCE THROUGH THE FOLLOWING PROGRAMS:

■ **COLORS OF MY JEWISH YEAR** Sponsored by Beth Israel Synagogue in Wallingford, with local area libraries, offered creative, interactive educational programs for unaffiliated and interfaith Jewish children ages 3-8 participated.

■ **COMMUNITY INCLUSION DIRECTOR** Rachel Scolnic Dobin, MSW, has been hired as the inclusion director at the JCC to provide

social, educational, recreational and vocational opportunities for teens and adults with disabilities.

■ **COMMUNITY MEAL DELIVERY: HARNESSING VOLUNTEERS FOR COMMUNITY CONNECTION** The Towers initiated a kosher Shabbat meal delivery program to provide vulnerable older adult meals to be more socially connected.

■ **MEET THE MOMENT** A collaborative adult educational program sponsored by Congregation Mishkan Israel, Temple Beth Sholom, the Jewish Community Relations Council, and the Jewish Historical Society, for a four-part educational series of relevant Jewish topics.

■ **GOSPEL SHABBAT AT CONGREGATION B'NAI JACOB** In an effort to create a diverse unified community, Congregation B'nai Jacob, First Church of Christ, and the Jewish Equity, Diversity & Inclusion (JEDI) Taskforce of the Jewish Federation of Greater New

Haven hosted a community event to acknowledge the social justice inspired by Dr. Martin Luther King.

■ **THE JEWISH WOMEN'S CONFERENCE AT YALE** (Pictured above) Participants celebrated the 25th anniversary of Jewish women's contributions to communal and religious life. The conference inspired published writing, archival video, and other documentation to inform contemporary conversation about Jewish women as community leaders.

■ **JEWISH CULINARY ACADEMY WITH CHEF DANNY CORSUN** The Towers, Women's Philanthropy of the Jewish Federation of Greater New Haven, and PJ Library partnered to provide hands-on Jewish education by bringing generations together. Chef Danny Corsun, from Los Angeles, created a fun-filled cooking program in the new kitchen at The Towers at Tower Lane.

■ **THE BEAUTY AND BLISS OF A PROPER BURIAL** The Jewish Cemetery Association, Robert Shure Funeral Home, and the Women's Philanthropy of the Jewish Federation of Greater New Haven hosted an event about the significance and appreciation of a proper Jewish burial. The program featured Sarah Birnbach, award winning author of “A Daughter's Kaddish.”



Jewish Culinary Academy with Chef Danny Corsun, The Towers at Tower Lane



# We foster strong partnerships

## OTHER AGENCIES WE SERVE

Along with the agencies listed to the left, these organizations benefit from security services provided through our Regional CT Security Initiative in partnership with the Secure Community Network

- B'nai Jacob Cemetery
- Beth El-Kesser Israel Cemetery
- Beth Israel Hebrew Cemetery
- Beth Israel Synagogue
- Beth Tikvah Cemetery
- Beverly Levy Early Learning Center
- Bikur Cholim Sheveth Achim
- Chabad at Yale
- Chabad of Bethany
- Chabad of Downtown New Haven
- Chabad of Hamden
- Chabad of Orange/Woodbridge
- Chabad of Shelton-Monroe
- Chabad of the Shoreline
- Chabad of Wallingford
- Chabad of Westville
- Colel Tiferes Zekainim
- Congregation B'nai Jacob
- Congregation Beth Shalom Rodfe Zedek
- Congregation Beth-El Kesser Israel (BEKI)
- Congregation Chabad Lubavitch
- Congregation Kol Ami Cemetery
- Congregation Mishkan Israel
- Congregation Or Shalom
- CTeen
- Ezra Academy Montessori Preschool
- Fountain Hill Cemetery
- Gan Israel Camp of New Haven
- Hebrew Congregation of Woodmont - Chabad of Milford
- Jewish Israeli Center of New Haven
- Mishkan Israel Cemetery Chapel
- Mishkan Israel Nursery School
- New Haven Kollel
- Or Shalom Cemetery
- Orchard Street Shul (Congregation Beth Israel)
- Rabbinical Institute of New Haven
- Robert E. Shure Funeral Home
- Shabtai
- Temple Beth David
- Temple Beth Shalom
- Temple Beth Shalom Cemetery
- Temple Beth Tikvah
- Temple Beth Tikvah Nursery School
- Temple Bnai Abraham Inc. Cemetery
- Temple Emanuel
- Temple Emanuel Cemetery
- University of New Haven Hillel
- Walnut Grove Cemetery
- Weller Funeral Home
- Westville Synagogue Cemetery
- Westville Synagogue
- Yeshiva Gedolah Rabbinical Institute

## TIER ONE AGENCIES

- Camp Laurelwood
- Ezra Academy
- Jewish Family Service
- Southern CT Hebrew Academy
- The Towers at Tower Lane

## DAY SCHOOLS

- Bi-Cultural Hebrew Academy (Jewish High School of CT)
- New England Jewish Academy (Hebrew High School of New England)
- Yeshivas Beis Dovid Shlomo

## OTHER AGENCIES/PROGRAMS

- BBYO
- Eruv Society
- Hebrew Burial & Free Loan Association, NH
- JCC Day Camps
- Jewish Cemetery Association
- Jewish Historical Society

- New Haven Mikvah Society
- Quinnipiac Hillel
- Slifka Center at Yale
- Southern CT State University Hillel
- UConn Hillel

## INITIATIVES

- Holocaust Grounds Care
- Synagogue Initiative

## STATE AND NATIONAL PROGRAMS

- JCPA
- JFACT

## OVERSEE & OTHER COMMUNITY SUPPORT AGENCIES

- Birthright Israel
- Ethiopian Aliyah
- JAFI/SNEC/AFULA/(No Emissaries)
- JFNA Fair Share Dues
- Overseas JFNA
- Southern New England Consortium

## JFNA PARTNER AGENCIES



American Joint Distribution Committee (JDC)



Jewish Agency for Israel



# How you support the community through endowment

## PACE & LOJE FUNDS

How can you provide for Jewish education, camps, schools, the frail elderly, those in need, the JCC, and for Jews in need abroad and in Israel? With your annual gift to the Jewish Federation of Greater New Haven.

How can you ensure your legacy will last for future generations of Jews in Greater New Haven and throughout the world? By establishing a PACE or LOJE fund for the benefit of the Jewish Federation's Annual Campaign. These funds are invested and managed by the Jewish Foundation of Greater New Haven on behalf of Jewish Federation donors, ensuring long-term support for the Federation's mission.

A Perpetual Annual Campaign Endowment (PACE) is a permanent fund endowing your Annual Campaign gift. Through their Lion of Judah Endowment (LOJE), women strengthen the Jewish community by providing funds to meet needs at home, in Israel, and around the world.

Your PACE or LOJE fund continues your legacy to our community. Your fund will continue from your generation to the next by distributing funds to our local Federation Annual Campaign that provides for our community – in

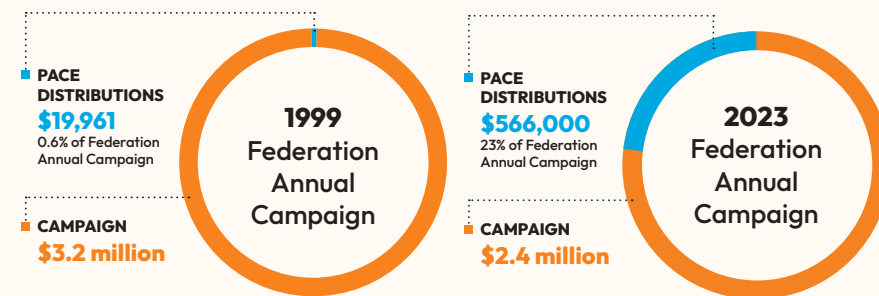
Greater New Haven, Israel, and worldwide. PACE funds make an impact – this year, \$566,000 will be distributed to the Annual Campaign from PACE/LOJE funds.

Your Jewish legacy can be created during your lifetime with cash, stock, or retirement assets. You can also make a current commitment to establish or add to your fund through your estate, life insurance, or retirement assets.

In 2008, there was \$1.2 million in PACE and LOJE funds. Today, there is over \$17 million, and in addition, there is another \$2 million in commitments to PACE and LOJE!

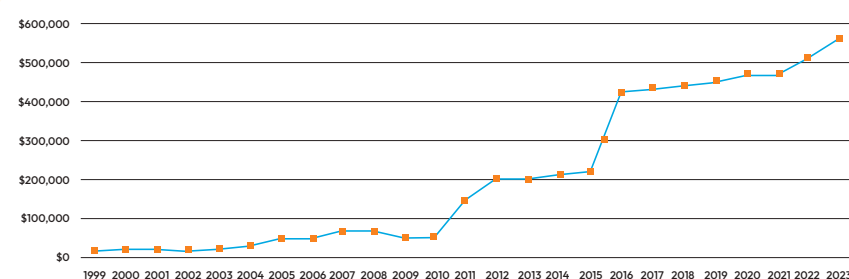
### PACE/LOJE DISTRIBUTIONS TO THE JEWISH FEDERATION ANNUAL CAMPAIGN

PACE funds have grown significantly over the years. In 1999, they were just 0.6% of Federation Annual Campaign donations. In 2023, they account for over 23%.



How important are the annual distributions from the PACE/LOJE funds to the Federation's Annual Campaign? Let's take a look:

### PACE/LOJE DISTRIBUTIONS TO THE JEWISH FEDERATION ANNUAL CAMPAIGN 1999-2023



## PROGRAMS & OFFERINGS GRANTS

Community Security  
Women of Vision Society  
Jewish Overnight Camp  
Jewish Elderly  
Professional Development for Educators

## SCHOLARSHIPS

College  
Jewish Overnight Camp  
Synagogue School  
Israel Experience Programs

## CHARITABLE GIVING

Designated/Restricted Funds  
PACE & LOJE Funds for Jewish Federation  
Donor-Advised Funds/Family Philanthropy  
Unrestricted Funds  
Fund Management

## TAX-SMART GIVING

Gifts of Stock  
Gifts from Your Estate  
Charitable IRA Rollover  
Planned Gifts

## COMMUNITY IMPACT

Community Wish List  
Philanthropic Advising  
Youth Philanthropy  
Grants/Scholarships

## CREATE A JEWISH LEGACY

A collaborative effort involving area agencies and synagogues  
Aims to secure the future of the New Haven Jewish community



Jewish Elderly Grant Recipient: The Towers at Tower Lane.



Marley Bloom Built a Tzedakah, she's pictured with parents Michael and Allison Bloom.

Read the Foundation's annual report [HERE](https://newhavenjewishfoundation.org/annual-reports):