



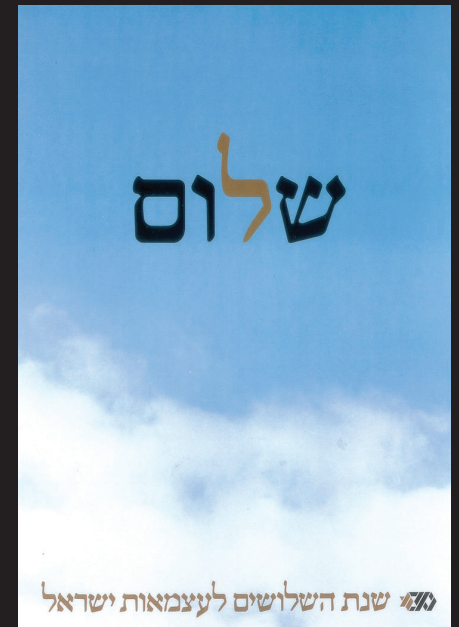
1949



1958



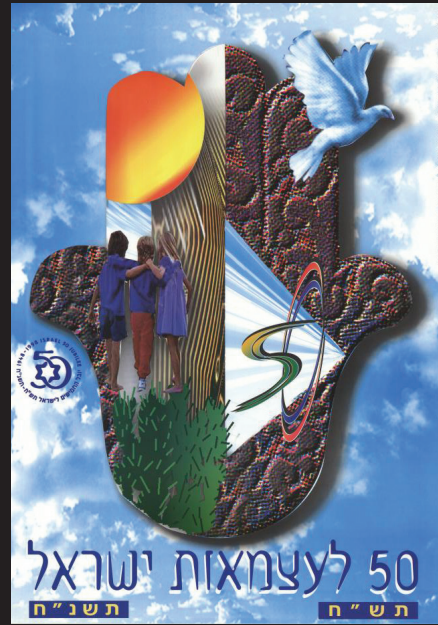
1968



1978



1988



1998



2008



PAGE 17

TODAY!



WORTH MENSCHENING

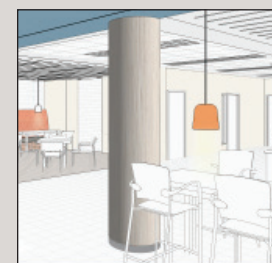
For almost 20 years, Sandy Hagan has helped many feel more food secure at the JFS Food Pantry.

PAGE 4



NEW CANTOR COMES TO B'NAI JACOB

Congregation B'nai Jacob welcomes Cantor Malachi Kanfer. PAGE 6



GET READY FOR JCC GRAND OPENING

Doors set to open at the Jewish community building in December. PAGE 3

Missions Can Feed the Soul

In 2003, I was leading a full and productive life in Allentown, Pennsylvania. I was busy with my made-to-order desserts business, Sweetiepies, which I operated out of my home. I was volunteering heavily at my synagogue and serving on the Women's Division and Jewish Federation boards while managing to squeeze in some PTO stuff, coaching my daughter's softball team and playing tennis. Life was good and I thought it was pretty much how it should be.

Out of the blue, the Jewish Federation director called me and let me know of the community mission departing for Israel just days from then. He told me that I had been specially selected to join the mission—paid for by a generous anonymous donor. I needed to make a split-second decision to leave my family, and I didn't even have a current passport! How could I refuse such a golden opportunity?

I dropped everything. Made special arrangements. Ran to Philadelphia to expedite a same-day passport, and in a few days, I was off to the land of milk and honey where I hadn't been since I was 16.

Little did I know that that trip would be transformational. Not only did I get to experience the power and impact of

the Federation system up close in all its life-changing and life-saving capacity, but I firmly believe that the trip set me back on the path toward serving as a Jewish communal professional and is part of the reason why I am serving the Greater New Haven community today.



Judy Alperin in Israel in 2003.

Missions are remarkable ways to connect with the Jewish people.

Our community is currently planning its next mission to Poland and Israel departing on Oct. 15, 2018. Jewish Federation president, Dr. Norman Ravski, an expert on the Shoah and the death camps having led numerous March of the Living trips, will be integral in the planning and leadership of the trip. After several days experiencing Poland, our group will journey on to Israel where we will experience the sights, sounds, smells and tastes of today's Israel in all her splendor, after her first 70 years. The trip will culminate

just as the Jewish Federations of North America General Assembly gets underway, and we encourage all participants to add on several extra days to experience a conference like no other.

Since that fateful mission in 2003, I have had the good fortune to return to Israel many more times. In fact, I find that if I'm not there every 18-24 months, I suffer a bit of withdrawal. I don't know if it's the incredible Israeli breakfasts that I crave, walking on the actual stones that our forebearers walked upon or interacting with Israelis, but I know that each time I go, I feed my soul. I am looking forward to experiencing Israel with you, and I strongly encourage you to make the time for a very special experience.

Join the Greater New Haven Jewish community as we journey to the past and catapult into the future.

Poland & Israel
October 15 - 21, 2018

Stay with us for an even more interesting celebration of Israel @ 70 at the Jewish Federations of North America's General Assembly: October 22 - 24, 2018.



SHALOM NEW HAVEN

SHALOM New Haven is published six times per year and delivered free of charge to the Greater New Haven Jewish community by the Jewish Federation of Greater New Haven.

COPY DEADLINES
Copy deadlines for the upcoming Shalom New Haven issues are:
 • November 28 for January/February issue
 • January 26 for March/April issue
 • March 30 for May/June issue
 • May 25 for July/August issue
 • July 27 for September/October issue
 • Sept. 28 for November/December issue

SUBMISSIONS
To submit an article or photo, please email shalomnh@jewishnewhaven.org. Please include your contact information when submitting.

Space is limited; submission does not guarantee publication. All articles are subject to approval by the editorial board.

SHALOM NEW HAVEN STAFF
Nurit Kohl
Director of Marketing & Communications

Jeannette Brodeur
Editor

Wendy Bowes
Senior Graphic Designer

George Hauer
Advertising Sales Manager

EDITORIAL BOARD
Chesky Holtzberg: Chair
Chava Light
Mark Oppenheimer
Cindy Papish Gerber

LEADERSHIP
Dr. Norman Ravski
President

Judith Alperin
Chief Executive Officer

Scott Cohen
JCC Executive Director

Lisa Stanger, Esq.
Foundation Executive Director

Jewish Federation of Greater New Haven
360 Amity Road, Woodbridge, CT 06525
(203) 387-2424
jfgnh@jewishnewhaven.org
jewishnewhaven.org/SNH



It's Never Too Late to Have a B'Mitzvah

The Towers Hosts Special Adult Service on Dec. 17

By Cindy Mindell
Special to SNH

NEW HAVEN - Herbert Mermelstein still remembers his first bar mitzvah ceremony, nearly 70 years ago: how he led the entire Saturday morning service with Rabbi Stanford of Ahavas Zedek in Akron, Ohio, and was the center of attention at a fancy reception befitting the youngest of five children and the only son.

His Maftir book and bar mitzvah speech from that May Shabbat in 1938 are among the precious possessions that have accompanied him through a lifetime spent in Akron, then Florida, and most recently, Connecticut. On Saturday, Dec. 17, Merm-



Herbert Mermelstein prepares to say the Barekhu before reading from the Torah in preparation for his bar mitzvah.

elstein will dust off his Torah-blessing skills when he joins 14 fellow residents of Tower One/Tower East at a special adult B'nai Mitzvah Service from 10 a.m. to noon at 18 Towers Lane in New Haven. The event is open to the community.

Mermelstein moved to New Haven in August 2015, nine months after burying his wife, Miriam, and three months after celebrating his 90th birthday. Miriam's death made him a regular at Friday night and Saturday morning services, where he eventually learned the Torah blessings by heart. He attended a monthly class at The Towers taught by Rabbi Benjamin Scolnic of Temple Beth Sholom in Hamden.

Why would people in their later years want to participate in a coming-of-age ceremony traditionally reserved for 12- and 13-year-olds? "Life circumstances sometimes prevented our residents from achieving this rite of passage," said Interim CEO Jackie Curl. "For those who were not able to participate when they turned 13, this is a second chance. For others who once celebrated their b'nai mitzvah, this is an opportunity to reaffirm their desire to stand up and be counted."

"One man told me, 'I've never felt fully Jewish; I've always felt like a second-class citizen because I know stuff, but I never had a bar mitzvah ceremony,'" Scolnic said. "He actually knows the brachot - it's not a matter of not knowing - but he never felt like he could have an aliyah, which is not technically true. Of course he could have had an aliyah, but he never felt like he should because he hadn't had a bar mitzvah ceremony. That in itself is enough for me to find meaning in this event."

RSVP requested. Contact Melly at (203) 772-1816, x280, jermel@towerone.org.



GRAND OPENING

January, 2018
Doors open December, 2017

ENJOY THESE NEW & ENHANCED FEATURES:

- Brand new fitness center
- Brand new locker rooms
- New Yeladim Early Learning Center classrooms
- STEAM center (Science Technology Engineering Arts & Math) and a maker space for all ages
- Versatile indoor sports area for multiple sports with a climbing wall
- Professional workspace for members
- Expanded, new and inviting café
- Enhanced security features

Jewish Federation
OF GREATER NEW HAVEN



360 AMITY ROAD, WOODBRIDGE, CT | (203) 387-2424
jewishnewhaven.org | jccnh.org

SAVE THE DATE:

Join us as we travel from Poland to Israel

Details to come. Questions? Contact Jeanette Yurman | jurmam@jewishnewhaven.org



Jewish Federation
OF GREATER NEW HAVEN

October 15-22, 2018

3 OPTIONS: Either depart for home, extend your visit, or continue on with the General Assembly: Oct. 22-24 2018



ROBERT E. SHURE, INC. FUNERAL HOME

Dedicated to the Dignity and Respect of Tradition



Robert E. Shure Funeral Home is the only strictly Jewish Funeral Home facility in the Greater New Haven area.

We are an independently-owned Jewish funeral home where honoring our families, our traditions, and our rich heritage is at the center of all we do. Since 1939, we have based our philosophy and services around these beliefs. That is why Jewish families throughout Connecticut and beyond have trusted the Robert E. Shure Funeral Home for more than 78 years to be there and to care for their families and loved ones, provide dignified funeral services, and treat them as part of our own family.

(203) 562-8244 • 543 GEORGE STREET, NEW HAVEN, CT
SHUREFUNERALHOME.COM

Shir Magic Event Pays Tribute to Rabbi Brieger

On Saturday, Nov. 11, at 7:30 p.m., Temple Emanuel will host the second annual musical celebration 'Shir Magic,' to honor the memory of their late Rabbi Emeritus, Jerry Brieger. The celebration features Jewish musician Alan Goodis and will conclude with a reception presented by Temple Emanuel's famous bakers.

Goodis will also be Temple Emanuel's musician-in-residence for the weekend. He will lead Friday night and Shabbat morning services with Rabbi Michael Farbman, and on Sunday morning, he will teach Sunday school students music, songs and inspiration, and together, they will perform a short concert for the school and parents.

'Shir Magic' pays tribute to Rabbi Brieger's Hebrew name, "Shir," which means song and 'Magic' for the magic tricks he loved to do for children. Known for playing his guitar from the pulpit, Rabbi Brieger served Temple Emanuel from 1977 until 2008, when he had to step down for medical reasons. He was also a faculty member at Makom Hebrew High School. Rabbi Brieger served as both the chairperson and a member of the Greater New Haven Board of Rabbis, and as the president and a board member of Jewish Family Service of New Haven.

When Rabbi Brieger died last August at the age of 71, the congregation could think of no better way to honor

his memory than through music, said Rabbi Michael Farbman, Temple Emanuel's current rabbi. Farbman said the synagogue plans to make the concert an annual event. Legendary group Kol B'Seder performed at the inaugural program last year.

Goodis, this year's featured entertainer, has performed at temples, youth conventions and Jewish summer camps throughout the United States. Goodis served as musical director for the North American Federation of Temple Youth International Convention and on faculty for Hava Nashira. In 2011, he developed Nashir: an NFTY Teen Songleading Institute in partnership with the URJ.



Tickets for the event can be purchased online or at the door. They are \$20 for adults, \$10 for children 12 and under, and \$40 for families (maximum of two adults and unlimited children).

For more information, go to teghn.org, or call (203) 397-3000. Temple Emanuel is located at 150 Derby Ave. in Orange.

This Issue's Honorable Menschen Goes to... Sandy Hagan

By Amy Pressman
Special to SNH

Sandy Hagan is Jewish Family Service of Greater New Haven's (JFS's) indispensable Food Pantry and Nutritional Health Center Director as well as Coordinator of Agency Operations for JFS.

In her nearly 20 years at JFS and 15 years as head of the pantry, Sandy has helped countless families and individuals feel more food secure. In addition to the food clients receive, they also walk out of the pantry with smiles, thanks to her.

Under Sandy's direction, the food pantry is operated entirely by volunteers, including Bill Gosselin. What sets JFS's Food Pantry apart is its "personal touch," Gosselin said. "All of the clients get what they need," he said. "The pantry is well-run, friendly and cheerful. Sandy sets the tone and makes everything so kind, thoughtful and generous."

Another volunteer, Betsy Flaherty agreed. "Sandy is really kind, has a big heart and really cares about these people and they feel that," she added.

The JFS Food Pantry isn't a one size fits all model. Clients take a basket or shopping cart to select exactly what they need based on their living situations, dietary concerns and other factors. "Sandy takes the time to learn about each client and has volunteers set aside special food items for them," Flaherty said.

Mrs. O., a food pantry client, agreed. "Sandy is the best person. She tries to help everybody she can."

Not only does Sandy supervise, coordinate and schedule her staff of 11 volunteers, she also orders all of the food and supplies and gathers statistics and performs analyses for the state. She also helps clients take advantage of JFS's many social services programs. Within the JFS offices, as Coordinator of



Agency Operations, Sandy oversees agency policies, procedures and IT services.

"Sandy is an incredibly effective and compassionate leader of our food pantry and all of our food assistance efforts," said Jonathan Garfinkle, JFS's Executive Director and CEO.

"She has established an environment of inclusivity and respect in which clients are treated with dignity, courtesy, honor, and humor," Garfinkle said. "Sandy makes the experience of acquiring food akin to shopping in a market, but with a unique and special human touch. The Food Pantry and Nutritional Health Center has become a community - more than just a place to pick up food."

As much as she enjoys seeing her clients, her favorite thing to hear a client say is "I've got a job now or my situation has changed and I'm okay now. This is my last appointment." Sandy also loves her incredible group of volunteers. "The pantry would not exist without them."

Each month, the food pantry has "Rabbinic Wednesdays" with Rabbi Hesch Sommer, Rabbi Steve Steinberg, and a rotating corps of guest rabbis assisting clients.

Mara Ginsberg, JFS's Volunteer Coordinator, provides additional support with volunteers from the Woodbridge branch of the Kennedy Center, the Foundation School in Milford and CCCD Milford - Wheelers Farm.

Food pantry clients schedule a visit to shop for groceries at the Food Pantry once a month. In addition to these scheduled clients, the food pantry also takes in a great number of emergency calls for food. Currently, more than 250 families utilize

the JFS Food Pantry on a regular basis. For more information on ways you can help or to donate food, contact Sandy at (203) 389-5599, x121.

The food pantry is funded in part by grants from the United Way of Greater New Haven, the Community Foundation for Greater New Haven, the Jewish Federation of Greater New Haven, CHEFA, the 'B' Foundation, and the NewAlliance Foundation. It also receives private donations.

Do you know someone who should receive an Honorable Menschen? Call (203) 387-2424, x304 or email jbrodeur@jewishnewhaven.org to cast your vote.

FOOD4KIDS New Haven Event Honors Sen. Kennedy

The FOOD4KIDS New Haven Celebration will be held on Thursday, Nov. 9, at 6:30 p.m. at LoRicco Tower, 26 Crown St. in New Haven.



of the free meal programs provided by the public schools. Jewish Family Service of Greater New Haven and Women's Philanthropy of the Jewish Federation of Greater New Haven have

the weekends. Better test scores, improved reading skills, positive behavior, improved health and increased attendance have all been attributed to the success of this program.

A contribution of \$200 feeds one child in the program for the academic year. FOOD4KIDS New Haven is currently providing for more than 280 students.

For more information about the event or for sponsorship opportunities, contact Rachel Scolnic Dobin at rsdobin@jfsnh.org or (203) 389-5599 x 109.



State Senator Ted Kennedy, Jr. will be honored at the event, which raises money for this valuable program that provides supplemental weekend food for food insecure children in the New Haven public school system.

joined other programs throughout the country to do something about this situation in our own backyards.

In Connecticut, nearly one child in five is hungry or food insecure and does not get enough food outside

FOOD4KIDS New Haven is designed to feed school children who are food insecure and have little or no food on

Congregation Or Shalom Hosts Interfaith Thanksgiving Service

Congregation Or Shalom will host the Orange Interfaith Community Thanksgiving Service this year on Sunday, Nov. 19, at 7 p.m. All are welcome to attend.

Clergy from all local churches and synagogues will participate in the service. The service will be followed by refreshments and fellowship. Every year, clergy and congregants from six houses of worship in Orange - Church of the Good Shepherd, Congregation Or Shalom, Holy Infant Church, Orange Congregational Church, Saint Barbara Greek Orthodox Church and Temple Emanuel - come together to celebrate Thanksgiving with a family-friendly service full of music and readings representing the spirit of Thanksgiving that is common to all faiths.

For information, contact Congregation Or Shalom at (203)799-2341.



Our Young Emissaries, Rotem Linchevski and Talya Machpood, recently got to enjoy their first apple-picking experience with young students from Ezra Academy. Don't forget to follow them on Facebook to find out where Rotem and Tayla are headed next. If you are interested in hosting, contact Amalya Brownstein at amalyab@jccnh.org.

Porsche • Volvo • Mercedes • BMW

the Woodbridge AUTO BODY SHOP inc.

- American and Foreign Specialists -

Free Estimate • Frame Machine • Professional Insurance Help
Loaner Car Available • Interstate Car Carrier Service

203.397.2909 36 LUCY STREET, WOODBRIDGE, CONNECTICUT 06525

Foundation Offers Grants for Jewish Educators

Thanks to the Judith A. Kaye Fund for Teachers in Jewish Education and the Community Education Funds, the Jewish Foundation is thrilled to offer professional development grants for Jewish educators. These grants will help ensure that classroom educators in local Jewish schools have the opportunity to attend workshops and conferences in order to develop their teaching skills, and will help local Jewish organizations to provide educational opportunities to instructors and the community.

Applicants must be either:

- classroom educators employed in Jewish education in a local Jewish school or synagogue,
- and/or a local Jewish school or synagogue.

Eligible programs must be hosted by a recognized Jewish institution or reputable educational institution. **Application deadlines are Dec. 1 and April 1.** Go to www.jewishnewhaven.org/scholarships for application and guidelines.

B'nai Jacob Welcomes New Cantor in Special Program

In a special musical program, Congregation B'nai Jacob in Woodbridge is welcoming a new cantor, Malachi Kanfer, on Sunday, Nov. 12, at 3 p.m. The event is free and open to the community.

The program's highlight will be "A Cantor's Concert Extraordinaire," featuring Cantor Kanfer, along with special cantorial guests. The concert will also include participation of local choirs: The Sweet Singers of B'nai Jacob, Our Lady of Assumption Church Choir, First Church of Christ Choir, and New Haven Hazamir Teen Choir. A reception will follow the concert.

Cantor Kanfer, 28, originally from Ohio, studied as an undergraduate at Oberlin College. He was invested as a cantor from the H. L. Miller Cantorial School and College of Jewish Music at the Jewish Theological Seminary in New York City.

In his new role, Kanfer will lead the community in prayer, teach liturgical music, officiate at life cycle events, and serve as a pastor. He



is also the new director of the Religious School at Congregation B'nai Jacob, and choir director at B'nai Jacob and New Haven Hazamir.

For more information and to RSVP, go to bnaijacob.org. The synagogue office can answer questions at (203) 389-2111. Congregation B'nai Jacob is located at 75 Rimmon Road in Woodbridge.



Help Raise Funds for Emergency Disaster Relief

The late summer/early fall weather systems have wreaked devastation, created catastrophic damage and caused trauma in Houston, Florida, Puerto Rico and the U.S. Virgin Islands.

There have been and continue to be overwhelming needs in each of those areas where the scope of damage to individual homes and communal institutions poses serious risk to an entire community's stability and sustainability. There are whole island communities in a desperate battle to meet the most basic needs.

We have Jewish communal and human issues to address. We urged you to help us meet these challeng-

es by raising funds for our emergency relief efforts to help the communities to recover.

Jewish Federations of North America has already committed \$2.2M in unrestricted relief funding, and an additional \$2M in restricted funding.

To date, 173 donors contributed \$29,225 through the Jewish Federation of Greater New Haven to support these efforts. But there is much more to do and it's never too late to help. Just go to jewishnewhaven.org/natural-disaster-relief. One-hundred percent of the funds raised will be used to help those impacted by catastrophic flooding and damage caused by hurricanes in 2017.

IRA Charitable Rollover Creates Giving Opportunity

The IRA Charitable Rollover creates an opportunity for donors age 70 1/2 and older to establish an endowment or make an outright charitable gift to a charitable organization. Your rollover can be directed for a capital campaign gift, current needs or restricted for endowment purposes. Your gift can be earmarked for your synagogue, a local Jewish agency, Jewish education, or any program or organization that is important to you. For example: Mr. Cohn distributes \$18,000 from his IRA to his synagogue and/or to establish an endowment fund for his synagogue. Mr. Cohn names the fund after his grandchildren.

WITHOUT THE IRA CHARITABLE ROLLOVER:

Mr. Cohn would be subject to federal and Connecticut income tax on the amount of the distribution (even if it went straight to charity) – although he could claim a charitable income tax deduction on his federal return for the donation, he would not be able to do that on a Connecticut income tax return and would have Connecticut income tax liability for the distribution—even if it was given directly to charity.

WITH THE IRA CHARITABLE ROLLOVER:

The \$18,000 distribution is not taxable income for federal and Connecticut income tax purposes (even if it is being used toward his required minimum distribution)—it is tax neutral. Mr. Cohn has created a wonderful Jewish legacy for his family and community, reduced his state income tax liability, and reduced his taxable estate!



WHAT IS THE ADVANTAGE?

If you already have enough income and your IRA minimum distribution requirement only increases your tax liability, this allows you to donate your distribution directly to charity without realizing federal or Connecticut income tax liability on the amount of the distribution (you will not have to pay Connecticut or Federal income tax on that amount).

In addition, if you have a taxable estate, your IRA, will be subject to income and estate taxes (once both spouses are deceased and the IRA is left to your children, grandchildren or other individuals). In fact, in a taxable estate, your non-spouse beneficiaries could end up with 25 cents on the dollar for your IRA assets! The rollover allows you to remove some of those tax-plagued assets from your estate while also providing you with the opportunity to make a significant charitable gift.

In addition, if you have a secondary smaller IRA, which is not a necessary income source, this is an opportunity to donate that IRA to our community and make a significant and much needed impact.

TEN THINGS TO KNOW ABOUT THE IRA CHARITABLE ROLLOVER:

1) The distribution from your IRA must be made directly to the charitable organization.

2) You must be 70 1/2 or older at the time that the distribution is made (note, this differs from the required minimum distribution where you only need to turn 70 1/2 during the year).

3) The IRA Charitable Rollover is permanent; you can do it this year and every year.

4) The maximum amount that can qualify is \$100,000.

5) The IRA Charitable Rollover will satisfy your required minimum distribution.

6) You can roll over more than your required minimum distribution and in addition to your required minimum distribution (up to \$100,000 to charity).

7) The amount of the IRA Charitable Rollover does not need to be reported as income on your federal or Connecticut income tax return.

8) Only distributions from traditional and Roth IRAs qualify.

9) To qualify, the distribution can only be for charitable purposes and cannot be designated for a donor advised fund, supporting organization, private foundation or life-income gift (charitable trust or annuity).

10) No goods or services can be received in exchange for the distribution (i.e. tickets or dinner).

In most cases, you will need to contact your IRA plan administrator/financial institution. Please consult your professional advisor concerning your tax plans.

SAVE THE DATE

SUNDAY, MARCH 18, 2018

SECOND ANNUAL

#MITZVAHDAYGNH

Volunteers of all ages will have the opportunity to participate in meaningful mitzvah projects. Collectively we will do our part to improve our community through acts of kindness. Registration opens Sunday, February 4 at jewishnewhaven.org/rsvp.

TO JOIN THE PLANNING COMMITTEE: Debbie Brander, debbieb@jccnh.org

TIPS TO KEEP IN MIND FOR END OF YEAR CHARITABLE GIVING

WHAT TO DO IN ORDER TO ENSURE YOU CAN CLAIM A CHARITABLE DEDUCTION FOR 2017:

- For donations of cash (including checks), your donation must be either postmarked or personally delivered to the not-for-profit organization on or before Dec. 31.
- For donations of stock, your stock must be transferred out of your account on or before Dec. 31.
- For donations via credit card, your credit card donation must be processed on or before Dec. 31.

DONATING LONG-TERM APPRECIATED SECURITIES CAN PROVIDE ADDITIONAL TAX BENEFITS

- When you donate long-term appreciated securities, you can claim a

charitable income tax deduction for the fair market value of the securities on the date of transfer, no matter what you originally paid for them.

- You pay no capital gains tax on the transfer. For example, if the securities originally cost \$2,000 and now have a fair market value of \$10,000, you do not pay tax on the \$8,000 gain and you may claim a charitable income tax deduction for \$10,000.

HOW DO GIFTS OF CASH AND SECURITIES COMPARE?

- Gift of \$10,000 cash/ Gift of \$10,000 stock
- Initial cost basis of securities/ appreciation | not applicable | \$2,000/\$8,000
- Capital Gains tax saved or paid, assuming 20% rate | not applicable | \$1,600
- Ordinary income tax savings (35% tax bracket X value of gift) | \$3,500 | \$3,500
- Net tax savings | \$3,500 | \$5,100

*Please note: A different tax rate may apply to you and, accordingly, the charitable benefit you receive may vary. **Gifts of securities may be deductible up to 30% of your adjusted gross income, however, excess deductible amounts may be carried forward for five years. Please consult with your professional advisor to determine your specific situation.

For more information, contact Lisa Stanger, Jewish Foundation Executive Director, lstanger@jewishnewhaven.org, 203-387-2424, x.382. or visit us at www.newhavenjewishfoundation.org or www.jewishlegacynewhaven.org.

What will your Jewish Legacy be?

The Birn Family created a legacy for their synagogue, Congregation BEKI

"The synagogues of my youth do not exist anymore. I made a legacy commitment to BEKI to make sure that our family and future generations never have to say that. The BEKI community has supported us spiritually, intellectually, educationally and socially - it is our privilege to be able to support it back now and in the future,"—Harold Birn

newhavenjewishfoundation.org

jewishlegacynewhaven.org

For more information about Create A Jewish Legacy, contact Lisa Stanger, (203) 387-2424 x382, lstanger@jewishnewhaven.org

Looking Back, Moving Forward with Women's Philanthropy

By Dena Schulman-Green
President, Women's Philanthropy



There's something exciting about the transition from one year into the next. It's a time when one wants to simultaneously look backward and forward- backward to lessons learned and assessment of progress, and forward to new plans and possibilities. As we all did, I spent some time contemplating this transition over Rosh Hashanah.

Last year was an incredible year for Women's Philanthropy. It started with the ideas of being inclusive, of partnering with our community organizations, and of offering a wide variety of high quality events. To implement these ideas, we needed to restructure our leadership. Yet while some pieces were moving, our fundamental goal was the same: to raise dollars to support Jews in our community, in Israel, and around the world. We felt the best way to do this was to show where our dollars go by using every event to highlight a community agency, to "Feducate" about the Jewish Federation and its mission, and to offer

programming on timely issues affecting Jewish families. We thought the best way of maintaining high energy for this goal was to convene the many fabulous women in our community so we could inspire and enjoy each other.

You stepped up in unprecedented ways. In the 2017 campaign, Women's Philan-

thropy surpassed its goal of one million dollars, raising a total of 1,046,000! Perhaps even more significant is the way these dollars came in - at a 10 percent increase, pledge for pledge, and from several new philanthropic leaders. We were joined by 15 new Lions of Judah (gifts of \$5,000 and up), 15 new Pomegranates (gifts of \$1,800-\$4,999), and 39 new Sabras (gifts of \$365-\$1,799). We could not be more pleased with or proud of this strength of commitment. Thank you!

Our attention now turns to looking forward as we begin 2018/5778. The Women's Philanthropy Cabinet has been making plans and imagining possibili-

ties. As always, we invite you to join us as we start the new year. The 2018 campaign theme is "Everyone Counts." As is evident from the last campaign year, this is true in every way. Everyone's engagement and volunteerism counts, and every gift of every amount counts. In our communal effort, every person makes a difference.

Let's build on our accomplishments and set new heights for where we can take Women's Philanthropy. Check out our new video on our website (jewishnewhaven.org/womens-network). We have an array of exciting events scheduled for the coming months. Mark your calendar and move forward into the new year with us.

Schrier Retires After 27 Years at JCC

After more than 27 years of dedicated service to the JCC Fitness Department, Sheila Schrier has retired. Schrier has decided to spend time traveling and enjoying her 'golden years' staying up past 6 p.m. so she does not have to get up at 3 a.m. anymore to open the Fitness Center.



Schrier introduced one of the first personal training programs in the industry to the facility and consistently brought her knowledge and motivation to a variety of classes. Best of luck to Sheila in her retirement!

Westville University to Host Films, Lectures

Westville University is an educational initiative that offers dynamic high level programming to the community reflecting our commitment to Jewish learning, history, culture, law and the state of Israel. It is dedicated to the memory of Irving and Shirley Kroopnick.

UPCOMING EVENTS:

SAT. NOV. 11 7:30 p.m.
Film night with Ed Shrager
"Foyle's War: The White Feather,"
Episode 2, Season 1

WED. NOV. 15 7:30 p.m.
Dr. Liran Yagdar, Yale University
"Jews and Muslims - Friends or Foes?"
Assessing the history of anti-Semitism in Islam

WED. NOV. 29 7:30 p.m.
Prof. Michal Bar-Asher Siegal,
Ben Gurion University
"The Making of a Monk Rabbi:
Rabbi Shimon Bar Yochai and his Cave"

TUES. DEC. 5 7:30 p.m.
Rabbi Dr. Fred Hyman,
Westville Synagogue
"The Myth and Mystery of Ancient Menorah"

SAT. DEC. 9 7:30 p.m.
Film Night with Dr. Peter and Susan Rogol, "Defiant Requiem"

Westville Synagogue
74 West Prospect Street
New Haven
(203) 389-9513
www.westvilleshul.org

JCC's New Makerspace Fosters Creativity

By Jeannette Brodeur
SNH Editor

A brand new, state-of-the-art collaborative makerspace is being created within the Jewish Community Center as a springboard to encourage people of all ages to make, learn, play, explore, invent and share projects and ideas to foster creativity.

Makerspaces are for everyone, from children to adults. It is a space for tinkering, discovering and learning.

Construction is underway for all of the components for the space, including work stations, work benches and seating.

The JCC's new makerspace area will feature both "clean" and "messy" areas to accommodate a wide range of activities including woodworking, ceramics, computer programming, internet classes and sewing. The area will allow makers to create projects that they couldn't do at home.



In addition to open-studio time, there will be classes offered in the space throughout the year.

The interdisciplinary makerspace will merge Science, Technology, Engineering, Arts and Mathematics (STEAM) to spark learning and foster self-expression.

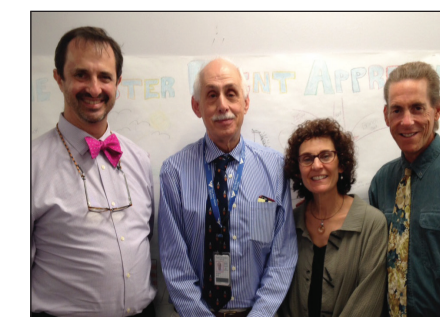
Makerspaces can help develop critical thinking skills and boost self confidence. These creative areas can also foster entrepreneurship.

Makerspaces are even being utilized all over the world as incubators and accelerators for business startups. They act as a platform for innovation and invention.



JFS Welcomes King as New Medical Director

Dr. Robert King of the Yale Child Study Center has joined JFS's Child Mental Health and Counseling Team as its new Child Psychiatrist and Medical Director. Dr. King has been a professor within the Yale Department of Psychiatry and at the Yale Child Study Center since 1998. He brings decades of experience in a variety of childhood psychiatric disciplines to JFS, both as a practitioner and as an academic. Dr. King will be providing psychiatric evaluations, medication monitoring, psychiatric care, and consultation to staff.



From left to right, Ariel Blau, Dr. Robert King, Amy Rashba and Dr. Jonathan Garfinkle, Executive Director/CEO, Jewish Family Service of Greater New Haven.

ANNUAL THANKSGIVING DRIVE
JFS will be packing about 300 Thanksgiving meal bags to be distributed to clients of its Food Pantry &

Nutritional Health Center just before the holiday. Please visit bit.ly/2ytFRbc and select Thanksgiving Campaign as your Designation of Gift.

Announcing One Happy Camper

Did you know that...

As adults, Jewish campers are 21 percent more likely to feel that being Jewish is very important.

- As adults, Jewish campers are 26 percent more likely to be members of a synagogue.

- As adults, Jewish campers are 55 percent more likely to feel very emotionally attached to Israel.

- One out of three Jewish professionals (rabbis, cantors, teachers) started out as counselors at Jewish camp.

- One out of five Jewish educators cited Jewish camp as a key experience that caused them to enter the field (see jewishcamp.org/campopedia/camp-works-the-long-term-impact-of-jewish-overnight-camp for more information).

Yes! We have both-incentive grants for first-time campers AND needs-based aid for overnight Jewish camps.



UP TO \$1000 INCENTIVE GRANT (NOT NEEDS-BASED) FOR OVERNIGHT JEWISH CAMP

The Jewish Foundation, in partnership with the One Happy Camper program of the Foundation for Jewish Camp, as well as an anonymous donor, is thrilled to offer needs blind grants of \$750-\$1,000 for first time campers from Greater New Haven to attend any one of more than 155 traditional and specialty Jewish overnight camps nationwide.

NEEDS-BASED AID FOR OVERNIGHT JEWISH CAMP

The Jewish Foundation, in partnership with an anonymous donor, is thrilled to begin offering needs based financial assistance for campers from Greater New Haven to attend Jewish overnight camps nationwide. Applications and eligibility details will be available shortly, please check www.jewishnewhaven.org/scholarships for details.

DID YOU KNOW THAT NEW HAVEN HAS ITS OWN OVERNIGHT JEWISH CAMP?

Camp Laurelwood is the only Jewish overnight camp in Connecticut! Now celebrating its 80th anniversary! campaurelwood.org



Reunion Coming in January!



For more info, contact: Debra Kirschner | (203) 387-2424 x253 | campdirector@jccnh.org

Camp Laurelwood Celebrates 80th Anniversary



www.laurelwood.org

On Aug. 26, about 400 guests came home again to an evening of dinner and dancing at Camp Laurelwood in Madison, as part of the camp's 80th anniversary celebration. Camp Laurelwood is the only Jewish overnight camp in Connecticut. The successful fundraiser netted more than \$175,000.



How to Keep Pounds Off During Winter Months

By Susan Donovan
JCC Director of Fitness Services

The holiday season might not be the best time to start losing weight, but it doesn't have to be a time gain extra pounds and affect your health. Here are some ways to keep yourself, and your weight balanced over the holidays.

1. SCHEDULE YOUR WORKOUT ROUTINE OR JUST MOVE MORE

Plan to move your body every day. When you make the decision to be more active, decide when and how you are going to do it. And when things come up, just decide to work them into your busy day – walk more, take the stairs, and find ways to keep your body active even if it's in 10 minute bursts.

2. EXPLORE FUN WAYS TO GET THE FAMILY MOVING

Family gatherings usually involve food and sitting around. Get everyone outside any way you can. Re-invent old traditions in movement-based ways. Instead of sitting around talking about what you're



thankful for, have everyone share that while they're out on a walk together.

3. LIST YOUR TOP 2-3 FAVORITE TREATS DURING THE HOLIDAYS & COMMIT TO HAVING ONLY THOSE

We've all got our favorites. List just a few of them, and stick to just them so you can enjoy your favorites without the guilt.

4. SHOP WELL FOR YOURSELF

Stock your kitchen with healthy foods and have them handy. The more convenient they are, the more likely you are to eat them. Instead of thinking about what you shouldn't eat, learn how to enjoy eating better choices

5. KEEP SUGAR OFF OF YOUR VEGETABLES

Let there be no glazing of carrots this year. Sugar has no place on vegetables. This year, find ways to make recipes that are both delicious and nutritious.

6. JUST SAY NO

You probably aren't aware how much extra food you consume just from people offering it to you. Just think twice before you take that food and decide if you really want it.

7. HYDRATE

Keep your water bottle with you at all times. For health purposes, it's recommended that you drink

half of your body weight in ounces, so fill up a large water bottle and sip throughout the day

8. SEEK OUT NEW WAYS TO MANAGE STRESS

Stress raises cortisol, affects your insulin, and makes fat burning a tough process. Breathe deep every day, chew your food longer and don't hesitate to use the word NO.

9. GET YOUR GOALS IN CHECK NOW & LINE UP YOUR 2018 PLAN

Why wait until January? Start working on a few healthy goals now - think of it as practice! Write down and plan for your healthy goals, set a schedule that will work into your lifestyle and explore ways to achieve them.

Remember the key is desire, motivation and a good plan – you bring the desire and let our fitness experts at the JCC help you with a sensible plan and all the motivation you need to be successful!

January will bring a newly renovated JCC Fitness Center at 360 Amity Road, new fitness programs appropriate for all ages and fitness levels, and a brand new online weight loss program that is not only easy to follow, but easy to schedule, with follow-up accountability. So enjoy your friends, family and all the wonderful traditions of the holidays with a mantra of moderation in everything!

DRIVEN TO GIVE

JCC OF GREATER NEW HAVEN
Sunday, December 3
10 a.m. - 2 p.m.

Crest Lincoln of Woodbridge will donate \$20 to the JCC for every test drive!



JCC OF GREATER NEW HAVEN
360 Amity Road, Woodbridge
Contact: Debbie Brander | debbieb@jccnh.org
(203) 387-2424 x276

PAGE
 Hardware & Appliance Co.
 9 Boston Street, Guilford, CT 06437
 203-453-5267 ~ www.pagehardware.com

BRAND NAMES **HOME TOWN SERVICE**

Learning to Be Leaders
 Jewish High School of Connecticut senior Julia Arnowitz (left) and sophomore Zoe Jaffe Berkowitz (right) were JHSC student leaders who participated in the recent BBYO Connecticut Valley Region Regional Leadership Training Institute B'Yachad. Julia was also elected to the BBYO Regional Board.

Blue Marlins Dive Into 23rd Season

By Nicolle Camara
Health & P.E. Associate Director



The JCC Blue Marlins Swim Team is beginning their 23rd season. Our swim team coaches Amy Lyons Kemler, Gaelen Rhoads, Chris Maursky and Pat Sundermann are looking forward to another very exciting and fun-filled year.

The JCC Blue Marlin swim team is a developmental team for children between the ages of 6-18 years old.

Our swim season runs from mid-September until March and the swimmers practice three times a week.

During these months, they work on learning or improving the four main strokes, flip turns, diving, endurance and how to use a pace clock.

They will also compete in several swim meets against other JCCs and local YMCAs. The JCC organizes fun nights for the children so that they can interact with each other outside the pool. The final week of the season, we will compete in a championship meet and end with a banquet.

On Nov. 16, we will hold the 15th Annual Emma Sundermann Swim-A-Thon. Emma Sundermann passed away at a young age, but she loved swimming for the JCC Blue Marlins. In her memory, her parents started a fundraiser which allows the swim team to raise money for the JCC pool.

Coach Pat (Emma's mom) is a very important part of this team, and the swimmers love this event because they know that they are honoring her daughter.

If your child would like to be a part of the swim team and learn about a very healthy lifelong activity, please contact Coach Amy at (203) 387-2424 x270.

YES—We're Back in our Building!

JCC 14TH ANNUAL Craft & Gift Fair

Gifts • Accessories • Home Decor • Pottery • Jewelry and More!
Sunday, Dec. 3 | 10 am - 4 pm
JCC • 360 Amity Rd. Woodbridge
 Free admission. Open to the community.

FUN FOR THE KIDS
 PJ Library FREE Young Family Event (ages 3+) 10:30 a.m.
 FREE Movies & Popcorn (drop off for kids ages 5+).....1-4 p.m.
 FREE Kid's Crafts & Face Painting 10:30 a.m.-2 p.m.

WOMEN'S PHILANTHROPY COFFEE HOUSE
 Come enjoy a cup of coffee or cocoa and delicious pastries. All women who have made a gift of \$365 or more to the Jewish Federation's 2018 Annual Campaign can pick up their swag bag. Enjoy a relaxing morning with your friends and shop the craft fair. Women's Philanthropy will be providing gift wrapping. Questions? Please contact Jen Bayer, jbayer@jewishnewhaven.org
10 a.m. - 12 p.m.

"HELPING TO KEEP AMERICA BEAUTIFUL" SINCE 1969
Wig Towne, LLC
 Expert Consultation in Private Booths
 By Licensed Hairdresser!
 Synthetic & Human Hair
 European Collection
 Monofilament & Lace Front
 Cleaning / Styling
 (203) 239-2480
 117 WASHINGTON AVENUE | NORTH HAVEN
 North Haven Shopping Center
 (Rte 5, Exit 11 or 12, I-91)
 Open
 Tue-Fri: 10 am-5 pm
 Saturday: 10 am-3 pm
 Sunday/Monday by appointment



women
of
the wall
נשות
הכפר

Learn about
Pluralism

Thursday, Nov. 30
7-8:30 p.m.

Congregation
Beth El-Keser Israel
85 Harrison Street,
New Haven

Questions?
Jennifer Bayer
Assistant Director,
Development
(203) 387-2424 x320
jbayer@jewishnewhaven.org

Jewish Federation
OF GREATER NEW HAVEN | Women's
Philanthropy

Jewish Foundation
OF GREATER NEW HAVEN | Women
of Vision

RSVP jewishnewhaven.org/rsvp

Jewish Federation
OF GREATER NEW HAVEN | Women's
Philanthropy

Be a Part of Something Greater

Each woman who gives,
no matter the amount,
is a philanthropist.

*Be a part of something
greater; an entire
sisterhood who is
building a better world,
being counted, &
amplifying each
other's giving power.*

From across the spectrum
of our community.

From across the continent.
In every shape and size.

We ensure the future of
our community and the
continuity of our Jewish
values.

*Let's make the world a
better place together.*

Everyone Counts.

Women's Philanthropy President
Dena Schulman-Green



LION OF JUDAH
With a gift of \$5,000
or more to the
Annual Campaign,
a woman earns the
distinction of the
Lion of Judah. The
Lion of Judah pin

is worn by 17,500 women in the world
and symbolizes their dedication
to the Jewish community.

To thank them for their
philanthropic leadership, Lions
are invited to special missions,
programming and conferences.
Every two years, Lions of Judah
gather for three phenomenal days
of extraordinary learning, sharing
and celebration, at the International
Lion of Judah Conference to
experience the world's leading
experts of religion, culture, art,
business and politics.

We invite you to join the
Greater New Haven Pride!

Lion of Judah Chair
Dana Schwartz



**POMEGRANATE
SOCIETY**
The Pomegranate
honors all women
who make a personal
gift of \$1,800-\$4,999
to the Annual
Campaign.

The Midrash tells us that the
pomegranates has 613 seeds, which
corresponds with the number of
mitzvot of commandments found in the
Torah. Through Federation, women's
acts of tzedakah are far reaching.

More than 7,000 women across
North America proudly wear the
Pomegranate Pin, signifying their
personal commitment to and passion
for their communities and their
Jewish families around the world.

Women who are giving at the
Pomegranate level attend joint
programs with Lions of Judah
throughout the year.

Pomegranate Chair
Nancy Cohen



SABRA SOCIETY
All women who give
a dollar a day to the
Annual Campaign, up
to \$1,799 annually,
make our Sabra
Society. With an
impact exceeding

\$100,000 to our Annual Campaign,
our Sabras create social justice, aid
the vulnerable, preserve human
dignity and build a Jewish identity.
The Sabra is a symbol of the native
Israeli – tough on the outside and
sweet on the inside. It endures and
continues to thrive, just as we do
and our community does.

Women at this giving level wear
a Sabra leaf charm to signify their
commitment and sisterhood and
most special events throughout
the year.

Sabra Society Co-Chairs
Lauren Miller & Emily Sandberg

Contact: Jennifer Bayer, Assistant Director of Development (203) 387-2424 x320 | jbayer@jewishnewhaven.org



HAPPY HANUKKAH

Your official guide to the
Greater New Haven area
celebrations.

Jewish Federation
OF GREATER NEW HAVEN



Local Jewish Author Releases New Hanukkah Book for Children

By Jeannette Brodeur
SNH Editor



Just in time for Hanukkah, local author Renee Londner, of Prospect, recently released her third children's book entitled, "The Missing Letters, A Dreidel Story." The book, illustrated by Iryna Bodnaryk, tells the story of how three of the four Hebrew letters at the dreidel maker's shop are jealous of everyone's favorite letter, the Gimel, so they decide to hide all of the Gimmels so the dreidel maker can't use them.

The inspiration for Londner's newest book came from an interesting conversation she overheard. "Several years ago as I was browsing in a Judaica shop, I overheard the owners lamenting about where they could possibly put all the dreidels they ordered," she explained. "My imagination went wild as I envisioned hundreds of dreidels in a rainbow of colors."

The dreidel game has always been an important part of Londner's family's Hanukkah celebrations. "And of course everyone always wants to land on gimel so they can win the pot," she said. "I imagined a scenario where the nuns, heys and shins were jealous of the gimmels and the rest of the story came together from that point."

Londner's last book, "Stones for Grandpa" also had a Jewish theme. It focused on the Jewish custom of placing a small stone on the grave of a loved one. The book paid tribute to her husband of 33 years, Michael, who died of cancer in 2007. "Stones for Grandpa" was published in 2013 and won a Sydney Taylor silver honor from the AJL (Association of Jewish Libraries).

Her first book, "Ruby's Whistle" was published in both English and Spanish in 2004.

Londner, a retired special education teacher, has always loved to write. Her very first published work was a poem she wrote as a sixth grader for Junior Scholastic Magazine.

Many of her stories have Jewish themes, but not all of them. "I enjoy researching and writing about other cultures," Londner said. Her stories have appeared in Spider Magazine as well as Mishpacha Jewish Family and Shofar magazines.

The first Jewish author to inspire her was Chaim Potok. "I still reread his books," Londner admitted. As a children's writer, she is thrilled to see so many Jewish themed books for children. "I'm happy to say there's an abundance of Jewish stories being published for children and the PJ Library does a great job of dispersing these," Londner said. Her book, "Stones for Grandpa" was featured in the PJ Library set in 2009.

Londner just completed her first novel for middle grade students and her next project is a biography. "It's the first bio I've ever tackled so I'm busy researching the format," she revealed.

Londner was born in New Haven and grew up there, but she lived in several states before returning home again to Connecticut, where she has lived for the last 11 years. She has two daughters and three grandchildren. She has been a member of Temple Beth David in Cheshire since returning to Connecticut. When she's not writing stories, Londner loves writing haiku/senryu poetry and attending performances at local theaters. She also loves animals and has two cats she adopted from a rescue shelter.

How do you spell Hanukkah?

By Micah Sachs
InterfaithFamily.com

At InterfaithFamily.com, we spell it H-A-N-U-K-K-A-H. But search our site and you'll find references to CHANUKAH (157 search results), HANNUKAH (72), HANUKAH (46), CHANUKKAH (13) and HANUKA (5).

HANUKKAH is the spelling of choice at non-Jewish websites like Wikipedia and Blue Mountain and tends to be the preferred spelling of transdenominational or progressive Jewish organizations, like My Jewish Learning, the Conservative movement and the Reconstructionist movement.

Meanwhile, more traditional organizations—like Chabad, Aish HaTorah and the Orthodox Union—go with CHANUKAH. But there is one big exception to this division between traditional and progressive: the progressive Reform movement prefers CHANUKAH. Meanwhile, Judaism 101, one of the oldest and most frequently cited Jewish reference sites, goes with CHANUKKAH.

A few years ago, Robert Siegel of NPR interviewed Rabbi Danny Zemel of Temple Micah in Washington, D.C., to get to the bottom of the spelling mystery. They didn't.

While you can find just about any spelling you can imagine online (including XANUKAH, with 162 references on Google, and HANNUKAH, with 154), two spellings have separated themselves from the pack: HANUKKAH and CHANUKAH. HANUKKAH produces 11 million search results, while CHANUKAH produces 2.6 million.

No other spelling produces more than 600,000 results. This is a marked change from three years ago, when Siegel said CHANUKAH was the leader with 2.8 million references, followed by HANUKAH with 691,000.



By Stacey Battat
PJ Library Professional | pjlibrary@jewishnewhaven.org

The PJ Library book, "Gracie's Night: A Hanukkah Story," by Lynn Taylor Gordon, is about a sweet Hanukkah mitzvah for the homeless. It closes with a lovely poem:

Become Someone's Miracle; be someone's light!
Give up just one gift on one Hanukkah night.
Someone in need could be waiting for you.
Gracie would say "it's the right thing to do!"



For many families, particularly with young children, materialism becomes a concern during Hanukkah. They are often showered with gifts from parents, grandparents and other places.

Many parents look for alternatives such as books or items for warmth (socks, pajamas) to avoid over-indulging their children.

In our family, once the kids were old enough, we would choose a night – particularly if Christmas fell during Hanukkah – to work at a soup kitchen or serve Christmas dinner, visit a hospital, or TowerOne/Tower East. These opportunities to read or sing with the infirmed or elderly added another dimension to their holiday observance. A number of Jewish communities across the United States have celebrated similarly, calling it "The Fifth Night," whereby Jews young and old donate a night of Hanukkah gifts to a chosen charity.

As we move into the season of giving, we can all consider a "Fifth Night" opportunity to be "someone's light."

We can teach our children to expand our Jewish community light by inviting their friends, especially those who may have a Jewish connection, to partake in these efforts. PJ Library, as well as the many Jewish organizations across Greater New Haven, will offer many moments for group togetherness. Enjoy one of these, or create your own at home for Hanukkah! As we enter a season with less natural light, think about the many resources we have to offer, and help spread the giving intention by inviting others into our homes, hearts, and customs to make the world a brighter place.

HANUKKAH RECIPE

Walnut-Cherry Cheese Latkes With Chunky Cherry-Applesauce

They make a wonderful light supper, breakfast, or brunch. Or serve the latkes as a finish to a more elaborate meal.

INGREDIENTS

1/2 lb. farmer cheese (a 7.5 oz. package is fine), drained

2 tablespoons cream cheese, room temperature

4 large eggs, separated

1/2 teaspoon vanilla extract

1/4 teaspoon almond extract

5 tablespoons all-purpose flour

1 tablespoon light brown granulated sugar

1/4 teaspoon salt

1/4 cup dried tart cherries, plumped in hot water 10 minutes, then drained

1/3 cup finely chopped lightly toasted walnuts

Unsalted butter and mild vegetable oil, like avocado or canola, for frying

INSTRUCTIONS

1. Combine both cheeses, egg yolks, and extracts in a food processor and process until well-blended and smooth. Add the flour, sugar, and salt, and pulse to blend. Transfer the batter to a large bowl. Mix in cherries and walnuts.

2. Whip the egg whites in a separate bowl until stiff, but not dry. Gently fold the whites into the batter.

3. Heat 2 tablespoons each of butter and oil in a heavy 10- to 12-inch skillet over medium heat until hot but not smoking. Working in batches, drop the batter by heaping tablespoonfuls into the skillet, and fry until the bottoms are golden brown, 2-3 minutes. Turn, using two spatulas, and cook other side until lightly browned, 1-3 minutes. Remove and transfer to plates or keep warm on a heated platter or in baking sheet in a 200-degree oven, while you repeat with remaining batter. Add more butter and oil if necessary, always allowing the fat to get hot before adding more batter. Serve with chunky cherry-apple or other fresh fruit sauce. Yield: 3-4 servings



Hanukkah Events

Come Spin the Dreidel at CBSRZ's Festivities

All are welcome to spin the dreidel on Sunday, Dec. 10, at 11 a.m. as children join the youth and educators at CBSRZ for a fun Hanukkah celebration.

This celebration will include crafts, singing, and lots of games and Hanukkah food favorites.

Congregation Beth Shalom Rodfe Zedek
55 East Kings Highway in Chester
(860) 526-8920, office@cbsrz.org

Westville Synagogue Hosts Party

Westville Synagogue is hosting a Hanukkah Party on Sunday, Dec. 17, from 7-10 p.m. All are welcome.

Westville Synagogue
74 West Prospect St.
New Haven.
(203) 389-9513,
www.westvilleshul.org.

Hanukkah Celebration at Mishkan Israel

Celebrate Hanukkah in joyful surroundings. The community is invited to Congregation Mishkan Israel's Hanukkah Dinner and Service on Friday, Dec. 15.

Dinner begins at 5:45 p.m. with a Shabbat dinner that features traditional Friday night foods as well as latkes and other favorite Hanukkah treats. The evening will conclude with a Shabbat Family Service at 7 p.m. followed by a special oneg. There is a fee for dinner.

Congregation Mishkan Israel
785 Ridge Road, Hamden.
(203) 288-3877
cmihamden.org

Enjoy Candle Lighting, Stories, Songs with PJ Library

Celebrate Hanukkah with Dizzy the Dreidel and PJ Library on Sunday, Dec. 10, and Sunday, Dec. 17, from 2-3 p.m. at Claire's Corner Copia, 1000 Chapel Street, New Haven, and enjoy a free Hanukkah storytime!



On Sunday, Dec. 17, PJ Library will also hold a free Family Hanukkah Story, Songs & Candle Lighting at Barnes & Noble, 1375 Boston Post Road in Milford. Come together to celebrate Hanukkah with candle lighting, story and songs with PJ Library, families with young children and area clergy and friends. All are welcome. Drop in at one of five programs to hear a story and sing-a-long with the rabbi. Program times are 10 a.m., noon, 2 p.m., 3:30 p.m. and 5:30 p.m.

For more information, contact Stacey Battat, PJ Library Professional, at (203)387-2424, x 317, or sbattat@jewishnewhaven.org.

BYOL - Bring Your Own Latkes to Temple Emanuel



Temple Emanuel celebrates Shabbat Hanukkah with a special Pot-Latka Dinner and Service on Dec. 15.

Bring your family's favorite latkes to share with Temple Emanuel and stay for the Shabbat Service beginning at 6:30 pm.

For more information, call (203) 397-3000. Temple Emanuel of Greater New Haven is located at 150 Derby Ave. in Orange.

 Jewish Federation OF GREATER NEW HAVEN

Thursday Dec. 14

Latkes & Vodka

Join us for Latke Tastings, Drinks & Desserts

LIVE MUSIC PERFORMED BY DAVID CHEVAN QUARTET

Thursday, December 14 | 7-8:30 p.m.
Guilford Yacht Club
379 New Whitfield Street, Guilford

Couvert: \$36

Brian Levy | Director of Outreach, Engagement & Community Relations
blevy@jewishnewhaven.org | (203) 387-2424 x375



Wishing you a happy, healthy and peaceful Hanukkah.

May this season be one of joy and contentment.


U.S. Senator Chris Murphy

PAID FOR BY FRIENDS OF CHRIS MURPHY



Banners Depict Pivotal Moments in Israel's History

As Israel celebrates 70 years of independence, we are delighted to share in the celebration by highlighting its important contributions to the world in technology, medicine, science, music, art and culture. Look for interesting stories about the State of Israel in each issue of Shalom New Haven in 2018.

Since its inception, and even prior to its establishment as a state, Israel produced a special banner for each of its Independence Days (with the exception of 1957). A prestigious competition is launched each year to select the winning poster which best reflects the shared values of the state and the uplifting spirit characterizing Yom Ha'atzmaut. A review of the banners though the decades takes us through some of the pivotal moments in Israel's history and the country's journey to maturity. What will the poster of the 70th Independence Day look like? Stay tuned.



1 Israeli Independence Day, 1949
Yohanan Simone
National solidarity is reflected through this

image of strong hands holding the flag in a social realism style. The passage is from their Declaration of Independence: "It is the natural right of the Jewish people to be masters of their own fate, like all other nations, in their own sovereign State."



10 Israeli Independence Day, 1958
Miriam Karoly
A sense of euphoria characterized the period. As more immigrants found their way out of refugee absorption camps and into permanent dwellings, Israel was slowly coming out of austerity. Some immigrants experienced economic welfare, with compensations from Germany pouring in. The political sphere was stable under Ban-Gurion's leadership and the borders were relatively calm. The letter "Yud" in the poster represents the number ten, and ten people are working as one in the mosaic that is the state of Israel.




20 Israeli Independence Day, 1968
Kopel Gurwin
The menorah with the guarding lions on each of its sides has been a central visual element in Jewish iconography and particularly in Jerusalem. The unification of the city in 1967 gave way to its inclusion as an expression of Israel's sovereignty. The menorah is depicted as a living plant with the word "Jerusalem" spelled in Hebrew across its flowers.

30 Israeli Independence Day, 1978
David Tartakover
This minimalist poster features the word "Shalom" (in Hebrew) in black, with a golden "lamed", which means 30, over a blue sky above white clouds. The typography is based on ancient Sephardi calligraphy. (continued on page 26)



More Hanukkah Events

Read 'Hershel and the Hanukkah Goblins' with Rabbi Sommers & PJ Library

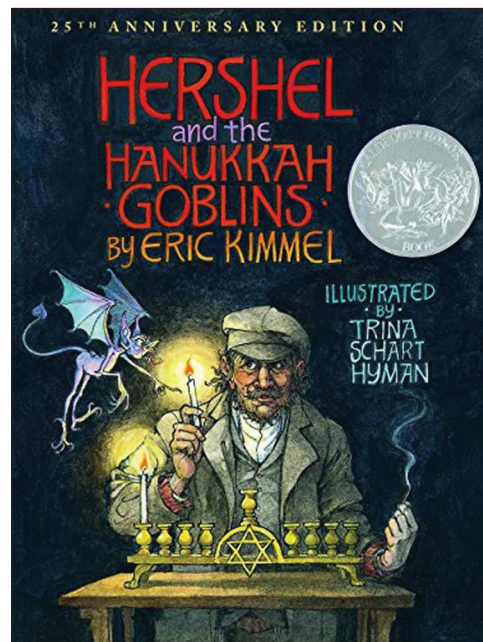
 PJ Library
JEWISH BEDTIME STORIES AND SONGS

On Dec. 14 from 4:30-5:30 p.m., come to the Guilford Free Library, 67 Park St. in Guilford, for the annual reading of "Hershel & the Hanukkah Goblins" and a PJ Library Hanukkah sing and dance along.

The program is free and open to the public.

Please RSVP to Guilford Free Library at: guilfordfreelibrary.org or call (203) 453-8282.

For more information, contact Stacey Battat, PJ Library Professional for Greater New Haven, at (203) 387-2424 x317.



Community Hanukkah Celebration Set for Dec. 18 at JCC Campus

Join together with the community to light the menorah and celebrate Hanukkah with a DJ, latkes, games and giveaways on Monday, Dec. 18, from 5:30-7:30 p.m. at the JCC of Greater New Haven, 360 Amity Road in Woodbridge.

JCC Youth Programming and Family Events Coordinator
Eliana Sugarman | elianas@jccnh.org, (203) 387-2424, x306.



Reminiscence with friends at our **Neighborhood Reunion**

Sunday, November 12, 2017
12:00 pm - 2:00 pm

The Towers
18 Tower Lane
New Haven, CT 06519

We are having a reunion to celebrate our history as a community. Enjoy an old-fashioned deli luncheon with mile-high sandwiches and entertainment!

\$25.00 per person

Please RSVP to Melly at jermell@towerone.org or 203-772-1816 x280

Tributes & Remembrances

To purchase a tribute card:
jccnh.org, jewishnewhaven.org, newhavenjewishfoundation.org

JEWISH FEDERATION

In honor of SITU & RANJANA'S WEDDING
Kenneth Braffman
In memory of HENRY KASHA
Endre & Aniko Sarkany
Daniel Altman
In honor of LISA STANGER
Kayla & Josiah Bisbee
In honor of ANDY SARKANY'S HOLOCAUST LECTURE
Kyle Miller and Hooker School
In memory of MARTIN ZWERDLING
Dr. Greg Colodner & Lisa Stanger
In honor of LINDSAY SKLAR'S WEDDING
Dr. Greg Colodner & Lisa Stanger
In memory of GERALD BARKER'S MOTHER
Judy Alperin
Mark & Amy Holtz
In honor of JEFFREY HOOS INDUCTION AS A FELLOW TO THE INTERNATIONAL COLLEGE OF DENTISTRY
Mark & Amy Holtz

JEWISH FOUNDATION

JULIE KOVAR FUND
In memory of JULIE'S BIRTHDAY ON AUGUST 9TH
Phyllis Kaufer
Pamela & Jeffrey Bryer
JEWISH FOUNDATION OF GREATER NEW HAVEN UNRESTRICTED FUND
In memory of BERYL BLOCH
Linda Reece
Jaime Nale
RAVSKI FAMILY FUND IN MEMORY OF RUTH & PHILIP RAVSKI AND PERLA & JERRY RAVSKI FOR THE BENEFIT OF MARCH OF THE LIVING AND HOLOCAUST EDUCATION
In memory of PHILIP RAVSKI
Mimi & Ephrem Glenn
FRIENDS OF THE JEWISH COALITION FOR LITERACY
In honor of CRAIG SKLAR'S BIRTHDAY
Donna & Stan Hersh
FRIENDS OF THE JEWISH COALITION FOR LITERACY
In honor of EDELGLASS'S MILESTONE ANNIVERSARY
Donna & Stan Hersh
FRIENDS OF THE JEWISH COALITION FOR LITERACY
In honor of SUSAN BUXBAUM'S AND NANCY OLINS' SPECIAL BIRTHDAYS
Enid & Ron Groves

FRIENDS OF THE JEWISH COALITION FOR LITERACY
In memory of KATHLEEN P. HARRIS
Norma Jean Mitchell
In memory of THALIA GANDELMAN
Lauren Sepowitz
JUDITH A. KAYE FUND FOR IMPROVING JEWISH EDUCATION THROUGH TEACHER TRAINING
In memory of JUDITH KAYE
Sydney Perry
JOAN EDELSTEIN DAVENNY FUND FOR EZRA ACADEMY
In memory of JOAN DAVENNY
Sydney Perry
LILYAN AND MAURICE ULLMAN FUND
In memory of ROBERT LANDOWNE
Nancy Cohen
DAUGHTERS OF 1853 NURING SCHOLARSHIP FUND
In memory of RUTH BAUMAN LEICHTER, CLAIRE BAUMANN GINSBURGH AND REGINA WEIL BAUMANN
Mary Ann Flagg

Community Calendar

Event details subject to change. Please visit jewishnewhaven.org/events or jccnh.org/events.

nov.

Wheels and Wine Partners Pottery, Nov. 2, & Nov. 16. 6-8 p.m., \$60, The Clay Date, 146 Amity Road, New Haven, Contact: Grace Koo, (203) 387-2424 x228, gracek@jccnh.org

A Jewish Joke, Nov. 4, 8-10 p.m., \$5, \$12, \$18, Amity Regional High School Theater, 25 Newton Road, Woodbridge. Contact: Grace Koo, (203) 387-2424 x228, gracek@jccnh.org

A Jewish Joke, Nov. 5, 2-4 p.m., \$5, \$12, \$18, Amity Regional High School Theater, 25 Newton Road, Woodbridge. Contact: Grace Koo, (203) 387-2424 x228, gracek@jccnh.org

Around the World Cooking Series, Every Monday from Nov. 6- Dec. 11, 7-9 p.m., per class: \$18 members/\$21 community, JCC of Greater New Haven Kitchen, 360 Amity Road, Woodbridge. Contact: Grace Koo, (203) 387-2424 x228, gracek@jccnh.org

Author Susan Silver, "Hot Pants in Hollywood," Nov. 14, 10:30 a.m.-12:30 p.m., \$5 members/\$10 community, Woodbridge Club, 10 Milhaven Road, Woodbridge, Contact: Grace Koo, (203) 387-2424 x228, gracek@jccnh.org

A Taste of Honey, Nov. 18, 7 p.m., free to Hebrew school teachers, \$12 students, senior, JCC members/\$18 community, Congregation Mlshkan Israel, 785 Ridge Road, Hamden, Contact: Grace Koo, (203) 387-2424 x228, gracek@jccnh.org

Women of the Wall, Nov. 30, 7-8:30 p.m., \$12, Congregation Beth El-Keser Israel (BEKI), 85 Harrison Street, New Haven, Contact: Jennifer Bayer, (203) 387-2424 x320, jbayer@jewishnewhaven.org

dec.

14th Annual Holiday Craft and Craft Fair, Dec. 3, 10 a.m.-4 p.m., FREE, JCC of Greater New Haven, 360 Amity Road, Woodbridge, Contact: Debbie Brander, (203) 387-2424 x276, debbie@jccnh.org

Women's Philanthropy Coffee House at the Craft Fair, Dec. 3, 9:30 a.m.-12 p.m., FREE, JCC of Greater New Haven, 360 Amity Road, Woodbridge, Contact: Jennifer Bayer, (203) 387-2424 x320, jbayer@jewishnewhaven.org

Driven to Give, Dec. 3, 10 a.m.-2 p.m., FREE, JCC of Greater New Haven, 360 Amity Rd., Woodbridge, Contact: Debbie Brander, (203) 387-2424 x276, debbie@jccnh.org

PJ Library & Ezra Academy Family Fun event at the JCC Fair, Dec. 3, 10:30 a.m.-11:30 p.m., FREE, JCC of Greater New Haven, 360 Amity Road, Woodbridge, Contact: Stacey Battat,

(203) 387-2424 x317, pjlibrary@jewishnewhaven.org

Author David Dalin, "Jewish Justices of the Supreme Court" Dec. 4, 7-9 p.m., FREE, 18+. Temple Beth Tikvah, 196 Durham Road, Madison, and Dec. 4, 2-4 p.m. FREE, Evergreen Woods, 88 Notch Hill Rd, North Branford. Contact: Grace Koo, (203) 387-2424 x228, gracek@jccnh.org

Women's Philanthropy Sabra Society Event at the Chefs Emporium, Dec. 5, 6:30-8:30 p.m., \$36, Chefs Emporium, 449 Boston Post Road, Orange. Contact: Jennifer Bayer, (203) 387-2424 x320, jbayer@jewishnewhaven.org

PJ Library Claire's Corner Copia Hanukkah storytime, Dec. 10, 17, 2-3 p.m., FREE, 3+ with caregiver. Claire's Corner Copia, 1000 Chapel Street, New Haven. Contact: Stacey Battat, (203) 387-2424 x317, pjlibrary@jewishnewhaven.org (continues on next page)

Say goodbye to 2017 with a \$20.17 Membership Fee Good through 12/31/17*

www.jccnh.org/current-promotion

*New membership rates effective 1/1/18. Restrictions may apply.

FINE PAINTING LLC BERK'S
RESIDENTIAL & COMMERCIAL
ERIK BERK
OWNER & MASTER PAINTER
A Career Painter Since 1973

Dedicated to Honesty, Integrity & Craftsmanship For Over 45 Years of Painting Connecticut Homes

Whether your home was built in the 18th century or the new millennium...Berk's has the painters for the job.

Custom Interiors • Exterior Painting • Specializing In Historic • Home Restoration
Hot Water Power Washing Deck Restoration • Carpentry Repairs
Cedar Roof & Siding: Cleaned, Restored & Oiled • Faux Finishes
Wallpaper Removal & Installation • Plaster Repair, Decorative • Plaster, Colonial & European

A public history of ethical practices backed by over a decade of BBB A+ Ratings
A staff of career expert painters who will bring over 100 years of combined experience to your home
At Berk's Painting, we believe when you pay for professionals you should get them!
Not summer help or untrained labor.

Visit Our Website for Photo Journal & Testimonials www.BerksPainting.com

Serving Southeastern CT & The Shoreline Insured & Licensed CT #611346 & RI Lic #34938

FREE IN HOME CONSULTATION SATISFACTION GUARANTEED

DAYS 860.303.9408 EVENINGS 860.367.0657

Arnold's Jewelers
The North Haven Diamond Center

Your Headquarters for Chanukah gifts for that special someone!

Mention this Ad for **25% OFF** on watches!

LARRY LAZAROFF

117 Washington Avenue
North Haven Shopping Center
North Haven, CT 06473
Phone: (203) 239-4291
Email: laztwo@aol.com
Web: TheArnoldsJewelers.com

dec. (continued)

Latkes and Vodkas, Dec. 14, 7-8:30 p.m., \$36 per person, 21+. Guilford Yacht Club, 379 New Whitfield St., Guilford, Contact: Brian Levy, (203) 387-2424 x375, blevy@jewishnewhaven.org

Side Seating) \$45.00 each. For tickets, please contact the Long Wharf Theatre Box Office: (203) 787-4282, use the code: JFGNH

"The Chosen" Group Theater Night, Dec. 16, 8-10 p.m., Section D (Center Seating) \$58.75 each, Section B (Mid

PJ Library Family Hanukkah Story, Songs & Candle Lighting at Barnes & Noble, Dec. 17, 10-6 p.m., FREE, 3+ with caregiver. Barnes & Noble, 1375 Boston

Post Road, Milford, Contact: Stacey Battat, (203) 387-2424 x317, pjlibrary@jewishnewhaven.org

Community Hanukkah Celebration, Dec. 18, 5:30-7:30 p.m., FREE, JCC of Greater New Haven, 360 Amity Rd., Woodbridge, Contact: Eliana Sugarman, (203) 387-2424 x306, elianas@jccnh.org

New Year's Eve Beach Party, Dec. 31, 1-4 p.m., 3+ with caregiver. \$5 per child; \$10 Family max, JCC of Greater New Haven Pool, 360 Amity Road, Woodbridge, Contact: Eliana Sugarman, (203) 387-2424 x306, elianas@jccnh.org

Foundation Gives Tougas Summer of a Lifetime

Recognizing the impact of Israel travel/experiences, the Jewish Foundation of Greater New Haven provides scholarships for both short-term (minimum of three-week program) and long-term organized Israel educational programs for Greater New Haven area youth ages 14-19.

For 2018 summer trips, applications are due by March 9, 2018. For 2018-2019 gap or academic year programs, applications are due by May 4, 2018.

Here is part one of a three-part series where a young person who benefitted from a Jewish Foundation scholarship writes about their experiences.

Mia Tougas, of Cheshire Israel Experience Scholarship Recipient

I want to thank you and the Jewish Foundation of Greater New Haven for helping me have a summer of a lifetime. I have always identified as a Jew and I always will.

This past summer, thanks to the help of the Jewish Foundation of Greater New Haven, I traveled to Prague, Poland, and Israel.

In Prague and Poland, I saw both the vibrant life of Jews as well as the horrors of the last century. In Israel, I traveled the roads our ancestors took through the Negev, prayed at the Western Wall, and enjoyed a glorious sunrise atop Mount Masada. These experiences deeply affected me and I look forward to sharing them with younger teens.

Chavaya, means "experiences." In the middle of the trip, my group was split up and we each engaged in different

activities for four days. The chavaya I chose was archaeology, which quickly turned into one of the highlights of my trip. I enjoyed making new friendships



and digging deeper into Israel's history (pun intended). I excavated a pot that still had some oil in it from hundreds of years ago.

The two weeks following, I got to spend time learning about Israel's history and establishment. During those weeks, I developed even deeper relationship with Israel and the Jewish culture that goes with it. My most sincere thanks go to the JFGNH for supporting a life-altering Jewish experience.

For more information on Foundation scholarships, go to: jewishnewhaven.org/scholarships.

THE "B" FOUNDATION

Now accepting grant applications from Internal Revenue Service qualified 501 (C) (3) organizations which seek assistance consistent with the goals of the "B" Foundation to **help feed, care, or educate society**. The grants will range from \$1,000 to \$10,000 and will be awarded by the end of the calendar year. Please submit your written request by

November 15, 2017 to:

The "B" Foundation

P.O. Box 3709, Woodbridge, CT 06525



PERSONAL • BUSINESS • TRUST • INVESTMENT SERVICES



Essex, 35 Plains Road, 860-767-2573 • Essex, 9 Main Street, 860-767-8238
 Chester, 203 Middlesex Avenue, 860-526-0000 • Madison, 99 Durham Road, 203-318-8611
 Old Saybrook, 155 Main Street, 860-388-3543 • Old Lyme, 101 Halls Road, 860-434-1646
 Toll-Free: 877-377-3922 • www.essexsavings.com
 Member FDIC Equal Housing Lender

SHORELINE HAPPENINGS

Levy Named as Federation's New Outreach Director

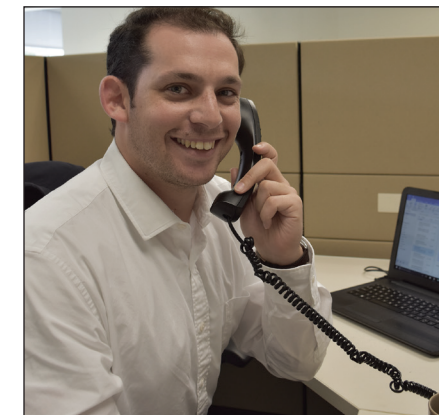
Brian Levy, of Branford, has joined the Jewish Federation of Greater New Haven as the new Director of Outreach, Engagement & Community Relations.

Levy, who grew up in Branford and attended Temple Beth Tikvah in Madison, graduated from Eastern Connecticut State University in 2014 with a degree in political science and general economics. He managed several political candidates at the state and local levels, working with the Connecticut Senate Democratic Caucus and the Connecticut Democratic Party. He was a staffer at the Connecticut General Assembly and most recently served as the Senior Legislative Coordinator for one of the state's top lobbying firms. Levy also served as an advisor to BBYO and as a pitching coach for Madison baseball. In this newly created position, Levy will serve as

the Director of the Jewish Community Relations Council with a specialized focus serving as the primary contact for the Jewish Federation on the Shoreline. He will work primarily out of the Federation's Shoreline office in Guilford.

In addition, Levy noted that he will be conducting outreach on behalf of the Jewish Federation of Greater New Haven into the Jewish community on the Shoreline "to strengthen and grow the Jewish community of Greater New Haven."

He looks forward to getting out into the community and meeting everyone. "I have been fortunate enough to have had several meetings in my first few weeks with important community lay leaders, chairs of the Jewish Community Relations Council, members of our Shoreline Advisory committee,



and coordinators of our amazing community programs," Levy said.

His goal is to be able to play a major role in growing the Federation's presence over the Q Bridge and "engage our shoreline Jewish community in all of the wonderful programming, advocacy, education, and overall community building the Federation has done

as a hub of in our Jewish community." Levy said the most important part of his job right now is simply listening and learning from the community members.

As the Director of the Jewish Community Relations Council, Levy said he is working to develop an agenda of issues to focus on for the coming year. Ideally, he'd like the council to play a much bigger role in developing relationships with state and local leaders. "Working with the Jewish Federation Association of Connecticut (JFACT) and our Federation delegation is an integral next step for our advocacy," he stressed.

Levy is excited about his new position and hopes to meet as many people as possible. Contact him by phone at (203) 387-2424, x375 or by email at blevy@jewishnewhaven.org.

TO CONSIDER FOR YOUR NEXT BIG EVENT:

*Present this ad and receive Free 16 x 20 Canvas with any package
203. 393.3862
nilo56@yahoo.com
www.peterolin.smugmug.com

Peter Harris Olin Photography

Liverpool PRODUCTIONS
 CALL CHARLES!!! 203.795.4737
 DJ/Music/Entertainment for any Occasion
 Proud to be Entertaining the Community Since 1978!

WE MAKE *gift giving* EASY

The perfect gift for any occasion.

Madison Beach Hotel gift cards can be used for Overnight Stays, Spa Services at Sounds of the Sea Spa, Sunday Brunch, or a delicious meal in The Wharf Restaurant.

Purchase \$100 in Gift Cards and Receive a **\$20 BONUS GIFT CARD** NOV 23 - DEC 24, 2017



SHORELINE HAPPENINGS

Temple Beth Tikvah Welcomes Cabaret-Singing Rabbi for Weekend



Temple Beth Tikvah welcomes Scholar-In-Residence Rabbi Deborah Zecher, for the weekend of Nov. 17-18. On Friday night, Nov. 17, during the 7:15 p.m. Shabbat service, she will present "Sermon in a Song," — a lively, interactive musical program.

On Nov. 18, the Saturday event begins with dinner and Havdalah at 6 p.m., followed by Rabbi Zecher's presentation "Broadway Bible" — a program that combines beloved show tunes with familiar Biblical and midrashic tales. It's torah study from a completely different perspective.

Rabbi Zecher has been singing all of her life, primarily in the synagogue. She is the Rabbi Emerita of Hevreh of Southern Berkshire, after having served as rabbi and leader of music from 1992-2014.

Zecher is a graduate of Brandeis University and was ordained by the Hebrew Union College – Jewish Institute of Religion in NYC.

Rabbi Zecher performs cabaret all over the country and is a member of the Adult Cabaret Workshop at the Berkshire Music School. She has performed with

Cabaret-to-Go, at Don't Tell Mama's in New York City and at the National Cabaret Conference at Yale. All weekend events take place at Temple Beth Tikvah, 196 Durham Road in Madison. All programs are open to the community and free with TBT membership. On Saturday evening, a contribution is requested from non-members.

To register / RSVP call the TBT office at (203)245-7028 or go to www.tbtsshoreline.org. office@tbtsshoreline.org.

MILANO SELF-STORAGE
Family run since 1971

3 Madison Locations
Easy Access From I-95 Exits 59, 60 & 61

- Over 600 Units, 37 Different Sizes
- Heated/AC & Garage-Style Units
- 24 Hour Access
- Boxes, Packing Supplies & Locks For Sale
- Senior Citizen Discounts
- Store Furniture, Cars, Boats, Business Supplies

203-245-9599
Storage@MilanoDev.com
www.MilanoDev.com
40 MUNGERTOWN ROAD, MADISON

'Rags' Tells Jewish Immigrant Mother's Story

By Michael Brennan
Special to SNH

"Rags" features one of the most prestigious collaborations in the history of Broadway featuring a book by the writer of "Fiddler on the Roof," music by the composer of "Annie" and lyrics by the lyricist of "Wicked."

After an all-too-brief Broadway run in the mid '80s, Goodspeed Musicals decided to try their hand at re-working the show. When they asked David Thompson to reimagine the late Joseph Stein's script, he embraced the opportunity.

"I thought of it in an odd way, as a chance to finally collaborate with Joe. By spending time with the countless drafts and the characters he had created, I could better understand how he approached his craft," said Thompson. With the help of original composer Charles Strouse and original lyricist Stephen Schwartz, Thompson and director Rob Ruggiero were set to create a new story that remains relevant to today's audiences.

"Rags" is about a Jewish immigrant mother, Rebecca, and her child, David, trying to start a

new life in early 20th century America. Unlike the original version's many interconnected plots, Ruggiero wanted the story to be more grounded - to make the mother's journey the main focus of the story. "Goodspeed audiences will experience this new version of 'Rags' through a more intimate and personal lens, exposing a powerful story of the American immigrant experience," said Ruggiero. Notably, this production of "Rags" allowed Strouse and Schwartz to perfect their vision for the music; they use much of the original score but were able to repurpose some of the material and even write a few new songs. Thompson believes this musical truly celebrates the contributions of our generation and those before us - the melting pot of different people who helped build up this country. "[In] the years since Joe wrote his initial treatment, the story has become even more relevant, more important and, in many ways, more needed. There isn't a day that passes we don't read another headline about an immigrant family coming to America, hoping to find a better life," said Thompson.

"Rags" is currently running through Dec. 10 at The Goodspeed in East Haddam. For tickets, call (860) 873-8668 or go online at www.goodspeed.org.

Celebrate CBSRZ's 10th Anniversary Season

Congregation Beth Shalom Rodfe Zedek (CBSRZ) in Chester has announced its upcoming 2018 10th anniversary season. Through a decade of presenting artists across a broad spectrum of music from classical, folk and jazz to a cappella, CBSRZ has become known as a vibrant and significant cultural center for the community. This 10th anniversary season, CBSRZ is changing it up just a little to present even more entertainment.

On Saturday, Jan. 27, at 8 p.m., CBSRZ will feature Comedy Tonight! Something familiar, something peculiar as CBSRZ turns into a NY comedy club featuring Alexandra McHale and Johnny Lampert, veterans of Comedy Central, network TV and the NYC comedy club circuit. This is for an 18 and older audience.

Back by popular demand the premier a cappella group, the Maccabeats, bring their inspirational and infectious brand of entertainment to CBSRZ on Sunday, March 11, at 4 p.m.

The Lonely Heartstring Band will play on Sunday, April 15, at 4 p.m. This imaginative and dynamic new force on the national bluegrass scene is on the rise with their recent IBMA Momentum Award and their debut album on Rounder Records.



The Maccabeats are coming to CBSRZ on March 11, at 4 p.m.

On Sunday, June 14, at 5 p.m., the annual tradition, CBSRZ community picnic with the music of local artists (free concert with artists to be announced).

For more information visit www.cbsrz.org/engage/events/ or call the CBSRZ office at (860) 526-8920. Follow Music & More on

Facebook, [facebook.com/music.more.cbsrz](https://www.facebook.com/music.more.cbsrz).

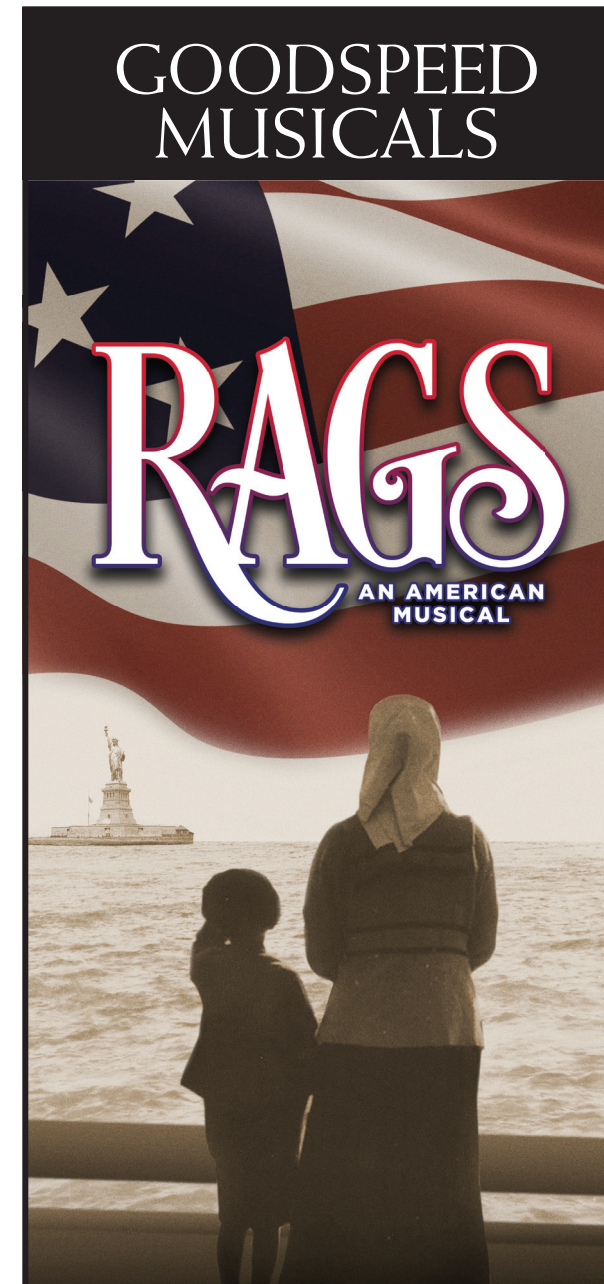
SHORELINE ARTISTS FEATURED

Congregation Beth Shalom Rodfe Zedek's upcoming exhibit will feature two celebrated shoreline artists Ashby Carlisle, of Old Lyme, and Rick Silberberg, of Ivoryton, now through January, 2018. The opening reception will be Sunday, Nov. 12, from 3-5 p.m. Both artists will be on hand to discuss their work and answer questions and will make a generous donation for all work sold. The exhibit is open Monday through Friday, 10 a.m. - 3 p.m. The reception is free and open to the public.

Ashby Carlisle creates sculptural landscapes with an impressionist flair.

Rick Silberberg's landscape paintings have been described as both peaceful and disquieting.

For more information visit www.cbsrz.org/engage/events



GOODSPEED MUSICALS

RAGS
AN AMERICAN MUSICAL

Oct 6 - Dec 10

Welcome to the new world! Fresh from Ellis Island, a young Jewish mother and her son search for a sense of home as the 20th century beckons. The streets of Manhattan's Lower East Side may not be paved with gold, but they echo with the music of opportunity, optimism and hope. A ravishing score by the songwriters of *Wicked* and *Annie* colors a sweeping saga of America's immigrant past. Celebrate our rich roots in Goodspeed's new adaptation of a neglected masterpiece of the musical theatre.

860.873.8668
goodspeed.org

The Goodspeed • East Haddam, CT
Only 40 minutes from New Haven

EVERSOURCE UNITED



a taste of honey

Jewish Learning at its Sweetest!

Saturday, Nov. 18
7 p.m.

Congregation Mishkan Israel
785 Ridge Road, Hamden

This year's evening of Jewish learning features the theme "Community: What is a Community and What Makes a Community Jewish?"

Students, Seniors & JCC Members \$12
Community \$18
FREE to Hebrew School Teachers

Made possible by the Dr. Brigitte Prusoff Fund for the Taste of Honey Program through the Jewish Foundation of Greater New Haven.



Register now at jccnh.org/rsvp



Italian Artist Had Confronted Anti-Semitism

There are always many opportunities to appreciate Jewish artists. The current exhibition Modigliani Unmasked in the Jewish Museum in New York City features works from the celebrated artist Amedeo Modigliani, an Italian Jew, who arrived in Paris in 1906, when the city was still roiling with anti-Semitism after the long-running tumult of the Dreyfus Affair and the influx of foreign émigrés.

As Modigliani himself said: "It is your duty in life to save your dream." The exhibition shows that Modigliani's art cannot be fully understood without acknowledging the ways the artist responded to the social realities that he confronted in the unprecedented artistic melting pot of Paris. It reminds us that today, almost 100 years later, the problem of anti-Semitism is not solved.

As is the story with so many immigrant populations, those Soviet Jews who came to United States as children, or were born here to immigrants, are now grown and very well acculturated. But many came as adults, imprisoned by a language barrier, and were never completely acculturated. This is why the New American Acculturation Program offers many educational programs for our Russian-speaking community, including information about interesting community events, transportation assistance, preparation for citizenship tests and organizing trips to historical places and museums across the United States.

Thanks to the local Jewish organizations, synagogues and the Lina Adult Center in Hamden, the Russian-speaking community had an opportunity to celebrate and properly observe the Jewish holidays. Special thanks go to Rabbi Levitin and his family for providing free services and food in different locations. Seniors without transportation were also able to walk to and enjoy services with their friends.

Contact Yelena Gerovich at (203) 387-2424 x321 or ygerovich@jewishnewhaven.org for more information.

play | experiment | explore | examine | learn



- Play-based curriculum
- Specialties in music, library & swim
- Powered by Jewish values

yeladim
early learning center
JCC OF GREATER NEW HAVEN

ENROLLING NOW!

jccnh.org/yeladim Lynn Bullard, lynnb@jccnh.org | (203) 387-2424 x278

Welcome to America

Итальянский художник и антисемитизм в Париже на рубеже веков



Еврейский музей в Нью-Йорке открыл выставку ранних работ Амедео Модильяни.

В экспозицию под названием Modigliani Unmasked вошли ранние работы итальянского художника еврейского происхождения Амедео Модильяни.

Город еще не оправился от «дела Дрейфуса», но уроженец итальянского города Ливорно, где издавна селились евреи, бежавшие от испанской инквизиции и прочих преследований, не собирався

в Париже ассимилироваться (хотя с его родившейся во Франции матерью, свободным владением французским и лицом то ли итальянца, то ли француза мог бы сойти за «своего»).

Он хотел быть другим: «Модильяни, художник и еврей» - так он представлялся незнакомцам. «Цель и долг нашей жизни -спасти и осуществить свою мечту», сказал он однажды.

Выставка показывает, что искусство Модильяни невозможно понять полностью, не осознав как художник отреагировал на социальные реалии, с которыми он столкнулся в беспрецедентном художественном плавильном котле Парижа .

Выставка напоминает нам, что сегодня, почти 100 лет спустя, проблема антисемитизма не решена.

Как и многие иммигранты из разных стран, те советские евреи, которые приехали в Соединенные Штаты детьми или родились здесь - хорошо адаптировались.

Но многие приехали взрослыми и языковой барьер и культурные различия помешали им полностью адаптироваться. Вот почему мы предлагаем им образовательные программы на русском языке.

Благодаря местным еврейским организациям, синагогам, Lina Adult Center, русскоязычная община имела возможность отпраздновать еврейские праздники.

Особая благодарность рабаю Левитину и его семье за организацию праздничных церемоний.

Пожилые люди смогли праздновать и общаться со своими друзьями. Большое всем спасибо и самого наилучшего в новом году.

С вопросами и предложениями обращайтесь к координатору культурно-образовательных программ Елене Герович по тел.

(203) 387-2424 доб.321 ygerovich@jewishnewhaven.org



2017 Bagel Run a huge success!

Close to 400 runners participated in the JCC of Greater New Haven's seventh annual Murray Lender 5K Bagel Run on Sept. 17, making it the largest race yet. Next year, the race will be held on Sunday, Sept. 16, 2018.



Kever Avot



Marvin Cohen, who was on the 1977 committee to create the memorial, shakes hands with Federation CEO Judy Alperin.



On Sept. 24, the community gathered at the New Haven Holocaust Memorial to remember those lost in the Shoah at Kever Avot, a moving ceremony held annually during the Days of Awe. This year marked the 40th anniversary of the Holocaust Memorial. In the last issue's Kever Avot story, Fay Sheppard's name was inadvertently omitted as a person who played a crucial role in the creation and care of the New Haven Holocaust Memorial, which was the first such Holocaust memorial built on public land in the United States when it was dedicated in 1977. A child of Holocaust survivors, Sheppard, of West Haven, served as a co-director of the local Holocaust commemoration committee for three decades and has also chaired the annual state commemoration program. Photos used with permission from The New Haven Independent. See complete story at www.newhavenindependent.org/index.php/archives/entry/holocaust_event_/.

Jewish Coalition for Literacy



More than 100 people attended the Jewish Coalition for Literacy's Orientation Program on Sept. 26 at the Woodbridge Club. The program offers volunteers a unique, custom-built opportunity to help the community and transform the life of a child. For more information, contact Brenda Brenner at bbrenner@jewishnewhaven.org or (203) 387-2424, x308.

Providing a warm, caring and inclusive Brit Milah experience

Ronald Buckman, MD, Mohel

Over 30 years of experience doing circumcisions.
Board Certified, Brit Kodesh graduate.
Serving Connecticut, Massachusetts and internationally.

860-646-0649 • www.CTmohel.com

Online and On Main Street



Some banks are closing branches in favor of online banking. Not Essex Savings Bank. Instead, we have added locations and expanded services – including online and mobile banking – to better meet your financial needs. As a community bank, we are here to serve you in the manner that works best for you. Stop by one of our conveniently located branches or visit us at essexsavings.com to see how we can meet your banking needs online and in person!



ESSEX SAVINGS BANK
Service & Trust Since 1851

Essex, 35 Plains Road, 860-767-2573 • Essex, 9 Main Street, 860-767-8238
Chester, 203 Middlesex Avenue, 860-526-0000 • Madison, 99 Durham Road, 203-318-8611
Old Saybrook, 155 Main Street, 860-388-3543 • Old Lyme, 101 Halls Road, 860-434-1646

Toll-Free: 877-377-3922 • www.essexsavings.com

Member FDIC Equal Housing Lender

Banners (continued from page 17)

raphy, which was designed by Eliyahu Koren for his Tanach (bible) edition. Later, it would be used again by Tartakover to make the logo for Peace Now. The poster was created in the context of the peace talks between Israel and Egypt, the first peace-talks ever between Israel and an Arab state. The age-old yearning for peace was reflected in the posters only after the Yom Kippur War. It is possible that peacemaking seem so unattainable, resulting in the focus of building, settling, and planting the land, which also reflected the need of the hour.



40 Israeli Independence Day, 1988
Eliezer Weishoff
The logo of Israel's 40 Independence Day, a stylish menorah stamped on the number 40, is positioned as the center piece of a bright and colorful flower which has 12 petals.



50 Israeli Independence Day, 1998
Danny Kadosh
Originally representing Middle-Eastern and Northern-African traditions, the Hamsa (hand) became a symbol for multiculturalism in Israel. In this poster it features different textures, perhaps reflecting the diverse cultural traditions which make the Israeli society. While instilling

a sense of unity and homogeneity was critical in the early days, the Israeli society became increasingly comfortable with reflecting cultural diversity. The dove can be interpreted as a yearning for peace - not between Israel and its neighbors as much as between the state and its citizens, or the different facets of society: left and right, secular and religious, mizrahi and ashkenazi.



60 Israeli Independence Day, 2008
Hayyimi Kivkovich
With "children of Israel" as the theme for the 60 celebrations, this poster presents six children, each flying a kite decorated with the menorah, Israel's national symbol. The tails mimic the 60 jubilee logo, which is also present at the middle of the poster,

in blue. Images of children have been used in past posters as well as in this one as a symbol for the future of Israel. The doves, a symbol for peace, convey a unifying message connecting heaven and earth, people and state, the present and the future.

VOLUNTEERS NEEDED!

Help us plan Israel's 70th Independence Day Events.
Contact Eliana Sugarman at elianas@jccnh.org




Palestinian unity deal could allow Hamas leader to become PA president

By Daniel Siryoti/Israel Hayom
JNS.org



The Gaza-controlling Hamas terror group's recent decision to sign a unity deal with the Palestinian Authority's (PA) ruling Fatah party may have been

motivated by more than just a desire to reconcile after years of bitter rivalry.

A cunning plan to pave the way for senior Hamas leader Khaled Mashaal to win the PA presidency could be the true aim of the terrorist organization's willingness to compromise.

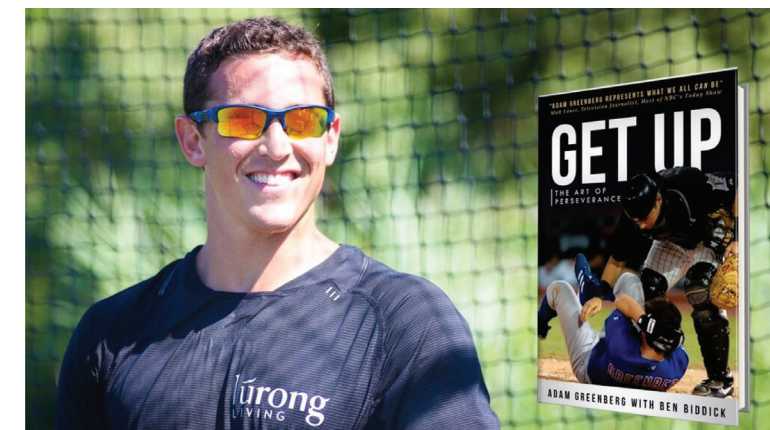
This new information was confirmed by senior Palestinian officials as well as Egyptian intelligence officials involved in mediation between the rival factions. These sources told Israel Hayom that one of Hamas's principal aims in the agreement was to replace aging PA President Mahmoud Abbas, 82, with Mashaal, 61, the former head of Hamas's "political bureau."

Mashaal was Hamas's political chief for almost two decades and is still considered the strongest member of the terror group. Senior Palestinian officials told Israel Hayom that despite recently resigning as Hamas's political leader and being replaced by Ismail Haniyeh, Mashaal has made no effort to disguise his ambition to clinch the coveted PA presidency.

In private conversations, Mashaal reportedly told his companions he would back significant reforms to the Hamas charter to allow the organization to join Palestine Liberation Organization (PLO) institutions—a move that would allow a Hamas candidate to compete in PA presidential elections.

According to the Palestinian and Egyptian officials, one of the main articles in the Palestinian reconciliation agreement deals with the option for significant reforms to both the PLO and Hamas—namely, measures allowing Hamas to join the PLO. This move would pave the way for Mashaal to declare his candidacy.

The Art of Perseverance



Former Chicago Cubs baseball player Adam Greenberg, who grew up in Guilford, spoke on Oct. 1 at the JCC Fitness Center about the art of perseverance.



Greenberg's life was changed when, in his major league debut, he was struck in the head by a pitch and suffered a compound skull fracture.

All Consultations Are Complimentary!
Please call so we can help you get the smile you deserve.



BRUSH & FLOSS
DENTAL CENTER
General, Cosmetic & Implant Dentistry

Jeffrey C. Hoos, D.M.D.
Johna D. Zitnay, D.M.D.
Gemma G. Kwolek, D.D.S.
Julia C. Latham, D.D.S.



NEW PATIENTS:
Complimentary in office bleaching treatment (\$450 Value)

4949 North Main Street • Stratford, CT 06614 • (203) 378-9500 • Fax: (203) 386-9057 • bettersmile.com

A CLASSIC AMERICAN COMING-OF-AGE STORY

THE CHOSEN

ADAPTED BY
AARON POSNER & CHAIM POTOK
FROM THE NOVEL BY
CHAIM POTOK
DIRECTED BY
GORDON EDELSTEIN

LWT 17/18
LONG WHARF THEATRE

NOV 22 - DEC 17
GROUP THEATER NIGHT
SPONSORED BY THE JEWISH FEDERATION & FOUNDATION OF GREATER NEW HAVEN
Dec. 16, 8-10 p.m.
Section D (Center Seating) \$58.75 each
Section B (Mid Side Seating) \$45.00 each
Use code: JFGNH

BOX OFFICE: 203.787.4282
LONGWHARF.ORG

NON-PROFIT
STANDARD MAIL
U.S. POSTAGE
PAID
Permit No. 2134
New Haven, CT

Why leave it all up to **LUCK?**



Jewish Federation
OF GREATER NEW HAVEN

(203) 387-2424 | 360 Amity Road, Woodbridge, CT

Federation fuels the Jewish community in ways you might not think of, from sending free PJ Library books to families worldwide to supporting Jewish camps, Birthright trips and more. Federation powers Jewish continuity and provides a safety net. The needs are great, perhaps greater than ever before. Each one of us can make a difference because *Everyone Counts!*

jewishnewhaven.org/give