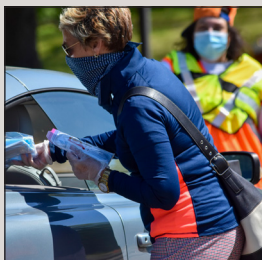


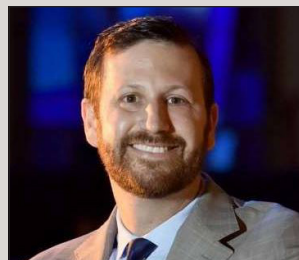
## Preparing for Reopening of Our State, Our Building and Our Lives

page 4-5



### MASKS FOR CT CONTINUES MASK DISTRIBUTION

Through a collaborative effort, 50,000 more masks were given out to those in need at Yale's West Campus **PAGE 12**



### 'KEEPING THE LIGHT BURNING BRIGHT' WITH RABBI IMMERMANN

Local rabbi offers inspiration to help "light up" our connections and communities **PAGE 14**



### FAMILY SPIRIT AND STRONG JEWISH VALUES AT ABEL

The family business' fourth-generation owner shares Abel Caterers' story in the community **PAGE 11**



FROM THE DESK OF  
**JUDY ALPERIN**  
CHIEF EXECUTIVE OFFICER | jalperin@jewishnewhaven.org



## Tell Us What is Important to You

Springtime brings renewal and the re-awakening of dormant plants and animals that have hibernated through the long winter. Here in Connecticut, after a somewhat mild winter, spring felt more like a continuation of winter compounded by the isolation caused by the COVID-19 pandemic.

While we necessarily heeded the governor's call to shelter in place and shifted our Jewish community to a fully online virtual reality, the regular cycle of events and programs were upended. It is now time to move forward.

The pandemic has illuminated—and in many cases exacerbated—issues, concerns and needs in our Jewish community. Prior to COVID, our community embarked on a strategic planning process to better understand our priorities in order to help drive the changes necessary to create a sustainable future for our Jewish community to thrive. Those plans were halted mid-March.

Following several focus groups and one-on-one interviews led by Melior Group

of Philadelphia, we are launching an online community survey designed to understand your thoughts, feelings, wants and desires for our Jewish community. We are pleased that the survey will be online for most of the month of June, giving ample opportunity for all to participate. We understand that some of us may require a little extra help to complete the survey; we have plans to help. Since we cannot visit in person, our expert staff and volunteers who have been reaching out to households throughout the pandemic will be offering special assistance.

In addition to our helping those who need help to complete the survey, we are asking for your help. Not only is it highly important that you take 15 minutes to share your opinions, but we are also tasking you with a critical assignment to share the survey link to your contacts. While we have a robust database of 10,000 households, we know we have not captured everyone. With your help, we will get the most

accurate understanding of what is most important to the Greater New Haven Jewish community.

This process would not be possible without the investment of resources from the Seedlings Foundation coupled with the dedicated leadership of Chairman Dr. Norman Ravski and the excellent professional support of Senior Consultant Robyn Teplitzky. I want to offer our deepest appreciation to them and to Melior Group and David Kaplan of Panoramic Strategies, who will guide Jewish Federation leadership in the important process that will activate the data gathered during phase 1.

Thank you for answering the call and lending your voice. Everyone counts. Everyone matters. With your help, we will chart the course to a strong and vibrant future for our community. With my best for your strength and good health,

*Judy*

## SHALOM NEW HAVEN

SHALOM NEW HAVEN is published six times per year and delivered free of charge to the Greater New Haven Jewish community by the Jewish Federation of Greater New Haven.

**COPY DEADLINES**  
Copy deadlines for the upcoming Shalom New Haven issues are:  
• June 18 for July online issue  
• July 16 for August online issue  
• July 31 for September/October issue  
• Sept. 30 for November/December issue  
• Nov. 30 for January/February 2021 issue  
• Jan. 29 for March/April issue  
• Mar. 29 for May/June issue  
• May 29 for July/August issue

**SUBMISSIONS**  
To submit an article or photo, please email shalomnh@jewishnewhaven.org. Please include your contact information when submitting.

Space is limited; submission does not guarantee publication. All articles are subject to approval by the editorial board.

**SHALOM NEW HAVEN STAFF**  
Nurit Kohl  
Director of Marketing & Communications  
  
Ariana Fine  
Shalom New Haven Editor  
  
Wendy Bowes  
Senior Graphic Designer  
  
George Hauer  
Advertising Sales Manager

**EDITORIAL BOARD**  
Chesky Holtzberg: Chair  
Chava Light  
Mark Oppenheimer  
Cindy Papish Gerber

**LEADERSHIP**  
Dr. Jeffrey Hoos  
President

Judith Alperin  
Chief Executive Officer

Scott Cohen  
JCC Executive Director

Lisa Stanger, Esq.  
Foundation Executive Director

Jewish Federation of Greater New Haven  
360 Amity Road, Woodbridge, CT 06525  
(203) 387-2424  
jfgnh@jewishnewhaven.org  
jewishnewhaven.org/SNH



## The Community Foundation Awards Grant to Jewish Federation

### The COMMUNITY Foundation for Greater New Haven

The Jewish Federation of Greater New Haven is grateful to be awarded a 3-year grant in the cumulative amount of \$95,000 to provide general operating support for community-wide programming that helps people in need in the Greater New Haven area. The funds will also be used to nurture and sustain programs that enrich the local community (excluding grantmaking support).

We are proud to have been recognized by this grant award for the work we have done in our community to provide basic needs to individuals, strengthen early childhood and school-age programming with special attention to low-income families, boost access to JCC services for under-

served populations through the development of a transportation program, increase services to persons of all ages with disabilities and special needs, and implement additional security measures for our facilities.

The Community Foundation for Greater New Haven's 2020 responsive grant program has awarded \$2.98 million to local nonprofit organizations working for the benefit of the community. The 36 local organizations receiving the awards provide a broad range of services to Greater New Haven residents including emergency food and shelter, mental and physical health care, early childhood and youth programs, education and the arts.

For more information on the 2020 awardees and the grant program, visit [cfgnh.org/articles/2020-responsive-grant-awards](http://cfgnh.org/articles/2020-responsive-grant-awards).

*Shabbat Shalom*  
*Pise Sipe*

**Stop by These Big Y Locations:**  
830 Boston Post Rd., Guilford  
22 Spencer Plain Rd., Old Saybrook  
772 North Main St., West Hartford  
For All of Your Shabbat Needs!

**Shabbat Shalom!**

Visit [bigy.com](http://bigy.com)

## Donate to

## The COVID-19 Response/Maimonides Fund because Kol Yisrael Arevim Zeh La'zeh "All Jews are responsible one for another"

The Jewish Federation and the Jewish Foundation of Greater New Haven have launched the COVID-19 Response/Maimonides Fund, seeding it with \$108,000 to support the immediate needs of those most vulnerable. As of June 8, the fund has distributed \$186,000 in emergency grants—and another \$51,600 pending—to provide for critical human needs to synagogues, Jewish Family Service (food assistance and social services), JCARR, the Towers at Tower Lane (food assistance) and the Jewish Federation.

Your support of this fund will enable us to make grants to our Jewish agencies and synagogues to help provide services related to food insecurity, unemployment and mental health support.

We are facing unprecedented times. United as one Jewish community, we will meet the rising needs in our community and overcome the great challenge before us.

[jewishnewhaven.org/covid](http://jewishnewhaven.org/covid)



## Jewish Community SURVEY

**Complete the survey and be a part of NEW BEGINNINGS.**

**Help determine the future of our Jewish community. Anonymous and confidential.**

The survey must be completed in one sitting, and takes about 15 minutes.

**A \$100 VISA gift card will be raffled to all participants.**

Jewish Federation OF GREATER NEW HAVEN  
Questions about accessing the survey? Please email: [replitzky@jewishnewhaven.org](mailto:replitzky@jewishnewhaven.org)

[jewishnewhaven.org/survey](http://jewishnewhaven.org/survey)

THE MELIOR GROUP  
Information. Intelligence. Insights.

# Back to Programming at the JCC

Nearly 12 weeks after the Jewish Federation, Foundation and JCC of Greater New Haven closed on-site operations due to the spread of COVID-19, the doors at the Beckerman Lender Jewish Community Building building are opened twice a day to allow staff in. The guidelines are strict. Employees receive and are required to sign the new health and safety guidelines; they can only enter at certain times and are announced on a schedule. Judy Alperin, the Jewish Federation of Greater New Haven's CEO, oversees the schedule to assure that there are no more than a few people assigned to work in a certain area of the building at the same time. Employees are instructed to record their temperatures before leaving for work, and are tested before entering the building. Masks are required at all times.

"It's a new reality we all need to accept—it's the new normal," says Alperin. "The health and safety of our community and staff are paramount as we carefully approach reopening our building and our physical operations."

However, the Jewish Federation and the JCC have not been dormant during the past weeks. Hundreds of programs, live classes and pre-recorded videos have been offered to the community during the stay-at-home orders.

"We will continue to offer these online programs for as long as it serves a need for our community," says Alperin. "But there is nothing we want more than

seeing our JCC members and the Greater New Haven community back in the building."

Shannon Lane, a JCC board member and a mother of young children who participate in the JCC Camp, the Beverly Levy Early Learning program and the JCC after-school program, is cautiously optimistic.

"Before the pandemic, the JCC was the center of our family life. I would bring my daughter to Bev-Lev and usually stay and telecommute from Café 360 or in the Cube [JCC member-only quiet office space]. On many days, I would take a break to work out, and then pick up the kids from their enrichment activities, afterschool or JCC swim team. We truly miss our friends in the community, and the JCC teachers and staff. I understand things are going to look and feel different when we return, but I know first-hand that the JCC is taking every precaution to keep those who enter healthy and safe."

When state guidelines for phased reopening started to become available in May, Jewish Federation of Greater New Haven President Dr. Jeffrey Hoos and JCC President Jeffrey Sklarz initiated a special taskforce to guide the new protocols and procedures that would need to be in place for a safe and phased reopening. The task force is comprised of subcommittees; each task force subcommittee has carefully analyzed the different operational areas of the Jewish Federation and the JCC.

"Proudly, our community has some of the best minds

in their fields. That, coupled with the fact that they are so dedicated and willing to help, made this task force a true power house," said Dr. Hoos. The task force, which includes over 20 staff members and volunteers, has spent hundreds of hours writing the guidelines and protocols for all key areas. They implemented state DECD, CDC, OSHA and Office of Early Childhood guidelines, as well as best practices from the American Camping Association, Jewish Federations of North America, JCC Association and sister communities.

The first area to open for public use will be the JCC Day Camps. "Our beautiful wooded campus offers the perfect setting to provide our kids with a happy summer," says JCC of Greater New Haven Executive Director Scott Cohen. Camp will open on June 22. Campers will stay with their group of 10 during their camp day. Even though we cannot offer busing or field trips, camp will offer plenty of recreation, fun and fresh air with swimming in the completely resurfaced swimming pool.

The opening of the JCC day camps will be followed closely with phased re-openings of the Marcia & Stanley F. Reiter Swimming Pool and the Fitness Center.

"We continue to use our mantra [from the days of overcoming the fire in Dec. 2016] of making lemonade from lemons; we will once again overcome any obstacles before us to bounce back stronger than ever," concludes Alperin.

## Keeping our community healthy and safe with these newly purchased amenities:



**TOUCHLESS THERMOMETERS**



**PROTECTIVE ENCLOSURES FOR RECEPTION AREAS**



**FLOOR STICKERS FACILITATING SAFE DISTANCING**

### PLUS...

- Upgraded air filters for HVAC systems
- Touchless faucets
- Door locks indicating restroom occupancy, allowing us to transform large restrooms to a single-use restroom
- Signage facilitating one-directional walking

# Reopening Updates from Our Committees

## General Operations, Facilities and Security *Evan Wyner, Chair*

We support the operational aspects of all programs and activities, especially as it pertains to cleaning and sanitation protocols, safe distancing, building access, and flow inside the building. In the initial phases, only JCC members will be permitted in the building by appointment (visitors and guests will be allowed later); they will be logged after their temperature has been checked. A new smartphone app is in development to allow members to more easily reserve a spot for their favorite activity.



## JCC Day Camps *Emily Banach, Chair*

We are very excited that the JCC Day Camps will be open on June 22. Much consideration went into structuring camp for a safe and enjoyable experience for our campers. Camp will be available in two 4-week sessions (June 22-July 17 and July 20-August 14). There will be no field trips, transportation or before/after care. To minimize exposure, bunks will be limited to 10 participants, and will be kept separated from the other campers throughout the day and throughout the session. Counselors will be required to wear masks.

## Beverly Levy Early Learning Center *Shannon Lane, Chair*

While considering the ongoing and fluid pandemic unknowns, the Beverly Levy ELC task force made the very difficult and painful decision that, for the safety of our children and teachers, we will remain closed for the summer. Since safety is and always has been our number one priority, we will be spending the summer making necessary changes to the classrooms and implementing protocols that include staff training that will ensure the children's and teachers' safety when we do reopen in September.

## Health and Wellness *Bob Felice, Chair*

Understanding that health and wellness are some of the main attractions for our JCC membership, we have been working on creative ways to allow safe return to on-site operation. We plan to allow JCC members in the fitness center by reservation. This will allow us to maintain safe distancing, and enable deep cleaning and sanitation between sessions. We aim to begin in-person cycling classes, and personal training shortly thereafter. We will keep many of our classes virtual and are looking into maintaining the virtual option even for in-person classes. We are also going to use our beautiful campus for more outdoor, safely spaced classes.

## Sports and Recreation *Scott Hurwitz, Chair*

We are looking forward to opening the Marcia & Stanley F. Reiter swimming pool for members by reservation on or about June 29. While activities in the gymnasium are not planned for the initial phases, we do plan to offer programs, games and fun for children and adults outdoors throughout the summer. We are also planning to offer swim lessons that can come directly to your pool.

## Medical *Dr. Stephanie Green, Chair*

We are working closely with the human resources department to develop the employee health protection policy and the mask policy for staff and members. We are also providing essential medical advice for all departments and subcommittees to ensure the highest standard of health and hygiene practices.

## Legal *Jeffrey Sklarz, Esq, Chair*

Careful consideration is given toward all new policies and protocols that will be implemented affecting members and staff. This includes preparation of necessary waivers and documentation to create a safe environment.



# Coming Back to JCC Day Camp

It is with tremendous excitement—and only after careful consideration—that we announce the opening of the JCC Day Camps. Camp will run Monday, June 22, through Friday, August 14. We are committed, now more than ever, to the safety and health of our community, campers and staff. As such, we have adjusted our already rigorous safety procedures and introduced new protocols to comply with the CDC and Office of Early Childhood (OEC) guidelines. Camp will look and feel different this year; our dedicated staff is relentlessly committed to creating a new normal that guarantees a fun and enjoyable experience for all campers.

The following measures are being implemented to protect the health and safety of both our campers and staff. Camp will be conducted in two 4-week sessions: June 22 through July 17 and July 20 through August 14.

Campers will remain in consistent groups of no more than 10 people throughout each day and session.

There will be no mixing of campers or counselors between groups whatsoever. Groups will social distance from other groups.

All staff will be required to wear masks.

Camp registration is now open and will occur on a first-come, first-served basis until we reach the safety quota limit. Despite some changes, camp will remain a place where kids can be kids. JCC Day Camps will offer a variety of exciting programs and activities for 4-year olds and up to children in grade nine, including our Counselor in Training (CIT) program for 14-15-year olds.

Despite these unprecedented times, our mission remains intact: to preserve and protect our rituals, to promote togetherness, and, finally, to honor the magic of summer while creating memories that will last a lifetime.

For more information, visit [jccnh.org/camp](http://jccnh.org/camp).

# Wrapping up the 2020 Annual Campaign: PLEASE STEP UP NOW!

Several weeks into the COVID-19 pandemic, we are all still figuring out how to go about our days. Changed and perhaps still changing routines, emotions and/or finances have complicated life. For those of us charged with spearheading funding for the Jewish community, these challenges persist as we work to close the 2020 Annual Campaign. We too have had to figure out new ways to complete our task.

We have a small but dedicated group of staff and volunteers who have taken on the enormous task of connecting with many donors—old and new—to raise the funds we need to keep Jewish life alive locally, in Israel and worldwide. Due to this hard-working group and many generous donors, we have recently passed the \$2.2 million mark for this year's Annual Campaign. This is an incredible achievement given the current circumstances, but we are still about \$300,000 away from our goal of \$2.5 million.

### What makes raising dollars so difficult right now?

- Our preferred means of connecting in-person to have Jewish conversations is difficult, if not impossible, given the need for social distancing.
- We are unable to hold our very productive Super Sunday event or other in-person call-a-thons to wrap up the campaign.
- Few answer phone calls from numbers they do not recognize. That being said, when people do answer, we have extraordinary conversations!

- Many are experiencing financial hardship and are unable to give as they normally would.

Our message today is simple. We need you step up NOW so that we can successfully close the 2020 campaign. Our agencies and programs are counting on us. We wish we could speak with all of you in person; we are trying, but with limited time and resources and constrained means of being in touch, we need your help more than ever. **Don't wait for us to call. Take action in one of the following ways.**



- If you know your campaign liaison, call them to have your Jewish conversation and to make your gift.
- Call or email Amy Holtz at (610) 737-1122 or aholtz@jewishnewhaven.org to make your gift.
- Go to [jewishnewhaven.org](http://jewishnewhaven.org), click on "Give" in the toolbar at the top of the page and then select "Annual Campaign." Your gift will be credited directly to your account.

**Please don't put down your Shalom New Haven and say you'll do this later.** We are requesting that you make your gift now because we need these funds now to help our Jewish community make it through this pandemic. We may think that "someone else" will step up and make a gift, or that we'll make our own gift "later", or that our gift won't be missed. Let us assure you that your gift is greatly missed—we have a \$300,000 shortfall to show it. We are a kehilla, a community, and we each have a personal responsibility to step up and help address our community's current pressing needs. Your gift of any amount will help. Please make your gift NOW.

Dr. Jeffrey Hoos, President, Jewish Federation  
Dr. Dena Schulman-Green, Campaign Chair

# In Honor of George Floyd

Last Thursday, May 28, just before the Jewish holiday of Shavuot—the holiday celebrating the receiving of the Torah—the Jewish Community Relations Council (JCRC) of the Jewish Federation of Greater New Haven shared an open letter with our friends and leaders of the African American community of the Greater New Haven area, and with other faith and community leaders.

In that letter, we expressed our outrage of the killing of Mr. George Floyd, a subdued, handcuffed African American man pleading for help, who was suffocated by former Minneapolis police officers.

One of the first things that the Torah teaches us is that every person is born in the image of God. Our hearts break for Mr. Floyd's family and friends. We also feel devastated for our friends and neighbors in the African American community. We mourn together for this horrible death. Your pain is our pain.

The murders of George Floyd this past week, Breonna Taylor in March and Ahmaud Arbery in February remind us that until we recognize that the image of God is implanted within every human being and how each person is deserving of dignity and respect, our world will remain broken.

We extend our hands as allies in support of the Black community. The struggle for justice and anti-discrimination should be a fight for all; it is a struggle over the foundational human commitments as citizens and as a society. We commit to bringing together our communities to combat racism through conversation, advocacy and learning. We stand as allies with all of our local faith and ethnic communities. We encourage efforts by local leadership and law enforcement to implement education, training and policies to advance these ideals. We know that we are each responsible for working to dismantle the systems and structures of racism that exist both locally here and across the United States of America.

# Jumpstart Your Career and Own Your Future

A 3-week online leadership experience, July 6-24, for Jewish students and recent graduates, 20-25, built for career development, networking and making a difference in the community.



The Jewish community needs visionary, dedicated leaders as the engine of Jewish growth, vitality and innovation. Recognizing that millennials and Gen Z connect to Jewish life differently than their parents and grandparents, now is the time for an entire generation to connect and engage. Fellows earn credits for sessions, volunteering and more. Cohorts develop projects to address a local challenge caused by the global health pandemic. Participants can earn a certificate of completion and a \$500 stipend.

The curriculum covers professional development, service and advocacy, and the global Jewish community.

**For more information, visit [jewishchangers.org](http://jewishchangers.org)**

Coronavirus has changed the landscape of summer 2020. Changers creates an opportunity to transform #bummersummer into #bestsummerever

## Thank You to Our Proud CORPORATE SPONSORS

<p><b>ALL AMERICAN WASTE</b></p> <p>www.aawllc.com 19 Wheeler Street, New Haven, CT (800) 998-2985</p>	<p><b>STAR TIRES PLUS WHEELS</b></p> <p>• TIRES • WHEELS • AUTO REPAIR</p> <p>TWO LOCATIONS: 40 Boston Post Rd. West Haven 203-933-2886 888 Wethersfield Ave. Hartford 860-296-9799</p> <p>startires.com</p>	<p>TRAVELAND IS PROUD TO BE A SUPPORTER OF THE WOODBRIDGE JEWISH COMMUNITY CENTER</p> <p>CRUISE AND VACATION EXPERTS</p> <p>564 Racebrook RD Orange, CT</p> <p>YOUR LOCAL TRAVEL AGENCY</p>	<p><b>BARKER SPECIALTY</b></p> <p>800.227.5377   barkerspecialty.com</p> <p>OBSTETRICS, GYNECOLOGY &amp; MENOPAUSE PHYSICIANS, P.C.</p> <p>AN AFFILIATED PRACTICE OF Yale Medicine</p> <p>40 Temple Street Suite 7A New Haven, CT (203) 789-2011 obgynmenopause.com</p> <p>EXPAND YOUR BRAND</p>
<p><b>GREEN &amp; SKLARZ LLC</b></p> <p>GS-LAWFIRM.COM (203) 285-8545</p>	<p><b>Teplitzky &amp; Company P.C.</b></p> <p>Certified Public Accountants</p> <p>1 Bradley Road, Building 600 Woodbridge, CT 06525 (203) 387-0852 teplitzky.com</p>	<p><b>MARCUM</b></p> <p>ACCOUNTANTS • ADVISORS</p> <p>Marcum LLP 555 Long Wharf Drive New Haven, CT (203) 781-9788 marcumllp.com</p>	<p><b>To learn how to become a Corporate Sponsor,</b></p> <p>email Lindsay Barger @ <a href="mailto:lbarger@jewishnewhaven.org">lbarger@jewishnewhaven.org</a></p>

# JCC DAY CAMPS

Camp is opening June 22 & preparing for a fun & safe summer

**2020 CAMP SEASON**

Session 1: 6/22 - 7/17  
Session 2: 7/20 - 8/14

[jccnh.org/camp](http://jccnh.org/camp)

For more information, contact Camp Director, Debra Kirschner at [summercamp@jccnh.org](mailto:summercamp@jccnh.org) or (203) 387-2424 x253.

**JCC**  
OF GREATER NEW HAVEN

360 Amity Road Woodbridge, CT (203) 387-2424

## COVID-19 Fund, PLUS Annual Grants & Scholarships/2020

### COVID-19 FUND THE JEWISH FEDERATION AND JEWISH FOUNDATION OF GREATER NEW HAVEN COVID-19 RESPONSE/MAIMONIDES FUND

As of June 4, we have raised \$293,413 and we have distributed \$186,000 for critical human needs.

#### MONIES FROM THIS FUND HAVE BEEN DEPLOYED IN TWO WAYS:

1. Emergency grants to our Jewish agencies and synagogues to allow them to meet increased and immediate community needs such as food insecurity, unemployment, and mental health needs
2. To provide direct assistance to individuals, families, and households in need. To do this, the Fund has reached out to New Haven's rabbis to channel assistance, knowing they are often the trusted leaders that individuals in need turn to for support.

Grants were made to Jewish Family Service of Greater New Haven (for food assistance, mental health, and social services) to the Towers at Tower Lane (for food for residents in need, as well as for personal protective equipment), to the Jewish Federation of Greater New Haven (to assist community members in need), to JCARR (for special support for unemployed refugee families), and to synagogues to assist individuals and families in need of food, rent and utility monies, and other issues related to unemployment.

### GRANTS

To apply for any Jewish Foundation grant, go to [jewishnewhaven.org/grants](http://jewishnewhaven.org/grants) for online applications and descriptions.

#### FOR THE JEWISH ELDERLY

The Grants for the Jewish Elderly initiative has awarded \$130,000 in grants to Jewish Family Service (to support a geriatric social worker), the Towers (food for those in need), and Temple Beth Tikvah (Gerontologist run inter-generational out-reach program). Grants will be available again in the spring of 2021.

#### SECURITY GRANTS AVAILABLE FOR SYNAGOGUES, CAMPS AND DAY SCHOOL

These grants are made possible thanks to the generosity of the Arthur Eder Family Fund at the Jewish Foundation and are made in memory of Arthur and Yvette Eder. As of June 3, \$170,000 has already been awarded. We ask that you apply by Aug. 3, 2020.



Your first time camper may be eligible for up to \$1000 off Jewish Camp!



The Jewish Foundation's One Happy Camper program provides 1. Needs-blind incentive grants of up to \$1000 for first-time campers and 2. Needs-based aid for first time and returning campers to over 195 Jewish overnight camps.

To learn more or apply, please visit: [jewishnewhaven.org/one-happy-camper](http://jewishnewhaven.org/one-happy-camper)

### DEVELOPMENT

PROFESSIONAL DEVELOPMENT GRANTS FOR JEWISH EDUCATORS  
Due September 20.

### SCHOLARSHIPS

#### ISRAEL EXPERIENCE SCHOLARSHIPS

For 2020-2021 gap or academic year programs, applications are due by June 12, 2020. The Jewish Foundation Israel Experience Scholarship Program enables local Jewish students to have the opportunity to participate in an Israel experience to develop and enrich their Jewish education and reinforce their Jewish identity. The Jewish Foundation provides scholarships for both short-term (3-week program minimum) and long-term organized Israel educational programs. Greater New Haven youth ages 14-19 are eligible.

Go to [jewishnewhaven.org/scholarships](http://jewishnewhaven.org/scholarships) for more information, a list of qualifying programs and application requirements. This is a competitive process and, in most years, not all applicants will receive an award.

#### JEWISH OVERNIGHT CAMP GRANTS AND SCHOLARSHIPS

##### One Happy Camper

The Jewish Foundation offers needs-blind incentive grants for first-time campers as well as needs-based aid for first-time and returning campers.

Go to [jewishnewhaven.org/scholarships/one-happy-camper](http://jewishnewhaven.org/scholarships/one-happy-camper).

#### SYNAGOGUE SCHOOL SCHOLARSHIPS

Due October 19, 2020

## Masa Programs: A Year "On" in Israel



As colleges contemplate online classes and keeping their campuses closed in the 2020-21 school year, college-bound students are weighing their options. Some hesitate to give up their college experiences. Some are thinking of other ways to build up meaningful life experiences. This is where Masa comes into play.

The Masa program—which means “journey” in Hebrew—includes a gap year track in Israel that offers college-bound high school graduates the opportunity to acquire a global perspective. They gain a taste of independent living while having an incredible Israel experience.

Even during non-pandemic times, many North American universities recommend that students defer their formal education for a semester or a year before deciding what they want to study. In the Masa program in Israel, students can attain an informal education and discover their passions while volunteering, studying or interning. They can explore their interests or deepen their knowledge in a particular field. A gap year in Israel isn't a year off, it's a year on!

Masa, funded in part through your contributions to the Jewish Federation Annual Campaign, is a program of the Jewish Agency for Israel, our overseas partner in Israel. Masa Israel Journey's portfolio of 2-12 month programs in Israel for young people aged 18-30 includes programs for volunteer and community service, internship and career development, undergraduate and graduate academics at Israeli universities, Jewish studies, and gap years.

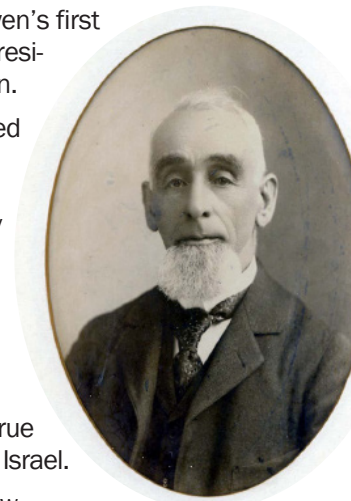
Visit [masaisrael.org](http://masaisrael.org) for more information.

## Zunder and the Kinder

With June holidays including Father's Day, we look back through the Jewish Historical Society's archives at a fatherly figure in New Haven's history who was an integral part of improving local children's lives.

In the nineteenth century, Meier Zunder, New Haven's first Jewish school board member and school board president, fought to make schools better for all children.

Meier Zunder was born in Bavaria in 1829 and fled to the US in the wake of the failed revolution of 1848. He came to New Haven in 1852, married his brother's widow and built his brother's grocery business into a large wholesale house called M. Zunder & Sons. He was a founder and later president of the Old Mechanics Bank.



In the Jewish community, he was a founder of the Horeb Lodge of B'nai B'rith and encouraged the founding of a local chapter of the United Order of True Sisters. For 25 years, he was treasurer of Mishkan Israel.

In 1868, he was elected as a Democrat to the New Haven Board of Education and served for 24 years. He became President of the Board of Education until he retired in 1892.

On the school board, he supported progressive policies, including equal education for blacks. He opposed altering of school district lines to segregate black from white children. Since large numbers of foreign-language speaking children were in the schools, Zunder felt that teachers who were bilingual should be hired. Zunder opposed both religious education and opening prayers in public schools. He was, in addition, instrumental in providing free schoolbooks to those children who could not afford to pay for books. Finally, Zunder believed that the curriculum should not be restricted to the “three Rs.” Under his influence, the curriculum was widened to include art, music and penmanship.

Zunder was responsible for the building of recreational playgrounds in school yards to be used by children during school hours for recess and physical education and for after school and summer programs.

Adapted from “Meier Zunder: New Haven's First Jewish School Board Member,” an article by Barry Herman in *Jew in New Haven*, Volume I edited by Jonathan Sarna, November 1978

## Local Fire Department Donates



Pictured above are members of Branford's Fire Department wearing masks whose fabric was donated by Benny Becker and his Norton Upholstery Company. Benny, a longtime member of Congregation Or Shalom, was approached by Rabbi Wainhaus on behalf of "Generation Two," a group of Holocaust survivors' children in the Greater New Haven area, for fabric which they turned into hundreds of masks. Our heroic firefighters, police, EMS and healthcare workers were the recipients of their Mitzvah.



ROBERT E. SHURE, INC.  
FUNERAL HOME

Dedicated to the Dignity and Respect of Tradition

543 George Street, New Haven, CT 06511

Robert E. Shure Founder      203-562-8244 shurefuneralhome.com      James M. Shure President

Porsche • Volvo • Mercedes • BMW

the Woodbridge  
AUTO BODY SHOP inc.



- American and Foreign Specialists -

Free Estimate • Frame Machine • Professional Insurance Help  
Loaner Car Available • Interstate Car Carrier Service

203.397.2909      36 LUCY STREET, WOODBRIDGE, CONNECTICUT 06525



## JCC'S SPORTS BANQUET

Oct. 18, 2020 | 10 a.m. | \$55 per person

Kosher Brunch will be served  
JCC of Greater New Haven  
360 Amity Road, Woodbridge

NOTE:  
NEW DATE!



## Honoring Allan Greenberg

"A good coach can change a game; a great coach can change a life."  
— John Wooden

Join us at our Sports Banquet to support our JCC and honor Allan for his 45 years of dedication to our community

RSVP: [jccnh.org/rsvp](http://jccnh.org/rsvp)

Sponsorships, table captains and tribute-book ads are available.

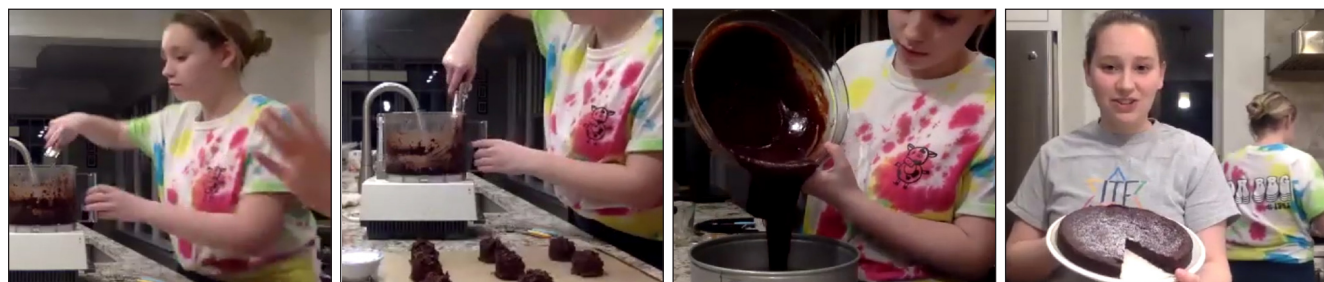
Contact: Lindsey Barger, (203) 387-2424 x276 by August 1, 2020 to be included.

# Updates from Women's Philanthropy

**How to raise money in the midst of a global pandemic? How to keep folks engaged while confronting a novel coronavirus? These are the struggles we are confronting now while trying to maintain our meaningful and philanthropic presence in our community.**

After taking a brief pause, the Women's Philanthropy Cabinet met and reinstated our fundraising efforts. We have a script, devised by our professional staff, to coach our volunteer solicitors. But our job was made so much easier thanks to the dedication of the aforementioned staff and the loving and caring phone calls made by them and their cadre of volunteers; they checked on our constituents, offering help and kindness. I believe the community feels that we care and are happy to help fulfill our mission of tikkun olam by contributing financial help. At the time of this writing, Women's Philanthropy has raised \$1,005,723. Yasher koach to all of the Women's Philanthropy volunteers and donors!

Remember, we are more than a fundraising organization. We are a community-building and outreach organization, known for our continuing education opportunities and social events.



In preparation for Passover, Women's Philanthropy hosted a series of online classes. Passover in Place, hosted by Lauren Hass, covered organizing and decluttering. We also held cooking lessons hosted by Chaya Hinda Holtzberg and Julie Fleischman. These classes were made available for streaming afterwards for anyone who was interested. We have hosted a Friday afternoon virtual happy hour. Zoom book clubs were hosted by the talented Stacey Dworkin and Julie Katz. We hosted a presentation by JScreen: What's in Your Genes, The Importance of Jewish Genetic Testing (More than Just Tay Sachs), as well as a Nourishing Our Souls panel discussion moderated by Judy Alperin with panelists Rabbi Michael Farbman, Stacy Wyner and Dr. Alan Siegel. These sessions were both recorded and are available for viewing.

The realities of the time have forced us to reschedule our signature Cool Reads event for now. We are hoping to be able to have it live in the future. We are still looking to host the famous Bingo and Baubles (aka Handbag Bingo) event in the fall as our kickoff event (fingers crossed). We are exploring other summertime programming, like picnics, concerts, movies and other events that can be held outdoors with social distancing.

We may not be able to gather in groups, but as a community, we support each other. We are stronger together. This crisis has proven that time and again.

For more information on the Women's Philanthropy, visit [jewishnewhaven.org/womens-network](http://jewishnewhaven.org/womens-network).

## JCARR Participates in Global Refugee Sponsorship Summit

by Jean Silk

Coordinator for the Jewish Community Alliance for Refugee Resettlement (JCARR)

On May 6, I joined more than 225 people from 19 countries participating in a Global Refugee Sponsorship Summit via Zoom, sponsored by the Global Refugee Sponsorship Initiative (GRSI). For attendees in Geneva, it was late in the evening, while in New Zealand, it was the crack of dawn. There were differences in our time zones, our cultures and first languages; what we all had in common is passion for our work with refugee resettlement.

GRSI was launched in Ottawa, Canada, in December 2016. It works to assist and inspire countries around the world to open new pathways for refugee protection.

### THE AIM IS TO:

- Increase and improve global refugee resettlement by engaging private citizens, communities and businesses in resettlement efforts
- Strengthen local host communities that come together to welcome newcomers
- Improve the narrative about refugees and other newcomers.

I have been personally involved with refugee resettlement since 2016 when I became the Coordinator of the Jewish Community Alliance for Refugee Resettlement (JCARR) in New Haven, Connecticut. JCARR is one of about 50 community co-sponsors with the Integrated Refugee and Immigration Services (IRIS) in Connecticut. I was unaware of how extensive the co-sponsor model is internationally. The GRSI Summit offered an extraordinary opportunity to interact with my peers abroad. We heard stories from volunteers from Canada, England, Ireland, Wales, Italy, Australia, New Zealand and the United States as well as from professionals working with Amnesty International, Open Society, the UNHCR, the Canadian government and GRSI.

Gregory Maniatis of the Open Society spoke of the deep meaning that refugee sponsorship brings to our lives. On top of the crisis of displacement and of loneliness, we are now dealing with the new crisis of the COVID-19 pandemic. This pandemic is undermining institutions, highlighting conditions of inequality and demanding we

change our habits. With this crisis, too, comes opportunity. As country after country closes its borders to immigrants, we are pioneers in creating new ways to deal with refugee protection. We are revolutionaries; we model how communities can turn concerns into action. We have demonstrated that communities can form partnerships and turn sad stories into success stories.

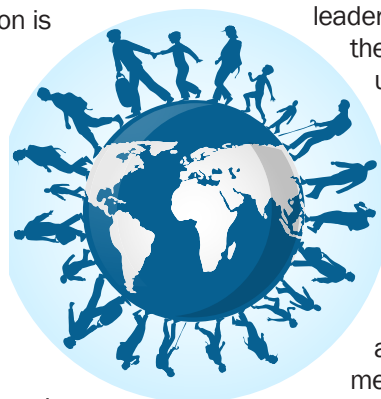
Bob Rae was Ontario's 21st Premier from 1990 to 1995, and served as interim leader of the Liberal Party of Canada from 2011 to 2013. Rae emphasized the role we play in breaking down stereotypes and increasing levels of understanding. "We share a planet," he said. We must address people's attitudes about "the other." Gillian Triggs of the UN High Commission for Refugees in Geneva spoke of their gratitude to community co-sponsors. She summarized challenges and opportunities in refugee resettlement today.

Among the challenges, COVID-19 has shed a light on inequalities; it has increased levels of social and economic distress, domestic violence, child abuse, lack of healthcare, and unemployment (refugees are the first to lose their jobs). UNHCR has had to discontinue resettlement as 160 states have closed their borders.

The current crisis also presents opportunities for new starts, new beginnings and recreating solutions. Triggs said the community co-sponsorship program is vital. The post-COVID-19 world needs to be one of greater welcome. "We need to open our hearts and open our doors," Triggs said. She quoted the UNHCR Secretary General, who says we need to, "Leave no one behind. we need to reach behind and bring them with us."

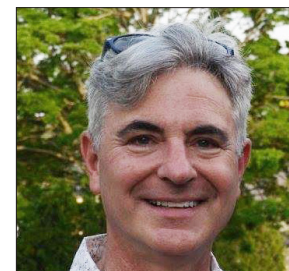
In conclusion, some volunteers say they are cautiously optimistic. With community co-sponsorship, we take bad news and turn it into good news. We value our peer-to-peer relationships. We model "treating one another as you would wish to be treated," Co-sponsorship helps society to grow. The benefits of welcoming refugees are reciprocal. Host communities are transformed. Indeed, we draw inspiration from each other. Ultimately working together in refugee resettlement give us a feeling of hope.

Jean Silk can be reached at (203) 687-8808 or [jsilk@jewishnewhaven.org](mailto:jsilk@jewishnewhaven.org).



## Howard Reiter Nominated to JFNA Board

Howard Reiter has been selected as a Trustee on the Jewish Federations of North America's board representing Intermediate Federations. He has been actively engaged in Jewish life in many organizations and multiple congregations in the New Haven area. He grew up in New Haven and currently resides in Woodbridge.



"We selected you from a slate of strong candidates with the belief that you will serve both as a terrific advocate for the needs of our Intermediate Federation communities as well as an effective communicator to our communities regarding the national system and the value it provides," said Julie Wise Oreck, Chair of Intermediate Federations. Congratulations from the Jewish Federation of Greater New Haven!

## HONORABLE MENSCHENS: Aiden and Gideon Reiter

We send out a heartfelt congratulation to Woodbridge's Aiden and Gideon Reiter. Aiden has been awarded a Fulbright English Teaching Assistantship in Laos. Gideon has been picked to be part of The Bronfman Fellowship's 34th cohort ([bronfman.org/meetthefellows](http://bronfman.org/meetthefellows)). Mazal tov to these accomplished Ezra Academy grads!



Aiden Reiter

Aiden is graduating from the University of Pennsylvania's Huntsman Program in the Wharton School of Business, majoring in international studies and political science. On campus, he is involved in student government and the International Affairs Association, where he has worked to organize Model UN conferences. In Laos, Aiden will teach English to university and secondary school students. He hopes to start a Model UN club for students, teach English to business owners and work with local NGOs.

Gideon is one of 26 North American teenagers selected to be a 2020 Bronfman Fellow. This year, he received first place

in the Choate Arabic Poetry Contest and will be representing his Arabic class in the CT COLT Poetry Recitation Contest. He is also a member of B'nai Jacob's chapter of Hazamir: the International Jewish Teen Choir.

This year's 34th cohort of Bronfman Fellowship awardees were chosen from more than 270 applicants. Due to the COVID-19 pandemic, they will participate in programming virtually until meeting in person is deemed safe. Usually, each cohort's journey begins with a five-week summer trip in Israel, where they engage in study and conversation. According to The Bronfman Fellowship, fellows encounter the land and people of Israel, study major issues in contemporary Jewish life, and meet with influential figures. The Fellowship year usually continues with monthly virtual experiences, and a winter and spring seminar in the U.S.

# A Community-based Family Business

by Sarah Lessing  
Shalom New Haven Staff Writer

When one mentions Abel Caterers, the first thought that comes to mind is likely the mouth-watering foods and diverse options that Meredith Abel and her creative team have put together to tantalize the taste buds. As the fourth-generation owner of a successful family business, she shares with us the story of her business, her strong commitment to the community and the Jewish values she relies on.

### FAMILY SPIRIT AND STRONG JEWISH VALUES

"That's always a fun story to tell," she says with a smile in her voice when questioned on the birth of the business. Meredith Abel's great grandfather, along with her grandmother, had a kosher catering business in Baltimore, Maryland.

"My father, Neil Abel, came to New Haven in 1971 to attend school and graduated from the Culinary Institute of America," Meredith explains. In 1972, the New Haven Jewish community gave him a platform for a catering business. In the following decades, through hard work and dedication, Abel Caterers established itself as a household name within the Jewish community. Following Neil Abel's passing in 2007, and while in the midst of applying for Ph.D. programs in history, Meredith made the decision to honor her family legacy and chose to jump into the business.

"It was a difficult transition, but the community was very good to me," she recalls. "The Jewish Federation, the JCC, Ezra Academy and other organizations all helped to get me on my feet. Even with the crash in 2008, it took time to rebound from that. But we did it."

Catering quickly became Meredith's passion; word spread beyond the local community. Abel Caterers is now using creativity and a commitment to quality to serve innovative kosher cuisine from Boston to New York City. "We have been in business in New Haven for 48 years, and we are looking forward to celebrating 50 years in 2022," she says enthusiastically.

Abel Caterers' Jewish identity goes beyond providing high-quality kosher food. The Jewish values Meredith learned from her father hold a special place in her life. "I was raised to do mitzvot (good deeds); there has been a tzedakah box (collection box for charity) near me since the day I was born," she says. "Being raised in this community gives you the feeling of belonging for life."

Meredith is involved personally in many local and national Jewish organizations, including sitting on the boards of the JCC and Ezra Academy, and being a Lion of Judah with the Women's Philanthropy. Being the local kosher caterer is a role she takes seriously. With almost no other local kosher options, Meredith is happy to make food for the community, whether it's a dinner for four or a wedding. Cafe 360, located in the JCC of Greater New Haven, offers a selection of Abel Caterers' products, allowing guests easy access to delicious kosher options.

### BRINGING THE COMMUNITY TOGETHER

Abel Caterers started as a family business, and that family has since grown to include the entire community. "I was raised to be part of a kosher community. We know how important it is for some people to keep kosher and to have access to kosher food; that's why we have a kosher certification," Meredith says. "My father taught me it is important to have a way for people to have kosher food and to accommodate religious families with a proper supervision. We have three kitchens: one meat, one dairy and one parve." Jewish customers from all levels of religious observance place orders. About 70% of the catering service's customers actually don't keep kosher. People turn to Abel Caterers as the team has a reputation for quality, good portion sizes and great customer service.

It is precisely her love for the community that makes Meredith concerned for the future. "We see other communities across the country losing their Jewish school, their kosher



# Health Opportunities During This Isolating Time

by Susan Donovan  
 Director of Fitness & Wellness Services  
 JCC of Greater New Haven

The pandemic lockdown has given us the opportunity to learn many lessons if we choose to look at it that way. Among the fear and isolation, there is some light and positives from all of this that we should keep in mind. Certainly, a pleasantness can be found in the calm and slower lifestyle that has been pushed upon us in the lockdown. Mother Nature had a well-needed "time-out" with the environment definitely benefiting from less cars being on the road and pollution being pumped out. And, for some, working from home has removed the hustle and stress of the daily rush hour.

In every experience, both good and bad, opportunities are presented to us that can lead to enhanced personal growth and help us realize what's truly important in our lives.

**HEALTH leads the list as our most important asset.**

This coronavirus has certainly brought light to the importance of a healthy immune system. Most of us have gone through life not thinking much about our immune system. We've always just trusted it's doing the best it can to protect us from infections and disease. But we do have control over keeping our immune health strong by feeding our body good nutrition, choosing to be active, managing stress and getting enough quality sleep, to name a few.

**GRATITUDE is not far behind for all our blessings big and small.**

This crisis has taught us the fragility of life and, with that, a deeper sense of appreciation for our environment, our family and our health.

**Finding our INNER STRENGTH is important.**

We are stronger than we think and, when faced with adversity, we can dig down deep into ourselves and find meaning and purpose to each day.



**We are seeking CONNECTION or reconnection to our core values and principles.**

Between our health and loved ones, it has become more clear what's important in our lives.

**Realizing ADAPTABILITY in work and personal life is beneficial.**

Through learning technology to work remotely or to stay socially connected when our fitness facility closed, we found new ways to work out through virtual platforms and outdoor activities.

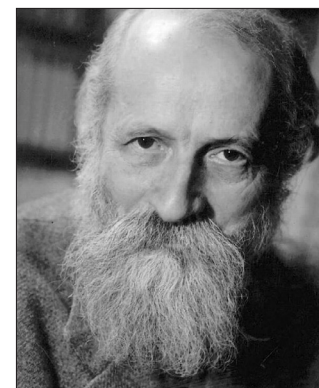
And, speaking of fitness, there may be a new fitness revolution on the back of this pandemic where there is a focus on healthy living in harmony with the environment. Activity and movement programs will be geared toward your health and wellness goals while virtual fitness programs will offer more options and variety along with live classes. The growth of health coaching alongside personal fitness training can offer guidance in sustainable lifestyle change.

Our new normal will find the JCC Wellness and Fitness Center transformed as well. We will be impacted by what we have gone through by being equipped with appropriate spacing protocols to keep our members safe as they resume some sense of social connection and camaraderie. We will all come back stronger, wiser and a bit more grateful.

For more information on joining a virtual class or an online healthy coaching session, contact [susand@jccnh.org](mailto:susand@jccnh.org).

# Of Yearning and Encounter

by Eliraz Shifman Berman  
 Director of the Jewish Community Relations Council and Center for Jewish Life and Learning



The David B. Keidan Collection of Digital Images from the Central Zionist Archives (via Harvard University Library).

To live in a pandemic is obviously a very challenging experience for us all. Our lives have changed; we are trying to cope with our new reality. Some say that we live in a time where the virtual sphere can compensate a bit for some of the difficulties imposed by social distancing. The Jewish Federation and the JCC of Greater New Haven have adjusted to the new reality and provide many online opportunities to learn and meet.

Martin Buber, the great Jewish philosopher (1878-1965) wrote in his magnum opus *I and Thou*: "No purpose intervenes between I and You, no greed and no anticipation...Only where all means have disintegrated, encounters occur." Buber contends that relationships are the basis of the human existence. The "I and you" relationship is where we see each other as subjects, where we don't only experience others but truly encounter them.

With all the benefits of the virtual world, many of us do yearn for this Buberian "I and you" type of encounter nowadays. The virtual world puts an object—the screen—between us, and it may hide some of the essence of encountering each other.

Referring to a different kind of encounter, it is said in the Talmud that Rabbi Nehunyah ben Hakanah (Mishnaic sage of the first century CE) would recite a brief prayer upon his entrance into the Torah study hall and upon his exit. His friends didn't understand it. Is the study hall a dangerous place that requires a prayer? Nehunyah replied that, "Upon my entrance, I pray that no mishap will be caused by me and, upon my exit, I give thanks for my portion."

Even if we settle with this answer, we can still ask why he had to repeat it every day. Rabbi Bakshi-Doron, who passed away recently, refers to this question in a Buberian way to say that every encounter changes our essence. Upon exiting, we are not the same as when we entered; that is why we need to give thanks each time.

I feel those ideas of encountering are very applicable to me personally. After a year and a half as a professional at the Jewish Federation of Greater New Haven, I will be going back to Israel this summer. I leave our community with mixed emotions. The time here was meaningful for me in ways that words can hardly express. The wonderful people I got to know, the community I love and the meaningful encounters all changed my essence. I will miss them all very much. Upon my exit, I express the deepest thanks to my portion, and pray that we will all be able to meet again, in person, face-to-face, soon.

For more information on the Jewish Community Relations Council and Center for Jewish Life and Learning, connect with Eliraz Shifman Berman at [eshifmanberman@jewishnewhaven.org](mailto:eshifmanberman@jewishnewhaven.org) or [jewishnewhaven.org/jewish-community-relations-council](http://jewishnewhaven.org/jewish-community-relations-council).

# Yale Hosts Masks for CT

Masks for CT distributed nearly 50,000 masks for personal use at a drive-through event hosted by Yale University on the Yale West Campus in Orange on May 21 for those in the New Haven, Orange and Milford communities. Yale University teamed up with the Jewish Federation of Greater New Haven, Masks for Heroes, Channel 3 and 99.1 WPLR on this event.

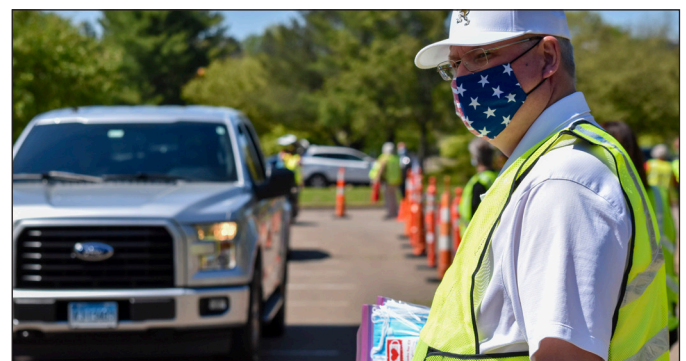
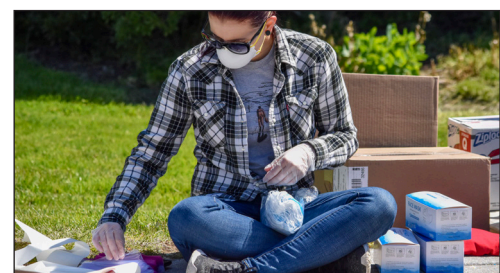


Masks for CT



Jewish Federation OF GREATER NEW HAVEN

Yale

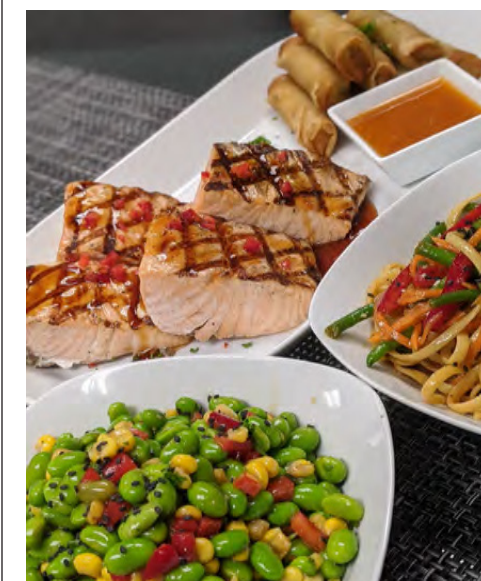


# ABEL CATERERS DINNERS TO-GO

[abelcaterers.com](http://abelcaterers.com)



Made Fresh Daily



Dinners Serve 4 \$49.99

**Liverpool PRODUCTIONS**  
 CALL CHARLES!!! 203.795.4737  
 DJ/Music/Entertainment for any Occasion  
 Proud to be Entertaining the Community Since 1978!

## A WORD FROM OUR LOCAL RABBIS

During this time, we are also separated from our congregation families and leaders. We turn to one local rabbi for his words of wisdom about this challenging time.

# Keeping the Light Burning Bright

**RABBI BRIAN P. IMMERMAN**



Even though we have not been in our synagogue buildings for several weeks as a community, there is one light that is always on because it has no switch—our ner tamid, our eternal light. We place this light in front of our ark in ornate candelabras to fulfill the commandment in Leviticus, which teaches that the Israelites, "should bring you clear oil of beaten olives for lighting, 'lahalot ner tamid,' kindling lamps regularly." Many of us have come to love and believe that ner tamid means that the light should never, ever go out, yet this understanding is only 300 years old.

In the ancient temple, this light was probably allowed to go out and was re-lit every night, according to our sages. Until recently in human history, light has been very expensive as we moved from burning wood to animal fats to oil and now to electricity. Today, with LED lights, we can ignore the light, confident that it is on for years and decades while costing only several dollars during that time period.

Like so many of you, I miss seeing our ner tamid in our building, but I know that it is continuing to shine. While our buildings have been closed, our community continued doing what we do best—praying, learning, supporting, celebrating and giving. Worship services went online, community members reached out to one another, and donations to food banks and those most impacted continued to grow. And more than ever we understand what it means to be connected to others. Our community's ner tamid will never go out.

The light that requires much more effort and care is the light that burns within us. It requires us to find energy that fills us, and to seek and recognize the blessings that surround us. Especially now, when we are physically separated, we might find that this is more challenging than ever before. It is essential that we all keep this light burning within ourselves and others.

We nourish our souls when we find opportunities for gratitude and hope. Take time to care for yourself, whether that means joining your synagogue community for worship on Friday night, learning on Shabbat morning or reading the growing stack of books on your nightstand. It can mean walking around your neighborhood or a park, calling a family member or friend, or going for a run or bike ride. Perhaps you will join the growing ranks of Jews who are finding joy in making their own challah for Shabbat. No matter what brings you joy, take time to seek out that activity to keep your light burning always.

May our connections and communities light the lights within each of us as we navigate our future together.

Rabbi Brian P. Immerman is the rabbi of Congregation Mishkan Israel in Orange. Connect at [cmihamden.org](http://cmihamden.org).

# 5 Things to Do With Dad on Father's Day

Father's Day is right around the corner, as is summertime! Here are some great ways to make dad feel special on his day (or any day) while keeping little hands engaged and learning.



### GO ON A NATURE WALK

Gather the family together for a walk outside. Take note of plants, trees, insects and other interesting things you see on your walk. Collect dandelions, pinecones and leaves in a bag. When you're done with your walk, you can turn your collections into art for dad. Try making dandelion paintings or printing with leaves.

### CLEAN OUT DAD'S CLOSET

Sure, this sounds like a chore, rather than an activity—but stay with us. Kids can help dad with some better-late-than-never spring cleaning and turn some of his castoffs into cool household items or gifts.

Give new life to some of dad's old ties by turning them into wearable art. Handprint ties are a fun, messy, hands-on, way of creating something new from something old. Kids can also help dad clean out his closet and collect old



tshirts that can be turned into pillows, a quilt, or reusable grocery bags.

### EAT SOMETHING, MAKE SOMETHING; MAKE SOMETHING, EAT SOMETHING

Create a special breakfast together or work up a sweat with some chores, eat some popsicles to cool off, and then use the left over sticks to make a key holder for dad's keys, ID and pocket change.

### UPGRADE THE BACKYARD

Recycle old milk bottles into a backyard bowling set, set up a DIY outdoor movie screen, or turn a stump into an outdoor tic tac toe game.

### WASH THE CAR

Give each kid their own bucket, grab some sponges and cloths, and have at it. Not only is car washing fun and physical, but it's also productive. Feel free to sidetrack that productivity by tossing a bubble wand or two in with the soap buckets.



### **todah** by Kyra Teis

AGES 6 MONTHS TO 2 YEARS  
([pjlibrary.org/books/todah/if00534](http://pjlibrary.org/books/todah/if00534))

Babies have so many blessing—so many things to say "todah" or "thank you— for! And so do their parents. All you need to do is stop and notice.

### **No Room for a Pup**

AGES 5 TO 6 YEARS  
by Elizabeth Sunby and Laurel Molk  
([pjlibrary.org/books/no-room-for-a-pup/if01039](http://pjlibrary.org/books/no-room-for-a-pup/if01039))

Mia wants a puppy, but her mom thinks their apartment is too small. In the tradition of a classic Jewish folktale, Mia and her grandmother hatch a plan. Big question: When have you stretched your heart?

*The Towers at Tower Lane Thanks You!*

**We Appreciate Your Support During the COVID-19 Pandemic**

Your Donor Impact At-a-Glance | March 17 - May 30

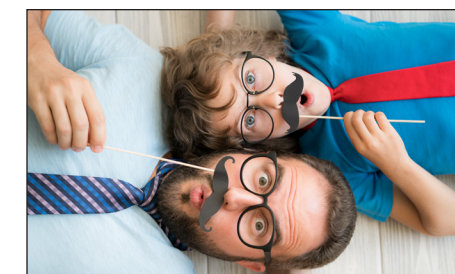
17,112 Additional Meals Served | 217 Participating Residents

\$66,679 in Subsidies | PASSOVER MEALS AND GROCERIES MADE AVAILABLE TO ALL

Thank you to the Jewish Federation and Jewish Foundation's COVID-19 Response/Maimonides Fund, and to all our generous donors for their support

**THE TOWERS AT TOWER LANE**

The Towers at Tower Lane • 18 Tower Lane, New Haven, CT 06519 | [www.towerone.org](http://www.towerone.org)



### Have you ever wondered, 'What's Jewish about Father's Day?'

Read Rabbi Brad Hirschfield's "Father's Day, It's a Mitzvah!" ([thejewishweek.com/editorial\\_opinion/opinion/fathers\\_day\\_its\\_mitzvah](http://thejewishweek.com/editorial_opinion/opinion/fathers_day_its_mitzvah)) to learn more.

## Start the Summer with PJ Library

If you are a young family in the Greater New Haven area, you can receive a free Jewish children's book every month, compliments of PJ Library. PJ Library serves any family raising Jewish children from six months through 12 years of age, including affiliated, unaffiliated, interfaith and non-traditional families.

There is no cost to you! It's a gift from the Jewish Federation of Greater New Haven, the Abraham Cohen Family, and the Harold Grinspoon Foundation.

In our community, PJ Library is about more than just the books. Throughout the year, we normally gather for story times and special programs where you can come to meet new friends.

Sign up online at [jewishnewhaven.org/pj-library](http://jewishnewhaven.org/pj-library) or contact PJ Library's Stacey Battat at [pjlibrary@jewishnewhaven.org](mailto:pjlibrary@jewishnewhaven.org).



**Jewish Federation OF GREATER NEW HAVEN**

**DON'T FORGET:**

**Pediatrician offices are open during COVID-19 for**

VACCINES

WELL-CHILD VISITS

MENTAL HEALTH ISSUES

ILL-CHILD VISITS

# Tributes & Remembrances

## JEWISH FEDERATION

In honor of the birth of Ellie Claudette Silverman, granddaughter of Jay Sokolow & Ina Silverman  
*Judy Alperin*

In memory of Jonathan Snyder's father  
*Amy & Mark Holtz*

In memory of Sylvia Portoff, grandmother of Debbie Brander  
*Amy, Mark & Sarah Holtz  
Toby Ignal  
Barbara Rubin  
Tina Swirsky*

In honor of Susan Jacobs Skowronek & Stephen Skowronek  
*Deborah Nadler Broomfield & Michael Broomfield*

In memory of Lillian Chasnoff, grandmother of Emily Sandberg  
*Amy & Mark Holtz  
Judy Alperin*

In memory of Doris Dimenstein  
*Judy Alperin*

In honor of the birth of Cornelia Abel-Berei  
*Amy, Mark & Sarah Holtz*

In honor of Judy Alperin  
*Allan Hillman*

In honor of Jake Teplitzky's college graduation  
*Amy, Mark & Sarah Holtz  
Judy Alperin*

In memory of Helene Rosenberg  
*Harriet Zitser Blakeslee*

In honor of Noah Diamondstein being ordained as a Rabbi  
*Robyn & Jeffrey Teplitzky  
Amy, Mark & Sarah Holtz*

In memory of Norman Goldbloom  
*Joan & Stuart Margolis*

In memory of Miriam Spaner, grandmother of Stacey Wyner  
*Judy Alperin*

In honor of Bob Stefanowki's birthday  
*Mark Shiffrin*

## JCC

In honor of the birth of Willa Rose, granddaughter of Barry & Hyla Vine to the Send-a-Kid to Camp Scholarship Fund  
*Judy Alperin  
Amy & Mark Holtz*

In honor of the birth of Dylan Henry Lang Diamondstein, grandson of Judy Alperin  
*Lisa Kirshner*

In honor of the birth of Cornelia Abel-Berei to the Send-a-Kid to Camp Scholarship Fund  
*Judy Alperin*

In memory of Marvin Gutkin  
*Sandy & Elliott Kerzner*

To purchase a tribute card:  
[jccnh.org](http://jccnh.org), [jewishnewhaven.org](http://jewishnewhaven.org), [newhavenjewishfoundation.org](http://newhavenjewishfoundation.org)

\*Tributes listed are up to May 27, 2020.

## COVID-19 MAIMONIDES RESPONSE FUND

In memory of Judy Andreas  
*Linda Tishler*

In memory of Eric Loeb  
*Judy Kaplan*

In memory of Jonathan Snyder's father  
*Lisa Stanger & Greg Colodner*

In memory of Jennifer Gelband's father  
*Lisa Stanger & Greg Colodner*

In honor of Carleen Celmer  
*Francis Celmer*

In memory of Judy Richeimer  
*Linda Tishler*

In memory of Eleanor Abramowitz Selevan  
*Elaine Chapman*

In honor and appreciation of Lauren Hass  
*Stephen & Cindy Brenner*

In honor of Jake Teplitzky's college graduation  
*Robyn & Jeffrey Teplitzky*

In honor of Molly Teplitzky's birthday  
*Robyn & Jeffrey Teplitzky*

In memory of Lillian Rappaport  
*Linda Tishler*

In memory of Norma Botwick  
*Linda Tishler*

In honor and appreciation of Betty & Arthur Lev  
*Stephen & Rachel Wizner*

In celebration the JCC staff for all of their hard work throughout the years and the level of care and commitment always exhibited  
*Timothy Murray*

In honor of Miriam Benson's special birthday  
*Carl & Sharon Astor*

In memory of Jennie Kliger  
*Richard Backer & family*

## JCARR

In honor of Susan Millen  
*Shari, Ken, Emi & Zoe*

## JEWISH FOUNDATION

### LEONARD MARGOLIS ATHLETIC ENDOWMENT FUND

In memory of Norman Goldbloom  
*Stephen & Ronda Margolis*

### ELAINE AND DR. JOSEPH DWORKIN FUND FOR ART EDUCATION

In memory of Elaine Dworkin  
*Charlie & Bari Popkin*

### COVID-19 RESPONSE-MAIMONIDES FUND

In memory of Issac Kalina  
*Eric Ravid*

### ESTHER KREVIK AND ANDREA KREVIK ROSS FUND FOR THE BENEFIT OF SPECIAL NEEDS CHILDREN

In Memory of Douglas S. Ross  
*Barbara & Jeffrey Lash  
Mark & Arlene Litow  
Donald & Carolyn DeChello  
Patricia & Keith Daniello  
Susan & Alan D'Amato  
Daniel & Susannah Vining  
Rachel Rosen & Michael Collins  
Mario & Rosemarie Meglio*

# Abel's Family Business

CONTINUED FROM PG. 9

restaurants, their JCCs; we need to continue to support Jewish life by making contributions, whether it is financial, giving time, sending kids to summer camp, going to the JCC or volunteering," she says. She reminds people that these Jewish resources can be gone in a heartbeat.

With the current crisis related to COVID-19, community is proving to be more important than ever. "If I didn't have the support of the community, I would have closed my doors after spending the last 12 years building something I am very proud of," she says. The support from the local community is making a huge difference as businesses—particularly small family businesses—are facing difficult times. With galas, weddings, baby namings and funerals cancelled, her season is gone, Meredith reveals as she tries to keep people employed. With great uncertainty as to when people will feel comfortable enough to have large gatherings and festivities again, the company is losing a considerable amount of business. Community members are helping to keep the service running by placing take-out orders, which is vital to Abel Caterers. They drop food at people's homes; it's also a relief for parents not to be worried about feeding their kids after a day of working and schooling from home.

Meredith, who recently welcomed a baby girl to the world with her wife, stays positive. She is looking forward to being able to share in many simchas (joyful events). "I am waiting to have our baby naming until we can gather all together," she says. "I've been very lucky to have a lot of friends in this community who were very happy for us; it's hard not to share our joy. But we know how to throw parties here, and we're looking forward to celebrating!"

And when the time comes to once again celebrate together, the community knows just the people to call to feed guests!

For more information and to place an order, visit [abelcaterers.com](http://abelcaterers.com).

# Trump Signs Education Act

May 30, 2020 - Jewish News Syndicate - U.S. President Donald Trump signed the Never Again Education Act, which seeks to expand Holocaust education in the United States, into law on Friday.

The U.S. House of Representatives passed the legislation in January, while the U.S. Senate did so on May 13.

The new law expands the U.S. Holocaust Memorial Museum's (USHMM) education programming to teachers nationwide, requiring the museum to develop and disseminate resources to improve awareness and understanding of the Holocaust and its lessons.

A total of \$2 million will be allocated annually this year and for each of the next four years to the Holocaust Education Assistance Program Fund, administered by the USHMM's governing body, the U.S. Holocaust Memorial Council. Private donations for the fund would be permitted.

The measure will create an online Holocaust-education repository of resources for educators to teach both middle-school and high school students about the genocide that killed 11 million people, 6 million of whom were Jews.

"The bipartisan Never Again Education Act is finally law," Rep. Carolyn Maloney (D-N.Y.), who introduced the U.S. House of Representatives bill with Rep. Elise Stefanik (R-N.Y.), told JNS. "I'm proud our country has come together to make clear that anti-Semitism cannot and should not be tolerated."

She noted that "our children are not born with hate in their hearts, and by providing educators with the tools they need to teach about the Holocaust, we can ensure they never learn it. Teaching our children about the dangers of anti-Semitism and hate is a proactive way to stop anti-Semitism before it even starts."

Currently, 18 states either encourage or require teaching about the Holocaust.

Source: [jns.org/trump-signs-never-again-education-act-into-law](http://jns.org/trump-signs-never-again-education-act-into-law)

Share life  
Give blood



9 A.M.  
to  
6 P.M.

JUNE 15 @ THE JCC!



American  
Red Cross

BLOOD DRIVE

During the pandemic our campus has continued to serve the community as we always have in times of crisis—as a launching point for Masks for CT and now in partnership with the Red Cross, we are opening our doors.

Complete your RAPIDPASS online at [redcrossblood.org/rapidpass](http://redcrossblood.org/rapidpass) or on the Blood Donor App the morning of your blood donation. This will allow you to answer the health screening questions prior to coming in to donate blood. You must save the QR code given to you at the end to be scanned by an American Red Cross employee upon arrival.

BECKERMAN/LENDER JEWISH COMMUNITY BUILDING, AUDITORIUM, 360 AMITY ROAD, WOODBRIDGE, CT 06525

The patient care here is second to none. My entire family are patients of this practice, including my son. I wholeheartedly recommend Brush & Floss Dental to anyone looking for a practice with a really hands-on, caring approach.

-Steve, Patient

BRUSH & FLOSS  
DENTAL CENTER  
203.378.9500 | [BetterSmile.com](http://BetterSmile.com)

HIGH-TECH FAMILY, COSMETIC  
AND IMPLANT DENTISTRY

We want your family to be a part of our family. We are dedicated to providing patients with the best dental care available. Our office staff is friendly and welcoming, and our facilities are comfortable, creating a relaxing experience during your visits.

4949 Main Street, Stratford  
P: 203.378.9500 | F: 203.386.9057

Mon-Thurs: 8am - 8pm | Fri: 8:30am - 5pm  
Sat: 8:30am - 4pm

All consultations are complimentary! Call today to schedule yours!



Dr. Johna Zitnay, DMD



Dr. Gemma Kwolek, DDS

Dr. Julia Latham, DDS



Jewish Federation  
OF GREATER NEW HAVEN

*Jewish Moments*

POWERED

by

YOU

# "Ensuring Continuity Through Crisis"

## YOU POWER JEWISH LIFE

Our Jewish Federation is optimally positioned to ensure a comprehensive and coordinated approach to tackling the greatest challenges facing our community. The importance of a strong and vibrant Jewish community has never been clearer than it is today. The Jewish Federation of Greater New Haven is proud to play a role in safeguarding the most vulnerable among us, and to help coordinate and communicate the efforts of our community partners. Make your gift today so we can come together as a community, tomorrow.

[www.jewishnewhaven.org/give](http://www.jewishnewhaven.org/give)



Jewish Federation  
OF GREATER NEW HAVEN