

NON-PROFIT
STANDARD MAIL
U.S. POSTAGE
PAID
Permit No. 2134
New Haven, CT

B7H

CHABAD OF THE SHORELINE JEWISH FESTIVAL



14TH ANNUAL CELEBRATION OF JEWISH LIFE

JULY 14, 2019 | 12-5 P.M. | GUILFORD GREEN

ADMISSION AND MUSIC FREE

FOOD, CRAFTS AND JUDAICA FOR SALE

CHECK US OUT

www.shorelinejewishfestival.com/
www.facebook.com/shorelinejewishfestival
203.533.7495
chabad@snet.net

THANK YOU SPONSORS!

Primary sponsor: Boris Mizhen
Additional sponsors: Jewish Federation of Greater New Haven, Gladeview Rehab & Health Care in Old Saybrook "Right on the Water," Sound Spectrum Entertainment of Wallingford, Guilford Courier, Cherry Hill Construction, Goody's Hardware

The Voice of the Greater New Haven Jewish Community

SHALOM



Honorable
Menschen:
Rabbi Reena
Judd page 26

NEW HAVEN

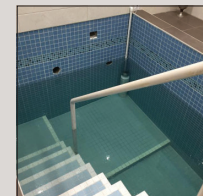
SUMMER 2019 • TAMMUZ/AV 5779

Celebrating Shabbat this Summer in New Ways

page 4



JCARR's Generosity:
A Family's Story
page 19



MIKVAH ONCE AGAIN IN USE

New Haven Mikvah has finally reopened following months of extensive repairs. **PAGE 18**



CHOOSE YOUR RELIGIOUS SCHOOL

Hebrew Schools throughout community teach fundamental values of Judaism and instill Jewish pride. **PAGE 14**



BDS IN NEW HAVEN

Anti-Israel incidents on campuses quadruple. Israel Action Network, a Federation Partner, responds. **PAGE 15**



FROM THE DESK OF
JUDY ALPERIN
CHIEF EXECUTIVE OFFICER | jalperin@jewishnewhaven.org

Memories From Day Camp



In this photo, I am standing at the dock of Camp Hilltop in Medford, NJ (circa 1972), which would grow to become JCC Camps at Medford, the largest Jewish day camp in the country. Many of my best childhood memories took place at JCC camp.

My earliest memory is of Shabbat: sitting on the floor of the pavilion, the cool concrete under me, wearing blue shorts and a crisp white camp t-shirt as a local rabbi led us in prayers and song. I remember the candles flickering with the dense trees behind them. I remember the sweet smell of the fresh challah slice as it was handed to each of us. I felt warm and special and part of something bigger than my 3-year-old self.

I was always a day camper. I spent two half summers at the New Jersey Y overnight Camps in Milford, PA, but tripping over a tree root and 8 stitches on my forehead ended that foray. I loved camp and as a teenager I continued summers there as a counselor, lifeguard and ultimately a pool director. When my friends kidnapped and blindfolded me for my surprise bachelorette party, I still knew I was at camp, with that unmistakable scent of the New Jersey pine barrens and the soft sandy soil under my feet. There is no question that camp played a huge roll in determining my Jewish future and in developing my leadership abilities. I will be forever grateful.

Every year, the Jewish Federation makes Jewish summer camp possible for over 1,000 children in our community. Camp Laurelwood, Camp Gan Israel, and JCC Day Camps are all supported through contributions to the Annual Campaign. Summer Jewish camping experience is an investment that reaches far and beyond summer fun; campers are sowing the seeds for a lifetime of meaningful connection to Judaism. According to the Foundation for Jewish Camp, by the time campers reach adulthood, Jewish campers are:

21% more likely to feel that being Jewish is important.

26% more likely to be members of a synagogue.

55% more likely to feel very emotionally attached to Israel.

Seven out of 10 young Jewish leaders in their 20s and 30s attended a Jewish summer camp.

Because of the importance of Jewish camping to the future of our community, the Jewish Foundation of Greater New Haven offers incentive grants to first-time campers and needs-based scholarships to families in our community attending Jewish overnight camp.

In Greater New Haven, campers will experience Israel through the eyes of Israeli counselors who enrich our programs for during two weeks in July.

Israeli Emissaries in Training (EITs) will join Camp Laurelwood and JCC Day Camps as a capstone to their year-long leadership training program, provided through the Jewish Agency for Israel and our Southern New England Consortium (SNEC) partnership with the Afula-Gilboa region (also known as Partnership2Gether). Emissaries with the highest leader-

ship potential are then selected to spend a full year in a Southern New England community. This is the third summer of this program designed to develop more candidates from Afula/Gilboa.

By end of summer, we will welcome our new young emissaries, Li-on Avraham (female) and Tal Azizi (male). Li-on, from a moshav in the Gilboa, is a graduate of this special program and served as an EIT in New Haven. We are excited to welcome her back and look forward to Tal, from Rishon Letzion, becoming part of our community.

Israeli emissaries (shlichim) have enhanced our community for 19 years, and during that time more than 60 families have opened their hearts and homes to them. Many have made life-long connections. It is not unusual to hear stories of New Haven families traveling to Israel for weddings and other celebrations, as well as return visits from past emissaries. In fact, Nir, a prior emissary, will accompany this summer's EITs as a chaperone.

If your family would like to learn more about hosting an Israeli emissary, contact coordinator Amalya Brownstein, amalyab@jccnh.org.

The Jewish Federation's Annual Campaign is the economic engine that enables our Jewish community to thrive. Our mission is vast. Our work is seen and unseen. The people we touch live in Greater New Haven, in Israel and around the world. Jewish camps and programs like the Israeli emissaries are powered by your support of the Annual Campaign. July 31 marks the end of this year's campaign effort. If you have pledged your support, thank you! If you plan to do so prior to the close of the campaign, thank you, too! Every individual counts and every gift matters.

Judy



SHALOM NEW HAVEN

SHALOM NEW HAVEN is published six times per year and delivered free of charge to the Greater New Haven Jewish community by the Jewish Federation of Greater New Haven.

COPY DEADLINES
Copy deadlines for the upcoming Shalom New Haven issues are:

- July 26 for September/October issue
- Sept. 27 for November/December issue
- Nov. 25 for January/February 2020 issue
- Jan. 27 for March/April issue
- March 30 for May/June issue

SUBMISSIONS

To submit an article or photo, please email shalomnh@jewishnewhaven.org. Please include your contact information when submitting.

Space is limited; submission does not guarantee publication. All articles are subject to approval by the editorial board.

SHALOM NEW HAVEN STAFF

Nurit Kohl
Director of Marketing & Communications

Wendy Bowes
Senior Graphic Designer

George Hauer
Advertising Sales Manager

EDITORIAL BOARD

Chesky Holtzberg: Chair
Chava Light
Mark Oppenheimer
Cindy Papish Gerber

LEADERSHIP

Dr. Jeffrey Hoos
President

Judith Alperin
Chief Executive Officer

Scott Cohen
JCC Executive Director

Lisa Stanger, Esq.
Foundation Executive Director

Jewish Federation of Greater New Haven
360 Amity Road, Woodbridge, CT 06525
(203) 387-2424
jfgh@jewishnewhaven.org
jewishnewhaven.org/SNH



Romance, Without the Roses: Celebrating the Festive Holiday of Tu B'Av

by Talya Hyman
Shalom New Haven Intern



Tu B'Av, the Jewish holiday of love—which is named for its date on the Hebrew calendar, the 15th of the month of Av—will be celebrated this year beginning at sundown on August 15, and throughout the day of August 16. This day of romance dates back to ancient times. During the Second Temple period, unmarried women dressed up in white clothing and went out to the vineyards to dance. Single men watched from the sidelines, and then chose a wife for themselves.

Though not as commercial a holiday as the popularly celebrated Valentine's Day, the festive and romantic nature of Tu B'Av is still recognized within modern Israeli society. Music and dance perfor-

mances are held throughout the country, and many couples choose this date for their weddings.

While this holiday of love need not be observed with red roses and chocolate covered strawberries (or dancing in a white dress!), take advantage of Tu B'Av to share your appreciation of a loved one and spread just a little bit more kindness out to the world. Isn't that, after all, the real meaning of what it means to love?

Anti-Semitic Incidents in CT CONTINUED FROM PAGE 3

ANTI-SEMITISM AT AMITY HIGH SCHOOL - A FOLLOWUP

When anti-Semitic incidents in Amity High School became public this last November, ADL stepped in, together with the Jewish Federation of Greater New Haven and BBYO. Amity High School's commitment to changing their culture spruced meaningful action, marking the beginning of a long-term journey.

Connecticut ADL Deputy Director Marji Lipshez-Shapiro reports that some meaningful curricular, structural, and programmatic developments have already started taking place in Amity. Juniors and seniors lead discussions with 8th and 9th grade English students on intolerance and racism demonstrated through the books *To Kill A Mockingbird* and *Night*; teachers participated in ADL's Echoes and Reflections workshop on Holocaust education; a Holocaust survivor addressed the entire 9th grade class in May in smaller groups of about 80-90 students per session; and high school students trained in ADL's "Becoming an Ally" program, empowering bystanders to act against hate.

Next year, Amity High School will become one of two pilot schools bringing the ADL's No Place for Hate® initiative to Connecticut, according to Christina Gray, Associate Director of Education at ADL Connecticut. No Place for Hate® is a school climate improvement framework for preK-12 schools looking to build inclusive and safe communities where all students can thrive.

SAVE THE DATE!

DON'T MISS OUR 2019 Community-Wide Mega Event

The Edwards Twins!

Sunday, October 27 | 7 p.m.
Beckerman Lender Jewish Community Building, Woodbridge
Details to follow at:
jewishnewhaven.org/mega

For more info, contact: Amy Holtz
Chief Development Officer
(203) 387-2424 x254
aholtz@jewishnewhaven.org

DON'T MISS OUR ANNUAL MEETING: WED., JULY 10 | 7-9 P.M.
RSVP: jewishnewhaven.org/events
Or contact Jeanette Yurman at (203) 387-2424 x325



THE VALUES WE LIVE BY

HONORABLE MENSCHEN: Rabbi Reena Judd Shares her Perspective on Being a “Rabbi-ing Rabbi”

by Talya Hyman
Shalom New Haven Intern

Those who have spent more than a couple of minutes in the vibrant presence of Rabbi Reena Judd, the Quinnipiac University campus rabbi, know that her rabbinic role is more of a life mission than a job. “You don’t just leave it at the office,” she said. “It’s who you are and how you live your life and what you do and how you spend your time and the TV you watch and the tzedakah you give.” This declaration illustrates both the personal and professional philosophies of this self-described Jew-loving, left-wing Zionist.

The tranquil backyard of Rabbi Judd’s Hamden home set the scene for an open conversation about her life story, career accomplishments, and personal outlook on Judaism. From a chair beside her pond, she shared, “This is my happy place, where I come for shleimut [completeness].”

With excitement she shared the elaborate flowers she grows and the vegetable patch her husband attends to. “When I find myself searching [for G-d], and I don’t search a lot, I get back to the garden,” she said. Rabbi Judd made it clear that she does not categorize herself as a “G-d kind of rabbi,” as she said, “I never rely back on G-d for answers or reasons,” but it is here, she believes, that the “Creator of all Source” makes His presence most known to her.

Rabbi Judd was raised in Hamden where she grew up attending Temple Beth Shalom, a Conservative synagogue. “Hamden is what America is all about,” she said, labeling it as a neighborhood of “acceptance, tolerance, and community.” It comes as no surprise, then, that following a brief stint in Israel and in other communities in America, Rabbi Judd would eventually find her way back to her hometown, and this time, in a position of leadership.

“There’s a place in the Jewish world for a person like you,” the late Rabbi Jerry Brieger OBM of Temple Emanuel— with whom Rabbi Judd held a close relationship— shared with her. Rabbi Brieger’s assertion was transformative for Rabbi Judd, as it gave validity to her unique Jewish outlook. Moreover, it ultimately helped inform her decision to enter the rabbinate.

The pride Rabbi Judd feels from being a female rabbi is also mixed with frustration. “It saddens me because I have to live in the Diaspora to have the kind of rabbinical career; I couldn’t have it in Israel,” she said in reference to the fact that Israel does not recognize rabbinic female ordination. “It’s still a male-dominated field- not even just within the structure of Orthodoxy- when women are still earning only 78 cents to every man’s dollar.”

Over a five-year period, Rabbi Judd held pulpit positions in synagogues in Mississippi and New York state. From her experiences in these communities, Rabbi Judd felt that she was unable to reach the synagogues’ populations, therefore unfulfilling her rabbinic potential. “I could never do the pulpit because adults are calcified,” she said. “Their minds are hard.”

With this in mind, she found her way back to Hamden where she has spent the past 15 years serving as the Quinnipiac University campus rabbi. From this role, she is able to work closely with Jewish college students and play a meaningful part in their on-campus religious experiences.



“This is my happy place, where I come for shleimut [completeness],” Rabbi Reena Judd shared of the love she has for her garden.

“I bring Jews in. I’ve grown the community; the Jews that are choosing to come year by year are steadily more observant in their own life,” Rabbi Judd said. About 25 students now attend the weekly Friday night Shabbat service. She explained that while she serves as the religious conduit, the students are the ones to organize the Shabbat menu and to prepare the ritual items such as candles and cups of wine: “They make it happen, they do the hands-on tasks that you need to do to make Shabbat.”

Rabbi Judd understands the weight of her role as the sole Jewish presence on campus and seeks to create an environment where every student can come to breathe in a safe space. “I’m the personification of ‘Jewish’ in your life right now,” she said of how the Quinnipiac students view her position.

Rabbi Judd also acts as a personal mentor and friend to those who seek her wisdom and guidance: “My role is to make sure they know that Judaism cares if they’re happy or sad; they matter in the Jewish experience, even if they don’t know me.”

For the past 25 years, Rabbi Judd has been working on a book of alternative midrashim [biblical expositions], which she entitled *White by Default*. When asked about the book’s unique name she recounted what for her was a life-altering experience. Back when she was the rabbi in Mississippi she was asked, “How come your people are more white than they are Jewish?” to which Rabbi Judd responded, “You don’t know me and you don’t know that everything I do, I do because I’m Jewish. I’m just white by default.”

There it is, the declaration that all Rabbi Judd seeks to accomplish in her life must be done from a Jewish perspective. “How I perceive my world, how I perceive Torah, how I perceive America changed because of that man and that line,” she said.

Rabbi Judd holds undergraduate degrees in art history and social work, but she is most recently the recipient of an honorary Doctorate degree of Divinity from Hebrew Union College-Jewish Institute of Religion (HUC-JIR). According to the institute’s web-

site, “Distinguished communal and civic leaders and alumni will be awarded honorary degrees and prizes in recognition of their service to Reform congregations and North American Jewry, and in honor of their humanitarian work.”

“To work with youth is to kiss the future,” Rabbi Judd said. “And that’s how I feel every day when I go into work: Who am I going to kiss today? I always want to work with my Jews.”

While Rabbi Judd takes pride in the fact that she does not preach about religion, she does emphasize the importance of every individual’s need to be present within their own lives, as it ultimately enables them to appreciate other human beings’ inherent G-dliness, tzelem elokim.

“Such a big part of being Jewish is being present, bearing witness. Showing up for yourself- with intention and dignity,” she stressed. “Kavod and Kibud[honor/respect] are really important parts of how to be Jewish- you can’t be disrespectful of another person’s humanity. You can’t hold people against themselves.”

It is this undying love for all of humanity that helps Rabbi Reena Judd spread Judaism’s values of hope, kindness, and compassion to all those she encounters. “My personal mission statement is ‘a place should be more Jewish because I’ve been a part of it,’” she said, “And I’ve done that. Quinnipiac is a hell of a lot more Jewish because I’ve been there.”

Visit www.jewishnewhaven.org/rabbi-reena-judd to read one alternative midrash from Rabbi Judd’s upcoming book *White by Default*.

New ADL Report: Anti-Semitic Incidents In Connecticut Remain High

The number of reported anti-Semitic incidents in Connecticut declined slightly in 2018 but remained near-historic levels according to new data released in late April by the ADL (Anti-Defamation League). There were 39 incidents of anti-Jewish harassment, vandalism and assault reported in 2018.

The number of anti-Semitic incidents reported in Connecticut reached a peak in 2017, with 49 incidents, and 38 in 2016. This is the highest it has been in 12 years.

“While the number of incidents reported to our offices declined slightly in 2018, the level of reported anti-Semitic incidents over the last three years is the highest we have seen in over a decade,” said ADL Connecticut Regional Director, Steve Ginsburg. “Here in Connecticut, we are redoubling our efforts to educate students, communities, law enforcement and leaders on this pernicious age-old hatred.”

THE 2018 ADL AUDIT IDENTIFIED:

- 19 cases of harassment and threats in Connecticut
- 19 cases of vandalism in Connecticut
- 1 assault in Connecticut

WORKING TOGETHER TO INCREASE SECURITY

Following the October 27th attack on the Jewish community in Pittsburgh, the ADL and Jewish Federations of North America’s Secure Community Network (SCN) came together to address hate, anti-Semitism and threats as well as violence targeted at the Jewish community in the United States.

Building from the experience and expertise developed within the Jewish community, and inclusive of other faith-based communities, the task force which includes representatives from local, state and federal law enforcement will make recommendations to more effectively address hate crimes while enhancing safety and security for all faith-based institutions.

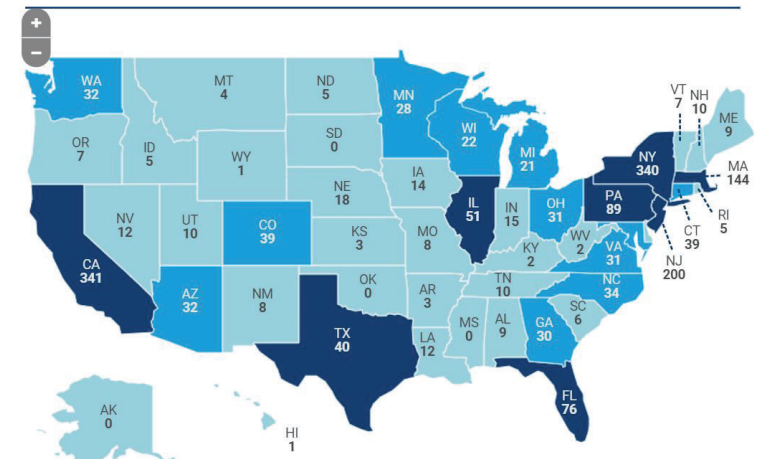
SCN works closely with the Jewish Federation of Greater New Haven

Nationwide, the U.S. Jewish community experienced near-historic levels of anti-Semitism in 2018, including a doubling of anti-Semitic assaults and the single deadliest attack in U.S. history at the Tree of Life Synagogue in Pittsburgh, Pennsylvania. The ADL’s annual Audit of Anti-Semitic Incidents recorded a total of 1,879 attacks against Jews and Jewish institutions across the country in 2018, the third-highest year on record since ADL started tracking such data in the 1970s.

A year marked by the white supremacist shooting spree that claimed 11 lives at the Pittsburgh synagogue, 2018 was punctuated by a dramatic surge in white supremacist propaganda activity nationwide. ADL’s Audit identified 59 people from across the country who were victims of anti-Semitic assaults in 2018, up from 21 in 2017, a 180% increase in just one year. While the overall number of incidents represents a five percent decline from the 1,986 incidents reported in 2017, the number still remains at near-historic levels – 48 percent higher than the total for 2016 and 99 percent higher than in 2015.

CONTINUED ON PG. 27

Anti-Semitic Incidents: U.S. 2018 Total Incidents By State



Looking for just the right spot?



DavisRealtyMadison.com

Let maintenance and taxes be our problem...
Check out our gorgeous downtown apartments!

837 Boston Post Rd | Madison CT 06443 | 203-245-4400 | DavisRealtyMadison.com

Alternative Shabbat Experiences this Summer

by Talya Hyman
Shalom New Haven Intern

This summer, experience the enjoyment of Shabbat with congregations throughout Greater New Haven as services are conducted beneath the stars, by a lake, and even on the beach!

Many community members are looking for an environment in which to experience their Judaism, without the formality of belonging to a synagogue. Additionally, traditional religious services within synagogue settings can be daunting and confining for some.

With this in mind, the open-door nature of the scheduled events allow for Jews across all denominations to come together in a pressure-free and fun environment. Those seeking a leisurely albeit spiritual Shabbat experience should look no further than these seasonal, alternative services being offered.

The various Shabbat services are being offered with the goal of ultimately inspiring us all to discover the beauty and depth of our own Jewish experience. Once we each uncover our personal sense of belonging, may we all connect— as one Greater New Haven Jewish community—to the inherent sanctity of Shabbat, together.



TEMPLE EMANUEL of Greater New Haven in Orange is offering their Shabbat Under the Stars services on July 26, at 7:30 p.m. on the synagogue lawn, so don't forget lawn chairs! They've also scheduled their Shabbat on the Beach services at Walnut Beach in Milford for August 2 at 6:30 p.m. and August 30 at 6 p.m. Beginning at 4:30 p.m. on September 6, their annual BBQ picnic gets underway with games & activities, followed by outdoor Shabbat services at 6 p.m.

CONGREGATION BETH SHALOM RODFE ZEDEK of Chester is planning to hold Shabbat services at Cedar Lake on July 12 at 5:30 p.m., which will be accompanied by a brown bag dinner. Everyone is invited to partake in the abridged service, games, and swimming. A Shabbat

BBQ is scheduled for August 9.

CONGREGATION OR SHALOM of Orange has scheduled their annual Shabbat on the Beach service at Gulf Beach in Milford on August 16 at 7 p.m. Participants are suggested to dress casually, to wear a hat (as yarmulkes may fly away), and to bring a beach chair or blanket. Beginning at 6:15 p.m., PJ Library will be co-sponsoring the event, so children are encouraged to attend.

Shabbat stories will be shared and songs will be sung.

TEMPLE BETH DAVID of Cheshire will be holding their Outdoor Ruach Shabbat on August 16 at 5:15 p.m. The synagogue's website describes the event as a "Shabbat with a little bit of soul and a whole lot of spirit!" Participants should bring their own dinner, and a dessert to share.

CONGREGATION B'NAI JACOB of Woodbridge is arranging a Shabbat on the Shore service for July 19. Planning is still underway.

TEMPLE BETH TIKVAH of Madison is hosting two Beach Shabbats, scheduled for July 19 and August 9, both at 6 p.m. at East Wharf Beach Pavilion.

As details of the various events are forthcoming, community members are encouraged to check the synagogues' websites for updates and more information.

Community Calendar

Event details subject to change. Please visit jewishnewhaven.org/events or jccnh.org/events.

july

New Haven Mikvah Re-Dedication Celebration July 7, 3-5 p.m., New Haven Mikvah Society, Contact: Tova Hyman (413) 627-2539, tovaEHyman@comcast.net

Ezra Academy Golf Classic July 9, 11:30 a.m.-8 p.m. registration begins at 11:30 am, lunch follows. Dinner at 6 pm.

Annual Meeting - Jewish Federation, Foundation and JCC of Greater New Haven July 10, 7-9 p.m. Beckerman Lender Jewish Community Center, 360 Amity Road Woodbridge, Contact: Jeanette Yurman (203) 387-2424 x325, jyurman@jewishnewhaven.org

JCC's Annual Grill & Chill July 11, 5-8 p.m., FREE. Featured band: The Red Hots, Kosher BBQ from Abels Catering available for purchase. BYOB. Beckerman Lender Jewish Community Center, 360 Amity Road Woodbridge, Contact: Derek Holodak, (203) 387-2424 x228, dholodak@jewishnewhaven.org

14th Annual Shoreline Jewish Festival July 14, 12-5 p.m., FREE. Food, Crafts, and Judaica for Sale. Guilford Green, Guilford CT. Contact: Yoseph Yaffe, chabad@snet.net

Temple Emanuel Shabbat Under the Stars July 26, 7:30-8:30 p.m., Temple Emanuel 150 Derby Avenue, Orange, Contact: Michael Farbman, (203) 397-3000, rabbi@tegnh.org



The Red Hots

august

Temple Emanuel Shabbat on the Beach August 2, 5:30-7:30 p.m., FREE. Walnut Beach, 113 E. Broadway, Milford, Contact: Ruth Gross, (203) 397-3000, office@tegnh.org

PJ Library and Temple Emanuel Shabbat on the Beach August 2, 5:30-7:30 p.m., FREE. Walnut Beach, 113 E. Broadway, Milford, Contact: Ruth Gross, (203) 397-3000, office@tegnh.org

JCC's Annual Grill & Chill August 14, 5-8 p.m., FREE. Featured band: Jake Kulak Band, Kosher BBQ from Abels Catering available for purchase. BYOB. Beckerman Lender Jewish Community Center, 360 Amity Road Woodbridge, Contact: Derek Holodak, (203) 387-2424 x228, dholodak@jewishnewhaven.org

PJ Library Shabbat on the Beach August 16, 6-6:30 p.m., FREE, Gulf Beach, Gulf Street, Milford, Contact: Contact: Stacey Battat, (203) 387-2424 x317

A conversation with the artist: Karen Kassap August 17, 12:45-2 p.m. BEKI, 85 Harrison St., New Haven, Contact: Peggy Hackett, (203) 389-2108, office@beki.org

Laurelwood Summer Social & Norman Feitelson's 95th Birthday Celebration August 18, 2-6 p.m. Camp Laurelwood 463 Summer Hill Road, Madison, Contact: Taylor McLeod, (203) 421-3736, taylor@camp Laurelwood.org

Temple Emanuel Shabbat on the Beach August 30, 6-8 p.m. FREE. Walnut Beach, 113 E. Broadway, Milford, Contact: Ruth Gross, (203) 397-3000, office@tegnh.org

JCC's Annual Grill & Chill August 28, 5-8 p.m., FREE. Featured band: To be announced, Kosher BBQ from Abels Catering available for purchase. BYOB. Beckerman Lender Jewish Community Center, 360 Amity Road Woodbridge, Contact: Derek Holodak, (203) 387-2424 x228, dholodak@jewishnewhaven.org

SAVE THE DATE

HEART TO HEART



Jewish Federation of Greater New Haven Women's Philanthropy

A Women's Journey to Israel

10TH ANNIVERSARY
FEBRUARY 2-6, 2020

Embark on a life-changing odyssey. Join like-minded, smart, motivated women from North America on a uniquely inspiring journey!

Spend 5 amazing days traveling Israel. Explore the country's rich culture, embrace your spirituality, and see how Federation helps those most at risk. You'll come home energized and raring to put it all into action in your community.

Every journey begins with a single step. Take the first one right now.

For more info, contact Amy Holtz at (203) 387-2424. x254

jewishnewhaven.org

Inaugural Isadore E. "Zeke" Still Award for Campaign Excellence

by MiriYam Judd
Shalom New Haven Intern



Photo from The Jewish Ledger

Every year in late August, Ken Cohen comes to the Jewish Federation Offices and selects donor cards. He begins contacting donors to secure pledges for our annual campaign. Within 30 to 45 days, he manages to complete all of his solicitations.

A physician working for the VA Medical Center in

West Haven, Ken has been involved with the Federation for years, working behind the scenes and not seeking any recognition to continue doing the good work. During this year's Annual Meeting, Ken will be awarded the inaugural Isadore E. "Zeke" Still Award for Campaign Excellence. This new award is named for Still, a longtime supporter of and solicitor for the Federation who made calls on behalf of the Federation throughout most of his adult life. A funny, kind, and generous man, there is no one more fitting to honor by establishing this award and no one more deserving than Ken to receive it.

Ken and his wife Linda have established a PACE fund (Perpetual Annual Campaign Endowment) to ensure their annual campaign gift continues, as well as an endowment for our JCC Marcia and Stanley Reiter Swimming Pool. Ken, like Zeke, exemplifies the core Jewish values the Federation aims to uphold—values like tikkun olam (repairing the world), tzedakah (charity), rachmanus (compassion), and chesed (kindness).

Where each student matters and every moment counts.

Small classes // Big experiences // Jewish values

To learn how your child can thrive here, please call:

Pre-K thru 8th grade: Denise Rafailov, 203-329-2186

9th-12th grade: Sarah Rich, 203-357-0850



Cross-grade learning in Bi-Cultural's Makerspace Innovation Lab



Tributes & Remembrances

JEWISH FEDERATION

In memory of Lester Margolis
Jeffrey Orell & Barbara Green Orell
Allan & Ellen Greenberg
 In memory of Linda Moskowitz
Bonnie Donato & Family
 In memory of Herbert Barker
Adrienne Silver
Judy Alperin
Amy & Mark Holtz
 In memory of Gertrude Sheppard
Judy Alperin
 In memory of Julie Shubik
Cindy Raymond
 In honor of Andy Sarkany
Betsy Ross Art Magnet School
Columbus Family Academy
Long River Middle School
Quinnipiac University School of Law's
Jewish Students Association
Ingrid Eaton
 In memory of Irit Perkins' father
Susan & Lenny Skope
 In memory of Lois Horn
Amy & Mark Holtz
Judy Alperin
 In memory of Merrie Henderson
Kayla Bisbee
Amy, Mark & Sarah Holtz

In memory of Rivka Schlechter
Judith Alperin
 In honor of Barnett & Helen Maller for
 Father's Day and Mother's Day
Robert & Jill Kesselman

JCC

GENERAL FUND

In memory of Arthur Greenberg:
The McNulty Family
Arthur & Abby Kleinberg
Harold & Patricia Levy
Daniel Roche
Sandy & Rick Whelan
 In memory of Shirley Dragunoff
Barry & Hyla Vine
 In memory of Stan Stein
Harriet & Ike Calechman
 In honor of Allan Greenberg
Michael Kahn
BEVERLY LEVY EARLY LEARNING CENTER FUND
 In honor of Ann Eden celebrating her 100th
 birthday
Lynne Franford
Jeanne Levin
Allan & Barbara Fried
Jane & Lawrence Nyce

To purchase a tribute card:
jccnh.org, jewishnewhaven.org, newhavenjewishfoundation.org

*Tributes listed are up to June 11, 2019.

The Stempler Family Foundation
Sheila & Shelly Lebowitz
Charlotte Streidel
Barbara Kaufmann
Julie Shapiro
Ann Rita Sterling
Donald & Judith Garner
Robin & Scott Cutler
Peggy Whitty
Ellen Marks
Judi Shulman
Geraldine Weiser
Lee & Gloria Derkay
Henry & Ellen Cohen
Heather Eden
Madelyn Shapiro
Susanne & Henry Singer
 In memory of Adele Altschuler
Kayla Bisbee
 In memory of my beloved, devoted daughter
 Beverly Levy
Ann Eden

JEWISH FOUNDATION

FRIENDS OF THE JEWISH COALITION OF LITERACY

In memory of Lois Horn
Ronald & Enid Groves
JEWISH CEMETERY ASSOCIATION OF GREATER NEW HAVEN
 In memory of Judith Goldstein
Prof. Edward H. Kaplan
GEORGE & SUSAN KRALL FAMILY PACE FUND
 In memory of Natalie Barsky, David Rappaport and Rita Lapidés
Susan & George Krall
BECKERMAN FAMILY FOUNDATION INC. JEWISH COMMUNITY CENTER ENDOWMENT FUND
 In memory of Shirley Dragunoff and Rita Lapidés
David & Ruthann Beckerman

JEWISH FOUNDATION OF GREATER NEW HAVEN DESIGNATED FOR PROFESSIONAL DEVELOPMENT

In honor of Lisa Stanger
Beth & Dan Weintraub
SUZANNE HECHT ENDOWMENT FUND TO SUPPORT ADL'S "CONFRONTING ANTI-SEMITISM" PROGRAM
 In memory of Suzanne Hecht
Arthur & Reena Seltzer
Lili & John Foggie
Jeffrey & Barbara Green Orell
Goret Family
Geri & Ross Mahler
JEWISH FOUNDATION OF GREATER NEW HAVEN
 In memory of William Weiss
Craig & Nanci Sklar
ELLIOT S. ALDERMAN FUND FOR THE BENEFIT OF TEMPLE BETH SHOLOM
 In memory of Elliot S. Alderman
Robert & Brenda Brenner
WOMEN OF VISION ENDOWMENT FUND
 In honor of Beth Kupcho on Mother's Day
Tobi Fineberg
JULIE KOVAR FUND
 In memory of Delores "Dee" Jacobs
Floria Amico
Robert S. Jacobs
 In honor of Phil Kovar's 95th birthday
Debbie & Larry Kaufer
 In honor of Phil Kovar
Jaclyn Kaufer

JCARR

In honor of Peter & Lee Stolzman's 50th
 Wedding Anniversary
Jean & Jim Silk
Christine & Monte Radler
Fran & Steve Grodzinsky
 In honor of Sue Millen
Kert & Karen Sabbath
 In honor of Nancy Kline's birthday
Joanna Spector



Jewish Teen Education
BY TEENS. FOR TEENS.

JTE Fall semester begins in September!
 Watch for more details

jewishnewhaven.org/jte

Porsche • Volvo • Mercedes • BMW

the Woodbridge AUTO BODY SHOP inc.

- American and Foreign Specialists -

Free Estimate • Frame Machine • Professional Insurance Help
 Loaner Car Available • Interstate Car Carrier Service

203.397.2909 36 LUCY STREET, WOODBRIDGE, CONNECTICUT 06525



Lynn Bullard Retires After 30+ Years of Service!

It was with mixed emotions that the staff of the JCC and of the Beverly Levy Early Childhood Center bade farewell to long-time BLELC Director Lynn Bullard at the end of May, after more than 30 years of service to the families of our community. Lynn shepherded thousands of children through our early childhood program with love, dedication and devotion. She will be missed tremendously!



Infant • Toddler • Preschool

Jewish values of respect for self, others, and the environment are woven throughout the curriculum. Every Friday, our school family celebrates Shabbat, with songs, grape juice, and challah. Children celebrate Jewish and secular holidays as part of a diverse community which welcomes families of all faiths.

Play-Based Curriculum

Building Relationships, Encouraging Curiosity & Developing Capability

OPEN TO CHILDREN OF ALL BACKGROUNDS

360 Amity Road, Woodbridge, CT 06525
 (203) 387-2424 x278 | jccnh.org

HIGH-TECH FAMILY, COSMETIC and IMPLANT DENTISTRY

We want your family to be a part of our family. We are dedicated to providing patients with the best dental care available. Our staff is friendly and welcoming, and our facilities are comfortable, creating a relaxing experience during your visits.



Dr. Jeffrey C. Hoos, DMD, FAGD | Dr. Johna Zitney, DMD | Dr. Gemma Kwolek, DDS | Dr. Julia Lethem, DDS

BRUSH & FLOSS
 DENTAL CENTER

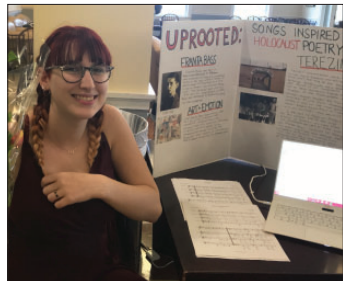
203.378.9500 | BetterSmile.com

4949 Main Street, Stratford
 P: 203.378.9500 | F: 203.386.9057
 Mon-Thurs: 8am - 8pm | Fri: 8:30am - 5pm
 Sat: (Every Other) 8:30am - 4pm

Uprooted: Songs Inspired by Holocaust Poetry

by Sophia Colodner
Hopkins School graduate

For her senior project at Hopkins School, Sophia Colodner composed two songs to the lyrics of two poems by Franta Bass, a child imprisoned in Terezin Concentration Camp. The project was mentored by Ms. Schroth and Mr. Melchinger.



Terezin Concentration Camp, located in the Czech Republic, was active from 1940 until the end of the Holocaust. Over 30,000 of Terezin's inhabitants died due to labor, starvation, neglect and disease. Of the 15,000 children who passed through Terezin, less than 100 survived. I decided to focus on Terezin for my project due to the large volume of children who were there for extended periods of time.

Franta Bass, a young Jewish boy from Czechoslovakia, wrote poems in his diary during his time in Terezin. He

was born in Brno, Czechoslovakia, in 1930 and was deported to Terezin in 1941. Bass wrote a number of poems about his experiences as a child in Terezin, two of which, "Home" and "The Old House", were used as lyrics for my musical compositions.

To write contemporary musical compositions influenced by the words of child poets in Terezin, I did extensive research on Holocaust poetry and Jewish music composition. It was important for me to convey the emotions expressed by these children's words. By using dissonant melodies and minor chords, while also retaining the simplicity, my goal was to convey the nostalgia that Franta Bass felt for his happier past. I chose to compose music set for a treble choir.

Like Franta Bass, many victims used art as a way to express their emotions. Judaism has a rich musical tradition spanning thousands of years and many genres. For my compositions, I tried to emanate the emotions that victims of the Holocaust felt, in order to continue its remembrance.

As with many concentration camps, a sign on the front of the gate at Terezin read, "arbeit macht frei," or, "work will set you free." This was a lie. In 1944, Bass was transferred to Auschwitz, where he was murdered.

To listen to Sophia's compositions, visit jewishnewhaven.org/uprooted

Singles Mingle Events help Single Jews find Connections

Jewish? Single? Looking to connect with others in the area? Join other Jewish singles ages 40+ at Temple Beth David's next Singles Mingle event!

After completing the Yesod Community Leadership program through the Jewish Federation of Greater New Haven in 2017, Elyse Krantz began to look for ways to help area Jews connect beyond their own communities and synagogues.

"In our temple there are many social events for young families and fantastic adult learning opportunities, too. But, up until this point, there have been few options for adult singles looking to socialize."

After hearing that single adult members at Temple Beth David were interested in meeting other singles, Krantz coordinated the first Singles Mingle event in October 2018. With 19 people in attendance, the event was a great success. Many participants wanted to meet again. A second gathering was held on December 25 for - what else? - Chinese food!

To spread the word about the singles programs, Krantz has utilized Facebook and has also reached out to over a dozen Jewish centers and synagogues across central Connecticut.

"It has been heartening to see that congregations throughout the region are helping to advertise these events," said Krantz. "Synagogues are often so busy with their own programming, it can be challenging to find the time (or space) to share news about community-wide Jewish events; but the more we think of ourselves as a Connecticut Jewish community, and not just a Cheshire, or New Haven, or Hartford community, we can impact that many more people."

A summer gathering is planned at 2 p.m. on Sunday, July 28, at Farmington Mini Golf (1048 Farmington Ave. in Farmington) for an afternoon of mini golf, ice cream, and schmoozing. All are welcome to come and make new connections - bring a friend!

Curious about who participates in Singles Mingle events? "The majority of folks who attended our first three events were not affiliated with a synagogue, and their ages ranged from early 40s to folks in their 60s." Krantz added, "We are not trying to be J-Date. Our goal is to provide the opportunity for Jewish singles in the area: www.meetup.com/Greater-Hartford-New-Haven-Jewish-Singles-40-Meetup."

For more information or to RSVP for the July 28 mini golf event, please contact office@tbdcheshire.org or call Temple Beth David at (203) 272-0037. Interested individuals can also visit Temple Beth David's website at www.tbdcheshire.org or connect with a special Meetup.com group Krantz created just for Jewish singles in the area: www.meetup.com/Greater-Hartford-New-Haven-Jewish-Singles-40-Meetup.

SHORELINE HAPPENINGS

Fourteenth Shoreline Jewish Festival on Guilford Green



by Rabbi Yossi Yaffe
Chabad of the Shoreline

The 14th annual Shoreline Jewish Festival will take place Sunday, July 14 from 12-5 p.m. on the Guilford Green. The festival features various styles of Jewish music, traditional and Israeli fair food (all kosher), an art and book sale, and children's crafts and activities. This year's musical lineup features Klezmer, Jewish rock and Jazz bands.

Artists and artisans will be selling a variety of Judaica, jewelry, clothing and art work. Books, videos and games of Jewish interest, for both children and adults, will be available for sale. Festival-goers can choose from a variety of fair favorites, including hamburgers, hot dogs, falafel (an Israeli fried chickpea specialty), schwarma grilled chicken, potato knishes, homemade doughnuts, cotton candy, sno cones and more.



Children will enjoy an inflatable slide, obstacle course and bouncers. They can also try their hand at a variety of Jewish-themed arts & crafts projects.

Admission is free. Food, crafts, and vendor items are for sale. Mr. Boris Mizhen is the primary festival sponsor. Additional Sponsorship provided by Jewish Federation of Greater New Haven, Gladeview Rehab & Health Care In Old Saybrook "Right on the Water", Sound Spectrum Entertainment of Wallingford, Guilford Courier, and Cherry Hill Construction. For more information, visit www.shorelinejewishfestival.com. Artists can reserve a booth for the day for a fee of \$85. To help sponsor this unique event, or to reserve a booth, please contact Rabbi Yaffe at (203) 533-7495 or at chabad@shnet.net.

Temple Beth Tikvah Trip



Members of Temple Beth Tikvah visited Central Europe this past May. Here photographed at the Spanish Synagogue in Prague, they also visited Auschwitz and the JCC in Krakow.



Jewish Coalition for Literacy (JCL) impacts the lives of 300 children in New Haven public schools

"Being a JCL reading partner is the most rewarding volunteer work I've ever done. My sessions with my students are often the highlight of my week. I love being able to pick books that capture their imagination, hoping to spark a lifelong love of books. In addition to reading, we talk, play games, and draw pictures. Many of the kids lack significant one-on-one attention, so these sessions are a wonderful opportunity to engage with them and build positive relationships," Susan Epstein, JCL volunteer and steering committee chair, shared.

Interested volunteers are encouraged to contact Emily Kurz, JCC Group Program Manager at (203) 387-2424 ext. 306 or emilyk@jccnh.org



From left to right: Susan Epstein, Rona Leventhal, Emily Kurz

Madison Beach HOTEL
CURIO COLLECTION BY HILTON

© Rogers Photography | RogersPhoto.com

For more information on Weddings and Events for all seasons, please contact Libby Rutty.

94 WEST WHARF ROAD | MADISON, CT | 203.868.0943
MADISONBEACHHOTELWEDDINGS.COM

[f](#) [i](#) [t](#)

A special
thank you
to our newest
Corporate Sponsor!



WEST HAVEN & HARTFORD, CT
startireandwheels.com

TWO LOCATIONS:

40 Boston Post Road
West Haven,
CT, 06516
203-933-2886

888 Wethersfield Avenue
Hartford, CT 06114
860-296-9799

Increase your business' name-recognition in the community and make an impact by becoming a corporate sponsor.

Contact: Amy Holtz | Chief Development Officer
(203) 387-2424 x254 | aholtz@jewishnewhaven.org
jewishnewhaven.org/corporate-partnerships



Jewish Federation



Jewish Foundation



JCC

African American Educational Law

by Sydney Perry
President, JFACT (Jewish Federation Association of CT)

Bryan Stevenson, a gifted black attorney, founded the Equal Justice Initiative in Montgomery, Alabama, to defend the poor and wrongly condemned. He has said that he wants the U.S. to “face its history”, and recently opened the much praised Legacy Museum and a lynching memorial.

Stevenson recalls that on a trip to Berlin, Germany, he was struck by the density of markers, monuments and dedications to victims of the Holocaust. Likewise in Johannesburg, South Africa, where he visited the Apartheid Museum. In Kigali, Rwanda, there is a Genocide Memorial to those who were cruelly killed 25 years ago.

But in America, we haven't adequately recognized our history of enslavement of black people from 1619 to the Civil War and a legacy of inequality, separation and racial injustice ever since. We have neglected to teach our children—all our children—the history of slave trading, the Civil War, the aftermath of Reconstruction, Jim Crow, racial terror and the Civil Rights movement.

This year, Connecticut's Legislature is poised to rectify this by mandating the teaching of African American and Latino studies in our public high schools and developing an elective for credit within a few years.

The seven Jewish Federations in Connecticut (JFACT) were prominently involved last year, along with ADL and Voices for Hope, in the mandate requiring the teaching of Holocaust and Genocides. This year, under the leadership of JFACT Executive Director Michael Bloom, we have supported and advocated for a similar law to be passed for teaching African American and Latino history.

Recently, the Connecticut History museum hosted an exemplary exhibit, “Black Citizenship in the Age of Jim Crow”, curated by Irene Miller. Bloom immediately saw an opportunity to bring together the Jewish and African American communities in support of and advocating for this educational initiative. The Jewish Federations, Anti-Defamation League (ADL), CT. National Association for the Advancement of Colored

People (NAACP) and the Urban League of Southern Connecticut, sponsored an event for almost 200 attendees who stood in solidarity with furthering knowledge of this critically important mandate. In addition to learning of the painful history of bigotry, racism and tracing the roots of injustice, the curriculum will share the story of survival, resistance, courage, and the contributions of African Americans to our nation.

In his new book “Stony the Road”, Henry Louis Gates writes, “few American historical periods are more relevant to understanding our contemporary racial politics than Reconstruction.” As Ida B. Wells, a black journalist and co-founder of the NAACP, once opined, “the way to right wrongs is to turn the light of truth upon them.”



Left to Right: David Slossberg, President CT ADL; Irene Frank, CT historical museum, COO; Valerie Shultz-Wilson, President, Urban League of Southern CT; Dr. Benjamin Foster, Jr; Sydney Perry, President, JFACT; Scot X. Esdaile, President, NAACP, CT; Michael Bloom, Executive Director, JFACT; Howard Sovronsky, CEO, Jewish Federation of Greater Hartford; Bobby Gibson, CT State Rep., Bloomfield, Windsor; Steve Ginsburg, Exec Director, CT ADL

UPDATE: As of June 4, the bill was passed unanimously by the Senate and was signed by governor Ned Lamont, who commented on the state's need to better diversify the classrooms, noting that while 40% of Connecticut's school population are children of color, only 8.7% of the state's teachers are minorities. This new bill requires Connecticut schools offer an elective on African American and Latino history, and courses will be required by the 2022-2023 school year. The Urban League of Southern Connecticut, which aims to “enable African Americans and other minority groups to secure and sustain economic self-reliance,” has honored Michael Bloom, executive director of JFACT, for his advocacy.

New Jewish Holiday Calendar Bridges Jewish Community and Secular Schools

by Talya Hyman
Shalom New Haven Intern

The Jewish Community Relations Council (JCRC), the public affairs arm of the Jewish Federation of Greater New Haven, has created a five-year calendar of major Jewish holidays. The calendar is designed to encourage public awareness of religious Jewish observances, especially within nonreligious public schools. The goal is for these schools to avoid the scheduling of special academic events, such as examinations, ceremonies, meetings and field trips on the same dates as significant Jewish holidays and observances.

The Jewish holidays are laid out in a hard-copy pamphlet for the 2019-2024 calendar years, allowing for a complete and clear view of all relevant dates. The calendar also provides succinct descriptions of the holidays and their significance to Jewish practice.



Additionally, the most widely observed holidays and days on which most Jewish students and faculty will be absent are clearly indicated with asterisks.

Through the usage of the holiday calendar, secular schools will become better equipped in catering to the practices of its Jewish population, thereby creating and ultimately promoting a greater sense of respect, sensitivity, and inclusion.

JCRC's mission is to represent the Jewish community's interests and concerns to public officials and agencies, the media and the community at large. It promotes tikkun olam, the repair of the world, through advocacy and civil action, and fosters relationships among people of all faiths and cultures.

To ensure that a calendar is made available to your child's school, contact JCRC Director Eliraz Shifman Berman at (203) 387-2424 x308 or

BEKI SHOW: Kassap

“On My Mind: One Jewish Woman's view,” mixed media works by Karen Kassap, opened June 20 at Beth El-Keser Israel.

Kassap, who studied mixed media collage with Debi Pendell, says she enjoys this form of expression “because it lays apparent the dichotomy between the completed work and the many layers of paint and paper that form the foundation of the piece. The underlying support for my collages can seem chaotic and wild, and yet my goal as



an artist is to draw the viewer in with something that is viscerally attractive, cohesive and sometimes quiet.”

A conversation with the artist will be held Saturday, August 17 at 12:45 p.m., following the weekly services and luncheon; Sabbath rules will be observed. The exhibition ends August 20.

The Towers Vision for The Future

THE TOWERS
AT TOWER LANE

A warm and vibrant senior community, infused with Jewish values, where people live their best lives.

THE TOWERS AT TOWER LANE | 18 Tower Lane, New Haven, CT 06519 | 203-772-1816 | www.towerone.org



Uzbekistan EXCURSION



March 2020



Experience the thrill of history and the story of people in this truly amazing part of the world.

Uzbekistan is the proud home to a fascinating architecture and ancient cities, all deeply infused with the history of the Silk Road. According to legend, the Jewish community in Uzbekistan was established more than 2,000 years ago after the destruction of the First Temple. The first documented Jewish presence in the region dates back to the 4th century C.E.

Central Asia's biggest draw and most impressive showstopper. You will:

- Visit exotic bazaars, traditional tea houses and ancient villages
- Discover cultural treasures of Central Asia: magnificent synagogues and ancient palaces
- Meet and interact with hospitable Central Asians including a home hospitality Shabbat dinner with a local Jewish family
- Enjoy traditional music, dance and fashion shows
- Experience Kabbat Shabbat at a Bukharan Synagogue
- Attend a briefing with the Israeli Ambassador to Uzbekistan

\$4,400 per person
double occupancy
\$550 single supplement
(does not include international airfare)

More details at jewishnewhaven.org/excursion



Foundation News

Jewish Foundation 2019-2020 Scholarship Opportunities

SYNAGOGUE SCHOOL SCHOLARSHIPS:
The Jewish Foundation offers needs-based assistance for Greater New Haven synagogue schools. The deadline for the online application is October 19, 2019

COLLEGE SCHOLARSHIPS:
There are needs-based as well as needs-blind scholarships for high school seniors from Jewish households. All applications must be completed online by May 15. All applications are confidential and anonymously reviewed. Awards range from \$500 - \$3,000. This is a competitive application process and often times there are more applicants than money available. Therefore, awards are based on the strength of the application. See online for application requirements for individual scholarships. College Scholarships: Mary Taylor Friedler Memorial Scholarship Fund, Stuart J. Drell Scholarship Fund, Emma Kohn Podoloff Scholarship Fund of the

National Council of Jewish Women's Greater New Haven Section.

ONE HAPPY CAMPER:
The Jewish Foundation offers: Needs-blind incentive grants for first-time campers to Jewish overnight camp as well as: Needs-based aid for first time and returning campers. There are over 195 traditional and specialty Jewish overnight camps from which to choose.

ISRAEL EXPERIENCE SCHOLARSHIPS:
The Jewish Foundation Israel Experience Scholarship Program affords local Jewish students ages 14-19 the opportunity to participate in an Israel experience to enrich their Jewish education and reinforce their Jewish identity. The Israel Experience Scholarships are needs-blind.

The scholarships are for both short-term (minimum of three-week program) and long-term organized Israel educational programs. For 2020 summer trips, appli-

cations are due by March 9, 2020. For the 2020 gap or academic year programs, applications are due by May 15, 2020.

This is a competitive application process and often there are more applicants than money available. Therefore, awards are based on the strength of the application. An essay and two recommendations are required. All applications are confidential and anonymously reviewed by the Israel Experience Scholarship committee. Israel Scholarships: Bloch Family Fund for Israel Travel by Congregation Or Shalom Youth, Esther Gold Milikowsky-Copelon Fund in memory of Matthew Milikowsky, for Teen Travel to Israel, Marvin S. Pisetsky Israel Scholarship Endowment Fund, Arthur Spiegel Israel Scholarship Fund, and Lawrence & Florence Winer Israel Scholarship Fund

For more information and applications, visit jewishnewhaven.org/scholarships

What will your Jewish Legacy be?



The Auerbachs are Leaving a Legacy for Jewish Family Service of Greater New Haven

"Jewish Family Service is a great and welcoming organization. Their Food4Kids programs, their adoption and foster care programs, are part of the great work they do. We have always been involved in the Jewish community and we have both served on the JFS Board. This is a confirmation of our dedication to the community and all things Jewish."

Photo, Hillel and Sara Ann Auerbach with their granddaughter, Eleanor



newhavenjewishfoundation.org jewishlegacynewhaven.org

For more information about Create A Jewish Legacy, contact Lisa Stanger, (203) 387-2424 x382, lstanger@jewishnewhaven.org



Welcome to America

There is a mezuzah on Winnie the Pooh's door

by Yelena Gerovich
New American Acculturation Coordinator

Milne's Winnie-the-Pooh stories have delighted youngsters for over 90 years. These classic children's stories portray Christopher Robin and his assortment of animal friends, including a bear named Winnie the Pooh, who, with their different strengths and weaknesses, help each other out through all kinds of mishaps. Saul Blinkoff, who animated the 2004 full-length cartoon version of Pooh for Disney, placed a mezuzah on Pooh's doorpost and on a book in the opening scene, he put the Hebrew letters נ, ו and ד, spelling out 'Hashem.' Showcasing one's personality within a film project is not uncommon, but Blinkoff's decision to put his Jewish identity on display is a big reason why he was chosen to be a Jew in the City's Orthodox Jewish All-Star in 2014.

The United States established Friendship Day on the first Sunday in August in 1935. For Friendship Day in 1998, Winnie the Pooh was chosen as the Ambassador of Friendship at the United Nations by Nane Annan, the wife of then UN Secretary-General, Kofi Annan. One of Kofi Annan's achievements was making the UN a tiny bit less anti-Israel. "We will remember him as having been very active in the international arena and as someone who fought anti-Semitism and Holocaust denial," Prime Minister Benjamin Netanyahu said in a statement, sending Israel's condolences to Annan's family when he passed away.

The message of the Winnie-the-Pooh stories is fundamentally Jewish — a group of closely knit people helping each other overcome any problem or obstacle, and helping each other become who they are meant to be. With the support from JFACT (Jewish Federations Association of Connecticut), the Jewish Federation and Foundation of Greater New Haven, the New American Acculturation Program offered a busy schedule of educational programs, including speakers from all around the world and modern technology training. Since seniors often have difficulty using modern technology (cell phones, computers, library websites, etc.), there were several workshops to train them to use these devices and access web-based resources.

Members of the Russian speaking community sometimes wonder what they would have done without community support. American Jews have been the pillar Russian speaking Jews have leaned on for many years. There aren't enough words for Jews from the former Soviet Union to express just how much the Jewish Federation and Jewish community mean to them, so we'll just say this: Happy Friendship Day! Celebrate it on Sunday, August 4.

For more information about the New American Acculturation Program, including sponsorships of specific program, contact Yelena Gerovich at (203) 387-2424 x321, or email ygerovich@jewishnewhaven.org.

Мезуза на двери Винни-Пуха

В 1935 году Соединенные Штаты установили День Дружбы в первое воскресенье августа. В 1998 году Винни-Пух был избран послом дружбы от Организации Объединенных Наций по предложению Нане Аннан, жены тогдашнего Генерального секретаря ООН Кофи Аннана. Генерал Кофи Аннан был дипломатом, который сделал ООН чуть-чуть менее антиизраильским. «Мы будем помнить, что он был очень активным на международной арене, он боролся с антисемитизмом и отрицанием Холокоста», - заявил премьер-министр Нетаньяху в своем заявлении, направив соболезнования от Израиля семье Аннана, когда он скончался.

Истории Милна о Винни-Пухе восхищают молодежь уже более 90 лет. Сол Блинкофф, который анимировал полнометражную мультипликационную версию Винни-Пуха для Диснея в 2004 году, поместил скрытые символы в декорации. В одной из сцен, на двери Винни Пуха он нарисовал мезузу, а в книге, в начале сцены, расположил еврейские буквы гей, шин и мем, что обозначает «גשן» (га-Шем). Решение Блинкоффа жить в соответствии с его еврейской идентичностью стало решающей причиной, почему его выбрали представлять евреев в городском ортодоксальном проекте «AllStars» в 2014 году.

Классические детские истории Милна рассказывают о приключениях мальчика Кристофера Робина и его друзей-животных, в том числе медведя по имени Винни-Пух, про их веселые выходки и удивительную способность попадать в какие-нибудь истории, из которых порой очень трудно выбраться. Находчивость и сообразительность помогают друзьям справляться с трудностями и благодаря своим сильным и слабым сторонам, помогают друг другу во всевозможных сложных ситуациях. Очень еврейский образ жизни - помогать друг другу.

В течение последних 40 лет наша община оказывала огромную помощь евреям из бывшего Советского Союза. NewAmericanAcculturation организовала разнообразный спектр образовательных программ, в том числе выступления интересных собеседников со всего мира и обучение современным технологиям. Американские евреи были опорой для русскоязычных евреев все эти годы. Выходцам из бывшего Советского Союза недостаточно слов, чтобы выразить, как много значат для них Еврейская Федерация и еврейская община, поэтому мы просто скажем следующее: С Днем Дружбы! И давайте праздновать этот праздник 4 августа.

Для получения дополнительной информации о программе NewAmericanAcculturation, включая спонсорство конкретной программы, свяжитесь с Еленой Герович по тел. (203) 387-2424 x321 или по электронной почте ygerovich@jewishnewhaven.org.

Family Fun Day at JCC

by Monique Fontes
Shalom New Haven Staff

On June 2, our campus was buzzing with activity for Family Fun Day at the J, featuring Touch-a-Truck. This annual event enjoyed a tremendous turnout while delivering wonder and whimsy to all ages. Whether you came to flash the lights of your favorite emergency vehicle,



play a game of giant Jenga, or craft a spin art masterpiece, there was something for everyone. Families nibbled on hot dogs, horns blared, and children laughed in delight. We have our generous sponsors to thank for the great time had by all. A very sincere thank you to Baybrook Remodeling, New England Silica, B&B Transportation, OBGYN Menopause Physicians P.C., and Big Smiles for

not only supporting us, but for bolstering the community at large. We would also like to recognize everyone who showed their support by attending this wonderful event. We appreciate you and hope to see you all again next year.

Shabbat Shalom
From Big Y!

Stop by These Big Y Locations:
830 Boston Post Rd., Guilford
22 Spencer Plain Rd., Old Saybrook
772 North Main St., West Hartford
For All of Your Shabbat & Holiday Needs!

Shabbat Shalom!

Visit bigy.com

Our Community, Our Lives: How Do They Relate?



by Jeffrey Hoos
Jewish Federation of Greater New Haven President

Our community is important to all of us. We cannot survive by ourselves. It would be pretty lonely and most of us would be very unhappy. Just as we have to nurture our immediate family, we have take care of and nurture our Jewish family as well.

There are times that I have to be reminded and revisit why community work is so important. Why do we need community and why do we have to help the less fortunate in our community? There is a poem by John Steinbeck I would like to share. I was a zoology major before going to dental school, so to my friends who studied the written word (you know who you are) please go easy on me with my interpretation.

by John Steinbeck
"THE END OF LIFE IS NOT SO TERRIBLY FAR AWAY (we are all mortal and life happens very very fast)
YOU CAN SEE IT THE WAY YOU SEE THE FINISHING LINE (you know the end is coming but there is more work to do)
WHEN YOU COME INTO THE STRETCH AND YOUR MIND SAYS, HAVE I WORKED ENOUGH?
HAVE I EATEN ENOUGH?
HAVE I LOVED ENOUGH?
(towards the end of you life, you wonder, did I do enough for my work, my self and for my family and there may not be enough time because the finishing line is coming up)
ALL OF THESE, OF COURSE, ARE THE FOUNDATIONS OF MAN'S GREATEST CURSE.
AND PERHAPS HIS GREATEST GLORY.
(the curse of time and yet we know we have to work hard)
WHAT HAS MY LIFE MEANT SO FAR?
(looking back what have I done to give my life meaning)
WHAT CAN IT MEAN IN THE TIME LEFT TO ME?
AND NOW WE'RE COMING TO THE WICKED POISON DART.
(we have to face the real truth if we can tell ourselves the truth)
WHAT HAVE I CONTRIBUTED IN THE GREAT LEDGER?
(I had the chance and truth be told, what did I do)
WHAT AM I WORTH?
(What have I done that is worthwhile)
AND THIS ISN'T VANITY OR AMBITION.
(this is needs to be introspective and is for a person to decide for themselves personally)
MEN SEEM TO BE BORN WITH A DEBT THEY CAN NEVER PAY NO MATTER HOW HARD THEY TRY.
(Steinbeck wants to tell us what we all know.....we have a debt to many people and some people we can not remember and no matter what we do, we can not thank them enough or repay them)
IT PILES UP AHEAD OF THEM.
(before you know it, time runs out and there are so many we have not thanked along the way we are not in this community alone and we need to help each other to survive and move to a better place)
MAN OWES SOMETHING TO MAN.
IF HE IGNORES THE DEBT IT POISONS HIM, AND IF HE TRIES TO MAKE PAYMENTS THE DEBT ONLY INCREASES, AND THE QUALITY OF HIS GIFT: IS THE MEASURE OF THE MAN"
(if a person does not understand they have a debt or an obligation to help others, they become isolated and this is destructive. The harder the person tries to make community better, we realize there is so much to do. BUT the harder we try and more we do.....That is the reward and one can look back and say: "we tried to make it better and that is the reward.) It is not our job to finish the work, it is our job to continue the work of others and build upon it.

The Steinbeck poem is powerful in so many ways. But how does it relate to our community and to ourselves? I have come to understand that our Jewish community is very much like our direct family. We work hard, and we want so much for our family but unless we expand our thought process we become very small minded. We must work together as a family unit because we can do so much more.

We are seeing terrible things happen in the world and be are seeing stresses in our community that no one wants to face.Can we do it alone, and what debt do we have to our community that has nurtured us for such a long time?

Please think about what you can do for our community. You are part of our community effort. Our Community and Our Lives: How do they relate?

The answer is so easy.....**WE ARE TOGETHER MAKING EACH OTHER STRONGER.**
HAVE A WONDERFUL SUMMER, Dr. Jeffrey Hoos

ROBERT E. SHURE, INC.
FUNERAL HOME

Dedicated to the Dignity and Respect of Tradition

543 George Street, New Haven, CT 06511

Robert E. Shure 203-562-8244 James M. Shure
Founder shurefuneralhome.com President

Liverpool PRODUCTIONS

CALL CHARLES!!! 203.795.4737
DJ/Music/Entertainment for any Occasion
Proud to be Entertaining the Community Since 1978!

New J. New day.

On Your Mark, Get Set, Bagel Run!

by Monique Fontes
Shalom New Haven Staff

The 9th Annual Murray Lender 5K Bagel Run sponsored by Titan Energy will be held on Sunday, September 15, 2019 at the JCC of Greater New Haven. Enjoy music, professional race timing, post-event festivities, and fun for runners and walkers of all ages.

The 5K starts at 9:30 a.m. on a USATF Certified Course. We will host a 2-mile Family Fitness Walk that is suitable for strollers and great for parent-child runs.

The day kicks off at 8:45 a.m. with a Kids Fun Run! At the sound of a starting pistol, our mini runners will be unleashed for an uphill dash with Benny, our famous Bagel-man mascot. This is a great opportunity to share a fun and exciting day of movement with your children and to inspire them to cultivate their own love of fitness. The JCC is offering free babysitting services during all races.

The Bagel Run, held annually since 2011, was dedicated and renamed The Murray Lender 5K Bagel Run the following year. Lender was not only a leader in the community, planning many events for communal organizations and causes over the years, but he was also an ardent devotee and committed JCC member. It was his commitment to creating a stronger, more united community that became the driving force in creating the JCC's 360 Amity Road Campus, together with David Beckerman.

While the rest of the world knows him and his brother Marvin for their bagels, the Murray Lender 5K Bagel Run now pays homage to Murray's generous spirit, love for the community, and his vision for a brighter tomorrow. In this evocation of Lender, we celebrate community, wellness, and appreciation of the values the JCC stands for.

Stick around after the race for a Bagel Run block party extravaganza featuring special guest Pygmy goats and a live band pumping out your favorite hits. Enjoy bagels and cream cheese from Katz's Deli, delicious goodies handmade by our own JCC members and staff, and the crowd favorite Sklar family apple cake! There will be free pre-and post-run massages and trainer-assisted stretching.

At 10:30 a.m. the celebration continues as we award participants with medals made from real bagels. Find out your race time, get your face painted, and take photos with Benny the Bagel. This is a great opportunity to learn about your community and upcoming JCC programs, connect with old and new friends alike, and, of course, eat more bagels!

Register in advance at jccnh.org/registration-bagel-run for only \$25 and receive a free t-shirt, or register on the day of the race for \$30. The Kids Fun Run is free. To become a sponsor, visit www.jccnh.org/bagelrunsponsor. For more information, visit jccnh.org/bagel-run or contact Susan Donovan at susand@jccnh.org or (203) 387-2424 x 265.

Pilates Studio Expanded at the JCC

The Pilates studio, which opened at the JCC of Greater New Haven this past winter, is now expanding. "Pilates is such a beneficial method of strengthening your core and improving overall wellness that we are not surprised to see more and more JCC members adding it to their basic routines," says Susan Donovan, Director of Health & Wellness Services at the JCC.

The existing pair of Balanced Body™ Apparatus, including the Reformer and Trap Table (called the Cadillac) - are now joined by the Pilates Ladder Barrel for core strength and flexibility exercises. "The Pilates Ladder Barrel helps you isolate deep postural muscles and challenges the body in all planes of movement," says Christina Rodino. "It's a well-known favorite among Pilates Trainers and enthusiasts," adds Suzanne Leonards. Both Rodino and Leonards are certified Pilates trainers at the JCC.

Pilates exercise starts with the core of your body, with full breaths refreshing your cells, with your heart and circulatory system pumping fresh blood into your tissues, and with training the deep muscles of your abdomen, back and pelvis to support your spine and provide stability in your pelvis and shoulders as you move. Practiced regularly,

Pilates yields numerous benefits: increased lung capacity and circulation through deep, controlled breathing, strength and flexibility, particularly of the abdomen and back muscles, and coordination - both muscular and mental. Many experience positive body awareness for the first time. With improved posture, balance and control of the body, many find that benefits from Pilates spill over into other areas of one's life.

The expansion in the Pilates offering takes the studio to a new location in the fitness area. Come check it out and schedule an intro session, free of charge to JCC members. Contact Susan Donovan at susand@jccnh.org for more info.



Balanced Body® Pilates Ladder Barrel for core strength and flexibility exercises. The barrel connects to the ladder by a sliding base that adjusts to accommodate different torso sizes and leg lengths.

JCARR's Generosity: A Family's Story

by MiriYam Judd
Shalom New Haven Intern

It's easy to take the small things for granted. Driving to school. Going to work. Talking to your friends. Raising a family. These are things that come naturally to us; it almost seems like nobody would not be able to do them.

But not everyone has the same opportunities that we do. Refugee families escaping war torn countries don't, and some of those families are right here, living among us as members of our own community. Since 2016, JCARR (Jewish Community Alliance for Refugee Resettlement) has helped resettle four families in search of a better and safer life.

The third family arrived in New Haven on January 26, 2017, and JCARR stepped in to make their transition to American life as seamless as possible. JCARR put them up in an apartment, paying six months' rent until the parents were able to find jobs of their own, and managed to get

their 10-year-old son with special needs a spot at ACES, his first time ever attending school. The boy's education was the main reason they came to the U.S. The husband arrived in the states with a very limited knowledge of English, but, because he worked every day, he wasn't able to take classes to learn. Since he didn't know the language, getting his driver's license was difficult, but JCARR volunteers drove him from Hamden to Trumbull every day for work. When he did get his license, JCARR provided him with a car to drive himself.

Since arriving, the family has begun paving their own path. After being pushed by community members who loved her food, the mother opened her own catering business, selling to local stores like Whitneyville Market. She became certified to serve and sell food after just one week of studying. The family's 12-year-old daughter excels in school; just this past year, she received awards in math, science, and social studies, as well as being named student of the month. She



Father sits with his youngest daughter and oldest son. The boy's special needs played a major role in their decision to come to America.

was able to further develop her love for art, a longtime passion of hers she's only recently been able to pursue, by designing the website and business cards for her mother's catering services.

JCARR's generosity continues to change lives, this being just one example of the kindness and magnanimity they exhibit

daily. While the family hopes that one day the war in their country ends and they can return home, they have never, not even for a second, doubted their decision to come here. "I feel safe here. My children have a future here. And it is all because of JCARR; they gave us everything."

If you have an event that needs catering, please consider Khadija's Sweets. You can email her at khadijasweetsetc@gmail.com, call (203) 600-1748, or visit her website: khadijasweetsetc.wixsite.com/aleppo/contact.

JCARR is committed to helping our families become self-sufficient. To make an online donation, visit jewishnewhaven.org/refugee-resettlement/give or mail a check payable to The Jewish Federation, with JCARR in the memo line, to The Jewish Federation of Greater New Haven, 360 Amity Road, Woodbridge, 06525; Attention: Amy Holtz. We greatly appreciate your generous support.

The Crown Market Is Back In New Haven! Well, sort of...

We've missed you, too!

We want to help keep Greater New Haven kosher!



We really deliver!

860.236.1965

www.thecrownmarket.com

Blending tradition and excellence since 1940.

HK supervision only applies to the bakery, 5 o'clock shop, deli, butcher shop, grab-n-go, sushi, pizza and catering departments.

Weekly Deliveries
To The Greater New Haven Area!

Our Services Include:

- Freshly-Butchered Meats And Poultry
- Gourmet Prepared Foods
- Old Fashioned Deli & Appetizing
- Freshly Baked Bagels, Challah, Breads & Desserts
- Deli Salads & Side Dishes



Welcoming Our New Israeli Emmissaries

by Amalya Brownstein
Young Emmissary Coordinator,
Jewish Federation of Greater New Haven

It is with great pleasure that I introduce Tal Azizi (right) and Li-on Avraham (left), our newest Young Emmissaries from Israel. To those unfamiliar with the program, this is a ten-month-long volunteer service experience that is jointly sponsored by the Jewish Federation of Greater New Haven, the Jewish Agency for Israel (JAFI) and the Southern New England Consortium of Jewish Federations (SNEC). The Young Emmissaries are Israeli high school graduates who choose to defer their army service to serve as young ambassadors for Israel. The program aims to strengthen the ties to Israel by building personal connections between Jewish American and Israeli communities. The emmissaries work as Israeli specialists, leading a variety of activities with spirit and creativity. They work with a wide variety of organizations and a diverse array of community members of all ages.

Li-on lives with her mom in Barak, a moshav in northern Israel near Afula. Her majors in high school were psychology, sociology and theater. She likes to read a lot and



explore nature. In her free time, you can find her hanging out with friends and her little cousins. Last summer, Li-on was a counselor for a month at the JCC of Greater New Haven summer camp.

Tal lives in Rishon Letzion with his parents, twin sister and younger brother. His major subjects in high school were biology and chemistry, which he chose because

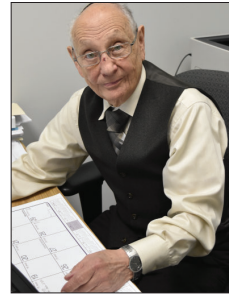
he wants to understand the environment better. Tal and his family like to travel the world. In his spare time, he loves to listen to music, play guitar and read. He also likes to spend time with friends.

Both Tal and Li-on have experience in leadership through their school, youth movement, and other programs. They look forward to spreading their love of Israel around our community.

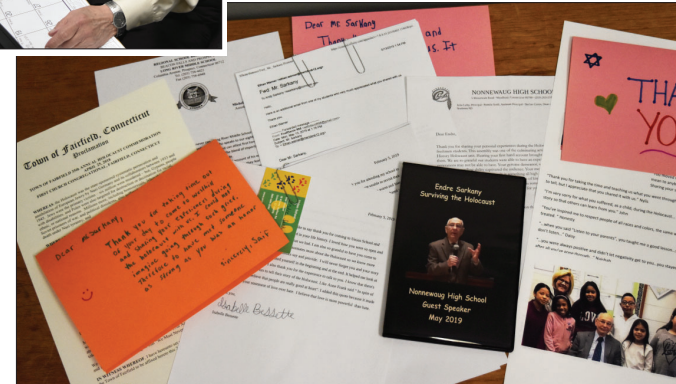
As we wish success to the wonderful Ziv Peleg and Noa Saitowitz, our departing Young Emmissaries, we look forward to welcoming our new Young Emmissaries into our community. Li-on and Tal will be hosted by local families from the Greater New Haven area. If you are interested in hosting, please contact Amalya at amalyab@jccnh.org.

Please help us in extending a warm welcome to our new emmissaries who will be arriving on August 28!

Thank You Andy



Endre (Andy) Sarkany augments his role as Manager of Donor and Campaign Services at the Jewish Federation of Greater New Haven by presenting talks around the state to schools, libraries, senior centers and more. As a Holocaust survivor, Andy has a unique perspective on the role that today's society can take to prevent bigotry and hate. He has given over 85 presentations during the current scholastic year. Pictured below: the myriad of gifts, letters, plaques, and notes of appreciation Andy gets on a weekly basis. Audiences love him.



Save the Date

 **Jewish Federation** OF GREATER NEW HAVEN | Women's Philanthropy

 **Hearts of Hope**
creating hope...one heart at a time

Women's Philanthropy & Hearts of Hope

"PAINTING WITH A PURPOSE"
AN INTERGENERATIONAL EVENT

Bring your daughters, moms & friends! (min. age 12)
WATCH FOR MORE DETAILS @ jewishnewhaven.org

Tuesday, September 24 | 7 p.m.
Beckerman Lender Jewish Community Building,
360 Amity Road, Woodbridge

Questions? Contact Amy Holtz (203) 387-2424 x254

Register your child today for their BEST SUMMER EVER!

 **JCC Day Camps** | 360 Amity Road Woodbridge, CT

FOR AGES 4-15, ACTIVITIES INCLUDE:

- Full-Day Program • Day & Overnight Trips
- Daily Swim For All & Lessons Through Grade 5
- Sports • Music • Drama • Dance
- Rock Wall Climbing • MakerSpace • Arts & Crafts • Cooking
- Nature • Archery (Grades 2-9) • Friday Oneg & Talent Show
- Community Service • Transportation Included From Centralized Locations

CAMP DATES & HOURS: June 24 - August 9 **S'MORE CAMP:** August 12 - 23
Monday - Friday | 9 a.m. - 4 p.m. Before/After Camp options available.

For more information, contact Camp Director Debra Kirschner at summercamp@jccnh.org, (203) 387-2424 x253 • jccnh.org/camp



Murray Lender

5K BAGEL RUN

FREE KIDS RACE • 2 MILE FAMILY FIT WALK

- Trainer Assisted Stretching
- Free Massage
- Plenty Of Bagels & Great Food
- Other Family Events
- USATF Certified Course

Sunday, September 15, 2019
JCC of Greater New Haven
360 Amity Road, Woodbridge, CT 06525

8:45: Kids Fun Run
9:30: Race & Walk Start
10:30: Bagel Reception & Awards

For more information contact Susan Donovan
203-387-2424 x265 | susand@jccnh.org
Register at: jccnh.org/events

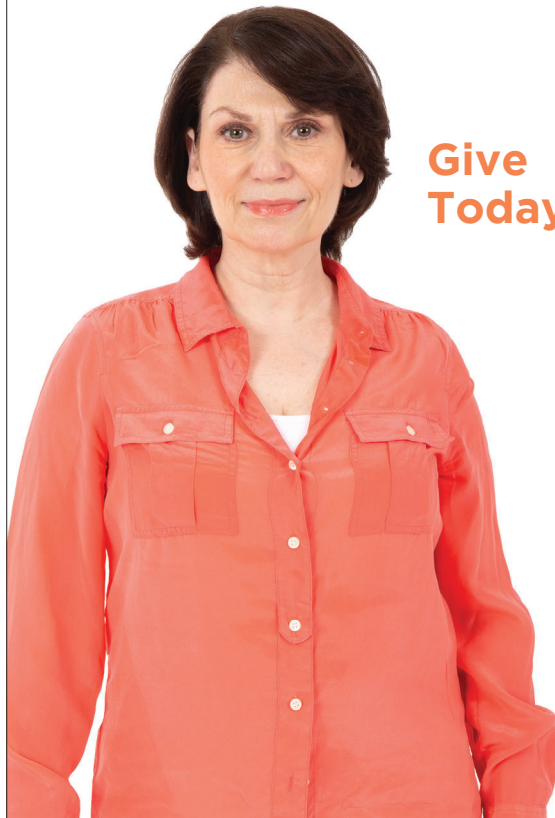
Presented by **TITAN ENERGY**
Creative energy solutions



IT ALL STARTS WITH YOU

I open the doors to learning.

Besides my family, what's most important to me? Judaism and Jewish learning — for any child, any family who wants it. Jewish education encompasses our values, culture and heritage. Without this knowledge, we can't build a future.



Give Today.



Contact: Amy Holtz, Chief Development Officer
(203) 387-2424, x254 | aholtz@jewishnewhaven.org

jewishnewhaven.org/give

Changing Lives Through the Inclusion Program

by MiriYam Judd
Shalom New Haven Intern



If you walk the halls of the JCC regularly, you come to learn who's who. You recognize people that work in the café, at the front desk, or even behind the scenes, in different offices scattered throughout the building.

Recently, there have been new faces added to the mix.

This past year, the JCC of Greater New Haven served as a job training site for students from Chapel Haven Schleifer Center, a residential school and independent living community for adults with cognitive disabilities. The Inclusion Program, run by JCC's Group Program Manager Emily Kurz, partners with Chapel Haven, to have students come to the JCC and intern in departments like facilities and marketing.

Robbie Marcus is a member of the inclusion program. Twenty-five years old, this is Robbie's third job, previously having worked at Walgreens and as a camp counselor. When the opportunity arose for him to begin at the JCC, he knew exactly what he wanted to do. "He's a problem solver," Kurz said, "so a job in facilities fit perfectly."

Robbie's supervisor was Chris Serio, facilities manager at the JCC. "The relationship between Robbie and Chris was indescribable," Kurz explained. Paul, Robbie's father, couldn't agree more. "Chris was spectacular. He had a perfect balance of making sure Robbie delivered on his duties while also understanding how a person with special needs works."

Robbie's job was to pioneer a "preventative maintenance" program: instead of waiting for something to go wrong, Robbie performed weekly inspections, trying to catch a problem before it became one. Going around the building with a checklist, he noted when he saw something that wasn't right.

Soon, the check list became obsolete. "He asked me, 'if I find something that's not on the checklist, can I still tell you it needs fixing?'" Chris said. Kurz noted how much maintenance improved with Robbie working. Light bulbs were changed more often, expired fire extinguishers replaced, alarm systems fixed, and sagging ceiling tiles removed.

Chris explained that Robbie didn't need much more help than anyone else might. "The knowledge was all there," he said. "The accommodation part was more along the lines of writing and carrying things, so we found ways to make it easier so he wouldn't get frustrated." With limited use of his arms, carrying a clipboard was difficult. Chris and Kaitlin Salisbury, Robbie's aid from Chapel Haven, came up with an alternative solution: Kaitlin followed Robbie on his inspections and wrote notes when he told her to. Chris said that when Robbie comes back to the JCC, he'll look into getting him an iPad, making him even more independent.

Watching Robbie succeed in the program has been an incredible experience for anyone who's met him. "You're only as happy as your least happy kid," Robbie's dad said. "All you can hope for your kids is that they find something they love that they're good at. I'm happy he's found that."

And Robbie? He couldn't have had more fun if he'd tried. "I loved working with Chris, and I've made so many friends at the JCC," he said, "everyone is so nice to me." He hopes to come back in the fall and volunteer.

ROCK TO ROCK: Environmentalism Meets Multifaith

by Derek Holodak
Program and Development Associate, Jewish Federation of Greater New Haven



On Sunday, April 28, the Jewish Federation of Greater New Haven's NextDor group partnered with students and professionals from the Slifka Center, Muslim Student Association at Yale, and Yale Divinity School, as well as community members from the Moishe Pod, and the "Jews in New Haven" (formerly "Jewish Graduates and Professionals at Yale") group to host a multifaith hike, bike ride and "picnic" in support of the annual Rock to Rock Earth Day Ride.

Initially organized as an unofficial alternative for observant Jews who couldn't participate in the official ride on Saturday, organizer Josh Weinstein decided to open it up

to members of the Muslim and Christian faith communities after the massacre in Christchurch.

The 13 participants, representing seven different religious groups across Greater New Haven, enjoyed a picnic lunch at the Slifka Center after the hike/ride and discussed Jewish, Muslim

and Christian approaches to environmentalism and actions that the respective faith communities could take to collectively minimize our environmental impact. Next year, the groups will be partnering with the Rock to Rock organizers to provide an official multifaith component on the Sunday after the main ride.

JFS Spring Celebration was a Success

On June 13 at The Towers at Tower Lane, Jewish Family Service (JFS) of Greater New Haven honored past presidents as the agency expands services to ageing adults.



From left to right front row: Charlotte Brenner, Herbert Newman, Carol Robbins, Rosalyn Sperling, Betsy Fiske, Ivan Katz; Back row: JFS CEO, Amy Rashba; JFS Board president, Linda Caplan; Mary Lou Winnick, Steve Jacobs, Peter Zackin, Jack Fast, Cindy Gerber and Rick Epstein

JCC's FREE summer music series



abel
CATERERS, INC.
The Kosher Catering Experts

- all ages
- live music
- byob
- kosher bbq for purchase

www.abelcaterers.com

5-8 p.m. jccnh.org

Join us on the Terrace at 360 Amity Road for the return of our FREE summer music series! The tunes kick off at 5 PM and are sure to have you dancing to the beats! Kosher BBQ from Abel's Catering will be available for purchase. Event is BYOB.



AUGUST 29 To be announced!
Watch for upcoming announcements!

JCC, 360 Amity Road, Woodbridge
Contact: Derek Holodak
dholodak@jewishnewhaven.org
(203) 387-2424 x217

New Haven Mikvah Reopens After Extensive Renovations

by Rabbi Fred Hyman, Ed. D
The Westville Synagogue, New Haven

After months of hard work, the New Haven Mikvah has re-opened. As the final preparations were being made, there was great excitement. Tova Emanuel Hyman, principal officer of the mikvah, stated, "We are thrilled that the mikvah is operational once again to serve the community. We are grateful for the determined efforts of the committee to see the project through."

A mikvah is a bath or pool of water used for ritual immersion to achieve spiritual purity. According to Jewish tradition, ritual immersion is required for certain life-cycle events, is encouraged as preparation for holy days, and promotes the sanctity of marital relations, called Taharat Hamishpachah, or Family Purity.

Sharon Reinhart, a key committee member, explained how community members have anticipated the re-opening: "I have been receiving many calls asking when the mikvah will be able to be used again."

The New Haven Mikvah, at 86 Hubinger St., was built in 1976 and has been a source of religious sanctity since its inception. In the 1990s, it was renovated and beautified with new bathrooms and preparation rooms.

Over a year ago, the main immersion pool began to leak.



Much effort was expended to locate the problem but a solution was not found. The secondary pool was used exclusively and the regular functioning of the mikvah was maintained. In the winter, however, the secondary pool also began to leak and repair proved too costly. As a result, the mikvah had to be shut down.

In the meantime, a national organization called Mikvah

USA was approached. The group assists communities around the world to build mikvahs, provide guidance, and to support the use of mikvahs. Their representatives came to assess the situation and agreed to take on the project. Mikvah USA raised tens of thousands of dollars necessary to make the repair of the primary pool. The project manager and crew worked for months to complete the task.

By the beginning of June 2019, not only was the problem fixed, but a completely new tiled pool was installed. Improvements include new heating and filtration systems, as well as a new gutter system to collect the rainwater needed for the mikvah.

An event to celebrate the re-opening will take place on July 7 from 4:53 p.m. at the mikvah. Representatives of Mikvah USA and the individuals who donated the funds for the repairs will attend. The entire community is invited to come to the program to support the mikvah, to tour the facility, and to express appreciation to the generous donors.

The New Haven Mikvah Society receives an allocation from the Jewish Federation of Greater New Haven. The mikvah is supported by the New Haven Board of Rabbis. To help the mikvah maintain its importance for the New Haven Jewish community, please send your donations to the New Haven Mikvah Society, Inc. at mikvah.org/donate.

Temple Emanuel Recognizes Rabbi Michael Farbman's 10 Years of Service

Temple Emanuel of Greater New Haven celebrated Rabbi Michael Farbman's ten years of service to the congregation with a "Sweet as Honey" dinner on June 23.

Rabbi Farbman joined Temple Emanuel as its spiritual leader in 2010, following a year-long search to replace retired Rabbi Jerry Brieger. Born in Vitebsk, Belarus, the absence of organized religion did not deter Rabbi Farbman nor his wife, Olga, who, separately and then together, learned what Judaism was and what it meant to them. Both became interested in becoming rabbis, but deciding that one in the family would be enough, Olga studied to become a Jewish educator instead. Rabbi Farbman was ordained at the Leo Baeck Institute in London, the day after he became a Bar Mitzvah, which was not available in the country of his birth.

Following his ordination, Rabbi Farbman served as Assistant Rabbi at the West London Synagogue in the UK, helped build the Sha'arei Shalom Progressive Judaism Community in St. Petersburg, Russia and

served as Rabbi-in-Residence at the Washington Hebrew Congregation. Serendipitously, Rabbi Farbman's mentor in London was Rabbi Mark Winer, Temple Emanuel's first rabbi! Rabbi Farbman has continued the strong musical influence of his predecessors, Rabbi Winer and Rabbi Brieger. He brings a new joy and energy to the congregation with his dynamic guitar-playing at services, accompanied by the TE Band (made up of congregants from middle school to retirement age, including sons Sam and Robert).

In May of this year, Rabbi Farbman received his second Master's Degree in Sacred Theology from the Yale Divinity School.

Past TE President, Alan Kliger stated: "We have a Rabbi who has been an inspirational leader. He has provided a constant vision of the future, and urges us to discover what TE might become. Every day, our Rabbi shows his concern for each congregant -- those



in pain, those in fear, those with confusion, uncertainty -- and also those with joy, with enthusiasm, with wonderful anticipation of new career, new relationships, new life."

Temple Emanuel is very proud of Rabbi Farbman's accomplishments and is honored to recognize his ten years of service to the synagogue and the greater New Haven community.

EAST COAST JEWISH OVERNIGHT & DAY

CAMP FAIR

Over 18 summer camps from New England & Mid Atlantic region

Sunday, November 10 | 1-3 p.m.
JCC of Greater New Haven

FREE ADMISSION OPEN-HOUSE CAMP DISCOUNTS

Come for a family fun day at the JCC and learn about some of the **best Jewish overnight and day camps.**

EXPERIENCE

Rothberg Family Climbing Wall Challenge | MakerSpace Crafts
Camp-Style Food Available for Purchase

Jewish Foundation OF GREATER NEW HAVEN

JEWISHCAMP one happy camper

JCC OF GREATER NEW HAVEN

For more information contact Beth Kupcho | (203) 387-2424 x316
Beckerman Lender Jewish Community Building | 360 Amity Road, Woodbridge, CT | www.jccnh.org

JCC OF GREATER NEW HAVEN
Spa at the J

Our beautifully appointed Spa at the J offers a unique, revitalizing experience. Our spacious, amenity-filled locker rooms and the warm ambiance of the spa suites create the perfect atmosphere to relax and rehabilitate.

All services include complimentary use of our sauna, steam room, whirlpool, and showers. Spa at the J is conveniently located within our Health & Wellness Center - the ultimate destination for you to **RENEW, REFRESH, AND REVITALIZE!**

Every session is uniquely tailored to you, the client, to promote a healthy body and mind.

Located at:
The JCC of Greater New Haven, Beckerman Lender Building
360 Amity Road
Woodbridge
Contact: Susan Donovan
(203) 387-2424 x444

FACIAL treatments

MASSAGE services

REFLEXOLOGY services

BODY treatments

new acupuncture & WAXING services available

Find out more at jccnh.org/spa

Business Banking with your Community Bank

Essex Savings Bank offers the services you need to build your business. Talk to us today and see why Essex Savings Bank is a commercial lending leader in our area.

ESSEX SAVINGS BANK
Service & Trust Since 1851

Essex, 35 Plains Road, 860-767-2573 • Essex, 9 Main Street, 860-767-8238
Chester, 203 Middlesex Avenue, 860-526-0000 • Madison, 99 Durham Road, 203-318-8611
Old Saybrook, 155 Main Street, 860-388-3543 • Old Lyme, 101 Halls Road, 860-434-1646
Toll-Free: 877-377-3922 • www.essexsavings.com

Member FDIC Equal Housing Lender

Live Where Faith, Friendship & Family Come First

We're a senior living community connected by our values, our passions, and our spirituality. Welcoming all faiths, **Coachman Square** invites you to discover how first-class service and care let you focus on what matters most.

Our premier assisted living and memory care provides:

- Award-winning arthritis exercise programs
- Daily transportation for all residents
- Award-winning dining
- Care plans based on need, rather than on time spent providing care
- The chance to celebrate faith with friends

Call 203-397-7544 today to tour and see how we're setting the Benchmark in senior living.

21 Bradley Road • Woodbridge, CT 06525
203-397-7544

Coachman Square at Woodbridge
A Benchmark Senior Living Community

www.CoachmanSquareAtWoodbridge.com

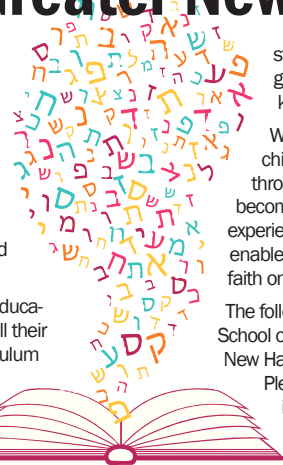
ASSISTED LIVING • MEMORY CARE

Hebrew School Opportunities Offered Throughout Greater New Haven

by Talya Hyman
Shalom New Haven Intern

Education remains a fundamental principle within Jewish tradition. The transmission of Jewish values, practices, and culture throughout generations ensures the continuity of our people, and beginning at a young age, instills in children an unparalleled sense of Jewish identity.

As the importance and core role of Jewish education is recognized, many parents opt to enroll their children at Hebrew School, a religious curriculum offered once or twice a week within synagogues. These Hebrew School programs teach children the intrinsic values of Judaism such as text



study, Shabbat and the holidays, Hebrew language literacy, the importance of Torah, tzedakah (charity), and chesed (kindness).

With knowledge comes power. When our children are exposed to the beauty of Judaism through learning about our traditions, they become the keyholders of their own religious experience. That power, with its diversity and unity, enables them to pass the eternal messages of our faith on to others.

The following list is a guide to the Hebrew/Religious School offerings in communities throughout Greater New Haven for the 2019-2020 academic year.

Please contact the synagogues listed for more information, and to determine the program best suited to your child's religious and spiritual needs.

BETH ISRAEL SYNAGOGUE- WALLINGFORD

www.bethisraelwallingford.org
info@bethisraelwallingford.org | (203) 269-5983
—Sunday School

CONGREGATION BETH EL-KESER ISRAEL (BEKI)- NEW HAVEN

www.beki.org | Ina Silverman, Principal
principal@beki.org | (203) 389-2108
—Religious School (K-grade 7)
—B'nai Mitzva Program
—Meyuchad (for special needs students with support from the Jewish Federation of Greater New Haven)

CONGREGATION BETH SHALOM RODFE ZEDEK- CHESTER

www.cbsrz.org | Belinda Brennan, Educator
belinda@cbsrz.org | (860) 526-8920
Kivvun:

—Hatchala (birth-4-year-olds)
—Kadimah (K-grade 7)
—Masah (grades 8-12)

CONGREGATION B'NAI JACOB- WOODBRIDGE

www.bnaijacob.org | Lynn Ginzberg, Admin. Director
cbj.school@gmail.com | (203) 389-2111
RELIGIOUS SCHOOL:

—YAHAD (pre-K-grade 7) together with Or Shalom on Sunday mornings
—Gan Hayaed Sundays (3-4-year-olds)

CHABAD OF MILFORD-THE HEBREW CONGREGATION OF WOODMONT- MILFORD

www.jewishmilford.com | Rabbi Schneur and Mrs. Chanie Wilhelm, Directors | (203) 878-4569
—Jewish Kids Club/Hebrew School (4-6-year-olds)

CONGREGATION MISHKAN ISRAEL- HAMDEN

www.cmihampden.org | Michelle Goldstein, Director
mgoldstein@cmihampden.org | (203) 288-3877
—Religious School (pre-K-grade 3; grades 4-7)
—CMI High (grades 8-12)

CONGREGATION OR SHALOM- ORANGE

www.orshalomct.org
info@OrShalomCT.org | (203) 799-2341
—YAHAD (pre-K-grade 7) together with B'nai Jacob on Sunday mornings
—Bar/Bat Mitzvah Class (grade 7)

TEMPLE BETH DAVID- CHESHIRE

www.tbdceshire.org | Jodi Harris, Director
education@tbdceshire.org | (203)-272-0037
—Religious School (preschool-grade 7)

TEMPLE BETH SHOLOM- HAMDEN

www.tbshampden.com | Gail Raucher, Director
1809HebrewSchool@gmail.com | (203) 288-7748
—Hebrew School (preschool-grade 7)

TEMPLE BETH TIKVAH- MADISON

www.tbtsshoreline.org | Cantor Mark Stanton, Educator
cantor@tbtsshoreline.org | (203) 245-7028
TBT Tots (2.5-5-year-olds)
RELIGIOUS SCHOOL:
—Part of a Sacred Community (pre-K-grade 2)
—Tools of our Heritage (grades 3-7)
—The Chain of Tradition (grades 8-12)

TEMPLE EMANUEL- ORANGE

www.tegnh.org | Olga Markus, Director
school@tegnh.org | (203) 397-3000
—Religious School (pre-K-grade 7)
—Post Bnei Mitzvah Program (grades 8-12)

View our community directory of Hebrew Schools at jewishnewhaven.org/hebrew-schools. This article is sponsored by the Center for Jewish Life & Learning (CJLL) of the Jewish Federation of Greater New Haven.

SYNAGOGUE SCHOOL SCHOLARSHIPS:

The Jewish Foundation offers needs-based assistance for Greater New Haven synagogue schools. The deadline for the online application is October 19, 2019

Interested in Jewish Life & Learning? Contact Eliraz Shifman Berman | eshifmanberman@jewishnewhaven.org

Art's Corner



Art Greenberg's sons, Larry and Allan Greenberg (left), at the unveiling of Art's plaque.



In the presence of loving JCC members, family, and friends, the JCC unveiled a plaque honoring Arthur Greenberg, who warmly greeted members as family for 18 years.

Art Greenberg passed away in January at the age of 96. He was a constant and inspiring presence at the JCC as a member, father to the JCC of Greater New Haven's Director of Health and Physical Education Allan Greenberg and, for the past 18 years, a dedicated employee. Art greeted and assisted thousands of members as the early morning "face of the JCC". It is no stretch to say that Art was beloved by the morning workout crew and his own exercise regimen was an inspiration to all who wanted to know the secret to Art's longevity.

Art served in the Navy during World War II in brave service to his country aboard the USS Tuscaloosa and participated in the D-Day invasion of Normandy, which hastened the Allied victory over Nazi Germany. He raised his family of three boys, Larry, Allan and Mark, in the New Haven area, and in his later years became a fixture at the JCC. Art's introduction to exercise began more than 30 years ago when the JCC launched a successful program addressing the fitness needs of sedentary seniors; Art and his late wife Rose became enthusiastic participants.

Art's memory will be a blessing to all who knew and loved him.

Community Rallies Against BDS

Jewish communities and college campuses are often on the front lines of the fight against the discriminatory Boycott, Divestment, and Sanctions (BDS) movement. BDS is an effort to use economic leverage in order to create a world without a Jewish state. The movement, which distorts Zionism and runs counter to peace-building efforts, manifests itself in local communities in a variety of ways — such as newspaper op-eds, anti-Israel rallies, and city council resolutions.

For years, college campuses have been hotbeds of anti-Israel activity, and the environment for Jewish students seems to be getting worse. Anti-Israel organizations maintain a heavy presence and their attacks are growing in sophistication with increasing support from professional groups. They have also gained traction in progressive circles, framing Zionism as a racist cause. Most troubling, over the past several years there has been a four-fold increase in the number of anti-Semitic incidents on campus. In recent years, new BDS tactics, such as disrupting pro-Israel events and holding pro-BDS votes on Jewish holidays, have been used at some of the nation's largest — and in some cases most heavily Jewish — campuses. "When anti-Israel activity became prevalent in our student council, the environment for Jewish and pro-Israel students became hostile. Feeling alone and isolated, I was in serious need of assistance," said Ariela Rivkin, University of Wisconsin-Madison student.

"The Jewish community in Greater New Haven has also been a target of some BDS actions - specifically hostile op-eds in the local newspapers" said Eliraz Shifman-



Berman, Director of the Jewish Community Relations Council (JCRC) of the Jewish Federation of Greater New Haven. "To answer this tactic of misinformation, JCRC responded with op-eds written by our own JCRC co-chairman Arthur Levy," Shifman-Berman said, referring to the op-ed pieces "Distorting the story of Israel's history", and "A failing grade in Middle East History 101" which was co-signed by Allan Hillman, Past JCRC chair, and Elaine Braffman, Past Chair of Women's Philanthropy. Both pieces saw light in the New Haven Register. "These articles show a more objective look at history and its implication on current life in Israel and the Israeli-Palestine conflict," said Shifman-Berman.

The Jewish Federation of Greater New Haven and its JCRC work in collaboration with The Israel Action Network (IAN). IAN helps educate and mobilize communities to counter BDS. The community strategy team guides professionals through community relations crises, assisting with messaging, advocacy, and organizing. IAN serves the network of 147 Jewish Federations, 300 Network Communities, and 125 Jewish Community Relations Councils. IAN also plays an integral role in the fight against BDS on college campuses. Working with local federations, IAN ensures their allies — including students, parents, faculty, and administrators — have the support they need to effectively counter BDS and other anti-Israel efforts.

Parents and students who are interested in learning tactics that can help them effectively respond to BDS on campus are invited to an educational event in August, which will be offered by the JCRC. Details will be available at jewishnewhaven.org/rsvp

Providing a warm, caring and inclusive
Brit Milah experience

Ronald Buckman, MD, Mohel

Over 30 years of experience doing circumcisions.
Board Certified, Brit Kodesh graduate.
Serving Connecticut, Massachusetts and internationally.

860-646-0649 • www.CTmohel.com

Want your kids to
LOVE Hebrew school?

Looking for a warm and welcoming community that will enrich your child's life and your life? Temple Emanuel is the place for your family! Our kids LOVE Hebrew school!

Registration for pre-K through 7th grade now open,
Religious School begins September 8, 2019

Check out our Shabbat Under the Stars and
BBQ picnic on September 6! (free with RSVP)

For more information: www.TEGNH.org
or call Olga Markus ☎ 203-397-3000 ext. 3

* Free Temple Emanuel membership is offered for one year to families with oldest child enrolled in Hebrew school in pre-K through 4th grade!



Found a House?
Apply Online or In Person.
essexsavings.com



ESSEX SAVINGS BANK
Service & Trust Since 1851

Essex, 35 Plains Road, 860-767-2573 • Essex, 9 Main Street, 860-767-8238
Chester, 203 Middlesex Avenue, 860-526-0000 • Madison, 99 Durham Road, 203-318-8611
Old Lyme, 101 Halls Road, 860-434-1646 • Old Saybrook, 155 Main Street, 860-388-3543
Toll-Free: 877-377-3922 • www.essexsavings.com

Member FDIC

Equal Housing Lender