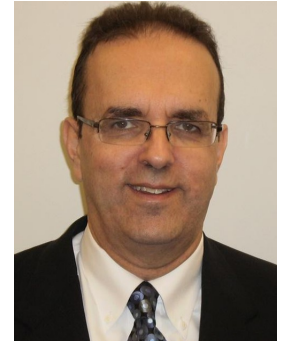




Dear Friends,

Our annual campaign concludes at the end of this month. If you have made a contribution to our Federation this year, let me express my deepest appreciation for your funding of our Jewish community – locally, nationally, in Israel and around the world. It is personally gratifying to me to have so many members of our community involved in keeping our community strong. Many of you have been stalwarts for many years, so on behalf of the Federation board and staff – THANK YOU!



If you have not yet contributed, there is still time to join your Jewish friends and community members to back the work of Federation and our partner/funding recipients. The following is a detailed description of this work and recipients:

- United Jewish School – up to \$18,000 per year contribution, matching the funding from Congregation Ahavas Israel and Temple Emanuel
- Temple Emanuel Food Bank
- Social services support - resource coordination, financial support for those in need, emergency loans and camp scholarships
- Community and young adult programming, e.g. the Hanukkah Bowling Party, Purim Carnival, Jewish Cultural Council and Film Festival
- Hillels in Michigan, e.g. at GVSU, MSU and U of M
- Jewish Theatre Grand Rapids
- Shir Shalom Choir
- Chabad House of Western Michigan
- Other local and state organizations - Corners of the Field Garden, Michigan Israel Business Bridge, Kaufman Interfaith Institute, Partnership 2Gether
- National organizations – American Jewish Committee, Anti-Defamation League, Birthright

*Continues on page 2*

**Our Mission**

Jewish Federation of Grand Rapids unites the local Jewish community to sustain and strengthen Jews locally, in Israel, and around the world.

This mission is accomplished by providing services to the community and through fundraising and allocation efforts.

**Like Jewish Federation of Grand Rapids  
on Facebook!**

**Inside this issue:**

Federation News	1-3
Community	4,8-9
Film Festival	5-7
Senior News	3
United Jewish School	9
Congregational	10
Endowment	11

**Jewish Federation of Grand Rapids**

2727 Michigan NE  
Grand Rapids, MI 49506  
616.942.5553  
616.942.5780 fax  
info@jfgr.org  
www.jfgr.org

**Officers**

*Chair*  
Claude Titche III  
*Vice Chairs*  
David Alfonso  
Dan Hurwitz  
Judith Joseph  
Karen Padnos  
*Past Chair*  
Greg Kaufman  
*Executive Director*  
Michael Present

**Board of Directors**

Davida Dennen  
Machelle Hammond  
Andrew Samrick  
Audrey Sundstrom  
Lanny Thodoy  
Marni Vyn  
John Winestone  
Chad Zagel

**Ex-Officio Members**

Congregation Ahavas Israel  
Rabbi David Krishef  
Guy De Jager, President  
  
Temple Emanuel  
Rabbi Michael Schadick  
Len Robinson, President  
  
Chabad House  
Of Western Michigan  
Rabbi Yosef Weingarten



Please make your pledge to  
**Campaign 2014** by April 30, 2015.

Your donation to JFGR is tax deductible. Payments can be made by cash, check, credit card, or stock. Pay in full or set up installments. You can even pay online at [www.jewishgrandrapids.org](http://www.jewishgrandrapids.org). Any new gift or increase is matched dollar for dollar by a challenge grant.

\*Total does not include matching grants.

**Matching Grants Campaign 2014**

The **Louis and Helen Padnos Foundation** has made a dollar-for-dollar matching grant commitment for all new gifts and increases in contributions.

In addition, the **Hy and Greta Berkowitz Foundation** has made a similar matching grant commitment for new gifts and increases in contributions from donors age 45 and under.

Continued from page 1

- Israel Action Network – collaborative pro-Israel advocacy project of the Jewish Federations of North America and the Jewish Council for Public Affairs

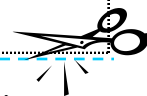
World Jewry in Israel and around the globe through Federation’s international partners – the Jewish Agency for Israel and the American Jewish Joint Distribution Committee.

You may not be familiar with all of these organizations or activities. Please do not hesitate to contact me should you want information about them. I would also appreciate your feedback about this list. How can we do better? Finally, through these efforts, are we achieving our Mission - as stated on the first page of *The Shofar* every month – to unite our community, and sustain and strengthen Jews locally, in Israel and around the world?

Best wishes to you and your family for a Chag Pesach Sameach. Enjoy your Seder!

Best regards,  
Mike  
mike@jfgr.org

STAFF: | Executive Director: Mike Present, 616.942.5553 ext. 207, [mike@jfgr.org](mailto:mike@jfgr.org)  
| Social Service Director: Ann Berman, ext. 206, [ann@jfgr.org](mailto:ann@jfgr.org) | Programming Director: Sari Cohen, ext. 205, [sari@jfgr.org](mailto:sari@jfgr.org)  
| Financial Administrator: Jennifer Stanton, ext. 203, [jennifer@jfgr.org](mailto:jennifer@jfgr.org) | Campaign Coordinator: Cathy Winick, ext. 204, [cathy@jfgr.org](mailto:cathy@jfgr.org)



**ANNUAL CAMPAIGN**

Jewish Federation of Grand Rapids  
2727 Michigan NE  
Grand Rapids, MI 49506

(616) 942-5553  
[www.jfgr.org](http://www.jfgr.org)

**Live Generously.**

Name \_\_\_\_\_

Address \_\_\_\_\_

Please cut out this pledge card, fill it in and send it to the Federation office.

I HEREBY PLEDGE TO THE FEDERATION ANNUAL CAMPAIGN THE SUM OF: \$ \_\_\_\_\_

\_\_\_\_\_  
DONOR’S SIGNATURE

- Method of Payment:  Check  Stock  
Please Charge my:  MasterCard  Visa  
 Discover  American Express

\_\_\_\_\_  
Card Number  
Exp. Date: \_\_\_\_\_

## Do You Take Your E-Reader to Bed?

*Article is courtesy of Right at Home, Inc. a national organization dedicated to improving the quality of life for those they serve.*

Feeling groggy in the morning? If you're reading yourself to sleep with a light-emitting electronic device, you may be sabotaging your sleep. Good-quality sleep is vital for healthy aging. Poor sleep endangers our health, and puts us at higher risk of falls and other accidents. In late 2014, the American Academy of Neurology even announced that poor sleep is a risk factor for dementia.

Yet as we grow older, refreshing slumber often eludes us. Pain, depression, incontinence, inactivity, medications, family caregiver duties and even natural changes in our sleep cycle can make it hard to go to sleep and stay asleep. A poll of Caring Right at Home readers showed that only one-fourth are getting the recommended eight hours per night!

And these days, we face a new challenge to good-quality sleep. In 2011, the National Sleep Foundation reported that computers, smart phones, texting, video games and even watching TV not only tempt us to stay up later, but also contribute to lower-quality sleep once we finally hit the sack.

Said study author Charles Czeisler, Ph.D., M.D., of Harvard Medical School and Brigham and Women's Hospital, "Artificial light exposure between dusk and the time we go to bed at night suppresses release of the sleep-promoting hormone melatonin, enhances alertness and shifts circadian rhythms to a later hour—making it more difficult to fall asleep." (Circadian rhythms are the body's natural sleep/wake cycle.)

Czeisler added, "This study reveals that light-emitting screens are in heavy use within the pivotal hour before sleep. Invasion of such alerting technologies into the bedroom may contribute to the high proportion of respondents who reported that they routinely get less sleep than they need."

And the problem has expanded: Not only are more of us staying up later using our devices, but we also are taking them to bed with us! It's a long tradition to "read ourselves to sleep." Though we sometimes report that a book was so exciting that we stayed up all night reading it, for the most part we drift off after a short time. Reading can be an effective way to transition into sleep for many people.

But now, more people are doing their bedtime reading on a backlit e-reader or tablet computer. And this, say sleep experts, could be a problem. When the light beams directly into our eyes, sleep comes more slowly and is less refreshing. According to Penn State University professor Anne Marie Chang, "Electronic devices emit light that is short-wavelength-enriched light, which has a higher concentration of blue light than natural light. This is different from natural light in composition, having a greater impact on sleep or circadian rhythms."

Chang recently conducted an experiment at Brigham and Women's Hospital, where she is a neuroscientist in the Division of Sleep and Circadian Disorders. Under carefully monitored conditions in the hospital's sleep laboratory, a group of volunteers read a book before bed for five nights. Then, for the next five nights, they are tucked into bed with an iPad. Chang's team compared the quality and duration of their sleep on the traditional book nights versus the iPad nights. The researchers found that when reading with the iPad, participants took on average 10 minutes longer to fall asleep. Their sleep pattern also featured a significantly lower amount of restorative REM sleep. Said Chang, "Our most surprising finding was that individuals using the e-reader would be more tired and take longer to become alert the next morning. This has real consequences for daytime functioning.

"It's important to note that this study focused on e-readers that emit light, not on those using the "epaper" display that mimics the appearance of ink on paper. Experts believe those devices, for example, the original Kindle, do not have the same sleep-disturbing effect.

Chang said, "We live in a sleep-restricted society in general. It is important to further study the effects of using light-emitting devices, especially before bed, as they may have longer-term health consequences than we previously considered."

Group outing to Jewish Theatre of Grand Rapids Matinee.

### "DEATH OF A SALESMAN"

**Sunday April 26, 2:30 p.m.** - We will meet in the Temple Emanuel parking lot at 2:15 p.m. to carpool down to the theater. Please let me know ASAP if you would like to go with us so that I can reserve group tickets. Tickets: \$15

RSVP to Ann at 616-942-5553 by Tuesday April 21

### LUNCH BUNCH Thursday, April 23,

**11:30 a.m.**

**Cherie Inn**

969 Cherry St SE

Cost: \$8

RSVP by Tuesday April 21 to Ann at 616-942-5553

**Transportation is also available by calling Ann**

\*If a cancellation is necessary, you will be notified by phone by 10 a.m.

### LUNCH BUNCH SAVE THESE DATES:

**May 21 and June 18 - TBD - time will be**

**11:30 a.m.**

Taking suggestions for places to eat: 616-942-5553



## THE JEWISH CULTURAL COUNCIL INVITES YOU!

**SAVE THE DATE!**

**SUNDAY, MAY 17 – 4:00 P.M.**  
Congregation Ahavas Israel  
An afternoon of laughter and entertainment  
with

**BOB ALPER**

Family Friendly Show (children 11 years and up)



Rabbi  
Stand-up comic  
Author

[www.bobalper.com/video2.html](http://www.bobalper.com/video2.html)



Temple Emanuel is delighted to announce that they will host,

### "Young Girl at Ghetto Terezin: 1941-1944"

An exhibit from the Museum of Jewish Heritage: A Living Memorial to the Holocaust in New York City, from Sunday, April 19 through Sunday, April 26.

In 1941, Helga Weissova was deported from Prague to the Terezin Ghetto with her parents. Her father told her, "draw what you see," and Helga began documenting her life in the ghetto. When she and her mother were deported to Auschwitz in September 1944, Helga entrusted her drawings to her uncle, who hid them until liberation and took them back to Prague. Helga and her mother survived and returned to Prague after the war.

The exhibit comprises photographic reproductions of 10 of Helga's drawings. Accompanying the drawings are excerpts from her diary that convey her life in the Terezin ghetto.

We are hosting the exhibit in remembrance of the six million Jews who died during the Holocaust, and in observance of Yom HaShoah.

We invite the entire community to join us for the opening reception, catered by Marla Tulett, on Sunday, April 19 from 10:00 am to 12 Noon.

The exhibit will also be open Tuesday, April 21 through Thursday, April 23 from 9:00 am to 5:00 pm, Friday, April 24 from 9:00 am until the end of the Oneg following Shabbat services, and on Sunday, April 26, from 10:00 am to 1:00 pm.

This exhibit is underwritten by the Joseph & Mary Stevens Holocaust Education Fund.



# PURIM

## 2015

# CARNIVAL



It was Fun for All  
Ages!!

Check out more photos at [www.flickr.com/photos/greenguillemot](http://www.flickr.com/photos/greenguillemot) or by using the qr code





The 2015 Jewish Film Festival is once again bringing special movies to the Grand Rapids community. The committee has been previewing movies and planning special programs. As in previous years, the Film Festival will be held at Celebration! North Cinemas. Watch for more details about the festival events in our community mailings.

The Film Festival is offering special rates through a **flex pass** (eight admissions): the flex pass is **\$36.00**. Flex pass ticket holders will have seats reserved until **THIRTY MINUTES** prior to the movie beginning. At that time, tickets will be sold for all seats.

**PLEASE PLAN TO ARRIVE EARLY.** That means even if you are holding a flex pass ticket, seats are not guaranteed later than thirty minutes prior to movie time.

The Film Festival also offers members of the community an opportunity to become an individual sponsor of the Jewish Film Festival. Please read about the benefits of becoming a financial supporter below.

### Individual Sponsors Get Great Benefits!

**Director: (\$500.00)** receive two flex passes (16 admissions), recognition in all publications and four admissions to all private receptions, dinners and events.

**Producers: (\$250)** receive two flex passes (16 admissions), recognition in all publications and two admissions to all private receptions, dinners and events.

**Actor: (\$100.00)** receive one season punch card (8 admissions) and recognition in the program booklet.

**Film Fan:** If you would like to financially support the Jewish Film Festival and do not see an amount that interests you, please feel free to send a contribution in any amount to the Federation office. You will be listed in the program booklet.

## *I would like to be a Film Festival Sponsor*

NAME: \_\_\_\_\_

PHONE: \_\_\_\_\_

ADDRESS: \_\_\_\_\_

\_\_\_ Film Festival Director (\$500) \_\_\_ Film Festival Producer (\$250) \_\_\_ Film Festival Actor (\$100.00)

\_\_\_ Film Festival Fan (\$50) \_\_\_ Flex Pass (\$36)

Method of Payment

- Visa
- American Express

- Check
- MasterCard
- Discover

Credit Card # \_\_\_\_\_

Exp. date \_\_\_\_\_

Signature \_\_\_\_\_

**Pay by check or credit card.**  
 Mail this form and your payment to:  
**Jewish Federation of Grand Rapids**  
 2727 Michigan NE, Grand Rapids, MI 49506



**Celebration!® North Cinema**

Admission is \$6.00 per film. / Flex pass ticket: \$36.00  
(eight admissions) Contact: 616-942-5553 or  
sari@jfgr.org

## HANNAH COHEN HOLY COMMUNION

**May 3 - Sunday Family Matinee 1:30 p.m.**

(13 min. - Documentary - UK) English

Set in Dublin in the 1970s this film explores a rarely glimpsed Ireland, as seen through the eyes of spirited seven year old Hannah Cohen. Hannah can't wait to make her Holy Communion. The only problem is – she's Jewish! An Irish/Jewish film with an international feel, the beauty of this story lies in its simplicity, humor, and the universal desire to fit in.



[www.7thart.com/films/Hannah-Cohens-Holy-Communion](http://www.7thart.com/films/Hannah-Cohens-Holy-Communion)

## HAVANAH CURVEBALL

**May 3 -Sunday**

**1:30 p.m.**

(60 min. - Documentary - USA) English/Spanish

Mica is a typical young teen. Enthusiastic, idealistic and dreaming of baseball. At 13, he is studying for his Bar Mitzvah, the Jewish coming-of-age rite. An earnest kid, he



takes to heart his rabbi's requirement to help "heal the world". Imagining himself a savior of sorts, he launches a grand plan to send baseballs to Cuba, a country with a mysterious pull. He knows only that Cubans are poor and love baseball, and that Cuba saved his grandpa's life. On a hunch, his award-winning filmmaker parents pick up their camera. They know the U.S. embargo with Cuba, and the complications of growing up, will throw him a curveball.

[www.havanacurveball.info](http://www.havanacurveball.info)

## APPLES FROM THE DESERT

**May 3 - Sunday**

**7:30 p.m.**

(96 min. - Drama - Israel) Hebrew

This film is about the journey into the secular world of a rebellious teenage daughter of ultra-Orthodox Jewish parents. It is an adaptation of the award-winning Israeli play that poignantly explores themes of love and reconciliation. Nominated for three Israeli Academy Awards, *Apples from the Desert* is a timeless and moving tale of tradition versus modernity. Audience Award Atlanta Jewish Film Festival. Jury Award 2015 San Diego Jewish Film Festival.



[www.israelfilmcenter.org/israeli-film-database/films/apples-from-the-desert](http://www.israelfilmcenter.org/israeli-film-database/films/apples-from-the-desert)

Visit us at: [www.jewishgrandrapids.org](http://www.jewishgrandrapids.org) or on facebook [www.facebook.com/jewishfilmfestivalgrandrapids](http://www.facebook.com/jewishfilmfestivalgrandrapids)  
Despite our best intentions and efforts, sometimes arrangements go awry. If necessary, we reserve the right to change or cancel speakers, movies or location. For information call: Jewish Federation of Grand Rapids 616-942-5553 or visit [www.jewishgrandrapids.org](http://www.jewishgrandrapids.org)



The Film Festival is made possible by the generous grant from the Rosenzweig-Coopersmith Foundations and private donors.

## I SHALL NOT BE SILENT

**May 4 – Monday**

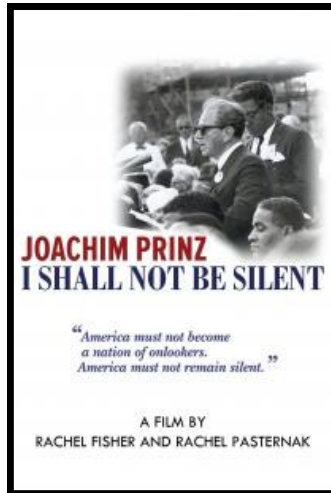
**7:30 p.m.**

(57 min. - Documentary - USA) English

This is a film about the power of a voice for justice. In 1930s Berlin, Joachim Prinz was a young rabbi as the Hitler regime was rising to power. Civil rights of Jews were systematically being stripped away and Prinz restored the self-esteem of the German Jews. Expelled from Germany in 1937, Prinz arrived in the United States and was horrified to witness racism against African-Americans. He became a leader of the civil rights movement and spoke at the March on Washington for Jobs and Freedom in 1963.

**Guest Speaker : Dr. Glenn R. Plummer, Senior Pastor of Ambassadors for Christ Church**

[www.menemshafilms.com/joachim-prinz-i-shall-not-be-silent](http://www.menemshafilms.com/joachim-prinz-i-shall-not-be-silent)



## MR. KAPLAN

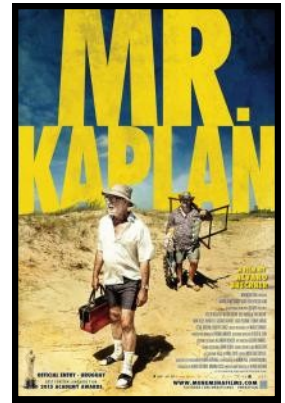
**May 6 – Wednesday**

**7:30 p.m.**

(98 min. - Comedy - Uruguay) Spanish

After fleeing Europe for Uruguay during WWII, Jacob Kaplan built a quiet life. Now 76, he begins to question his worth. After learning of a mysterious German prowling the shores of a nearby beach, he becomes convinced that he's found a Nazi in hiding and plans to expose him. Expertly distilling a potent mixture of emotional depth and deadpan comedy, *Mr. Kaplan*

is a vivacious meditation on family, aging, and the drive for significance.



[www.menemshafilms.com/mr-kaplan](http://www.menemshafilms.com/mr-kaplan)

## 24 DAYS

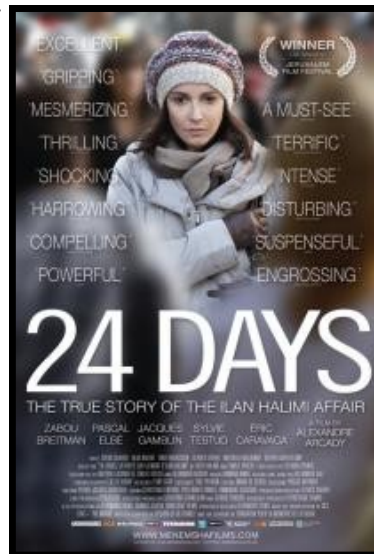
**May 5 – Tuesday**

**7:30 p.m.**

(108 min. - Drama - USA) English

Based on real events, this tense thriller captures what some consider a pivotal moment in a new wave of anti-Semitic sentiment and violence sweeping France. The 1986 kidnapping of 24 year-old Ilan Halimi by a suburban Parisian gang of thugs became a cause célèbre because of the anti-Semitic nature of the crime. It's such an important story, with such unsettling implications, that the French Ministry of Education decided to show *24 Days* in schools.

A top-notch French cast includes Zabou Breitman and Pascal Elbé as Ilan's parents, Jacques Gamblin as the lead police detective, and Sylvie Testud as the negotiator-psychologist.



[www.menemshafilms.com/24-days](http://www.menemshafilms.com/24-days)

**FILM FESTIVAL DINNER**

**May 7 – Thursday**  
**6:00 p.m.**

**Middle Eastern Dinner (in the Wave Room)**

Catered by RAAD'S Mediterranean Grill

Adults: \$10.00 - Children (12 and younger): \$5.00

RSVP by May 4th to the Jewish Federation

At 942-5553 or [sari@jfgf.org](mailto:sari@jfgf.org)

## ABOVE AND BEYOND

**May 7 - Thursday**

**7:30 p.m.**

(87 min. - Documentary with speaker - USA) English

In 1948, just three years after the liberation of Nazi death camps, a group of Jewish American pilots answered a call for help. In secret and at great personal risk, they smuggled planes out of the U.S., trained behind the Iron Curtain in Czechoslovakia and flew for Israel in its War of Independence. As members of Machal – "volunteers from abroad" – this ragtag band of brothers not only turned the tide of the war, they also embarked on personal journeys of discovery and renewed Jewish pride.

**Guest Speaker: Roberta Grossman, Film Director**



[aboveandbeyondthemovie.com](http://aboveandbeyondthemovie.com)

# FILM FESTIVAL

Thursday, May 7  
6:00 PM

## MIDDLE EASTERN DINNER in the Wave Room

Catered by RAAD'S Mediterranean Grill

Menu: Raad's Salad, Vegetarian Jambalaya, Babaghanoush, Hummus, Falafel Wrap, Stuffed Grape Leaves, Vegetarian Somosa, and Baklava


Adults: \$10.00 - Children (12 and younger): \$5.00

RSVP by May 4th to the Jewish Federation At 942-5553 or Sari@jfgr.org

www.jtgr.org  
Presenting quality theatrical productions with Jewish themes that are universal in appeal.

JEWISH Theatre GRAND RAPIDS  
You don't have to be Jewish to LOVE Jewish Theatre!

Arthur Miller's Classic American Drama  
**DEATH OF A SALESMAN**



Used with permission. Costume rendering by [Signature]

**APRIL 16-26, 2015**  
Thursdays & Saturdays at 8 p.m.  
Sundays at 3 p.m.

GRCC Spectrum Theater  
160 Fountain St. NE

Tickets:  
**616-234-3946**  
on [www.jtgr.org](http://www.jtgr.org)

Season subscribers beginning March 30  
All others beginning April 6

### MISSION TO ISRAEL!

Are you thinking of going on a trip to Israel?

The Jewish Federation of Grand Rapids is in the process of organizing a mission to Israel. We would like to invite everyone interested to meet and brainstorm possible dates and areas of interest. If you are interested, please contact our office: 616-

942-5553 [info@jfgr.org](mailto:info@jfgr.org)

### SAVE THE DATE

JEWISH WOMEN OF GRAND RAPIDS

## Mega CHALAH Bake



An evening of unity, inspiration and fun.

**THURSDAY, MAY 28TH**  
TEMPLE EMANUEL

A joint project of the Jewish Federation, Temple Emanuel, Ahavas Israel and Chabad House.

### Hadassah Book Club

Wednesday, May 13th

Book to read:

"THE MUSEUM OF EXTRAORDINARY THINGS"

By Alice Hoffman

Host: Diane Bromberg  
2865 Lake Drive S.E.

RSVP: [616-949-6084](tel:616-949-6084)



Please let Diane know whether or not you will be attending. Thank you so very much.

Books available at Schulers Book Store on 28th Street.

As always, your faithful bookends.

SUE REMES .....616-949-3505

FLORY SILVERSTIEN.....616-949-5766



**Jewish Women's Professional Network:** We meet monthly for networking. All women are invited - whether working outside the home, thinking of returning to the workforce, in career transition, or a community volunteer. Please mark you calendars for **Wednesday May 3 at 12:00** (Restaurant TBD..stay tuned!) Note we will not meet on April 1 due to the close proximity to Passover and Spring Break

## Jewish Community Business Forum

**Thursday, April 16 12:00 -1:00 p.m.....El Barrio....545 Michigan NE**

Everyone is Welcome! A good networking opportunity to discuss business principles and to stay aware of resources available in our community.



## United Jewish School



Beit Sefer B'yahad/United Jewish School

1715 East Fulton Grand Rapids, MI 49503

Pam Rush School Director 616-459-5976 ext.12

[pam@templemanuelgr.org](mailto:pam@templemanuelgr.org) [www.unitedjewishschool.org](http://www.unitedjewishschool.org)



## School Calendar

- 4-1-15 No midweek – Spring Break
- 4-5-15 No Sunday school – Spring Break
- 4-8-15 No midweek – Spring Break
- 4-12-15 No Sunday school – Spring Break
- 4-19-15 Yom Hashoah program – Art exhibit  
“Holocaust thru Czech Children’s Eyes

Please remember UJS in your contributions.  
We have a beautiful **“Tribute”** card that we can send to that special someone.

## Middah of the Month

**אומץ לב - Ometz Lev**

We can all show Ometz Lev  
“Strength of Heart”

when we use our strength to pull others up,  
not push them down.



School closings: Please tune in to WZZM 13 and WOOD TV 8 for UJS closings. It will be listed as United Jewish School. You may also check their websites.

Courage does not always roar, sometimes courage is the quiet voice at the end of the day saying,  
“I will try again tomorrow.”

## *Congregation Ahavas Israel*

### **Mekhirat Hametz - Selling Hametz**

If possible, all hametz -- leavened products, foods not acceptable during Pesah, or materials containing such unacceptable food -- should be destroyed or given away before the holiday begins. Should this be impossible, the hametz may be stored in such a way that we are sure not to use it during the holiday and its actual ownership is transferred to a non-Jew until the holiday ends. Please return the mekhirat hametz form for the sale of leavened products (which can be downloaded from [AhavasIsraelGR.org](http://AhavasIsraelGR.org)) to Congregation Ahavas Israel by 12:00 noon on Friday, **April 3**.

### **Ma'ot Hittim - Passover Fund**

Don't forget to make a donation to the Ma'ot Hittim fund to help others fulfill the mitzvah of Pesah. Send your contribution to Congregation Ahavas Israel, marked Ma'ot Hittim.

### **Guide to Passover**

Look for the 2015 Rabbinical Assembly Pesah Guide, containing helpful information regarding kashrut for Passover, in the Religious Life section of the Ahavas Israel website. If you would like it emailed or mailed to you, please contact the synagogue office

## *Temple Emanuel*

### **Saturday, April 4<sup>th</sup> at 6:00 PM**

Second Night of Passover Seder

Non-Member Adults \$22, Kids \$16 (under age 10 free!)

### **Sunday, April 12<sup>th</sup> at 10:00 AM**

Your Opinion Counts & Brunch with Jim Siegel  
(Formerly known as the ABC Brunch)

### **Sunday, April 19<sup>th</sup> at 10:00 AM**

Opening Reception *Young Girl at Ghetto Terezin* art exhibit. The exhibit is available for viewing whenever the Temple is open from April 19<sup>th</sup> until April 26<sup>th</sup>. (For more info see page 4)

### **Sunday, April 26<sup>th</sup> at 10:00 AM**

Topics in Judaism with Shel Kopperl

## *Chabad House*

### **Cteen**

Come join us **April 19th** for so cteen fun!

Grades 9th-12th

We will G-d willing be joining the CTeen Regional Shabbaton the weekend of Iyar 5-7 - April 24-27.

To R.S.V.P. or for more info call Chana: 616-570-1742

### **Cteen Junior**

Come join us **April 23rd** for some Cteen Junior fun!!!

Location: Chabad of W Michigan: 2615 Michigan NE, Grand Rapids, MI Boys & Girls Grades 6th-8th

Time: 5pm-7pm cost \$10 (includes light dinner).

To R.S.V.P. or for more info call Chana: 616-570-1742

### **Chabad Kids Club - Jewish Heroes**

Come have a blast at the coolest Kid's Club around as we learn all about the Jewish Heroes from our history and discover our own extraordinary super powers!

**April 28th** - Rabbi Akiva

A true hero knows it's never too late to

learn something new. Rabbi Akiva started

learning Torah at the age of 40. Learn to be

a hero like Rabbi Akiva. Together let's get

ready for Lag Ba'omer, bonfire style, with

delicious s'mores and hot chocolate.

**Location:** Chabad of W Michigan: 2615 Michigan NE, Grand Rapids, MI

Boys & Girls Ages 5-12 Time: 4pm-6pm

\$10 per session (includes light dinner). To book or for more info call Chana: 616-570-1742

### **Gan Israel Day Camp**

**Dates: June 22nd - July 10th**

Boys & Girls Ages 5-12 / 9:00am - 3:30pm

**kiddy camp** / Boys & Girls Ages 3-4 9:00am - 3:30pm

Tuition fees cover all activities, snacks, and trips.

3 week session: \$500

Per week: \$180

To register or for more info please call Chana @ 616-570-1742 or email

WeingartenChana@gmail.com. A Jewish summer experience of a lifetime!

Life cycle times, both happy and sad, are traditional times to make donations to Jewish causes. You can make a donation of \$10 or more to the Jewish Federation of Grand Rapids in honor or in memory of members of our community. We then will acknowledge that donation with a card to that individual or family. This is a wonderful way to send your good wishes and be able to fulfill the mitzvah of tzedakah. Please be sure to indicate what the occasion is and who is to receive the card. Please specify which of the following funds you would like your donation to be credited to:

**Woman of Valor Fund**

To honor the women in our lives who have made a difference personally, locally or nationally.

**Federation General Endowment/L'Dor Vador Fund.**

To help ensure the continued work of the Jewish Federation of Grand Rapids for now and the future.

**Julian and Judith Joseph Fund.**

To provide for local programming and events through the Jewish Federation of Grand Rapids.

**David and Susan Samrick Youth Scholarship Fund.**

To provide scholarships to Jewish sleep away camps and experiences.

**Chuck and Maxine Shapiro Fund.**

To help ensure long-term aid to Israel and Jews around the world.

**Louis and Louise Weiner Fund.**

To help ensure local programming for seniors in the Grand Rapids Jewish Community.

**Jerry and Judy Subar Fund.**

To help ensure funding for overseas Jewish communities' needs.

**Leven Family Fund.**

To establish and provide Jewish facilities, and support for cooperative programming among the congregations that support Jewish education for our youth.

**Sam and Jane Kravitz Social Services Fund.**

To support Jewish social services in Grand Rapids.

**Donna G. Boorstein Memorial Fund.**

To help ensure funding for Jewish arts, culture and history in Greater Grand Rapids.

**Lois and Sheldon Kahn Health Help Fund.** To support health services for Jewish community members not covered by other financial resources.

## *Thank you for supporting the Grand Rapids Jewish Community*

### **Louis & Louise Weiner Fund**

In memory of Joan Winniman

From Toby Weiner Dolinka

### **Lois and Sheldon Kahn Health Help Fund**

In memory of Irene Schwitzman, aunt of Mike Present

From Mike & Carol Present



## JFGR Endowment Fund Donation Form

Donation from: Name \_\_\_\_\_ Fund (pick from list) \_\_\_\_\_

Donor Address \_\_\_\_\_ In honor of \_\_\_\_\_

Donor City/St/Zip \_\_\_\_\_ In memory of \_\_\_\_\_

Send card to: Name \_\_\_\_\_ Notes: \_\_\_\_\_

Send card to address \_\_\_\_\_ **Send your donation and this form to:**

Send card to City/St/Zip \_\_\_\_\_ **2727 Michigan NE, Grand Rapids, MI 49506**

## The Shofar

Jewish Federation of Grand Rapids  
2727 Michigan NE  
Grand Rapids, MI 49506-1240

Send article text to: [Ann@jfgr.org](mailto:Ann@jfgr.org)

Phone: 616.942.5553

Fax: 616.942.5780

[www.jewishgrandrapids.org](http://www.jewishgrandrapids.org)

Email: [info@jfgr.org](mailto:info@jfgr.org)

**Next Issue's Information Deadline:**

**APRIL 15, 2015**



Jewish Federation<sup>®</sup>  
OF GRAND RAPIDS

THE **STRENGTH** OF A PEOPLE.  
THE **POWER** OF COMMUNITY.

**Happy Passover!**  
**Chag Pesach Sameach!**

Passover April 4/Nissan 14 through April 12/Nissan 22