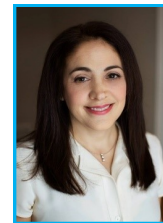




# The Shofar

T A M M U Z / A V - 5 7 7 8 — J U L Y 2 0 1 8 — W W W . J E W I S H G R A N D R A P I D S . O R G

With summer upon us, we are in the midst of wrapping up the Federation's fiscal year. As we reported last month, we had a strong campaign finish and exceeded our goals, with a final Campaign total (including matching grants) of \$458,487. This enabled us to increase allocations to some of our recipient organizations including Temple Emanuel Food Bank, Shir Shalom Choir, and Jewish Theatre of Grand Rapids. A full list of our recipient organizations can be found on page 2 herein. Coming up in next month's Shofar will be further details regarding Campaign 2017 as part of our Annual Report insert.



I am very proud of what the Federation accomplished over the past year. We have provided a wide range of social services, cultural and educational programs, and support to the community, including the Jewish Film Festival, Cultural Council series, Scholar-in-Resident, Sam Glaser, Israel at 70 speakers, Senior outings, Purim Carnival, Hannukah Bowling Party, JFGR Community Picnic, PJ Library playgroup and Young Adult social events, such as rock climbing and chocolate tasting.

I encourage you to visit our website at [www.jfgr.org](http://www.jfgr.org) to view our video highlighting Federation sponsored and partnered events that took place in the last year. We hope that with your continued engagement, the upcoming year will be even more special than the one we just finished. Towards that end, we welcome and encourage all suggestions for enriching our community experience.

This is also the time to recognize David Alfonso's contribution and service to our organization as the Board Chair for the past 3 years. On behalf of the Jewish Federation of Grand Rapids, I thank David for his tireless commitment to the Jewish Community. I am very pleased that David will continue serving on our Board as Past Chair and Vice Chair.

We welcome Marni Vyn as our new Board Chair. Marni, a native Grand Rapidian, has been a long standing and active member of the Jewish Community. She has been a member of the Federation Board for close to a decade, and is currently on the executive committee. She has previously served as President of Congregation Ahavas Israel, Board Member of United Jewish School, and a member of Ahavas Israel's Corners of the Field Garden committee.

As we embark on the upcoming year, we will strive to inspire, engage and connect with our community. One exciting way that this is already happening is our upcoming year-long program in partnership with Jewish Women Renaissance Project, that includes a 10-day trip to Israel for 11 women from our community. As someone relatively new to the community, I can't

*Executives Director letter continues on page 2*

**Our Mission**

Jewish Federation of Grand Rapids unites the local Jewish community to sustain and strengthen Jews locally, in Israel, and around the world.

This mission is accomplished by providing services to the community and through fundraising and allocation efforts.

**Like Jewish Federation of Grand Rapids on Facebook!**

**Inside this issue:**

Federation News	1-5
Community	6-8
Senior News	8
Cultural Council	4
United Jewish School	9
Congregational	9-10
Endowment	11

**Jewish Federation of Grand Rapids**

2727 Michigan NE  
Grand Rapids, MI 49506  
616.942.5553  
616.942.5780 fax  
info@jfgr.org  
www.jfgr.org

**Officers**

*Chair*  
Marni Vyn  
*Vice Chairs*  
Dan Hurwitz  
Judith Joseph  
Greg Kaufman  
Karen Padnos  
Claude Titche

*Past Chair*  
David Alfonso  
*Executive Director*  
Marisa Reed

**Board of Directors**

Davida Dennen  
Cary Fleischer  
Leigh Rapaport  
Daren Shavell  
Audrey Sundstrom  
Lanny Thodey  
Chad Zigel

**Ex-Officio Members**

Congregation Ahavas Israel  
Rabbi David Krishef  
Barbara Wepman, President  
  
Temple Emanuel  
Rabbi Michael Schadick  
Edie Landman, President  
  
Chabad House  
of Western Michigan  
Rabbi Yosef Weingarten

*Executive Directors letter continued from page 1*

think of a better way to get connected, than share what is certain to be an amazing learning experience and adventure. Personally, I haven't had the opportunity to return to Israel in nearly 25 years, and I am excited to be able to go back with 10 engaged female community members. While this trip is full, please consider joining the Federation on its January Community Leadership Mission to Israel on January 13-20, 2019. This is a great opportunity to engage in a community-building travel adventure. At this time, Federation has generous subsidies available for qualified applicants; however, we will need to obtain the requisite participation by August 30, 2018 to continue to offer this opportunity. Please visit our website for more information or contact me at Marisa@JFGR.org.

Come and explore Israel with your Federation and your Grand Rapids' Jewish Community!

Here's to a wonderful summer.

Shalom,

Marisa  
Executive Director

The Jewish Federation of Grand Rapids is proud to support and work with the following organizations:

- Anti-Defamation League
- Birthright Israel
- Chabad House of Western Michigan - Educational workshops
- Grand Valley State University Hillel
- HIAS
- Israel Action Network
- Jewish Council for Public Affairs
- Jewish Federations of North America
- Jewish Theatre Grand Rapids
- Kaufman Interfaith Institute
- Michigan Israel Business Accelerator
- Michigan State University Hillel
- Shir Shalom Choir
- Temple Emanuel Food Bank
- United Jewish School
- University of Michigan Hillel

STAFF: Executive Director: Marisa Reed, ext. 207, marisa@jfgr.org | Director of Social Service Resources: Ann Berman, ext. 206, ann@jfgr.org | Financial Administrator: Jennifer Stanton, ext. 203, jennifer@jfgr.org | Director of Donor Relations: Cathy Winick, ext. 204, cathy@jfgr.org

**ANNUAL CAMPAIGN**



Jewish Federation of Grand Rapids  
2727 Michigan NE  
Grand Rapids, MI 49506  
(616) 942-5553 info@jfgr.org  
www.jfgr.org

**Live Generously.**

Name \_\_\_\_\_  
Address \_\_\_\_\_  
City \_\_\_\_\_ State \_\_\_\_\_ Zip \_\_\_\_\_  
Phone:: \_\_\_\_\_ Email: \_\_\_\_\_

JFGR is a 501(c)(3) nonprofit organization

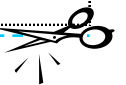
Please cut out this pledge card, fill it in and send it to the Federation office.

I HEREBY PLEDGE TO THE FEDERATION ANNUAL CAMPAIGN THE SUM OF: \$ \_\_\_\_\_

DONOR'S SIGNATURE \_\_\_\_\_

Method of Payment:  Check  Stock (Please Identify)  
Please Charge my:  MasterCard  Visa  
 Discover  American Express

Exp. Date: \_\_\_\_\_ Card Number \_\_\_\_\_  
Security (CVS) code: \_\_\_\_\_





## Job Openings at Federation and UJS

### Part-time Bookkeeper

Seeking applicants to work in a collaborative and flexible work environment. Familiarity with database management in a nonprofit environment is a plus.

#### The bookkeeper job duties include:

- Accounts payable and receivable
- Journal entries
- Budgets and other financial reports
- Preparing and updating QuickBooks for nonprofit
- Reconciling monthly bank statements
- Payroll Administration
- Insurance renewals
- Tracking Budget progress
- Prepare Donation receipts
- General office duties and special projects as needed

#### Qualifications:

- Proven proficiency in QuickBooks for nonprofit,
- MS Word & Excel
- Bookkeeping experience required
- Nonprofit experience and accounting education preferred
- Donor Perfect database management experience a plus
- Endowment account experience preferred

Resumes may be emailed to  
[marisa@ifgr.org](mailto:marisa@ifgr.org).

Questions may be directed to Marisa Reed  
at [marisa@ifgr.org](mailto:marisa@ifgr.org) or by calling (616) 942-5553.

### Part-time Program Director

Interested applicants send resume to [Marisa@ifgr.org](mailto:Marisa@ifgr.org)

#### Primary Responsibilities

- Strategize, develop and implement community and special event programming
- Assist in mission trips pre and post programming
- Manage PJ Library and PJ our Way administration tasks including new subscription applications and renewals as well as develop and staff PJ Library programming
- Develop and maintain programs with community partners
- Cultivate effective relationships with board members, committee members, volunteers, donors, PJ Library families and colleagues
- Assist in all programs as needed
- Act as welcome ambassador for new community members and maintain Ambassador program
- Post and update social media content
- Assignments may include support to or collaboration with other departments as needed

#### Required Skills and Abilities

- Bachelor's Degree in Social Work, Business, Jewish Studies, Human Behavior, Communications or equivalent preferred
- Strong team player
- Passionate about supporting and strengthening Jewish identity and connection to Grand Rapids Jewish life, Federation, and Israel
- Event programming experience
- Familiarity with Jewish culture and the Jewish community
- An ability to handle multiple projects in an efficient and effective manner
- Must be able to work some evenings and some weekends as program schedule requires
- Strong interpersonal, communication and organizational skills
- Strong working knowledge of Microsoft Office, and social media tools. Knowledge of Excel preferred

**WE'RE  
HIRING!**

# Cultural Council

July 2018



Cultural Council is assembling another inspiring year of programming for our 50th! We welcome new members who would be interested in joining this committee which plans and carries out events during the year.

*Our mission statement: The Jewish Cultural Council of Grand Rapids aims to foster greater awareness of Jewish culture in West Michigan by providing a vast range of quality programs with Jewish content. These programs highlight the arts, learning, current events, Jewish traditions and ideas and their impact on universal values. The programs are intended to appeal to Jews and non-Jews alike.*

2017-2018 Season brought us:

- Genealogist, Jennifer Alford, helped us research our roots.
- Educator, Orly Wahba brought her *Kindness Boomerang* to Grand Rapids.
- Comedian, filmmaker Avi Liberman had us laughing in downtown Grand Rapids.
- Journalist, Political Analyst, Micah Halpern shared insight about current Middle East politics.

We would like to thank the committee members:

**Mario and Talia Atias, Burt Bach, Julian Joseph, Mort Zukerman**

Please let us know if you would like more information: [info@jfgr.org](mailto:info@jfgr.org).



Name \_\_\_\_\_

Address \_\_\_\_\_

City \_\_\_\_\_

State/Zip \_\_\_\_\_

Email \_\_\_\_\_

### ***Membership Benefits and Privileges***

- \_\_\_\_\_ Underwriter, \$500 or more: Free admission to all programs for five adults
- \_\_\_\_\_ Patron, \$250 -\$499: Free admission to all programs for four adults
- \_\_\_\_\_ Sponsor, \$125-\$249: Free admission to all programs for three adults
- \_\_\_\_\_ Family membership, \$100: Free admission to all programs for one two adults
- \_\_\_\_\_ Individual, \$50: Free admission to all programs for one adult

Please mail this form with your check to:

The Jewish Federation of Grand Rapids  
Cultural Council - Spectrum Series  
2727 Michigan St. NE  
Grand Rapids, MI 49506

Tickets will be mailed to you upon receipt of your check. For questions regarding your tickets, please call The Jewish Federation office at **616.942.5553**

**\*Tickets to individual events are \$15 for adults, \$5 for college students and children up to 18 are free.**

*\*Ticket prices may vary for some events*

Enclosed is my check for \$\_\_\_\_\_

Payable to **The Jewish Cultural Council**

JEWISH FEDERATION OF GRAND RAPIDS • COMMUNITY LEADERSHIP MISSION TO ISRAEL

JEWISH FEDERATION OF GRAND RAPIDS  
JANUARY 13-20, 2019

## THE ISRAEL TRIP

From **\$2,789** land only

### INCLUDES

- 6 nights' accommodation at select hotels
- 6 days of touring in a luxury, air-conditioned bus with licensed, English speaking tour educator
- 1 group transfer and assistance to and from the airport
- All site entrance fees and program fees as per itinerary
- Meals: daily breakfast, 2 lunches, and 4 dinners
- Portage at the airport and hotels



**JUST  
GO.**

telling the story  
of Israel and the  
Jewish World.

For more information, please contact Marisa Reed, [marisa@jfg.org](mailto:marisa@jfg.org) tel. 616-942-5553

# Community

Annual JFGR Community Picnic had about 100 in attendance. There were Hamster Ball races, bounce house, face painting, bubble blowing activities. For more pictures or (better yet) to check out the Hamster Ball videos go to our Facebook page. Let us know how we can make next year even more fun by contacting Ann at [ann@ifgr.org](mailto:ann@ifgr.org) or 616-942-5553.



A look back to what was published on page 7 in the July Shofar of 1998.

The Shofar

Page 7

## Resettlement News

### Chernobyl Nuclear Accident Victims Offered Health Care Information

This year will mark the 13<sup>th</sup> anniversary of the Chernobyl nuclear accident, one of the worst disasters of all time. Since that fateful day in April 1986, more than 250,000 immigrants, most from the Ukraine, Belarus, and the Bryansk oblast of the Russian Republic, have relocated to the United States and Canada. They face a life of uncertainty and a constant threat of illness.

In 1992, Texas Hadassah Medical Research Foundation (THMRF), along with researchers from Baylor College of Medicine established a registry to keep track of Chernobyl victims who have relocated to the United States and Canada. It was thought that a registry could identify victims for closer scrutiny for radiation-related illness and remove some of the uncertainty by letting them know what risks they face. The goals of the registry include:

- To register US immigrants from the Former Soviet Union who were exposed to the radioactive aftermath of the Chernobyl Nuclear Power Plant Disaster.
- To collect information that will document the health status of these individuals over time.
- To provide medically and scientifically sound information to those affected, their health care providers, and key public policy makers.

An article in the August 2, 1995 issue of *The Journal of the American Medical Association (JAMA)* warns that the health status of approximately 1 million immigrants in the United States and Israel may have been adversely affected by radiation exposure as a result of the Chernobyl nuclear power plant disaster and cleanup efforts. Many of these immigrants suffer from the fear that they have radiation-induced illness. Based on a review of the literature and experience from the US National Chernobyl Registry Coordinating Center, the AMA recommends to health care providers that those at risk should receive routine physical examination, with particular attention to the thyroid gland. Adults should receive regular cancer screening as well as routine blood chemistry tests, thyroid function tests, complete blood cell count, and urinalysis. Children should be examined regularly with attention to the thyroid and overall body growth. It is reasonable for children to undergo thyroid studies, a complete blood cell count, or neuro-psychiatric testing if there is clinical suspicion of a disorder. Given the long latency period for disease induction by radiation exposure, it is still too early to fully assess and draw conclusions concerning the possible health effects of the Chernobyl disaster, and long-term follow-up of all potential affected individuals is important.

If you were possibly exposed to radiation from the Chernobyl accident in April, 1986 and are interested in the registry, you can obtain information sheets from the Jewish Community Fund office. You may come in or ask to have a copy mailed to you. Please contact Gayle Tolsma at 456-5553.

### Naturalization Information Available

If you are looking for help with naturalization procedures or regulations, call Jewish Community Fund at 456-5553 and we will help you find the answers you need.

### Save the Date



Plan ahead to attend the 3<sup>rd</sup> annual  
**Resettlement Picnic**

Sunday, August 23

Watch *The Shofar* for details.

## AHAVAS ISRAEL'S CORNERS OF THE FIELD GARDEN

No experience is needed to work in the garden. You bring some gloves and your energy. Please email Allyson Cole-Strauss at [garden@AhavasIsraelGR.org](mailto:garden@AhavasIsraelGR.org), or Mary Kaneti at [mcubed4300@gmail.com](mailto:mcubed4300@gmail.com) for information about helping to feed the hungry.



Thank you!

## ZENTANGLE CLASS

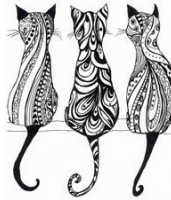
**ZenGems - Thursday, July 19(6:30pm-8:30pm)**

Join us for another fun Zentangle-based class! In this session, learn how to make colorful "polished" gems on paper using colored pencils and markers. Then you will create a beautiful tangled setting for your ZenGem.

**BRING:** your basic Zentangle tools and a black Micron 01 (extras will be available if you don't have an 01). Colored pencils, markers, practice Apprentice tile and a Zentangle tile will be provided. If you are new to

Zentangle and would like to come 1/2 hour early to get an overview of Zentangle, please let me know. Contact Leah Sauer to register - [leahsauer@live.com](mailto:leahsauer@live.com), 616-805-3778. Cost is \$22.00 and for new people \$25.00. Both include materials. Make checks payable to Ahavas Israel.

**LOCATION:** 2727 Michigan St. NE, back entrance.



## Lunch Bunch: Rose's

550 Lakeside Drive SE  
Thursday, July 19, 2018  
11:30am  
Cost: \$10

RSVP's a must to (616)942-5553  
Rides available by calling Ann (616)942-5553 x206  
Are you recently retired and/or miss gathering with fellow members of the Jewish community in a casual environment? Join us!

## BETZALEL ART GROUP

**Thursdays, 2:30pm - 4:00pm at  
Ahavas Israel, 2727 Michigan NE.** For further information contact Pat Weller: 616-453-2954 or [atandfred@tds.net](mailto:atandfred@tds.net)



## Jewish Business Network

The Jewish Business Network is going on hiatus until fall. We welcome your suggestions or comments over the summer. Would you like to help plan these monthly networking lunches, assist securing speakers? Please let us know: [Cathy@JFGR.org](mailto:Cathy@JFGR.org).

## Hadassah Book Club

Hadassah Book Club met on the 13th of June 2018. Judy Zuppke was our hostess of the month. Our group had a wonderful discussion, led by Flory Silverstein, about the book, "Waking Lion". Thank you Judy for a lovely afternoon in June.

**Hadassah Book Club Next Meeting  
August 8th, 2018**

Location: Marilyn Lystad's Home  
4726 Cranwood SW

Time: 4:00pm

Phone: 616-531-1616 Please call Marilyn and let her know you will be attending.

**Book to read..... *The Girl From Venice*  
Written by.....Martin Cruz Smith**

Looking Forward to seeing you soon.  
Books will be available at Shulers Books & your local library

Your Bookends for Information!  
Flory Silverstein..... 616-949-5766  
Sue Remes.....616-949-3505



## INTERFAITH AND INTERWOVEN

**Wednesday mornings 10:00am at Temple Emanuel.**



Please join women of all ages (and handcraft abilities) from all faith and non-faith traditions to build friendships while our hands are engaged in creating items for ourselves, our families and/or charitable organizations. Bring knitting/crocheting supplies that you have to use for yourself or to share.

We are currently accepting donations of knitting and crocheting supplies and washable yarn. For more information please contact Deet at [deetnewman@gmail.com](mailto:deetnewman@gmail.com)

Beit Sefer B'yahad / United Jewish School

1715 East Fulton Grand Rapids, MI 49503

Hasia Monselise School Director 616-459-5976

[UJShasiamonselise@gmail.com](mailto:UJShasiamonselise@gmail.com)

[www.unitedjewishschool.org](http://www.unitedjewishschool.org)



## Temple Emanuel

### Your Opinion Matters & Brunch

Each month Chef and Moderator Jim Siegel serves a hot meal and a hot topic. For Sunday July 29th at 10:00am the topic is: To tattoo or not to tattoo? This is the question! Tattooing and piercings have become extremely fashionable, but may violate our tradition's demand that we treat our bodies with reverence and that we not inflict unnecessary physical damage (*chavalah*) upon ourselves. How, does one define "reverence" and "unnecessary damage?" Brunch and debates are free of charge, but Jim does need to know how many places to set at the table. RSVP to Jim at [jims@siegeljewelers.com](mailto:jims@siegeljewelers.com).

### Gardeners Needed

Join us in Ahavas Israel's Corners of the Field Garden as we plant and harvest vegetables for Temple Emanuel's food pantry, and for Baxter Center Food Pantry. We meet Sunday mornings starting at 8:30am. We supply tools and planting materials. You bring gloves and your companionship. There are tasks for people of all abilities. For more information please email [mcubed4300@gmail.com](mailto:mcubed4300@gmail.com)



## Wanted:

Dynamic teachers for 2018-2019

Please contact

[ujshasiamonselise@gmail.com](mailto:ujshasiamonselise@gmail.com)

or 616-459-5976



### ADVERTISING IN THE SHOFAR

The Shofar is delivered to nearly 700 subscribers, 12 times a year. Space is limited. Place your ad today!

Advertising Rates:

SIZE:	SIX ISSUES:	TWELVE ISSUES:
3.5" X 4"	\$900	\$1440
3.5" X 2"	\$600	\$960
2.5" X 1.7"	\$450	\$720

Access is also available online at [Jewishgrandrapids.org](http://Jewishgrandrapids.org). Send all inquiries and advertising files to [marisa@ifgr.org](mailto:marisa@ifgr.org)

### Food Bank Update

The next distribution day for the food bank will be July 18th. We will need volunteers for the setup on July 17th at 6:30pm, which takes about an hour. On July 18th, we will need volunteers at 8am for last minute setup. We are usually finished by 10:30. **On the wish list for this month:** diapers (any size) and baby wipes. To help feed the hungry, please contact Burt [bbach2137@gmail.com](mailto:bbach2137@gmail.com) or Mary at [mcubed4300@gmail.com](mailto:mcubed4300@gmail.com)



**Feeding the Community**



# Congregational

July 2018

## Chabad House

### **Gan Israel Day Camp**

Sign your child up for A Jewish summer experience of a lifetime! Camp Gan Israel is designed to make your child's summer vacation fun, stimulating and entertaining! The Camp Gan Israel experience is a unique combination of Jewish pride and fun!

**DATES: JUNE 25<sup>TH</sup> - JULY 13<sup>TH</sup> 2018 | 9:00am - 3:30pm**

**Kiddy Camp:** Ages 3–5 | **Main Division:** Ages 6–10  
| **Pre-Teen Division:** Ages 11-12

To registration or for more info, please contact Rivka at (616)206.9654 or email us at [campganisraelgr@gmail.com](mailto:campganisraelgr@gmail.com)

### **Caffeine for the Soul!**

Join other Jewish women for learning and inspiration and delve into the Torah's timeless wisdom. This class is based on the weekly Torah Portion, studied through the prism of Kabbalah to attain new insights into ourselves, and the world around us. Enjoy a coffee, delicious pastries and great discussion!

### **WEDNESDAY MORNINGS AT 9:30am**

2160 Romence Dr. NE. Caffeine for the Soul is a project of the Jewish Women's Circle.

The JWC of Grand Rapids is an ever-growing group of women from the Grand Rapids area who come together to socialize, laugh, learn and discover the power of Jewish femininity in today's world. JOIN US!

### **Gan Yiladim Preschool - Kindergarten**

Registration is now open for the fall of 2018! Our children learn the "specialness" of being Jewish. Through stories and discussions, the precious legacy of their uniqueness as Jews is transmitted. Gan Yiladim School takes the best of both worlds – secular and Judaic – and blends them into a program that is at once rich, fulfilling, and stimulating environment. For children ages 2-6

For more information about our program, please feel free to contact us at 616-957-0770

### **Operation Thunderbolt ~ The Miracle at Entebbe**

**SAVE THE DATE: SUNDAY, OCTOBER 14<sup>TH</sup> 2018 7:00pm.** Join us for an exclusive evening with Elite IDF Commander **Sassy Reuven**. Sassy was one of the first commanders to land in Entebbe. He will share with us his first hand account of how Israel pulled off the greatest hostage rescue in history.

For more information or sponsorship opportunities, please contact Sarah at 616-375-9404

## Ahavas Israel

### **Start-Up Wants to Grow Kosher Meat in a Lab (The Atlantic, 9/16/16)**

Is lab-grown meat kosher? From the point of view of kashrut, is it really meat? Can one eat a lab-grown meat cheeseburger? Is lab-grown pork kosher? Explore these and other questions in a home learning program on **Sunday, July 8, at 7:00pm, hosted by Buddy and Judy Joseph, 2609 Berwyck SE.** RSVP to Rabbi Krishef to let him know that you are coming.

### **Tisha B'Av**

Tisha b'Av -- A day of Lamentations, mourning, and fasting for the destruction of the Temple and subsequent exiles of the Jewish people. Join us on: Saturday night, July 21, at 10:15pm., for Ma'ariv and the reading of the Biblical book of Eikha (Lamentations); Sunday morning, July 22, 9:00am, for morning minyan with special inclusions for Tisha B'Av. (Fast ends at approximately 9:00 p.m.)

### **Kabbalat Shabbat, Friday evening, July 6, August 3, September 7 -- 6:00pm**

Join us for a monthly service to welcome Shabbat on the first Shabbat of each month.

**Torah Study Shabbat and Abbreviated Shabbat service - July 28, August 25, September 22**  
**Please join us for a Torah Study Shabbat / Abbreviated Shabbat service on the 4<sup>th</sup> Shabbat of the month. A new feature this summer - pre-service chanting, led by David Reifler.**

This past January, David Reifler completed an 18-month series of four chanting retreats with Rabbi Shefa Gold entitled Kol Zimra. On June 23, July 28 and August 25, beginning at 10:15am, David will lead a guided chanting of Modeh Ani in the Chapel for fifteen minutes prior to the beginning of our shortened Shabbat morning service.

The schedule is:

9:30am Torah study (lobby)

10:15am pre-Service chanting with David Reifler (chapel)

10:30am Service

11:55am (approximately) Kiddush

# Endowment

Life cycle times, both happy and sad, are traditional times to make donations to Jewish causes. You can make a donation of \$10 or more to the Jewish Federation of Grand Rapids in honor or in memory of members of our community. We then will acknowledge that donation with a card to that individual or family. This is a wonderful way to send your good wishes and be able to fulfill the mitzvah of tzedakah.

Please be sure to indicate what the occasion is and who is to receive the card. Please specify which of the following funds you would like your donation to be credited to:

**Woman of Valor Fund** To honor the women in our lives who have made a difference personally, locally or nationally.

**Federation General Endowment/L'Dor Vador Fund** To help ensure the continued work of the Jewish Federation of Grand Rapids for now and the future.

**Julian and Judith Joseph Fund** To provide for local programming and events through the Jewish Federation of Grand Rapids.

**David and Susan Samrick Youth Scholarship Fund** To provide scholarships to Jewish sleepaway camps and experiences.

**Chuck and Maxine Shapiro Fund** To help ensure long-term aid to Israel and Jews around the world.

**Louis and Louise Weiner Fund** To help ensure local programming for seniors in the Grand Rapids Jewish Community.

**Jerry and Judy Subar Fund** To help ensure funding for overseas Jewish communities' needs.

**Leven Family Fund** To establish and provide Jewish facilities, and support for cooperative programming among the congregations that support Jewish education for our youth.

**Sam and Jane Kravitz Social Services Fund** To support Jewish social services in Grand Rapids.

**Donna G. Boorstein Memorial Fund** To help ensure funding for Jewish arts, culture and history in Greater Grand Rapids

**Lois and Sheldon Kahn Health Help Fund** To support health services for Jewish community members not covered by other financial resources

*Thank you for supporting the  
Grand Rapids Jewish Community*

## **David and Susan Samrick Youth Scholarship Fund**

In memory of Mitchell Simon, beloved son and brother

From Sandy, Cindy, Micky, and Mallory Simon

## **Chuck and Maxine Shapiro Fund**

In memory of Joseph Lubner

From Chuck and Maxine Shapiro

*Make a tribute gift to Thank, Honor, Memorialize  
friends and loved ones.*

**Homewatch  
CareGivers®**

**Life is better**  
when everyone feels connected,  
engaged, and appreciated

- Background checked caregivers
- Live person on-call 24/7
- Specialized training for caregivers
- Quality assurance visits to assess evolving care needs



**Start home care today.**  
[hwcg.com/grand-rapids](http://hwcg.com/grand-rapids)  
**Call 975-1980!**

## JFGR Endowment Fund Donation Form

Donation from: Name \_\_\_\_\_ Fund (pick from list) \_\_\_\_\_

Donor Address \_\_\_\_\_ In honor of \_\_\_\_\_

Donor City/St/Zip \_\_\_\_\_ In memory of \_\_\_\_\_

Send card to: Name \_\_\_\_\_ Notes: \_\_\_\_\_

Send card to address \_\_\_\_\_ **Send your donation and this form to:**

Send card to City/St/Zip \_\_\_\_\_ **2727 Michigan NE, Grand Rapids, MI 49506**

# The Shofar

A monthly publication issued 12 times a year.

Jewish Federation of Grand Rapids  
2727 Michigan NE  
Grand Rapids, MI 49506-1240

Send article text to: [Ann@jfgr.org](mailto:Ann@jfgr.org)  
Phone: 616.942.5553  
Fax: 616.942.5780  
[www.jewishgrandrapids.org](http://www.jewishgrandrapids.org)  
Email: [info@jfgr.org](mailto:info@jfgr.org)

**Next Issue's Information Deadline:  
July 15, 2018**



**Jewish Federation**<sup>®</sup>  
OF GRAND RAPIDS

THE **STRENGTH** OF A PEOPLE.  
THE **POWER** OF COMMUNITY.

## ***What's Happening Jewish Grand Rapids July 2018 Calendar of Events***

<b>6</b>	Kabbalat Shabbat Services at Ahavas Israel 6:00pm	<b>19</b>	Lunch Bunch to Rose's 11:30am - RSVP a must
<b>8</b>	Grow Kosher Meat in a Lab? Discussion at 7pm see page 10 for location	<b>21</b>	Tisha B'av service at Ahavas Israel 10:15pm
<b>11</b>	Caffeine for the Soul 9:30am (see page 10)	<b>25</b>	Caffeine for the Soul 9:30am (see page 10)
<b>18</b>	Food Bank Distribution 8:00am Caffeine for the Soul 9:30am (see page 10)	<b>28</b>	Torah Study and Abbreviated Shabbat Services at Ahavas Israel 9:30am
<b>19</b>	Zentangle Class at Ahavas Israel 6:30pm	<b>29</b>	Your Opinion Matters at Temple Emanuel 10:00am