



**Executive Director's Letter**

February 2014

Dear Friends,

As noted on these pages last month, the recent Pew Research Center study documented a surprising and dramatic increase in the number of American Jews. There may be an explanation for this rise that bodes well for our Grand Rapids Jewish community.

Jewish pride.

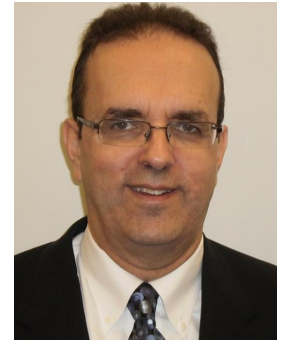
The study had some interesting data in regard to an important issue - how American Jews feel about being Jewish. A near unanimous 94% of all surveyed who identified themselves as Jewish said they were "proud to be Jewish." (This and related statistics can be found in the Pew study linked to our website at [www.jewishgrandrapids.org](http://www.jewishgrandrapids.org)).

The most encouraging aspect of this sense of pride in Jewish identity, in my view, is that it is across the board. Old or young, religious or not, expressed very high levels of Jewish pride, including 83% of Jews the survey labeled with 'no religion' who nonetheless indicated they are proud of being Jewish.

Why are the positive feelings in regard to being Jewish so high? The answer could be as simple as it's *cool to be Jewish in America*. The wide acceptance of Jews in the United States is stunning when compared to the overt anti-Semitism dating back to the World War II era and earlier. While anti-Jewish sentiments remain in our nation's bloodstream and I suspect always will, it is heartening to realize that it is no longer widely acceptable for Americans to be openly anti-Semitic.

If more of us are feeling good about being Jewish, this affords us a great opportunity in Grand Rapids to strengthen our community. We already have a strong base, including congregations with a long and varied history of Jewish religious practice; a proven commitment by our community in time and treasure to our fellow Jews at risk; vibrant cultural and educational programming, particularly impressive for a small Jewish community; and strong support for the State of Israel dating back to its inception nearly seven decades ago.

*Continues on page 2*



**Our Mission**

Jewish Federation of Grand Rapids unites the local Jewish community to sustain and strengthen Jews locally, in Israel, and around the world.

This mission is accomplished by providing services to the community and through fundraising and allocation efforts.

**Like Jewish Federation of Grand Rapids  
on Facebook!**

**Inside this issue:**

Federation News	1-3,8-9
Senior News	3
Community/Cultural Council	3-7
United Jewish School	9
Congregational	10
Endowment	11

**Jewish Federation of Grand Rapids**

2727 Michigan NE  
Grand Rapids, MI 49506  
616.942.5553  
616.942.5780 fax  
info@jfgr.org  
www.jfgr.org

**Officers**

*Chair*  
Claude Titche III  
*Vice Chairs*  
David Alfonso  
Dan Hurwitz  
Judith Joseph  
Karen Padnos  
*Past Chair*  
Greg Kaufman  
*Executive Director*  
Michael Present

**Board of Directors**

Davida Dennen  
Machelle Hammond  
Andrew Samrick  
Audrey Sundstrom  
Lanny Thodey  
Marni Vyn  
John Winestone  
Chad Zagel

**Ex-Officio Members**

Congregation Ahavas Israel  
Rabbi David Krishef  
Bill Lewis, President  
  
Temple Emanuel  
Rabbi Michael Schadick  
Mitchell Kahn, President  
  
Chabad House  
Of Western Michigan  
Rabbi Yosef Weingarten

\$500,000  
—  
\$400,000  
—  
**\$383,820**  
—  
\$300,000  
—  
\$200,000  
—  
\$100,000  
—  
\$0

**330 Donors**  
**\$383,820**

Your donation to JFGR is 100% tax deductible. Payments can be made by cash, check, credit card or stock.

Pay in full or set up installments. You can even pay on line at [www.jewishgrandrapids.org](http://www.jewishgrandrapids.org)

Note: any new gift or increase is matched dollar for dollar by a challenge grant  
\*Total does not include matching grants.

Continued from page 1

We can all feel proud of these communal accomplishments. Our challenge is to build on this base, appealing to the sensibilities of our diverse, local Jewish community. To keep our community strong, i.e. to not only be a group of individuals with strong Jewish pride, we must continue to develop a range of programs and activities with broad appeal so individuals with various reasons for their Jewish pride will choose to participate in our community.

In the wake of the Pew study, it is apparent this is a fundamental challenge for not only our local Jewish community, but around the country as well. Your Federation is committed to working with our community, both individuals and organizations, to meet this challenge. We can only do this together. As always, I invite your thoughts and ideas regarding a new generation of programming and activities, meaningful to you, to help us keep our community strong.

Best regards,

Mike  
[mike@jfgr.org](mailto:mike@jfgr.org)



**ANNUAL CAMPAIGN**



Jewish Federation of Grand Rapids  
2727 Michigan NE  
Grand Rapids, MI 49506  
(616) 942-5553  
[www.jfgr.org](http://www.jfgr.org)

**Live Generously.**

Name \_\_\_\_\_

Address \_\_\_\_\_

Please cut out this pledge card, fill it in and send it to the Federation office.

I HEREBY PLEDGE TO THE FEDERATION ANNUAL CAMPAIGN THE SUM OF: \$ \_\_\_\_\_

\_\_\_\_\_  
DONOR'S SIGNATURE

Method of Payment:  Check  Stock

Please Charge my:  MasterCard  Visa  
 Discover  American Express

Please consider a 10% increase

\_\_\_\_\_  
Card Number  
Exp. Date: \_\_\_\_\_

## L'dor Vador Endowment Update

### *Growing the Community's Endowment Funds*

The L'dor Vador Endowment Committee met and reviewed the investment policy statement and results for 2013. The committee elected to make some changes to some of the investments in accordance with the investment policy. The L'dor Vador endowment funds totaled \$4,097,810 as of December 31, 2013, growing from \$3,625,503 at the end of 2012. Of note, the funds' balance has been increased by contributions and reduced by annual distributions requested by many of the funds' beneficiaries. The funds generated a weighted average return of 13.80% during 2013.

Please consider forming a new fund or contributing to an existing fund. To donate, contact the Jewish Federation of Grand Rapids, Congregation Ahavas Israel or Temple Emanuel. If you have any questions or would like more information, please contact Mike in the Federation office at [\(616\) 942-5553](tel:6169425553) or [mike@jfgr.org](mailto:mike@jfgr.org).

## Seniors/Community

### LUNCH BUNCH

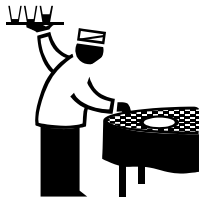
Thursday, February 13

Marco's

884 Forest Hills Ave

11:30 AM

Cost \$8



RSVP by

Tuesday, February 11

to Ann at 616-942-5553

Transportation is also available

by calling Ann

### LUNCH BUNCH SAVE THESE DATES:

March 20 ~ April 10 ~ May 15

at 11:30 AM

Taking suggestion for places to eat.

616-942-5553

SAVE THE DATE!!!



Community

PURIM CARNIVAL

Sunday, March 16th

Temple Emanuel



### Hadassah Book Club

February 12 - 7:15 PM

"The Children of Willesden Lane"

by Mona Golabek & Lee Cohen

Host: Sue Remes

3403 Burton Ridge SE

RSVP to 616-949-3505

Books available at SCHULERS BOOKS,

28th Street

As always, your faithful bookends,

Sue Remes 616-949-3505

Flory Silverstein 616-949-5766



Answer: During [leap years on the Hebrew calendar](#), Purim is celebrated in the second month of Adar. (The [Karaites](#), however, celebrate it in the first month of Adar.) The 14th of the first Adar is then called *Purim Katan* ("Little Purim" in [Hebrew](#)) and the 15th is *Shushan Purim Katan*, for which there no set observances but have a minor holiday aspect to it. The distinctions between the first and the second Purim in leap years are mentioned in the [Mishnah](#).  
[http://en.wikipedia.org/wiki/Purim#Purim\\_Katan](http://en.wikipedia.org/wiki/Purim#Purim_Katan)



Jewish Cultural Council ~ 2014 Spectrum Series

Presents



Klezmer Music

*A hybrid of Eastern European Jewish folk music, American swing, Yiddish theater tunes and Israeli horas. Yiddish Cup, formed in 1988, is one of the Top Ten Klezmer bands in America. The group has played throughout the United States at festivals, colleges and numerous Jewish gatherings.*

*Yiddishecup will lead us in dancing while entertain us with their lively music.*

**Date: Sunday, February 9, 2014**

**Time: 4:00 p.m.**

**Congregation Ahavas Israel**

2727 Michigan NE, Grand Rapids

Contact Sari 616-942-5553 Sari@jfggr.org

**~Ticket Prices~**

**\$15 for adult;**

**\$5 for College Students;**

**Children up to age 18 free**



\* RSVP is recommended but not required!

**DESSERT RECEPTION TO FOLLOW**



**Jewish Federation®**  
OF GRAND RAPIDS

THE STRENGTH OF A PEOPLE.  
THE POWER OF COMMUNITY.

[www.jewishgrandrapids.org](http://www.jewishgrandrapids.org)



## BREAD BAKING DEMONSTRATION AND TASTING.

January event at Downtown Market.

Master Baker Shelby Kibler from “Field & Fire” taught us his secrets to baking great Challah and Rye bread.



# Save the Date

**Sunday, March 23, 2014**

**LAVON MERCER**

**4:00 PM**

**An American basketball player in Israeli tells his story.  
Temple Emanuel**

LaVon Mercer is an American-Israeli retired basketball player. He played the center position. In college, Mercer played for the University of Georgia Bulldogs and was selected by the San Antonio Spurs in the third round of the 1980 NBA Draft. In the 1980s and 1990s, Mercer played professional basketball in Israel for [Hapoel Tel Aviv](#) and [Maccabi Tel Aviv](#). LaVon Mercer led his teams to six [Israeli Championships](#) (1989, 1990, 1991, 1992, 1994, and 1995) and five [Israeli State Cups](#) (1984, 1989, 1990, 1991, and 1994). While playing for Maccabi, the club reached the Euroleague finals in 1989 and the Euro league semifinals in 1991. He is currently the women's basketball coach at [Spellman College](#) (2009).





**PLEASE PLAN TO ARRIVE EARLY.** That means even if you are holding a flex pass ticket, seats are not guaranteed later than thirty minutes prior to movie time. **Flex pass tickets are only available until May 2nd.**

The Film Festival also offers members of the community an opportunity to become an individual sponsor of the Jewish Film Festival. Please read about the benefits of becoming a financial supporter below.

**Individual Sponsors Get Great Benefits!**

**Director: (\$500.00)** receive two flex passes (16 admissions), recognition in all publications, and four admissions to all private receptions, dinners and events.

**Producers: (\$250)** receive two flex passes (16 admissions), recognition in all publications and two admissions to all private receptions, dinners, and events.

**Actor: (\$100.00)** receive one season punch card (8 admissions) and recognition in the program booklet.

**Film Fan:** If you would like to financially support the Jewish Film Festival and do not see an amount that interests you, please feel free to send a contribution in any amount to the Federation office. You will be listed in the program booklet.

The 2014 Jewish Film Festival is once again bringing special movies to the Grand Rapids community. The committee has been previewing movies and planning special programs. As in previous years, the Film Festival will be held at Celebration! North Cinemas. Watch for more details about the festival events in our community mailings.

The Film Festival is offering special rates through a **flex pass** (eight admissions): the flex pass is **\$36.00**. Flex pass ticket holders will have seats reserved until **THIRTY MINUTES** prior to the movie beginning. At that time, tickets will be sold for all seats.

*I would like to be a Film Festival Sponsor*

**NAME:** \_\_\_\_\_ **PHONE:** \_\_\_\_\_

- \_\_\_\_\_ Film Festival Director (\$500.00)
- \_\_\_\_\_ Film Festival Producer (\$250.00)
- \_\_\_\_\_ Film Festival Actor (\$100)

- \_\_\_\_\_ Film Festival Fan
- \_\_\_\_\_ Flex Pass (\$36.00)

Mail this form and your check to:  
**Jewish Federation of Grand Rapids**  
 2727 Michigan NE, Grand Rapids, MI 49506

# FAMILY FUN EVENT

For All Ages

Join us for ice skating fun, or just watch the skaters from the warmth of the observation room overlooking the rink. Complimentary light refreshments.



**Sunday, February 23, 2014**

**1:00 PM - 3:00 PM**

**Patterson Ice Arena**

2550 Patterson Ave SE

(between Breton and 28th Street)

\$5.00 per skater

RSVP to Cathy: 616-942-5553

or email Cathy@jfgr.org

## SHALOM GRAND RAPIDS !!

*A new program of the Jewish Federation*

- \* Would you like to become an ambassador to welcome people who are new to the Jewish community, or not currently involved?
- \* If you know about somebody new to the Grand Rapids community, please let us know. "Shalom Grand Rapids" would like to welcome them.

To sign up or receive additional information about the program, contact Sari at the Federation office:  
616-942-5553 or Sari@jfgr.org

# WELCOME

## Jewish Community Business Forum

February 20

12:00 - 1:00 PM

El Barrio

545 Michigan NE

Everyone is Welcome!

A good networking opportunity to discuss business principles and to stay aware of resources available in our community.



## Jewish Women's Professional Network

We meet monthly for networking. All women are invited - whether working outside the home, thinking of returning to the workforce, in career transition, or a community volunteer.

For more information, please email  
marnivyn@yahoo.com or  
phone 616-774-8644.



**February 5**

**12:00 PM**

*Olive's*

2162 Wealthy St. EGR

## Job Opening

The Jewish Federation of Grand Rapids is seeking an experienced **Bookkeeper** on a part-time basis to work in a collaborative and flexible work environment. Familiarity with database management in a nonprofit environment is a plus. This position is responsible for all accounts payable and accounts receivable for the organization. You will also be completing journal entries, maintaining and updating QuickBooks records and other tasks as assigned.

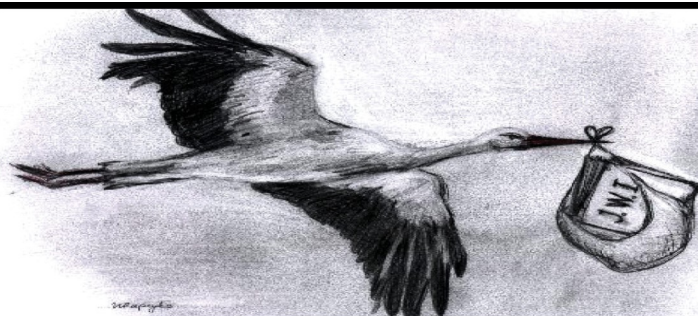
### The bookkeeper job duties include:

- Accounts payable and receivable
- Budgets and other financial reports
- Preparing and updating QuickBooks records
- General office duties and special projects as needed

### Qualifications:

- Proven proficiency in QuickBooks
- Bookkeeping experience required
- Nonprofit experience and accounting education preferred
- Nonprofit database management experience a plus

Resumes may be emailed to [mike@ifgr.org](mailto:mike@ifgr.org) or sent to: Michael Presant, Executive Director, Jewish Federation of Grand Rapids, 2727 Michigan NE, Grand Rapids MI 49506. Questions may be directed to [mike@ifgr.org](mailto:mike@ifgr.org) or by calling (616) 942-5553.



— STILL AVAILABLE —

## The 2013-2014 Jewish Community Roster

Available (for \$9 each) at

**Ahavas Israel or Temple Emanuel**

or call

**Lanny Thodey: 956-6161**

**Eileen Enoch: 949-6444**

## Jewish Theater Grand Rapids Next Production



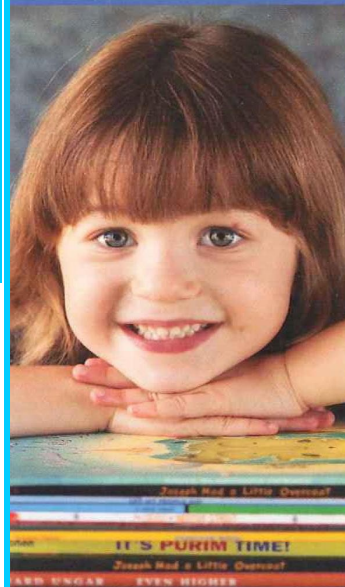
*Miss Daisy*  
March 20-30, 2014

Tickets sales begin  
March 3, 2014 for season  
subscribers  
March 10, 2014 for all  
others

## PJ Library is here!

**Thank you! To the Ravitz Foundation  
and Rosenzweig-Coopersmith  
Foundation.**

A GIFT for  
JEWISH CHILDREN  
and their families.



**WHAT?** The PJ Library ("PJ" for "pajamas") program offers the gift of free, high-quality Jewish books and music each month to children ages 6 months through 8 years all across North America. The program is also available to children ages 6 through 8 in some communities.

**WHY?** PJ Library books celebrate important aspects of Jewish culture, values and tradition, and become cherished bedtime stories.

**HOW? Signing up is easy!**  
To sign up for PJ Library visit  
[www.pjlibrary.org](http://www.pjlibrary.org).

*PJ Library is a gift from your Jewish community in partnership with local philanthropists and the Harold Grinspoon Foundation.*

**PJ Library**

[www.PJLIBRARY.org](http://www.PJLIBRARY.org)

A PROGRAM OF THE  
HAROLD GRINSPOON FOUNDATION



## CAN YOU BELIEVE THAT IT IS ALREADY TIME TO THINK ABOUT SUMMER CAMP SCHOLARSHIPS APPLICATIONS!

Do you know a child who plans to attend a Jewish summer camp? They may qualify to apply for a camp scholarship through the David and Susan Samrick Youth Scholarship Fund. Applications are available on line at [www.jewishgrandrapids.org](http://www.jewishgrandrapids.org) or upon request, and are due by March 3, 2014. Please contact the Jewish Federation at 616-942-5553.

-Ann Berman

Director of Social Service Resources

*Note: All applications will be reviewed by a Scholarship Committee and held in the strictest confidence.*



Camp Gan Israel was founded in 1956 by the Lubavitcher Rebbe, Rabbi Menachem M. Schneerson, of righteous memory.

Today the Camp Gan Israel network serves the Jewish World with chapters in more than forty countries.



### Beit Sefer B'yahad/United Jewish School

1715 East Fulton Grand Rapids, MI 49503

Pam Rush School Director 616-459-5976

[pam@templemanuelgr.org](mailto:pam@templemanuelgr.org) [www.unitedjewishschool.org](http://www.unitedjewishschool.org)

### UJS Board:

The school board is comprised of representatives from Ahavas Israel and Temple Emanuel. Each congregation has seven representatives.

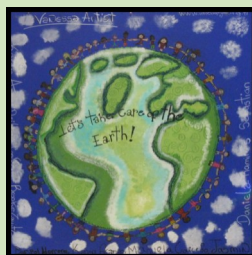
- Erica Wikander, co-chair
- Allyson Strauss, co-chair
- Jean Barkin
- Paula Bojsen
- Wende Cook
- Jan Fonger
- Sharlena Lovy
- Rhonda Pappas
- Carey Potter
- Lisa Rapoport
- Elisabeth Rosewall
- Amy Singer
- Abby Sorota
- Amy Winkelman

*UJS welcomes new teachers:*  
**Chana Weingarten - Pre-K**  
**Aaron Katz - 8th grade.**

**Please take the time to remember the school in your contributions. We have a beautiful tribute card that can be sent in memory of someone, in honor of a special occasion or just for a simple 'thank you'.**

### UJS theme for January/February Shomrei Ha'adamah Guardian of the Earth

**As an extension of the UJS curriculum Rabbi Krishef visits all the classes once a month to present a program of middot or mizvot. The theme for the month of January is Shomrei Ha'adamah. We should be guardians of the earth. Take care to recycle, plant trees, turn water off, turn lights off, etc.**



### **Plant Your Roots in Israel with trees for Tu B'shevat**

**On Tu B'shevat we celebrate the New Year for trees, eat wonderful fruits that grow in Israel and pray for a fruitful year. Please join students all over the world by planting a tree in Israel through Jewish National Fund. Tzedakah monies at UJS for the month of January and February will be sent to Israel to plant trees. [www.jnf.org](http://www.jnf.org) for more info.**

### UJS Calendar

- 2-16-14 No Sunday School mid-winter break
- 2-19-14 No mid-week
- 2-23-14 UJS Open House

**School closings:** Please tune in to WZZM 13 and WOOD TV 8 for UJS closings. It will be listed as United Jewish School. You may also check their websites. There will also be a message on the school answering machine if classes are cancelled due to bad weather. 616-459-5976 x3

**Congregation Ahavas Israel**

**SANCTUARY SHABBAT** - special speakers every first Shabbat of the month

**February 1** - Annaflora Somers, "A story of Refugee Resettlement - a personal narrative" Bohame is a refugee from the Congo who needed help in bringing his wife and children to join him in Grand Rapids. Annaflora met him while working at the YMCA and offered to assist him. Annaflora will present Bohame's story.

**March 1** - Cantor Marisa Krishef and the Shir Shalom Choir

**April 5** - Dr. Madelon Krissoff, "Taking Care of Your Elderly Parents - and Yourself!"

**August 2** - Shmuel Bowman, Executive Director, Lifeshield

**ADULT JEWISH LEARNING**

Monthly Adult Jewish Learning on Sunday mornings, co-sponsored by Ahavas Israel, Temple Emanuel, and the United Jewish School. All sessions begin with bagels and coffee at 10:00 a.m.

**February 9** - Jewish Sexuality - Marital Relations, Mikvah, and Homosexuality

**March 9** - Sex, Violence, and Jewish Identity: What They Didn't Teach you in Religious School about Purim

**March 30** - Pesah: Preparing for an Engaging Adult Seder with Children.

**April 27** - Jewish Food Ethics

**May 18** - Shavuot. A 1/2 hour presentation on the holiday, followed by a lesson in making blintzes.

**BETZALEL ART GROUP**

Wednesdays, 4:00 - 5:30 p.m., Room 1  
Join the fun at the Betzalel Art Group and be inspired by others as you work on your own projects. Bring your fiber art project or oil painting or any other art or craft you enjoy doing. Everyone is welcome. This is an open and flexible group, so come as your schedule allows. For more information, please contact Barb Christiaans, 531-1151 or [barben@iserv.net](mailto:barben@iserv.net).

**SHABBAT MORNING SCHMOOZE 'N SHMEAR:**

Complements of the Religious Life Committee, you are invited to come to shul just a little bit early to enjoy coffee and a bagel before coming into the service. Breakfast will be available from 9:15 to 10:30 a.m. Look for it in the Library or the Meeting Room.

**Chabad House****CHABAD KIDS CLUB**

Friday, February 14th

**Grand Chabad Kids Club Mexican Shabbat Dinner**

Join Chabad Kids Club's Mexican style Shabbat dinner for the whole family.

Location: Chabad of W. Michigan

Time: 5:45 PM Prepay \$8 per person - \$25 family

For more info or to RSVP call Chana 616-570-1742

**CTEEN**

**Sunday, February 9th 4:00 PM - 6:30 PM**

**Truth or Care****The Whole Truth and Nothing but the Truth?**

What's black and white and fun all over? Join the party at our CTeen Mime bash and explore when to speak up or stay silent. Send gifts to children of Jewish inmates and end their silent suffering.

To join Cteen or more info call Chana: 616-570-1742

**JLI CLASS: To Be a Jew in the Free World: Jewish Identity Through the Lens of Modern History**

Six Thursdays

Beginning 02/06/2014

7:30 PM - 9:00 PM

For more information visit us at [www.myjli.com](http://www.myjli.com) or call 616-957-0770

**Temple Emanuel****PADNOS VISITING LECTURER @ Temple Emanuel – Sunday, February 23.****J.P. Dessel, Associate Professor, University of Tennessee**

Biography: Professor Dessel specializes in the history and archaeology of the eastern Mediterranean and the ancient Near East. His research focuses on the rise of social complexity, urban-rural dynamics in the Bronze and Iron Ages, and ethnicity in the ancient world. He has participated in excavations in Israel, Turkey, Egypt and North America. He has directed the excavation of two village sites, Tell el-Wawiyat and Tell 'Ein Zippori, in the Lower Galilee of Israel.

**SUNDAY SCHOOL FOR ADULTS!****February 2<sup>nd</sup> 10:00 AM– ABC (Argue, Banter, Compromise)**

Brunch and controversial topics where differing opinions are encouraged; moderated by Jim Siegel. Suggestions for topics for discussion are welcome. RSVP to Temple Office.

**February 9<sup>th</sup> 10:00 AM- Jewish Sexuality**

Marital Relations, Mikveh, and Homosexuality as they relate to the Jewish faith and teachings

Life cycle times, both happy and sad, are traditional times to make donations to Jewish causes. You can make a donation of \$10 or more to the Jewish Federation of Grand Rapids in honor or in memory of members of our community. We then will acknowledge that donation with a card to that individual or family. This is a wonderful way to send your good wishes and be able to fulfill the mitzvah of tzedakah.

Please be sure to indicate what the occasion is and who is to receive the card. Please specify which of the following funds you would like your donation to be credited to:

**Woman of Valor Fund** (\$10 minimum contribution). To honor the women in our lives who have made a difference personally, locally or nationally.

**Federation General Endowment/L'Dor Vador Fund.** To help ensure the continued work of the Jewish Federation of Grand Rapids for now and the future.

**Julian and Judith Joseph Fund.** To provide for local programming and events through the Jewish Federation of Grand Rapids.

**David and Susan Samrick Youth Scholarship Fund.** To provide scholarships to Jewish sleep away camps and experiences.

**Chuck and Maxine Shapiro Fund.** To help ensure long-term aid to Israel and Jews around the world.

**Louis and Louise Weiner Fund.** To help ensure local programming for seniors in the Grand Rapids Jewish Community.

**Jerry and Judy Subar Fund.** To help ensure funding for overseas Jewish communities' needs.

**Leven Family Fund.** To establish and provide Jewish facilities, and support for cooperative programming among the congregations that support Jewish education for our youth.

**Sam and Jane Kravitz Social Services Fund.** To support Jewish social services in Grand Rapids.

**Donna G. Boorstein Memorial Fund.** To help ensure funding for Jewish arts, culture and history in Greater Grand Rapids.

**Lois and Sheldon Kahn Health Help Fund.** To support health services for Jewish community members not covered by other financial resources.

## *Thank you for supporting the Grand Rapids Jewish Community*

### **The Women of Valor Endowment Fund**

To Anne Wepman for a Happy 100<sup>th</sup> Birthday  
From Josh, Laura, Sarah, Joel and Lucas

To Anne Wepman in honor of her birthday  
From Susette Tauber

To Anne Wepman in honor of her birthday  
From Sylvia Belfer

To Anne Wepman in honor of her birthday  
From Susan and Sheldon Kopperl

In memory of Sonia Ashendorf  
From Mitzi Cohon

### **The Lois and Sheldon Kahn Health Help Fund**

In memory of Lois and Sheldon Kahn  
From Charlotte Wollheim

In memory of Lois and Sheldon Kahn  
From Jeffrey Sprung

In memory of Lois and Sheldon Kahn  
From Susan and Kenneth Kahn



### **JFGR Endowment Fund Donation Form**

Donation from: Name \_\_\_\_\_ Fund (pick from list) \_\_\_\_\_  
 Donor Address \_\_\_\_\_ In honor of \_\_\_\_\_  
 Donor City/St/Zip \_\_\_\_\_ In memory of \_\_\_\_\_  
 Send card to: Name \_\_\_\_\_ Notes: \_\_\_\_\_  
 Send card to address \_\_\_\_\_ **Send your donation and this form to:**  
 Send card to City/St/Zip \_\_\_\_\_ **2727 Michigan NE, Grand Rapids, MI 49506**

## The Shofar

Jewish Federation of Grand Rapids  
2727 Michigan NE  
Grand Rapids, MI 49506-1240

Send article text to: [Ann@jfgr.org](mailto:Ann@jfgr.org)

Phone: 616.942.5553

Fax: 616.942.5780

[www.jewishgrandrapids.org](http://www.jewishgrandrapids.org)

Email: [info@jfgr.org](mailto:info@jfgr.org)

**Next Issue's Information Deadline:**

**February 14, 2014**



Jewish Federation<sup>®</sup>  
OF GRAND RAPIDS

THE **STRENGTH** OF A PEOPLE.  
THE **POWER** OF COMMUNITY.

Purim Katan?  
Do you know what it is?



Hint: hidden somewhere in this edition of the Shofar is the answer.