



Champaign-Urbana
Jewish Endowment Foundation

ANNUAL REPORT **2023-2024** —

503 E John St
Champaign, IL

217.367.9872

www.cujef.org

Letter From the CU Jewish Endowment Foundation

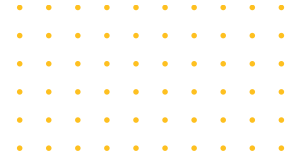


Chair Alexander Scheeline

Dear friends,

A subsidiary of the CU Jewish Federation, the CU Jewish Endowment Foundation is dedicated to preserving and enhancing the quality of Jewish life in our community by establishing and maintaining a secure financial base for the wide range of programs and services supported by its individual funds. To secure long-term support for Jewish organizations and individuals in the Champaign-Urbana area, CUJEF was established to receive, hold, invest, and manage endowments and quasi-endowments. It acts semi-independently of CUJF to manage and administer its assets and to provide the community with a means for long-term support of Jewish programs and institutions, either through donations to an existing endowment or creation of new ones, tailored to the donor's focus. CUJEF manages endowments for CUJF, Sinai Temple and Illini Hillel. Certain endowments also support targeted opportunities at Illini Chabad.

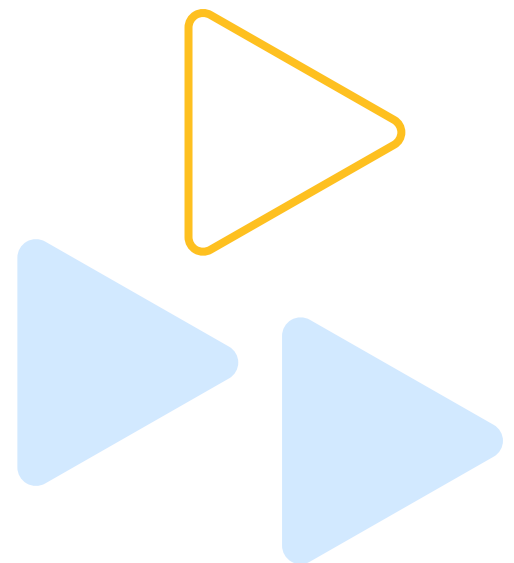
The majority of CUJEF investments are in a diversified pool of low-expense stock and bond index funds. Earnings are allocated to each endowment in proportion to its share of total funds managed. All funds are audited annually by an independent certified accounting firm as part of CUJF's audit. CUJEF disburses funds following review of proposals submitted to its Board.



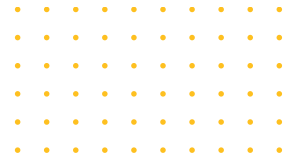
Board minutes are publicly available upon contacting the CUJF office. Anyone interested in establishing a new endowment should contact either Ma'ayan Weinberg or Alex Scheeline. While donor interests are paramount in choosing the focus of an endowment, the Foundation maintains a list of unmet needs that could benefit from additional long-term investment.

In addition to acting on requests to support programs at Sinai, Chabad, and Hillel, we supported such on-going activities as the CHAI Seniors program supported by the Goldberg-Gordon-Yairi and Miller funds, we welcomed the following new endowments: Donald M. and Joli L. Ginsberg Lecture Fund, CUJF Infrastructure Fund, Mitchell and Frances Harris Golden Peacock Fund for Yiddish and Other Jewish Heritage Culture Programs, Mitchell A. Harris and Frances F. Harris PACE Fund, Andrea Hoffman Honorary Fund for Illini Hillel, and Abram L. Sachar Memorial Fund for Hillel. In addition, we anticipate two more funds to be active by the end of the fiscal year: Lilly and David Gingold Holocaust and Tolerance Education Outreach Fund and Howard (Howie) Jacobson Fund for Illini Hillel. The Development subcommittee of CUJEF met with 21 community members to encourage development of additional legacy gifts.

We thank those Board members ending their service on June 30, 2024 including Datia Rosenberg Bross, Jennie France, Margie Harris, Tania Ionin, Ira Levenson, Holly Rosenkranz, and Kathryn Weisbaum, for their insight and integrity. We also thank Marcey Goldstein for her work on bookkeeping and helping us segue to our new fund accountants, PGCalc.



CUJEF 2023-2024



At the end of FY2023-24, funds entrusted to CUJEF totaled \$5,028,590.
The operating and investment costs for the year were \$44,968.

Table 1

2023-2024 Disbursements and Grant Expenditures		
Annual Campaign Disbursements		
CUJF Annual Campaign	PACE funds, PAGE fund, and disbursement from Robinson Quasi-Endowment	\$64,457.62
Sinai Temple	Ginsburg, Libman, Sudman, Cohen, Hamburg, Korry, Linowes, Avner, General, Klein, Robinson	\$33,864.27
Illini Hillel	Centennial, Kiddush, Eruv, Robinson, Weiner	\$5,445.70
Total		\$103,767.59

Grant Expenditures to Support Specific Programs in 2023-2024		
Camp Scholarships for five campers	Shapiro Fund, Sinai Sisterhood Fund	\$500
Michael Winograd Performance	Small Fund	\$3,000
Install accessible door openers in Illini Hillel bathrooms	Hillel Robinson Building Fund	\$9,056
Pamela Rae Schuller Disability Workshops	Zimmerman Fund	\$4,635
Review CU Torahs for repairs	Hymowitz Fund	\$2,700
Community Chanukah Celebration	Small Fund	\$1,500
Jewish Learning Institute Classes with Illini Chabad	Small Fund	\$3,000
CHAI Seniors Programming	Goldberg-Gordon-Yairi and Miller Funds	\$6,000
Purim Drag Show	Allen Fund	\$2,695
Russian Students Judaism Initiative	Allen Fund	\$1,350
Terry Schwartzberg; Community Yom Hashoah observance	Marco Fund	\$1,700
Zach Mayer concert (September, 2024)	Small Fund	\$3,000
Yiddish Songs of Social Change (Fall, 2024)	Small Fund	\$2,500
TOTAL		\$41,636

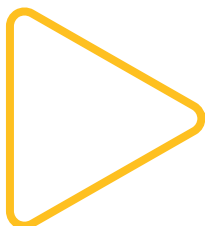


Table 2

Market Value of CUJEF Funds as of June 30, 2024	
General Endowment	\$272,214
Designated Endowment	\$4,202,872
Robinson Quasi Endowment	\$398,890
Klein Quasi Endowment	\$17,535.85
Operating Account	\$15,396
Designated Checking Account	\$121,682
Total	\$5,028,590

Table 3

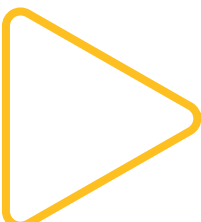
Operating Expenses for CUJEF 2023-24	
Professional Services	\$7,237.01
Operating Costs	\$24,267.49
Bank Fees	\$13,463
Total	\$44,968

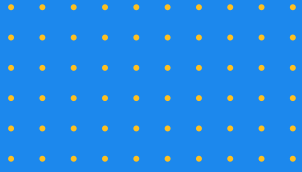
Table 4

Donated Capital		
Fund Name	Donations in 2023-24	Cumulative Donations
Supporting Community Cultural Program		
Dr. Samuel and Sadie Small Fund for Jewish Arts and Culture	\$490.70	\$88,634.70
Supporting CUJF		
CUJF PACE Fund	\$300.00	\$257,371.49
Allen and Elaine Avner PACE Fund	\$0.00	\$53,010.00
Dan and Frances Bloomfield PACE Fund	\$0.00	\$30,921.00
Lebenson PACE Fund	\$5,000.00	\$15,000.00
Helen and Ezra Levin PACE Fund	\$0.00	\$15,000.00
Lefkovitz-LeRoy PACE Fund	\$0.00	\$9,798.00
Eli Benjamin Mandel PACE Fund	\$0.00	\$10,864.00
Lee Melhado PACE Fund	\$2,000.00	\$23,010.00
Jack Simon PACE Fund	\$0.00	\$61,000.00
Leo and Anne Weisel PACE Fund	\$0.00	\$18,108.12
Lynn and Ira Wachtel PACE Fund	\$1,000.00	\$14,545.00
Linda Bauer PACE Fund	\$9,610.73	\$13,952.83
Supporting CUJF Human Service Committee		
Guttenberg PAGE Fund	\$0.00	\$50,000.00
Supporting Educational Enrichment for Youth		
Josh Gottheil Youth to Israel Fund	\$100.00	\$71,270.80
Sinai Sisterhood Camp Scholarship Fund	\$0.00	\$17,378.80
Ehud and Janie Yairi Fund for Tel Aviv University	\$0.00	\$82,104.00
Michael and Elizabeth Shapiro Camp Scholarship Fund	\$166.25	\$10,706.25
Supporting Program for Seniors		
Goldberg-Gordon-Yairi Fund for Seniors	\$0.00	\$26,749.00
Libby and Harry Miller Memorial Fund	\$0.00	\$11,204.00

Table 4 Continued

Donated Capital Continued		
Fund Name	Donations in 2022-23	Cumulative Donations
Supporting the University of Illinois Hillel Foundation		
Susan Linowes Allen Memorial Fund	\$0.00	\$124,978.00
Hillel Director's Fund	\$57.59	\$28,893.09
Hillel Centennial Fund	\$24,525.00	\$105,520.46
Hillel Kiddush Fund	\$280.00	\$11,580.00
Hillel Robinson Building Fund	\$0.00	\$89,491.95
Hillel Robinson Programming Fund	\$0.00	\$75,553.42
Dorothy Denzig-Krakower & David Krakower Memorial Torah Endowment Fund	\$0.00	\$10,186.00
Weiner Endowment Fund for Hillel	\$0.00	\$30,772.57
Hillel Eruv Fund	\$9,458.36	\$19,566.27
Supporting Holocaust Education and Memorials		
Jack and Sayde Marco Holocaust Fund	\$1,813.18	\$66,398.59
Harry Nelson Memorial Award Endowment	\$0.00	\$7,867.53
Supporting Sinai Temple		
Cohen Garden Fund	\$0.00	\$4,648.95
Joli and Donald Ginsberg Library Fund	\$36.00	\$13,541.00
Glaser Concert Fund	\$100.00	\$27,526.00
Hamburg Childhood Education Fund	\$0.00	\$16,583.50
Korry Confirmation Fund	\$0.00	\$19,935.42
Lewis Family Fund	\$0.00	\$20,083.00
Clarence and Adele Libman Religious School Fund	\$144.00	\$50,234.00
Linowes Bequest	\$0.00	\$50,000.00
Loeb Education Fund	\$0.00	\$23,679.00
Sudman Rabbinic Endowment	\$0.00	\$158,722.45
Alfred and Natalie Smith Building Endowment	\$20,000.00	\$73,632.05
Sinai Avner Fund	\$0.00	\$200,000.00
Sinai Board Discretionary Fund	\$0.00	\$24,764.00
Sinai General Endowment Fund	\$0.00	\$200,521.82
Marvin Steinberg Scholar-in-Residence Fund	\$225.00	\$33,863.50
Blanche and Seymour Sudman Rabbi's Discretionary Fund	\$0.00	\$158,722.45
Stanley and Joan Levy Youth Leadership Fund	\$400.00	\$22,401.00
Zimmerman Lecture Fund	\$0.00	\$11,314.00
Supporting Sinai Temple, Illini Hillel, Illini Chabad		
Hymowitz Fund (repair, purchase, cleaning of religious objects)	\$100,000.00	\$100,150.00
Unrestricted		
General Fund	\$500.00	\$68,235
Total		\$2,729,993.01





Champaign-Urbana
Jewish Endowment Foundation



Contact Us :



Phone Number
217-367-9872



Email Address
cujefecujf.org



Office Address
503 E John St, Champaign, IL 61820

