



Jewish Federation[®]
OF WESTERN CONNECTICUT

*Candle
Lighting*
5:05 PM



Shabbat
Shalom

VISIT OUR WEBSITE

DONATE TODAY!

UPCOMING EVENTS

**ART SHOW PROGRAM FEATURING ARTIST
JILL KRUTICK, FEB 18 - 6:00pm**



Join us on Thursday evening, February 18, 2021, at 6:00 pm Virtual Art Show. To make a reservation please register by email to cconti@jfed.net or call 860-483-6396

Join us for an evening of brilliant art by artist Jill Krutick, a famous painter from Westchester, New York. The program will start at 6 with a quick introduction of our new Executive Director, Gary Jones. We will continue with the experience of meeting Jill and learning all about her life-changing career. A decision to leave Wall Street and become the person she knew that will fulfill her life as, “an Artist”.

RSVP HERE!

SPEAKER SERIES

SUNDAY, FEBRUARY 21 – 10:00 AM

Myra Clark-Siegel – “*State of Antisemitism in America*”

Myra Clark-Siegel, Acting Director, AJC Westchester, will discuss the AJC’s first-ever State of



Antisemitism in America report, released on October 26, 2020, which shows deep anxiety among American Jews and a disturbing lack of awareness among the general public about the severity of antisemitism in the United States. Parallel surveys of American Jews and the U.S. general public reveal widely divergent views regarding Jew-hatred in America.

Pre-registration is required. Please email jewishlifect@gmail.com. The Zoom link will be sent on Saturday, February 20 to all attendees.

VIRTUAL WOMEN'S SEDER

"MOVING FORWARD IN HARMONY"

THURSDAY, MARCH 18 ~ 7:00pm to 8:30pm



VIRTUAL
Women's Seder
2021

*Moving Forward
in Harmony*

**Pauline M. Zimmerman, Federation President,
and Lisa Miller, Past Federation President,
Invite Women from the Federation Community
to Celebrate the Holiday of Freedom**

Moving Forward in Harmony

Thursday, March 18 ☞ 7:00PM to 8:30PM

The Seder will be led by Rabbi Nebel of Congregation B'nai Israel in Danbury
and accompanied by Linda Goodman of B'nai Israel in Southbury

This event is sponsored by the Jewish Federation of Western Connecticut

Registration will start on March 4, 2021

Mark your calendar and stay tune for more details to follow

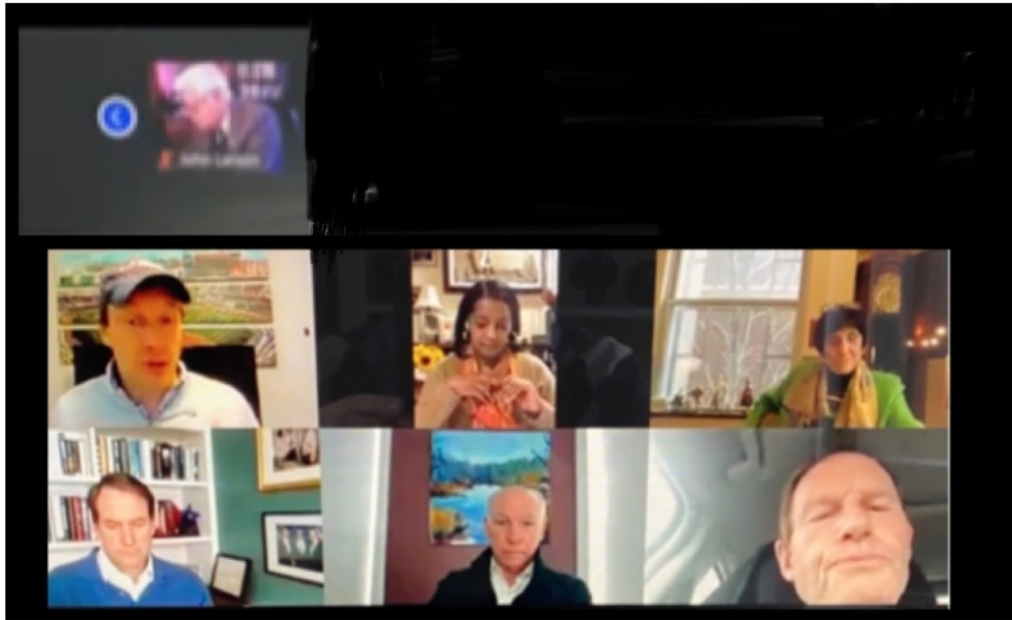
Rabbi Rhonda Nebel of Congregation B'nai Israel in Danbury started in July after serving sixteen years at Temple Beth Chai in Hauppauge, N.Y. Rabbi served as the education and youth director at Congregation Beth El in New London for ten years. Rabbi is passionate, enthusiastic and committed to strengthening Jewish knowledge, understanding, beliefs and practices within diverse communities.

Linda Goodman of B'nai Israel in Southbury has been singing all her life in choirs and in the car with her family. As a former special education teacher Linda used music as a joyful way to teach children. A Jew by choice, she was drawn in by the cantors and song leaders at B'nai Israel. For the past 10 years Linda has served as Director of Sacred Music.





Jewish Federation Association of Connecticut (JFACT)



On Sunday, January 31, 2021 JFACT Executive Director, Michael Bloom, moderated a discussion on hate/hate groups with the entire Connecticut Congressional delegation. Our entire delegation was clear that they will not stand for this rise in hate and will do everything they can to combat it. Topics covered included;

- Future Congressional hearings on hate groups and the rise in anti-Semitism
- Additional security dollars to help protect our Jewish institutions
- Additional dollars to help incentivize states to teach about the Holocaust and other Genocides.
- No Hate Act which provides tools to local police to fight hate crimes

The discussion was very thorough and JFACT is incredible appreciative of the opportunity to speak to our entire delegation in one virtual meeting.

The full video on our YouTube Channel:

<https://www.youtube.com/channel/UCcG8ltKQlanL213S-fw6pQw/videos>

COMMUNITY NEWS

Recently Chaim Gewirtzman, CEO of NCE Homecare and a member of the Jewish Federation of Western CT Board of Trustees shared this amazing story on social media.



"As many of my friends and colleagues know, I am proud to volunteer for **Hatzolah Emergency Air Response Team**, a non for profit Air Medical Transport service that treats and transports sick and injured patients across the country and internationally. This past Friday, shortly before

Shabbos, I received a call from the flight coordinator asking if I was available for urgent transport to medevac a young boy critically injured in a horrific skiing accident in New Hampshire. Of course, the answer was yes. With the blessing of my wife who quickly and carefully packed a bag of some of her delicious food, **Yitz Rabinowitz**, a close friend, and Nationally Certified Paramedic, and I were in the car and on the way to the airport.

Within just a short time of being notified, Hatzolah Air's Team was airborne and en route to meet our patient and transport him to a Regional Medical Center where he would be able to receive exceptional care.

It was a true honor to treat and care for this critical boy during the complex transfer for emergency surgery at **Children's Hospital of Philadelphia**."

DONATE TO THE FEDERATION TODAY!



Jewish Federation[®]
OF WESTERN CONNECTICUT

**DONATE TODAY -
IN CHALLENGING TIMES
WE ARE GRANDER TOGETHER**

With the uncertainty in our world it is imperative now more than ever that we join together as a Foundation of strength for each other. Please consider a donation today. Our Federation may be closed nonetheless we are still working. Working to support our community.



DONATE TODAY!

**CURRENT COVID-19 PROTOCOL FOR
VISITORS OF THE WALZER FAMILY JEWISH
COMMUNITY CAMPUS**



While our staff has begun working within the building for a few hours per week, our campus is still not open to the public for larger gatherings. If you are a member or volunteer that needs access to our campus, please call and arrange this with our facility manager, Maria Cruz 203.267.3393.

We can, on a case by case basis, accommodate a group of less than five for short term projects to use spaces in our building that are conducive to social distancing.

As a reminder, persons who enter our building may be asymptomatic for Covid-19. For your safety, and the safety of every other person, you must wear a mask properly at all times. You will be met at the door by our facility manager, Maria Cruz, who will supervise the sign-in process for any signs of illness.

OUR EXECUTIVE DIRECTOR, GARY JONES

The Federation's vision is to seek to be the place, both in real and in virtual settings, for thriving Jewish life,



community, and values in the Western and Northwestern parts of the state.

Please feel free to contact Gary at gjones@jfed.net

**The Jewish Federation
of Western CT
444 Main Street North,
Southbury, CT 06488**



**DONATE
TODAY**

The Jewish Federation Of Western Connecticut | 444 Main Street North, Southbury, CT 06488

[Unsubscribe rhamilton@jfed.net](mailto:rhamilton@jfed.net)

[Update Profile](#) | [About Constant Contact](#)

Sent by bycconti@jfed.net in collaboration
with



Try email marketing for free today!