

# SASSONE

Strengthening Jewish Disability Inclusion

Brought to you by



Jewish Federation of Kansas City

## 2025 IMPACT REPORT



**286**

STUDENTS WITH  
DISABILITIES  
SERVED



**737**

INTERACTIONS WITH TEENS,  
FAMILIES, SELF ADVOCATES  
& EDUCATORS



**2,049**

STUDENTS  
IMPACTED



**\$180,000**

BLOCK GRANTS ALLOCATED FOR  
ESSENTIAL INCLUSION NEEDS

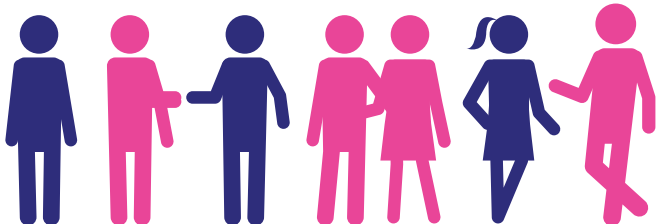


**\$234,106**

RAISED IN 2025  
FROM GRANTS &  
DONATIONS

**500+**

COMMUNITY MEMBERS REACHED  
THROUGH 6 COMMUNITY & FAMILY  
ENGAGEMENT EVENTS SUPPORTED



**\$10,000**

IN MICROGRANTS ALLOCATED TO  
12 DIFFERENT INCLUSION PROJECTS



**13**

COMMUNAL WORKSHOPS  
& NEW PROGRAMS

