



Federation News

September 2011



ELUL/TISHREI, 5771/5772
SEPTEMBER, 2011
WWW.JEWISHGRANDRAPIDS.ORG

JEWISH FEDERATION OF GRAND RAPIDS

The Shofar

Chairman's Letter

Dear Friends,

As I begin my term as Chair, I feel honored and privileged for this opportunity to work with the members of our community, our JFGR Board, and our professional staff; to learn more about our community and the Jewish world; and to do the meaningful and fulfilling work of Jewish communal service. I appreciate Dan's capable and empathic leadership and the contributions of prior Boards. I appreciate our dedicated professionals and Mike's strong leadership as interim Executive Director. And I appreciate the solid legacy and financial foundation that those on whose shoulders we all stand have left for us. We are a strong community with great assets on which to draw.



We also face significant challenges, many of which are common to Jewish communities everywhere and a few of which are more specific to Grand Rapids. We can deal with these challenges.

The way to begin is to remember what we share—our sense of community and desire to build its strength and continuity for future generations—and engage in conversation about how we can work together to address our challenges and utilize our assets to realize our common aspirations. The strategic planning process we are just beginning is an important part of this conversation.

While I would not want to predetermine the specific priorities and initiatives that I expect us to define through our planning process, I can share some general directions in which, going in, I would like to help us move. First, I would like to see us enhance our strategic and organizational structure to enable us to work together and utilize resources most effectively. Second, I would like to see us make it easy for more members of our community to connect and contribute, in ways that they find personally meaningful and manageable, to some aspect of our mission. Third, and perhaps most important to me, I would like to see the members of the Jewish institutions in Grand Rapids think and talk and act like one community—to recognize that what we have in common is much greater than our differences. The "One Community" tagline that our JFGR office has been using in their communications is a succinct and perfect articulation of this direction.

Continued on page 2

Our Mission

Jewish Federation of Grand Rapids supports cultural, social and financial needs of Jews locally, in the State of Israel, and around the world.

This mission is accomplished by providing services to the community and through fundraising and allocation efforts.

One Community

Federation is now on Facebook!

Become a fan of Jewish Federation of Grand Rapids

Inside this issue:

Federation News	1-3
Senior Programming	4-5
Community News	5-8
United Jewish School	9
Congregation News	9-10
Endowments	11

Federation News

Jewish Federation of Grand Rapids
 2727 Michigan NE
 Grand Rapids, MI 49506
 616.942.5553
 616.942.5780 fax
 www.jfgr.org

Officers

Chair
 Greg Kaufman
Vice Chairs
 David Alfonso
 Judith Joseph
 Karen Padnos
 Andrew Samrick
Treasurer
 Claude Titcher III
Past Chair
 Dan Hurwitz
Interim Executive Director
 Michael L. Presant

Board of Directors

Glenn Barkan
 Davida Dennen
 Mabelle Hammond
 Norm Kravitz
 Marisa Krishef
 Audrey Sundstrom
 Lanny Thodey
 Chad Zagel

Ex-Officio Members

Congregation Ahavas Israel
 Rabbi David Krishef
 Marni Vyn, President

Temple Emanuel
 Rabbi Michael Schadick
 David Fishman, President

Chabad House
 Of Western Michigan
 Rabbi Yosef Weingarten

SAVE THE DATE

Tuesday, November 1, 2011

To attend an evening event featuring speaker

Linda Hurwitz

President of the

National Women's Philanthropy Board of the

Jewish Federations of North America

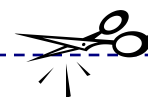


Continued from page 1

To paraphrase Rabbi Tarfon in the Pirkei Avot (Ethics of the Fathers): It is not our responsibility to finish the work (of perfecting the world), but we are not free to desist from it either. Each generation, each Board of each Jewish organization, each of us is given the opportunity and responsibility to work together—as part of our larger, single community in Grand Rapids and worldwide, and as a link in a chain of community extending for generations—to do our part of the work. I look forward to working with you. And I welcome any suggestions, criticisms, concerns, or ideas you have; I would be happy to hear from you at (almost) any time.

B'shalom,

Greg
 616.247.7110 (o)
 616.405.9677 (c)
gkaufman@amstore.com
gregakaufman@skype.com



ANNUAL



CAMPAIGN

Jewish Federation of Grand Rapids
 2727 Michigan NE
 Grand Rapids, MI 49506
 (616) 942-5553

www.jfgr.org

Live Generously.

Name _____

Address _____

Please cut out this pledge card, fill it in and send it to the Federation office.

I HEREBY PLEDGE TO THE FEDERATION ANNUAL CAMPAIGN THE SUM OF: \$ _____

DONOR'S SIGNATURE

Method of Payment: Check Stock

Please Charge my: Mastercard Visa

Discover

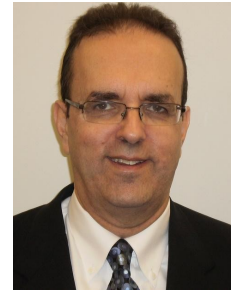
Card Number

Federation News

Interim Executive Director's Letter

Dear Friends,

As you may be aware, I am not originally from West Michigan. My wife Carol is, so when we moved here, now more than 25 years ago, I asked my mother-in-law, Lois Kahn, to tell me about the local Jewish community. I recall the response went something like this: 'Oh, it's changed a lot. When I was growing up (in the 1930s), the members of Ahavas Israel and Temple Emanuel didn't speak with each other. When Carol was growing up (in the 1960s-70s), people spoke with each other, but would not do things together. Today, we can talk and do things together.'



Yes, we've come a long way. It's been a privilege for me to have witnessed the continuing evolution of our community over the past quarter century. From the congregations and the United Jewish School to our wide-ranging cultural and social service programs, our Jewish community, admittedly not the largest in the country, has come together to offer a vibrant Jewish life for community members old and new.

Of note, we are a community with diverse interests, including but not limited to our religious practices and political views. This diversity is a strength of our community. We can disagree without becoming disagreeable. Just like a family, we have worked hard to keep our community together, indeed, as *one community*. And we should not take this maturity for granted.

I heard a song on the radio recently by a couple of nice Jewish boys named Paul Simon and Art Garfunkel. You know the lyrics: "...and the leaves that are green turn to brown." And as autumn comes every year, so arrives our campaign fundraising season.

Let's be honest. Fundraising is not the most comfortable activity for most of us. It's hard for our solicitors to ask for your contributions, and it is oft-times difficult to make the decision about what amount to pledge. That is, I believe, until we remember why we raise money for Federation. Quite simply, it's our opportunity each year to say loud and clear that we value our community, that we don't take it for granted. And we realize that without adequate funds, the quality of Jewish life in our community, and our ability to support our extended Jewish kin in Israel and around the world, will diminish.

Looking at numbers in an article like this can be, well, boring, so I'll try to keep them to a minimum. During the past four campaign seasons, 2007-10, our general campaign has fallen from \$605,000 to \$539,000 to \$471,000 to \$441,000, which translates into drops of 11%, 13% and 6% in 2008, 2009 and 2010, respectively, in comparison to the prior year's campaign. What do these numbers tell us? To be frank, we've been bleeding, though (perhaps) the bleeding has slowed. Most importantly, if we wish to maintain and continue to improve on what our Jewish community has to offer, we must turn these numbers around.

It is noteworthy that, while our dollar amounts have fallen, the annual number of our campaign donors during 2007-10 have remained more or less around 500, i.e. while we have lost some larger donors who have either moved or passed away, we have continued to add new campaign contributors. Therefore, I know we have the capacity to turn our campaign around. The only question is: will we?

My personal goal is to see our campaign return to at least the \$500,000 level. How can we do this? Let's do the math. If we have 500 donors, to achieve this goal requires an average giving amount of \$1,000. We are fortunate that some members of our community donate much more than that amount, so most of us can donate less than \$1,000 to achieve this goal. But not much less. Unlike many nonprofit organizations with thousands, if not millions of contributors, we have a smaller giving base, which requires a larger donation amount per individual to support our community.

Therefore, when one of our solicitors reaches out to you to discuss your 2011 campaign pledge, please keep in mind our community, how far we've come, and what turning around our campaign can mean to the future of the Grand Rapids Jewish community. And, while of course we will not ask you to pledge more than you can afford, we hope you'll consider all that you can do for our Jewish community.

L'Shana Tovah. Best wishes for a Happy and Healthy New Year.

With warmest regards,

Mike Presant
mike@ifgr.org

Senior News

Apples and Honey Luncheon

Thursday

September 22, 2011

12:00 noon - 2:00 pm

\$8.00 per person

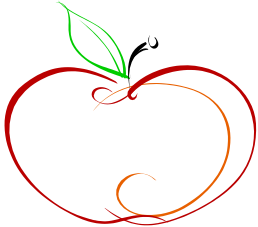
Ahavas Israel Social Hall

Entertainment by

Larry Broomberg

Transportation available.

RSVP to Ann by September 16, 616-942-5553



Lunch Bunch



Monday

October 17, 2011

11:30 am

The Blue Water Grill

5180 Northland Dr NE

Grand Rapids MI 49525

Cost \$8.00

Transportation available

Call Ann, 616-942-5553

Seniors "Come Fly Away!" for the evening with me!

Sunday, October 9, 2011

6:30 pm at Devos Hall

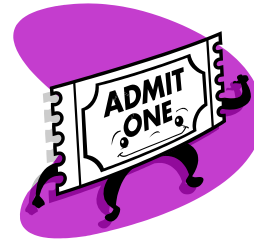
Only 15 Tickets available !! Cost: \$25

All seats are wheelchair accessible

Car pooling from Temple Emanuel at 5:45 pm,

performance is at 6:30 pm

Please RSVP to Ann by calling 616-942-5553 ext 206 - ASAP



Broadway Grand Rapids presents *Come Fly Away*, a new musical that brings together the legendary music of FRANK SINATRA and the creative vision of TWYLA THARP. This one-of-a-kind experience combines the seductive vocals of "Ol' Blue Eyes" with the sizzling sound of a live 14-piece big band and the visceral thrill of Tharp's choreography.



Don't Miss This Event!!! Senior Living Seminar Friday September 16, 2011, 1:00 pm, at Ahavas Israel

Do you know the difference between Independent living, assisted living and nursing home living? Have you wondered what costs are involved? What is the best option for you or your aging parent? Wayne Dantuma will speak at Ahavas Israel. Wayne, President of ABC Senior Services in Grand Rapids, specializes in Kent County's senior housing and elder care options. He represents seniors in a facility driven industry. He is able to provide this service free of charge. His expertise in the area's options include assisted living communities, residential care homes, nursing homes, Alzheimer's care, respite care, hospice care and in-home care. An RSVP is appreciated but not necessary!

As always transportation is available by calling the Federation office 616-942-5553

Senior and Community News

Senior Mah Jongg

Anyone interested in learning or playing Mah Jongg, please contact **Aleta Katonak**, by email, alekatsr4u@juno.com (preferable) or by phone



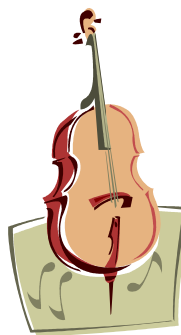
616-281-5917. These are daytime lessons, and games are at no cost. Then, of course, if there is anyone looking for a game, join the fun! MahJ on..

Transportation available.

Future Lunch Bunch Date:

Thursday, November 10

Thursday, December 15



**Seniors,
do you want to attend the
Cultural Council
Symphony Concert on
November 19, 2011, but
need a ride?**

**Call Ann at 616-942-5553
for transportation**

Cultural Council

Save the date!



Sacred Dimensions Series

David Lockington, conductor

**GRAND RAPIDS SYMPHONY CONCERT
NOVEMBER 19, 2011
8:00 PM
TEMPLE EMANUEL**

JFGR Emergency Loan Program

Jews in our community may be eligible to receive an emergency loan if the circumstances for a request are appropriate. Often loans are requested to pay utility bills, rent, or an unexpected expense.

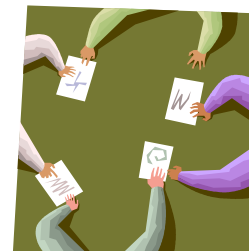
To apply, a confidential interview is conducted and this information is presented to a committee which determines eligibility. This loan is interest free, and the repayment schedule is very flexible.

Please contact Ann for a confidential consultation:
616-942-5553, ext. 206

Business Forum

The Jewish Community Business Forum is a good networking opportunity to discuss business principles and to stay aware of resources available within our community.

**Next meeting:
Thursday
September 8, 2011
12:00 pm - 1:00 pm
El Barrio
545 Michigan NE
Grand Rapids, MI 49503
Everyone Welcome**



Community News

The Cultural Council of the Jewish Federation of Grand Rapids 2011-2012 Spectrum series

Saturday, November 19, 2011

GRAND RAPIDS SYMPHONY

Special concert at Temple Emanuel

Sunday, January 22, 2012

“THE ART OF BEING JEWISH #4”

Showcasing local Jewish talents

Sunday, February 12, 2012

REUVEN Y. HAZAN

Where Had Israel Been and Where is it Going?

Monday, March 19, 2012

PAULA SHOYER

Cooking demonstration and Dessert Tasting

Monday, May 14, 2012

JAMEY TURNER

Glass Harp Concert

Keep these dates, more information to follow.

This series is sponsored by The Rosenzweig-Coopersmith Foundation



***Cultural Council of the Jewish Federation of Grand Rapids* Spectrum Series 2011—2012 Membership Form**

Please send me season tickets for Spectrum 2011-2012:

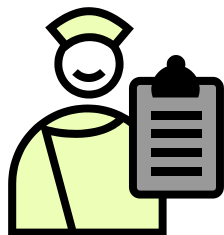
- I/We would like to be an Underwriter: \$500+ (up to 5 tickets per event)
- I/We would like to be a Patron: \$250 - \$499 (4 tickets per event)
- I/We would like to be a Sponsor: \$125 - \$249 (3 tickets per event)
- I/We would like a Family membership: \$100 (2 tickers per event)
- I would like a Single membership: \$50 (1 ticket per event)
- I would like to be a Cultural Council Volunteer, please contact me.

First Name _____
 Last Name _____
 Address _____
 City/State/Zip _____
 Phone (____) _____

Enclosed is my Check for \$ _____
Payable to **The Jewish Cultural Council**

**Please mail this form with your check to: The Jewish Federation of Grand Rapids,
2727 Michigan NE, Grand Rapids, MI 49506**

Community News



Save the Date!
 We will be having a
 blood drive and
 bone marrow
 donor registration on
Sunday, December 4, 2011
 at Temple Emanuel

Watch for more details in upcoming
 editions of *The Shofar*.

FLU SHOTS!

Make a date to get your flu shot.

Temple Emanuel
Sunday November 6, 2011.



PLEASE sign up with Ann by call-
 ing 616-942-5553 ext 206. We need at least 25
 participants to pre-register! The clinic will be
 open from 10:00 am until 1:00 pm. The cost is
 \$30 per flu shot, and they also accept the
 following health insurance:
 Priority Health, Blue Care Network, Cofinity,
 ASR or Medicare benefits.

Hadassah Book Club

Wednesday, October 12, 7:15 pm
 at Diane Broomberg's home:
 2865 Lake Drive SE
 RSVP to [616-949-6084](tel:616-949-6084)

Book to read:

***The Invisible Bridge* by Julie Orringer**
 Facilitator: Marilynn Lystad

Book will be available for purchase at
 Shulers Books at 28th Street

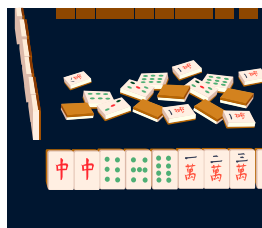
Book ends by choice...

Flory Silverstein, 616-949-5766
 Sue Remes, 616-949-3505



YAD Mah Jongg

Join us at our
next game!

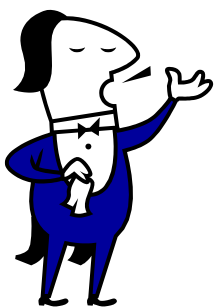


For information about the ongoing Mah Jongg
 games, please contact Michele Young at 616-
 828-4806 or youngml1967@gmail.com.

Beginners welcome!

No experience necessary.

A New Season for Shir Shalom Chorus



Shir Shalom Chorus is gearing up for an exciting 2011-12 season. We invite all singers to join us in song. If you can carry a tune, we want (need) you! We will have opportunities for solo and ensemble work.

Not only do we sing for Jewish audiences, but we also have quite a following in the general Grand Rapids community as we represent our Jewish community through music. It's very rewarding to see the smiles on our audiences' faces as they enjoy our presentations. Do consider joining us and sharing your love of music.

Our first meeting is scheduled for Tuesday, September 13, and will be held at Temple Emanuel, 7:00 pm. Do come, mingle, and sing. Munchies will be available. Questions? Call Barbara Robinson (616-949-4986) or Toby Dolinka (616-949-6528).

Community News

Community Book & Art Fair



Sunday, November 13, 2011
10:00 am – 2:00 pm
Temple Emanuel



Do you make art? (knitting, jewelry, paintings, wood crafts, specialty foods, etc.)

Would you like to sell it?

Please let us know by October 26 if you'd like to reserve a table.

For additional information, contact:

Sari Cohen at sari@jfgr.org or 616-942-5553

Kris Siegel at krisiegel@comcast.net or 616-446-9276

2011-12

our 19th season

Watch your mailbox for our
2011-12 Season Brochure.

My Name is

Asher Lev

November 9-20, 2011

adapted by Aaron Posner
based on the novel by
Chaim Potok

*Early Bird
Season Pass*

\$40 when purchased
by October 12, 2011

Save \$5!

YENTL

April 19-29, 2012

adapted by Leah Napolin &
Isaac Bashevis Singer

www.jtgr.org

JEWISH

Theatre
GRAND RAPIDS

Season info: www.jtgr.org or 616.234.3595

Checking Out

June 14-24, 2012

by Allen Swift



2011 GENERAL ASSEMBLY
DENVER, COLORADO

Save the Date!

JFNA's General Assembly is

November 6-8, 2011

In Denver, Colorado

Call the Federation office

For information or find
details at

www.generalassembly.org



The Jewish Federations®
OF NORTH AMERICA

United Jewish School and Congregation News



Beit Sefer B'yahad/United Jewish School
 1715 East Fulton, Grand Rapids, MI 49503
 Pam Rush, School Director
 616-459-5976
pam@templemanuelgr.org
www.unitedjewishschool.org

Opening Day:
Sunday, September 11, 2011
Temple Emanuel

Accepting ages 2 years through 12th grade.

Please check our website for information and to enroll: www.unitedjewishschool.org.

UJS Contributions in honor of:
 2011 Confirmation Class by
 Steve and Barb Duchemin

Please remember UJS in your contributions. We have a beautiful tribute card that can be sent in memory of someone, in honor of a special occasion or just for a simple "thank you".

Chabad House

Gan Yiladim Preschool

Gan Yiladim is a Jewish Preschool where children thrive in a creative and loving environment.

Gan Yiladim has been serving Grand Rapids and nearby communities since 1980.

Registration is now open for the fall of 2011-2012

For Jewish Children ages 2-5

For more info call Sarah @ 616-813-4827



Create your own Shofar at



The Shofar factory

Sunday, September 25

10:00 am – 2:00 pm

at the

Chabad House

2615 Michigan N.E.

Admission: \$5.00

Includes all materials, all the fun and a Shofar to keep

Call now to RSVP 616-957-0770

New program at Chabad coming soon ...

**Experience
 the Gift of
 Discovery**



2011-2012

Upcoming courses at the
 Rohr Jewish Learning Institute

www.myJLI.com

November 2011

Fascinating Facts:
 Exploring the Myths and
 Mysteries of Judaism

January 2012

Money Matters:
 Jewish Business Ethics

May 2012

The Art of Marriage

Congregation News

Congregation Ahavas Israel

Do you draw, paint, whittle, do fiber art (crochet, quilt, appliqué work, weave, etc.), beadwork, jewelry-making or any other arts and crafts? Come join the art group at Ahavas Israel! We meet every Wednesday from 4:30 pm – 6:00 pm. Come and be inspired by others as you work on your own projects. You will need to provide your own supplies – paints, brushes, paper, etc. This is an unstructured group, each person is free to work on whatever pleases him or her. For more information, please contact Leah Sauer (616) 805-3778 or leahsauer@gmail.com or Barb Christiaans (616) 531-1151.

Temple Emanuel

**Temple Emanuel Invites the Grand Rapids Jewish Community to join us for
Engaging Israel: Foundations for a New Relationship
on Saturday, September 24 at 7:00 pm**

We are delighted to begin the High Holy Day Season with the first in a year-long series of discussions about Israel and our relationship with the Jewish State. We have acquired the iEngage DVD lecture series from the Shalom Hartman Institute in Jerusalem. The goal of iEngage is to respond to the growing feelings of disenchantment and disinterest toward Israel among an ever increasing number of Jews by creating a new narrative regarding the significance of Israel for Jewish life. iEngage is a project led by renowned scholars in the fields of Jewish studies, Middle East politics, and history. iEngage addresses core questions pertaining to the necessity and significance of Israel; how Israel should exercise power; why a Jew who lives outside of Israel should care about Israel; and what the State of Israel can offer the world. The first lecture and discussion is entitled "From Crisis to Covenant". This will be followed by dessert and an opportunity to discuss what was presented. Selichot, the first service of the High Holy Day Season, will follow at 8:30 pm. Please consider joining us for what we hope will be a thought provoking and spiritual start to 5772.

**We are delighted to wish Mazel Tov to Aquinas College
in celebration of 125 years of service to our community.**

We are most fortunate to welcome author and Professor Gary Eberle to Temple on Friday, September 9 as our guest speaker as part of the Aquinas celebration. Professor Eberle will explore the spirit and history of a Michigan educational institution that has inspired young minds for generations, becoming an essential voice for intercultural discourse in the West Michigan community. Eberle will highlight, among other things, the rich relationship between Aquinas and Temple Emanuel, using archived photographs and clips to bring his presentation to life. There will be an opportunity for questions following his discussion. Shabbat Services will be held at 6:15 pm, a potluck dinner will follow at 7:00 pm. The cost is \$4 for adults and \$2 for children. Temple will provide chicken, challah, wine, juice, and dessert. We ask everyone to bring a non-dairy side dish to pass. Call the office to RSVP. Professor Eberle will speak at approximately 7:45 pm.

Temple Emanuel Goes to Israel with Ayelet Tours during Chanukah 2012

For more information, please call the Temple office at 616-459-5976 if you have an interest in traveling with Rabbi and Susan, or contact Rabbi Schadick at Rabschad@aol.com.

Jewish Federation Endowments

Life cycle times, both happy and sad, are traditional times to make donations to Jewish causes. You can make a donation of \$5 or more to the Jewish Federation of Grand Rapids in honor or in memory of members of our community. We then will acknowledge that donation with a card to that individual or family. This is a wonderful way to send your good wishes and be able to fulfill the mitzvah of tzedakah.

Please be sure to indicate what the occasion is and who is to receive the card. Please specify which of the following funds you would like your donation to be credited to:

The Woman of Valor Fund (\$10 minimum contribution).

To honor the women in our lives who have made a difference personally, locally or nationally.

The Federation General Endowment/L'Dor Vador Fund.

To help ensure the continued work of the Jewish Federation of Grand Rapids for now and the future.

The Julian and Judith Joseph Fund. To provide for local programming and events through the Jewish Federation of Grand Rapids.

The David and Susan Samrick Youth Scholarship Fund.

To provide scholarships to Jewish sleep away camps and experiences.

The Charles and Maxine Shapiro Fund. To help ensure long-term aid to Israel and Jews around the world.

The Louis and Louise Weiner Fund. To help ensure local programming for seniors in the Grand Rapids Jewish Community.

The Jerry and Judy Subar Fund. To help ensure funding for overseas Jewish communities' needs.

The Leven Family Fund. To establish and provide Jewish facilities, and support for cooperative programming among the congregations that support Jewish education for our youth.

The Sam and Jane Kravitz Social Services Fund. To support Jewish social services in Grand Rapids.

***Thank you for supporting the
Grand Rapids Jewish Community***

The Louis & Louise Weiner Fund

To Rabbi Yosef Weingarten in memory of Terry Weingarten

From Judith and Julian Joseph

The Women of Valor Endowment Fund

To Rabbi Yosef and Sarah Weingarten and Family in memory of your Mother and Grandmother, Terry Weingarten, Z"L

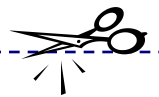
From Rabbi David and Marisa Krishef and Family

To Rabbi Yosef Weingarten in memory of Terry Weingarten

From Anne Wepman

To Linda Baruch and Family in memory of Beverly Weingarden

From Greg and Audrey Sundstrom and Family



JFGR Endowment Fund Donation Form

Donation from: Name _____

Donor Address _____

Donor City/St/Zip _____

Send card to: Name _____

Send card to address _____

Send card to City/St/Zip _____

Fund (pick from list) _____

In honor of _____

In memory of _____

Notes: _____

Send your donation and this form to:

2727 Michigan NE, Grand Rapids, MI 49506

The Shofar

Jewish Federation of Grand Rapids
2727 Michigan NE
Grand Rapids, MI 49506-1240

Send article text to: Ann@jfggr.org

Phone: 616.942.5553

Fax: 616.942.5780

www.jewishgrandrapids.org

Email: info@jfggr.org

Next Issue's Information Deadline: September 15, 2011

We're on
Facebook!



One Community

*The Jewish Federation of Grand Rapids' Board of Directors and Staff
wishes our Jewish Community a*

L'Shana Tovah

and a Happy and Healthy New Year!

